

Genesee/Finger Lakes REGIONAL REVIEW

NEWSLETTER OF THE GENESSEE/FINGER LAKES REGIONAL PLANNING COUNCIL

Volume 7, Number 2, Fall 2010

Genesee – Finger Lakes Regional Blueway Analysis

Project aims to inventory canoe and kayak routes throughout the region

By Brian Slack

G/FLRPC recently completed the *Genesee – Finger Lakes Regional Blueway Trails Analysis Plan*, a project sponsored by the New York State Office of Coastal, Local Government, and Community Sustainability (formerly the Division of Coastal Resources), a division of the NYS Department of State through the Town of Wheatland. The project was partially financed by funds provided under Title 11 of the Environmental Protection Fund.

The project was conceived as a means of propelling the Genesee-Finger Lakes Region forward with the establishment of a regional network of recreational canoe and kayak “water trails,” thereby advancing the larger goal of creating a statewide blueway system. The creation of a New York State Blueway Trail is already underway in various areas, including the Hudson River Water Trail, the Canal Recreationway, and the Lake Champlain Paddlers Trail. Through this project, riparian, canal and lake corridors in the Region were identified, described in detail and measured based on their suitability for blueway use and designation. In doing so, municipalities and local advocates are provided with a valuable tool to assist them with their own efforts in planning for and establishing local blueway trails.

What is a Blueway?

Blueways are small boat and paddling routes sometimes referred to as “water trails.” They typically combine recreation with environmental awareness and cultural interpretation, allowing users to travel along scenic waterways to designated stops along the way for rest, overnight stays, or enjoyment of land-based attractions in the vicinity.

The blueway concept serves as a framework for the planning and maintenance of recreational water trails. Blueways come in many forms and can also be in various

stages of planning and completion. Ultimately it will be essential for communities to develop their own vision for their local waterways. Residents and community leaders are ultimately in the best position to determine the most appropriate manner by which their waterways can be utilized.

The concept can help communities foster new relationships between neighboring municipalities, provide new destinations for water-based recreation, create and enhance distinctive leisure opportunities for the public, and make their communities better places to live.

What’s in the Report?

The project is intended to expedite the identification of potential future blueway corridors and to facilitate the planning of those corridors. This document has identified waterways in the Region that have the potential to serve as a blueway corridor in the future – described in *See Blueway Analysis: page 3*



Paddlers depart from Access Pt. No. 10. Source: <http://www.oakorchardcanoe.com/>

Upcoming Events

Spring Local Government Workshop, November 19th, 2010, Genesee River Restaurant and Reception Center, Mount Morris, New York. For more information see insert in this newsletter and visit <http://www.gflrpc.org/Fall2010.htm>

For further information call 585-454-0190, email gflrpc@gflrpc.org

2009 Land Use Monitoring Report

By Razy Kased

The annual Regional Land Use Monitoring Report is prepared by G/FLRPC for the Genesee Transportation Council (GTC) under the Unified Planning Work Program. The recently completed report provides information on the issuance of building permits in 2009 to identify areas of growth within the Genesee-Finger Lakes (G-FL) Region that might require transportation planning and service modifications.

The report analyzes the number of permits issued, total square footage, and total value for buildings for each municipality within the region as well as the Transportation Management Area (TMA). The TMA covers Monroe County and the municipalities adjacent to Monroe County in Livingston, Ontario, and Wayne Counties, as well as the Town and City of Canandaigua.

The analysis considers “residential”, “industrial”, “commercial”, “community service” and “not elsewhere classified” categories. A three-year trend analysis is provided for permitted residential, industrial, commercial, and community service units in all nine counties. A time series (or historical trend) analysis is provided for residential, industrial, and commercial development. Also provided is the number of subdivision approvals in the TMA.

The building permit data included in this report was col-

lected through surveys sent to the municipal or county officials responsible for the collection and dissemination of such data in the region.

The highest number of residential permits in the G-FL Region in 2009 was in the Towns of Henrietta (169), Penfield (99), Greece (97), Chili (74) and Victor (66). The Town of Henrietta issued 169 permits totaling the largest number of units (349). The highest number of residential permits issued by municipalities outside of Monroe County was in the Towns of Victor, Farmington and Canandaigua in Ontario County issuing 66, 64 and 49 permits respectively and in the Towns of Ontario and Macedon in Wayne County issuing 27 and 25 respectively. The Town of Farmington issued 64 residential building permits totaling the largest number of units (187) outside of Monroe County. The majority of industrial and commercial permits were issued in municipalities in the TMA.

From 1994 to 2009, the majority of permits for residential units in the TMA have been in Monroe County. In the TMA outside of Monroe County, the Towns of Victor, Canandaigua, and Farmington in Ontario County, and the Towns of Ontario and Walworth in Wayne County issued permits for the largest number of residential units over the same sixteen year time frame.

A Look at the Census 2010 Past, Present and Future

By Razy Kased

The first 2010 Census data to be released will be the official national and state population counts, which are used to apportion seats in the U.S. House of Representatives. As mandated by the U.S. Constitution, this data must be delivered to the President of the United States by the Census Bureau on or before December 31, 2010.

Some of the 2010 operations were conducted by the Census Bureau in phases with varying schedules and timelines. In March of this year the most critical phase, the Mailout/Mailback and Update/Leave phase occurred, where the questionnaires were distributed. Many households were urged to mail back their questionnaires on April 1st (Census Day) with subsequent reminders throughout the next several weeks. The Census Bureau reported that for every percentage point increase in mail response, taxpayers saved an estimated \$85 million in federal funds. The national mail participation rate was 72%. The New York State mail participation rate was 67%. All of the counties in our region surpassed those rates with Genesee County at 80%, Livingston County at 81%, Monroe County at 77%, Orleans County at 80%, Ontario County at 82%, Seneca County at 80%, Wayne County at 81%, Wyoming County at 82%, and Yates County at 81%.

The Door-to-Door follow up phase started in early May, where Census takers visited households that did not mail back their questionnaire (or who did not receive a form delivered to them).

Simultaneously the Census Bureau conducted three major quality assurance operations from mid-April through early September including the Coverage Follow-Up Operation, Vacant Delete Check and Field Verification. The Coverage Follow-Up telephone operation was to clarify any questions or errors in questionnaires mailed in to the Census Bureau. The Vacant Delete Check operation was to ensure housing units classified as vacant (or nonexistent) were in fact unoccupied on April 1st. Field Verification was to verify whether an address exists and to confirm its geographic location, if it did not match an address in the Census Bureau file. These addresses were submitted by households who provided their census information without an identification number linked back to the Census Bureau’s address file.

The Census Bureau timeline indicates that from mid-May to the end of December 2010 they are in the Complete Questionnaire Data Capturing and Processing phase where once they obtain completed questionnaires either directly from respondents or from the door-to-door follow up phase, the data must be captured in an electronic format, processed, and then tabulated in order to provide state population totals necessary for the apportionment.

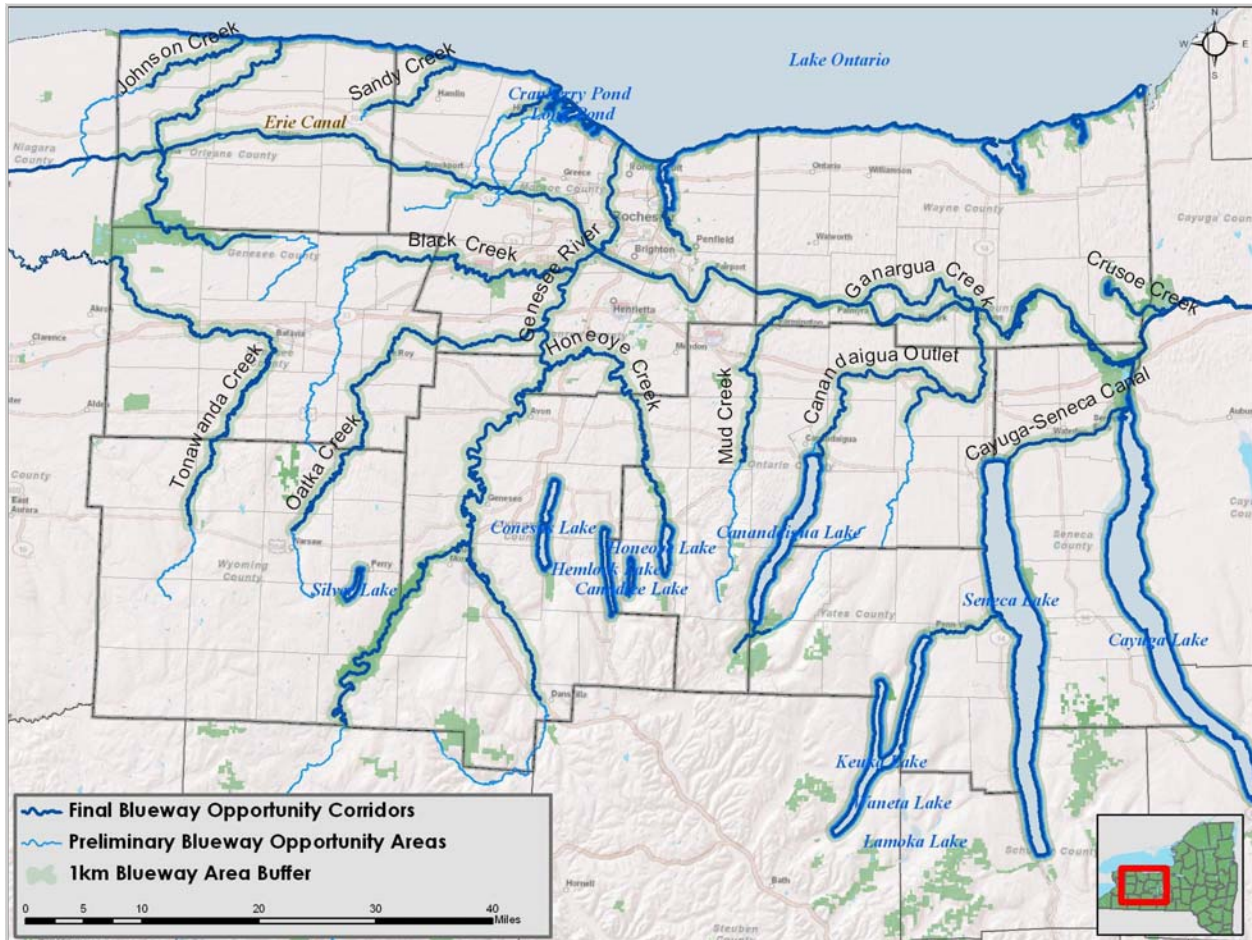
Starting in early 2011 the Census Bureau will begin releasing 2010 Census data products. For more information, visit the 2010 Census website at <http://2010.census.gov>

Blueway Analysis: *continued from page 1*

the report as “Blueway Opportunity Areas.” The inventory identifies the navigable reach of paddling routes and includes a comprehensive overview of all real and potential access points along those reaches. Basic cost estimates and recommendations are also provided for each corridor. The report concludes with a comprehensive overview of blueway planning considerations, intended to

help municipalities and blueway advocates to get started.

The final report is available for download at <http://gflrpc.org/blueways.htm>. Questions may be forwarded to Brian Slack, project manager, at bslack@gflrpc.org



Final Blueway Opportunity Areas. Taken from the Genesee - Finger lakes Regional Blueway Analysis Report, Map 2-2, <http://gflrpc.org/blueways.htm>

G/FLRPC's Revolving Loan Fund

Genesee/Finger Lakes Regional Planning Council manages a revolving loan fund which serves gap financing needs of small and medium sized manufacturing and service businesses located in Genesee, Livingston, Monroe, Ontario, Orleans, Seneca, Wayne, Wyoming and Yates Counties. One issue that is frequently associated with small and medium sized businesses is the level of capital available to them through traditional lending channels. The revolving loan fund works to mitigate that issue and strengthen what we consider our regional economy's backbone — small and medium-sized businesses.

The revolving loan fund provides \$20,000 to \$200,000 loans at a low fixed-interest rate for up to 8 years for those that qualify.

If you would like to learn more about the Revolving Loan Fund please visit:

www.gflrpc.org/ProgramAreas/EconomicDevelopment/RLF.htm or contact David Zorn at (585) 454-0190 x14 or dave.zorn@gflrpc.org

Genesee/Finger Lakes Regional Planning Council
50 West Main Street, Suite 8107
Rochester, NY 14614

PRSRT STD
U.S. POSTAGE
PAID
ROCHESTER, NY
PERMIT NO. 836

A Sense of Place

Holland Land Office Museum

Located on Main Street in Batavia, the Holland Land Office Museum provides a unique overview of the Holland Land Purchase and the history of Western New York. The Holland Land Purchase consisted of the acquisition of approximately 3,250,000 acres of land from about 12 miles west of the Genesee River to the present day western border of New York State.

After completing the purchase, the Holland Land Company hired Joseph Ellicott to survey the newly acquired land. The surveying work began in 1798 and was completed three years later. With the surveying work completed the Holland Land Office was established in 1801 in Batavia to begin sales of the newly acquired land. By 1840 all of the acquired land had been sold to investors or settlers and the Holland Land Company dissolved six years later.

The building, however, has been preserved and now serves as the Holland Land Office Museum providing visitors with a unique look at Western New York History.

The Museum is open Tuesday-Saturday and seasonally on Sunday's.

For more information visit:
<http://www.hollandlandoffice.com/>

Genesee/Finger Lakes Regional Review

Volume 7, Number 2
Fall 2010

Genesee/Finger Lakes Regional Review
is published by the
Genesee/Finger Lakes
Regional Planning Council

Genesee/Finger Lakes Regional Planning Council
is a public entity that serves its nine member
counties* with planning, economic develop-
ment, data resources, and other program areas.

**Genesee, Livingston, Monroe, Ontario, Orleans,
Seneca, Wayne, Wyoming, and Yates*

Genesee/Finger Lakes Regional Planning Council
50 West Main Street, Suite 8107
Rochester, NY 14614
www.gflrpc.org
Telephone: 585-454-0190
Fax: 585-454-0191
Email: gflrpc@gflrpc.org