

Genesee/Finger Lakes REGIONAL REVIEW

NEWSLETTER OF THE GENESEE/FINGER LAKES REGIONAL PLANNING COUNCIL

Volume 8, Number 1, Spring 2011

Black Creek and Oatka Creek Watershed Management Plans Underway

Draft "Characterization" Reports Completed for both Watersheds

By Brian Slack, AICP – Senior Planner

In 2009 G/FLRPC commenced one of its most anticipated watershed planning projects in recent years. The *Intermunicipal Planning for Black and Oatka Creek Watersheds* project was made possible with funds provided under Title 11 of the Environmental Protection Fund granted to the Town of Wheatland through the New York State Department of State (DOS). Working in conjunction with the Black Creek Watershed Coalition and Oatka Creek Watershed Committee, a proposal was submitted to DOS to prepare separate, stand-alone watershed management plans for both watersheds. That proposal was awarded funding and in the summer of 2009 two Project Advisory Committees were organized to manage the projects in their respective watersheds. The first major component of this project – watershed "characterization" reports for both watersheds – was recently completed in draft form and will be presented to the public for comment in the spring of 2011.

A watershed is a land area that drains to a common waterway, such as a stream, lake, estuary, wetland, or ultimately the ocean. Watershed plans are a means to mitigate or prevent water quality problems that result from both point and non point sources of pollution. The purpose of a watershed plan is to provide an analytic framework to both *restore and protect* water quality in instances where the resource may be threatened or impaired. The process does not target any specific threat or problem; rather it seeks to identify all issues affecting water quality within a geographic

area of focus and begin to identify and prioritize amenable approaches and solutions to those issues.

The Black and Oatka Creeks are key tributaries of the Genesee River that together drain over 418 square miles across portions of Genesee, Livingston, Monroe, Orleans and Wyoming Counties. Within these two watersheds exists a diverse array of land uses including highly-productive agricultural lands, important natural and historical heritage areas like Bergen Swamp and the Caledonia Fish Hatchery, historic

See Black and Oatka Creeks: continued on page 5



Spring Creek in the Black Creek Watershed. Photo taken by Charlie Knauf, Monroe County Department of Health.

Upcoming Events

Spring Local Government Workshop, May 13, 2011, Burgundy Basin Inn, Pittsford, New York.
For more information see insert in this newsletter and visit <http://www.gflrpc.org/Spring2011.htm>

For further information call 585-454-0190, email gflrpc@gflrpc.org

Recent Genesee/Finger Lakes Regional Planning Council Presentations

- October 28, 2010 - *Watershed Planning: Current Status and Next Steps* presentation at the Black Creek and Oatka Creek Watershed Symposium
- November 17, 2010 - *Regional Planning for Green Stormwater Retrofits* presentation at the Growing Green Infrastructure in New York State Symposium
- January 4, 2011 - *Town and Village of Arcade All Hazard Mitigation Plan Update* presentation to the public and Village Board

Upcoming Events

- *Spring Local Government Workshop*, May 13, 2011, Burgundy Basin Inn, Pittsford, New York. For more information see insert in this newsletter and visit <http://www.gflrpc.org/Spring2011.htm>.
- *Soil Erosion and Sediment Control and Green Infrastructure for Stormwater Management*, April 9, Ontario County Safety Training Facility. To register, contact Sarah Meyer at smeyer@hws.edu or Jayme Breschard at jbreschard@gflrpc.org. For more information visit <http://fli.hws.edu/workshops.asp>.

2009-2010 Comprehensive Economic Development Strategy (CEDS) Complete

By Greg Albert - Senior Planner

In December 2010 G/FLRPC approved the 2009-2010 Comprehensive Economic Development Strategy (CEDS) for the Genesee-Finger Lakes Economic Development District. The Genesee-Finger Lakes Economic Development District includes Genesee, Livingston, Monroe, Ontario, Orleans, Seneca, Wayne, Wyoming and Yates Counties and the City of Rochester.

The CEDS serves as an economic development planning document for the District and is intended to promote sustainable economic development throughout the District and strengthen the District's economy. The completed CEDS identifies priority projects that can take advantage of funding opportunities.

The CEDS provides a background of G/FLRPC, who serves as the Economic Development District Organization; utilizes current local, regional and state data to provide an overview of the District's demographic and economic trends; details current state and regional economic development programs and activities; considers past and present development actions; and identifies the economic development project priorities of the District.

The CEDS also sets forth ten economic development goals and corresponding objectives, a strategy to achieve these goals, and a work program designed to promote and assist in the implementation of the strat-

egy. Additionally, G/FLRPC uses the CEDS as a guide for its annual economic development work program.

Development of the 2009-2010 CEDS began in June 2010 with input from three CEDS stakeholder sessions. Stakeholders from throughout the Region were invited to attend these CEDS input sessions, which were held in Geneva on June 28, Rochester on June 29, and Batavia on June 30. Individual meetings were held in July with each Member County and the City of Rochester as well as with other regional economic development organizations to discuss their specific economic development priorities. The feedback from these meetings and the stakeholder input sessions helped to shape the priority projects and goals identified within the CEDS.

Throughout the 2011 calendar year G/FLRPC will be working closely with the District and economic development stakeholders to implement the economic development goals and objectives identified within the 2009-2010 CEDS.

For more information on the CEDS and to download the 2009-2010 CEDS see:
<http://gflrpc.org/ProgramAreas/EconomicDevelopment/CEDS.htm>

State of the Regional Landscape: Genesee-Finger Lakes Regional Inventory of Culturally Significant Areas Report Complete

By Jayme Breshard - Senior Planner

A cultural landscape inventory was conducted for the nine county Genesee-Finger Lakes Region between April 2010 and January 2011 by G/FLRPC, with a final report presentation made to the Planning Committee of the Genesee Transportation Council (GTC) on February 10, 2011 and final consideration by the GTC Board expected by March 10, 2011. Fifty-six cultural landscapes representative of the region's social, industrial, agricultural, recreational, commercial, and transportation history were identified by this project through the Unified Planning Work Program (UPWP). The purpose of this project was to survey and document regionally-significant cultural landscapes for GTC's *Long Range Transportation Plan for*

the Genesee-Finger Lakes Region: 2035 (LRTP 2035) in order to satisfy the capabilities, needs, and objectives of the region's transportation system while minimizing potential conflicts with community character.

G/FLRPC worked together with the nine County Planning Departments and County Historian's Office in the recommendation of cultural landscapes for this regional inventory. Based on National Park Service (NPS) standards, cultural landscapes are categorized by four types: historic designed landscapes, historic vernacular landscapes, historic sites, and ethnographic landscapes. A list of approximately 10 to 15 regions. See *Inventory of Culturally Significant Areas: page 4*



The Batavia VA Medical Center in Genesee County is representative of a modern campus with its elliptical organization of Neoclassical Style brick buildings towering above an open landscape. Photo taken by Jayme Breshard, Senior Planner.

G/FLRPC's Revolving Loan Fund

By David Zorn - Executive Director

Genesee/Finger Lakes Regional Planning Council manages a revolving loan fund which serves gap financing needs of small and medium sized manufacturing and service businesses located in Genesee, Livingston, Monroe, Ontario, Orleans, Seneca, Wayne, Wyoming and Yates Counties.

One issue that is frequently associated with small and medium sized businesses is the level of capital available to them through traditional lending channels. The revolving loan fund works to mitigate that issue and

strengthen what we consider our regional economy's backbone — small and medium-sized businesses.

The revolving loan fund provides \$20,000 to \$200,000 loans at a low fixed-interest rate for up to 8 years for those that qualify.

If you would like to learn more about the Revolving Loan Fund please visit:

www.gflrpc.org/ProgramAreas/EconomicDevelopment/RLF.htm or contact David Zorn at (585) 454-0190 x14 or dave.zorn@gflrpc.org

Inventory of Culturally Significant Areas: *continued from page 3*

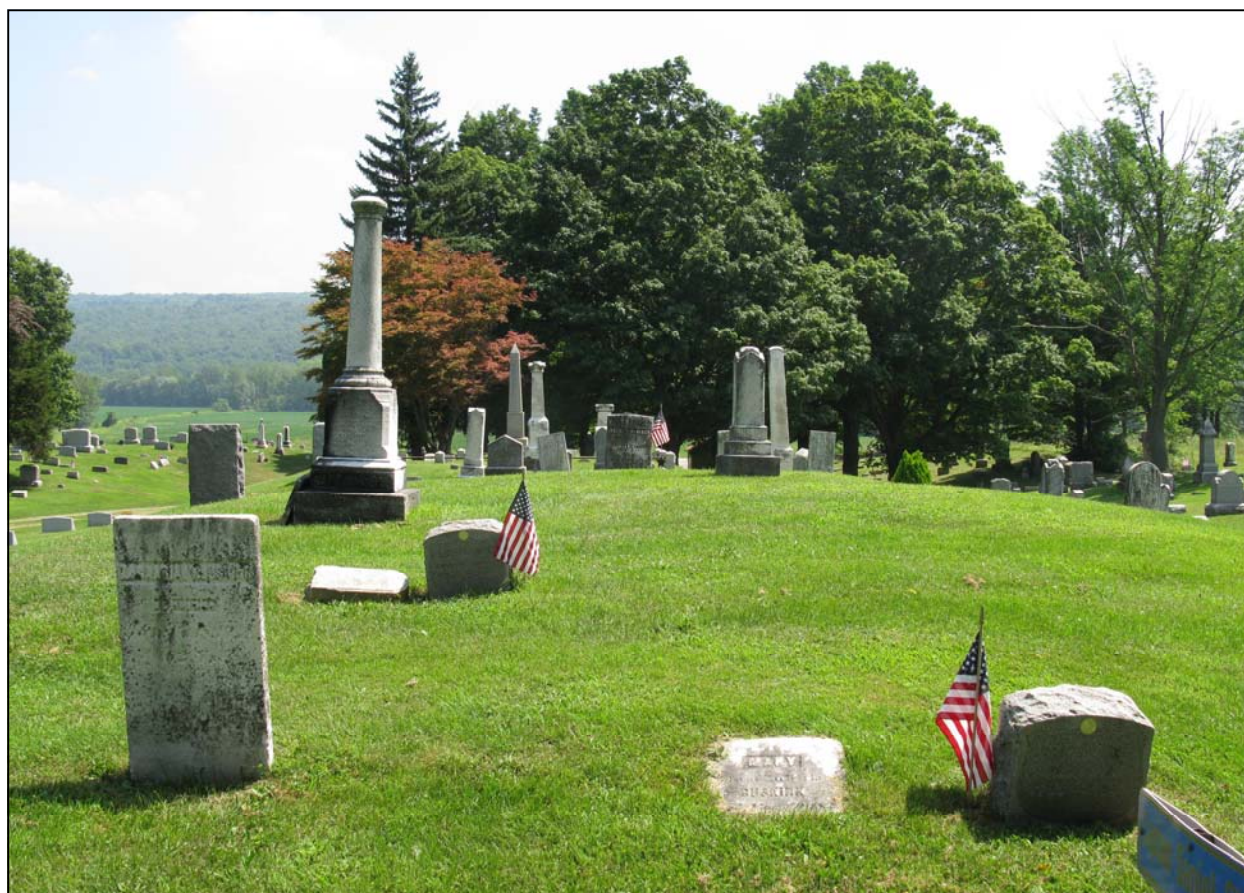
ally-significant sites was asked to be assembled by each of G/FLRPC's nine member counties plus the City of Rochester. Using guidelines for survey and documentation established by the NPS and the New York State Historic Preservation Office (NYSHPO), G/FLRPC narrowed these recommendations to about six to eight cultural landscapes per county for documentation, ranging from churchyards and cemeteries to parks and conservation areas to residential subdivisions and industrial complexes. An active geographic information system (GIS) file was also developed for each county and GTC for those documented sites.

In addition to a 95-page report with color photographs, several potential implementation measures are anticipated from the *Genesee-Finger Lakes Regional Inventory of Culturally Significant Areas*. First, GTC has

submitted a National Trust Preservation Fund application to the National Trust for Historic Preservation's Northeast Office to conduct an educational workshop about cultural landscapes based on the report. An educational session proposal is also being proposed using this project as a case study for the upcoming National Preservation Conference in Buffalo, NY in October, 2011. Lastly, the NYSHPO has been provided the opportunity to review the entire report and consider the documented sites for eligibility to the National Register of Historic Places. Interested municipalities and property owners should consult with NYSHPO for further comments.

The full report is available on the G/FLRPC website at:

<http://www.gflrpc.org/Publications/CulturallySignificantAreas/index.htm>



Union Cemetery in the Town of Conesus, Livingston County is an exemplary representative of the Romantic Style of landscape design with its uneven stand of trees, rolling terrain, and directed views opening onto broad vistas. Photo taken by Jayme Breschard, Senior Planner.



Genesee/Finger Lakes Regional Planning Council

Spring 2011 Regional Local Government Workshop

Friday, May 13, 2011

Burgundy Basin Inn, Pittsford, New York

Fall Local Government Workshop Co-sponsored By:

Genesee County Planning Board • Livingston County Planning Department • Monroe County Planning and Development Board
Ontario County Planning Department and Board • Orleans County Planning Board • Seneca County Planning Board
Wayne County Planning Board • Wyoming County Planning Board • Yates County Planning Department

For most municipalities the Local Government Workshop fulfills state law requiring training for local planning officials. A Certificate of Participation may be requested for the number of hours of attendance.

Workshop Registration

Individual: \$50 (\$60 after May 5, 2011)

Vendor/Exhibitor (includes 2 registrations): \$350

All registrations include continental breakfast & buffet lunch

PLEASE PRE-REGISTER BY May 5, 2011

SORRY NO REFUNDS AFTER MAY 5

Who Should Attend

Municipal Board Members and Elected Officials • Planning Board Members • Zoning Board of Appeals Members • County and Municipal Employees • Enforcement Officers • Planners • Land Use Professionals • Attorneys • Consultants • Public Works and Highway Departments • Engineers and Architects • Municipal Commissions • Municipal Review and Advisory Boards and Committees • Concerned Citizens

Burgundy Basin Inn

1361 Marsh Road
Pittsford, New York 14534
585-248-2660

From I-490 East to Route 31 Exit #26, Route 31 West for approximately 1/2 mile. Turn left onto Marsh Road. Approximately 1 1/2 miles on right.

From I-490 West to Bushnell Basin Exit #27. Right onto Route 96. Approximately 1/3 mile, right onto Marsh Road. Approximately 1/4 mile on left.

For additional directions visit: <http://www.burgundybasin.com/images/Map.pdf>

For more information and Workshop updates visit www.gflrpc.org/Spring2011.htm

Workshop Guide advertisements are available in full, 1/2, and 1/4 page sizes. Please contact David Zorn at G/FLRPC for details.

Questions and Information: David Zorn, 585-454-0190 x14, dave.zorn@gflrpc.org

*Please note there is a separate charge for CLE credit that is not covered in the registration fee. It is payable at the session offering the credit.
**Registration for CLE and CEO credit is done at the Workshop itself within the session.

Registration Form - Spring 2011 Local Government Workshop

Name: _____

Municipality/Company/Organization _____

Address: _____ City: _____ County: _____ State: _____ Zip: _____

Telephone Number (w/Area Code): _____ Email: _____

Please Circle the sessions you will be attending:

A1	A2	A3	A4		
B1	B2	B3	B4	B5	
C1	C2	C3	C4	C5	C6

Registration Fee:

\$50 per person, \$60 per person after May 5,
\$350 per vendor/exhibitor

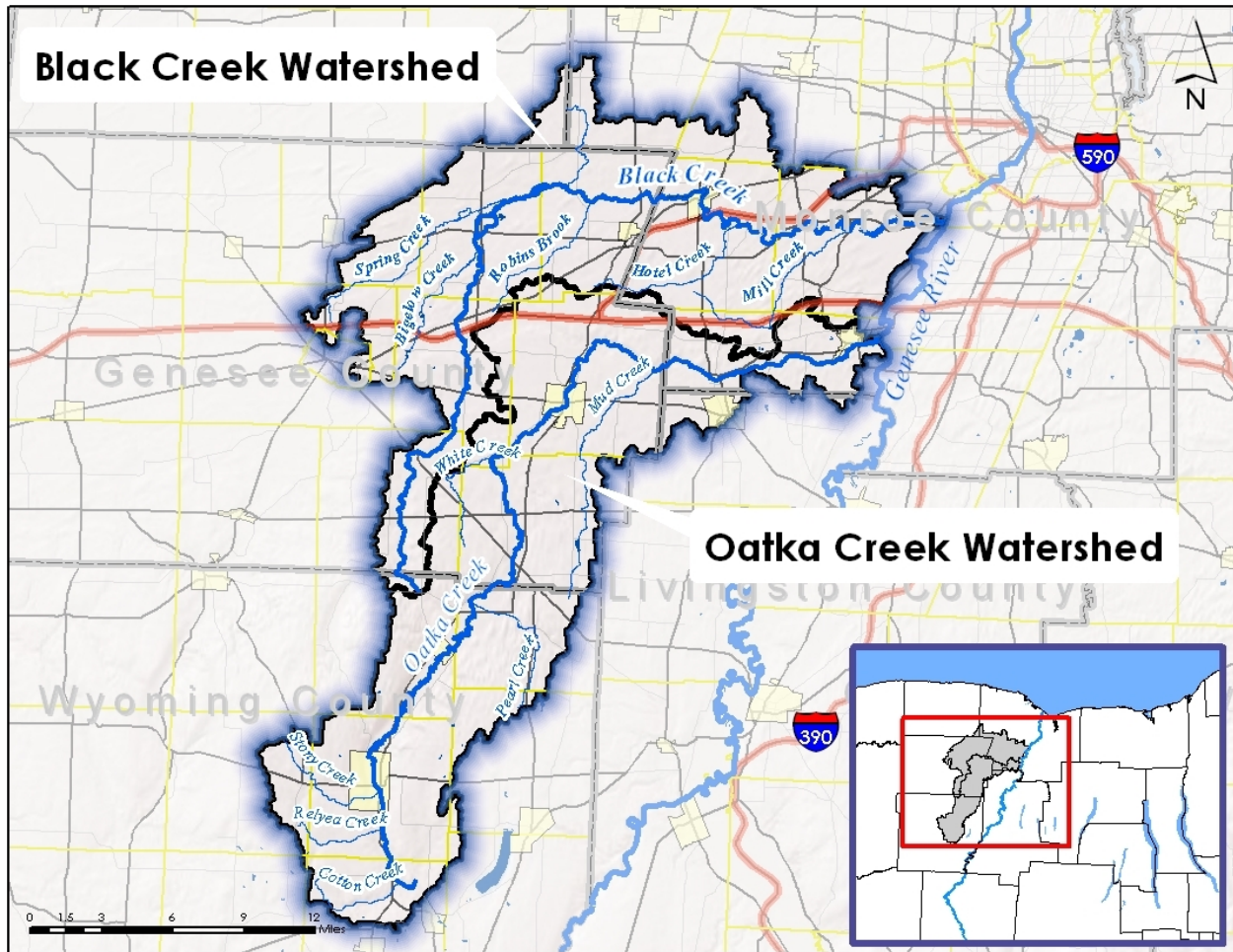
Please include voucher or payment with all registrations. Checks payable to: G/FLRPC

Mail Registration form and payment to:

Genesee/Finger Lakes Regional Planning Council
50 West Main St, Suite 8107
Rochester, NY 14614

8:00-9:00	Registration, Continental Breakfast and Exhibit Area		
9:00-10:00	<p>A1 Planning Board Overview, NYSDOS</p> <p>This basic course addresses the powers and duties of town, village, and city planning boards and commissions. The administrative and regulatory roles of the planning board, including its review of site plans, special use permits, and subdivision plats are discussed, along with the planning board's role in the municipal comprehensive plan. The importance of board procedures, referral to the county planning agency, and making findings are also covered. (2 CEO and 2 CLE credits)</p>	<p>B1 The Evolution of the Stormwater Program-From the End of Pipe to Source Control with Green Infrastructure, Donald W. Lake, Visiting Instructor at SUNY-ESF</p> <p>This presentation will highlight the planning concepts and runoff reduction practices of Green Infrastructure contained in the newly revised New York State Stormwater Design Manual. The practices and their impacts will be demonstrated with actual site examples.</p>	<p>C1 Affordable Housing, Roger W. Brandt, Jr. and Lawrence Jones, Rochester's Cornerstone Group, Ltd. and Susan Offenweller, PathStone Corporation</p> <p>Developers of affordable or workforce housing will review the parameters for this specialized form of rental communities. Seeking to clarify many of the myths of income-based housing, two leading developers in the region will address the processes and the needs of this unique form of housing, while providing a case study on how the financial plan, funding and the selection of eligible tenants are executed.</p>
10:00-10:45			<p>C2 Local Laws and Regulations and the State Building and Fire Codes, Richard Thomson, Codes Division, New York State Department of State</p>
10:45-11:00	Break and Exhibit Area	Break and Exhibit Area	Break and Exhibit Area
11:00-12:00	<p>A2 How to Conduct Effective Meetings and Hearings, NYSDOS</p> <p>This session addresses the goals and requirements associated with holding meetings, in contrast to the purposes and legal requirements surrounding a public hearing. It explores the role of the chairperson in conducting effective meetings and hearings, and includes a discussion of how to manage the public and the media in the context of a hearing or meeting. Also addressed are aspects of the Open Meetings Law, including executive sessions, quorums, minutes, and public notices. (1 CEO and 1 CLE credit)</p>	<p>B2 NYS Homes and Community Renewal - Overview of the Home Program, Thomas Van Nortwick, NYS Homes and Community Renewal</p> <p>This session will give an overview of the Home Program, how can it be accessed and how to fit it to your community.</p>	<p>C2 (continued)</p> <p>The session will cover the history of the Codes in New York State, important features of 19 NYCRR Part 1203, the State Code and agricultural buildings, the language differences between laws, the State Code and the planning board, zoning boards vs. State Regional Board of Review, and changes to the 2007 Uniform Code effective January, 2010.</p>
12:00-1:00	Lunch and Exhibit Area		
1:00-2:00	<p>A3 Planning for Pedestrians, NYSDOS</p> <p>Increasing the availability and attractiveness of pedestrian facilities can help revitalize downtowns, provide an alternative means of transportation, and encourage a healthier lifestyle. This session provides an overview of several common municipal land use tools (zoning, site plan review, subdivision regulations, and special use permit). The program then explores how these tools can be tailored to improve pedestrian conditions by the requirement of sidewalks, pathways and other pedestrian facilities, as well as through the encouragement of better site design.</p>	<p>B3 Livable New York - Helping Municipalities Create Livable Communities in the 21st Century, Vera Prosper, PhD, NYS Office for the Aging</p> <p>This session will review some major demographic and social changes that are transforming New York's communities; will discuss the components of Livable New York, the State's education, training, and technical assistance initiative, which was developed in response to these changes; and will present planning and development examples from the Livable New York Community Resource Manual.</p>	<p>C3 Clean Water and Drinking Water State Revolving Funds: What's Available, How It Works and Other News, J.C. Smith, Environmental Facilities Corp.</p> <p>The Clean Water and Drinking Water State Revolving Funds provide low cost financing for construction and improvement of wastewater treatment, water supply, and certain other water quality and drinking water supply and protection projects. Information will be provided about the major features of these programs, information and actions needed to establish eligibility for funding, annual deadlines and highlights of new programs and initiatives.</p>
2:00-2:30			<p>C4 Marcellus 101, William Kappel, US Geological Survey</p> <p>This presentation will address the mechanics of the drilling and hydrofracking in the Marcellus and Utica Shale formations in New York. Topics addressed include where the black shales are found within New York; drilling techniques; the hydrofracking process; the quantity of water needed for the hydrofracking; and the quality and possible means of treatment of the flowback and the formation waters. Concerns about habitat fragmentation and pipeline construction in regard to the collection of the produced gas throughout the region will also be addressed. Finally, Article 23 of the Environmental Conservation Law will be presented in regards to what municipalities can and cannot do in regard to regulating gas well drilling and related activities in their jurisdiction.</p>
2:30-2:45	Break and Exhibit Area		
2:45-3:00	<p>A4 Zoning Board of Appeals Overview, NYSDOS</p> <p>This introductory course to the zoning board of appeals focuses on the statutory tests boards must follow to grant use and area variances and proper handling of zoning interpretations. Meeting procedures and notice requirements will also be discussed, along with the ZBA's relationship with enforcement officials and the planning board, and the importance of making good findings. (2 CEO and 2 CLE credits)</p>	Break and Exhibit Area	Break and Exhibit Area
3:00-3:15			
3:15-4:00		<p>B4 Implementing the Smart Growth Infrastructure Act, Paul Beyer, NYSDOS</p> <p>A discussion of the requirements and intent of the new Smart Growth Infrastructure Act (Chapter 433 of the Laws of 2010). Mr. Beyer will give a policy overview of the intent behind the Infrastructure Act, with some history and background on the Governor's Smart Growth Cabinet and similar Smart Growth reforms in other states. He will then walk through the major provisions of the new law, discussing the 10 principles of Smart Growth contained in the law and the steps that state agencies are taking to comply with the law. Mr. Beyer will also talk about the role that planners and municipalities can play in facilitating compliance and promoting Smart Growth principles on the local and regional levels.</p>	<p>C5 Land Use and Energy Development, David Kay, Cornell University</p> <p>This presentation will focus on the forces influencing land use change and the impacts various forms of energy development will likely have on New York landscapes.</p>
4:00-5:00		<p>B5 Livable Communities: The Big Picture, Pam Whitmore, Genesee County Office for the Aging, Deborah Kerr-Rosenbeck, Genesee County Youth Bureau, Felipe Oltramari and Jill Babinski, Genesee County Department of Planning</p> <p>The Livable Communities concept has recently become a part of the existing Genesee County Comprehensive Planning Process. By considering the Livable Communities definition in terms of the built environment, human service programming and daily government functions, Genesee County has begun to actively put this concept in place. With the engagement of local municipal boards, including Planning and Zoning Board of Appeals, Genesee County hopes to create a more livable community. At this presentation, ideas and goals will be discussed that will aid others in making their community more livable for today and the future.</p>	<p>C6 Municipal Tools, Regulations, and Planning for Gas Drilling Impacts, Darby Kiley, Tompkins County</p> <p>Municipalities are preparing for potential impacts that shale gas drilling and production will have on their communities. In many counties, task forces are working together in an effort to share resources and information. Municipal jurisdiction and authority are limited based on current laws and proposed legislation, leaving municipalities to rely on the state to adequately protect environmental resources and community character. Municipal tools range from road preservation laws to updating comprehensive plans to aquifer protection and much more.</p>

Black and Oatka Creeks: *continued from page 1*



Map of the Black and Oatka Watersheds created by Brian Slack, AICP, Senior Planner.

villages, scenic countryside, and densely-developed suburban neighborhoods. The challenge will be to recognize this diverse array of activity and begin to assess the scope of their impact on water resources and to then establish goals for water quality improvement based on those assessments.

G/FLRPC is being assisted in this effort by Dr. Elizabeth Moran and her staff at EcoLogic LLC, based in Cazenovia, NY. Dr. Moran is a water quality specialist with extensive experience in surface water quality and aquatic habitat issues. G/FLRPC will also be drawing from the extensive knowledge and experience found within the membership of both watershed advocacy groups. A number of these individuals have joined the Project Advisory Committees for both projects, bringing a diverse mix of local citizens, agency officials and municipal representatives to the process.

At present, PACs are reviewing the first major component of the project – watershed “characterization” reports. These reports gather existing information on the watersheds in an effort to create a data inventory which will create the foundation for subsequent project tasks. After these draft reports have been revised, G/FLRPC will open them up to public review and will arrange separate public meetings on the subjects, likely to be scheduled for May 2011.

For more information on the *Intermunicipal Planning for Black and Oatka Creek Watersheds* project visit the project website at <http://gflrpc.org/blackoatka.htm> or contact Brian Slack at bslack@gflrpc.org

Genesee/Finger Lakes Regional Planning Council
50 West Main Street, Suite 8107
Rochester, NY 14614

PRSRT STD
U.S. POSTAGE
PAID
ROCHESTER, NY
PERMIT NO. 836

A Sense of Place

Rochester's Forgotten Frederick Douglass House

Last year the house at 271 Hamilton Street in the City of Rochester was designated a local historic landmark because it was once owned and occupied by Abolitionist and Woman's Rights Activist Frederick Douglass. It was previously believed that none of Douglass's Rochester homes were still in existence.

In 2003, Jean Czerkas and Tim O'Connell determined that there was a lost Douglass residence remaining in the City of Rochester. They found receipts for both a marble headstone and fireplace that each tied Douglass to the Hamilton Street home. According to their research, Frederick Douglass bought the property in 1855 and gave the house to his daughter in 1872. Douglass owned the house again from 1877 until his death in 1895. The home is currently a private residence.

Information was gathered from landmarkso-ciety.org, rocnow.com, and rochester.ynn.com

Genesee/Finger Lakes Regional Review

Volume 8, Number 1
Spring 2011

Genesee/Finger Lakes Regional Review
is published by the
Genesee/Finger Lakes
Regional Planning Council

Genesee/Finger Lakes Regional Planning Council
is a public entity that serves its nine member
counties* with planning, economic develop-
ment, data resources, and other program areas.

**Genesee, Livingston, Monroe, Ontario, Orleans,
Seneca, Wayne, Wyoming, and Yates*

Genesee/Finger Lakes Regional Planning Council
50 West Main Street, Suite 8107
Rochester, NY 14614
www.gflrpc.org
Telephone: 585-454-0190
Fax: 585-454-0191
Email: gflrpc@gflrpc.org