

APPENDICES

Genesee – Finger Lakes Regional Blueway Analysis

An Inventory and Analysis of Regional Blueway Opportunity Areas

APPENDIX A: SELECTED REFERENCES

Flink, Charles A, Kristine Olka and Robert M. Searns. Trails for the Twenty-First Century: Planning, Design, and Management Manual for Multi-Use Trails. 2nd Ed. Washington: Island Press, 2001.

Florida Department of Environmental Protection, Office of Greenways and Trails. 2008 Update and Prioritization of the Recreational Trail Opportunity Maps for the State of Florida. 2008. Last viewed online June 2, 2010 at http://www.floridatrailnetwork.com/pdfs/Prioritization_2008_Final_Report.pdf

Freeman, Mark. The Adirondack Mountain Club Canoe Guide to Western and Central New York State. Lake George, NY: Adirondack Mountain Club, Inc., 2004.

US Access Board. Accessible Boating Facilities: A Summary of Accessibility Guidelines for Recreation Facilities. 2003. Last viewed online June 2, 2010 at <http://www.access-board.gov/recreation/guides/boating.htm>

US National Park Service Rivers, Trails & Conservation Assistance Program. Logical Lasting Launches: Design Guidance for Canoe and Kayak Launches. 2004. Last viewed online June 2, 2010 at <http://www.nps.gov/ncrc/programs/rtca/helpfultools/launchguide.pdf>

Genesee – Finger Lakes Regional Blueway Analysis

An Inventory and Analysis of Regional Blueway Opportunity Areas

APPENDIX B: STAKEHOLDER MEETING INVITATION/PRESS RELEASE



Genesee/Finger Lakes Regional Planning Council

JAMES HOFFMAN, Chair • JERRY DAVIS, Vice Chair • JEFFREY R. ADAIR, Treasurer • DAVID S. ZORN, Executive Director

FOR IMMEDIATE RELEASE

Contact: Brian C. Slack, AICP
Senior Planner/Project Coordinator
Genesee/Finger Lakes Regional Planning Council
bslack@glrpc.org 585.454.0190 x21

Blueway Planning Initiative Underway

Canoe and kayak stakeholders asked to lend their input to a regional planning project

Genesee/Finger Lakes Regional Planning Council (G/FLRPC) has recently begun working on the *Genesee-Finger Lakes Regional Blueway Analysis* project, which will focus on assessing and enhancing our region's recreational paddling resources. A major component of this project involves seeking input from vested stakeholders associated with paddle sports, outdoor recreation, waterfront planning, water quality advocacy, and other related areas of interest. Information on the dates and times of these meetings can be found at the end of this release.

It is our hope that canoe and kayak stakeholders will be able to join us at one of these meetings in order to learn more about the project and to offer their input on the future of the Region's recreational paddling network.

Project Description

"Blueways" are small boat and paddling routes that combine recreation and environmental awareness and allow users to travel to designated stops along the way for rest, overnight stays, and enjoyment of land-based attractions in the vicinity. G/FLRPC, through the *Genesee-Finger Lakes Regional Blueway Analysis* project, will seek to identify, describe and rank lake, canal and riparian corridors throughout the nine-county Genesee-Finger Lakes Region based upon their suitability for blueway use and designation.



The G/FLRPC Region includes Genesee, Livingston, Monroe, Ontario, Orleans, Seneca, Wayne, Wyoming, and Yates Counties

Project Goals

Specific project goals will include the identification and mapping of watercourses in the Region that are suitable for blueway designation and the assessment of each corridor's level of "project readiness," based on criteria such as: facilities and infrastructure related to accessibility (including signage, parking, launches, etc.) and connectivity to other important recreational and transportation corridors.

Local stakeholder outreach and involvement will be a central component to the project in order to foster and encourage local projects and to establish an atmosphere of regional cooperation and accomplishment.

- 2 -

Primary Project Outcomes

The project will result in a "ready-to-use" plan that will advance the goal of establishing a statewide blueway trail and local spur-trails and encourage municipalities and local leaders in the region to explore, utilize, and unlock the potential of their local water resources. The document will present a clear framework for blueway development within the G-FL Region in a manner that facilitates the implementation of individual projects.

The analysis will seek to facilitate regional collaboration by establishing a reliable set of baseline data that can be utilized by neighboring municipalities toward the implementation of projects that transcend local municipal boundaries, thereby synthesizing the vision for a statewide network of paddling trails.

Stakeholder Meetings

G/FLRPC will be hosting three regional stakeholder meetings in an effort to inform paddling enthusiasts and other paddling stakeholders about the project and to solicit important input from them. Information on the date, time and place of these meetings is included below. Stakeholders will be provided with a presentation on the project and will then be asked to lend their knowledge and expertise regarding access point locations, site conditions, and paddling conditions. Attendees will also be asked to lend their general thoughts and concerns pertaining to the project as a whole.

Meetings have been organized geographically in an effort to focus the discussion(s) on specific regions, although the discussions will not be limited to just those areas. The success of a blueway system is based largely on connectivity from one corridor to another; participants are therefore encouraged to discuss waterways outside of these focus areas. Further, if you are unable to attend a meeting in your preferred region, please feel free to attend at another location – the general subject matter will be the same at each meeting.

Who Should Attend?

This invitation is being extended to locally-elected officials, novice and expert paddling aficionados, commercial outfitters, outdoor enthusiasts, waterfront planners, and water quality advocates.

We do ask that you please **RSVP by June 12th** so that staff is aware of the approximate number of people attending. RSVPs can be emailed or phoned to Brian Slack, bslack@glrpc.org / 585.454.0190 x21.

Meeting Schedule and Locations

June 15th 7:00pm – Finger Lakes Institute – Geneva, NY
June 16th 7:00pm – Iroquois National Wildlife Refuge – Basom, NY
June 17th 7:00pm – Genesee Waterways Center – Rochester, NY

Directions to each site may be found at the project website:

<http://glrpc.org/blueways.htm>

The Genesee-Finger Lakes Regional Blueway Trails Analysis Plan is partially funded through the New York State Department of State with funds provided under Title 11 of the Environmental Protection Fund Act.

50 West Main Street • Suite 8107 • Rochester, NY 14614 • Tel: 585.454.0190 • Fax: 585.454.0191 • glrpc@glrpc.org • www.glrpc.org

Member Counties: Genesee • Livingston • Monroe • Ontario • Orleans • Seneca • Wayne • Wyoming • Yates

Genesee – Finger Lakes Regional Blueway Analysis

An Inventory and Analysis of Regional Blueway Opportunity Areas

APPENDIX C: SITE VISIT FORM

G-FL Regional Blueway Analysis
Site Visit Form

<u>Site Number/Description</u>		<u>Field Map Number/Name that Site is Located On</u>	
GPS Coordinates Taken Lat. N _____ Long. W _____		Road/Intersection	Municipality
<u>General Site Location Description</u> Is the site an official launch area, sanctioned by local or state government? Is there cost of admission for entry? If not, is the site a sanctioned public open space or recreation area? If not, is the site presently used by the community as an open space or recreation area?			
<u>Parking</u> Number of off-street parking spaces Approx. number of on-street parking within a 200 foot radius			
<u>Signage</u> Make a brief account of all public and private signage on or directly abutting the site			
<u>Launch Description:</u> Primitive/Deliberate/ADA Compliant Describe: Water Quality			
<u>Other Complimentary Facilities</u> Note any other facilities that may be present at the site (Garbage/fish disposal, picnic tables, grills, etc.)			

Version 1.2 Created 10/21/09

Prepared by Genesee/Finger Lakes Regional Planning Council

This document was prepared for the New York State Department of State Division of Coastal Resources with funds under Title 11 of the Environmental Protection Fund

APPENDIX D: NEW YORK STATE RECREATIONAL USE STATUTES

New York State’s recreational use statutes fall under New York State Consolidated Laws, GENERAL OBLIGATIONS LAW, ARTICLE 9: Obligations of Care, TITLE 1: Conditions on Real Property.

Text of Law:

1. Except as provided in subdivision two,
 - a. an owner, lessee or occupant of premises, whether or not posted as provided in section 11-2111 of the environmental conservation law, owes no duty to keep the premises safe for entry or use by others for hunting, fishing, organized gleaning as defined in section seventy-one-y of the agriculture and markets law, canoeing, boating, trapping, hiking, cross-country skiing, tobogganing, sledding, speleological activities, horseback riding, bicycle riding, hang gliding, motorized vehicle operation for recreational purposes, snowmobile operation, cutting or gathering of wood for non-commercial purposes or training of dogs, or to give warning of any hazardous condition or use of or structure or activity on such premises to persons entering for such purposes;
 - b. an owner, lessee or occupant of premises who gives permission to another to pursue any such activities upon such premises does not thereby (1) extend any assurance that the premises are safe for such purpose, or (2) constitute the person to whom permission is granted an invitee to whom a duty of care is owed, or (3) assume responsibility for or incur liability for any injury to person or property caused by any act of persons to whom the permission is granted.
 - c. an owner, lessee or occupant of a farm, as defined in section six hundred seventy-one of the labor law, whether or not posted as provided in section 11-2111 of the environmental conservation law, owes no duty to keep such farm safe for entry or use by a person who enters or remains in or upon such farm without consent or privilege, or to give warning of any hazardous condition or use of or structure or activity on such farm to persons so entering or remaining. This shall not be interpreted, or construed, as a limit on liability for acts of gross negligence in addition to those other acts referred to in subdivision two of this section.
2. This section does not limit the liability which would otherwise exist
 - a. for willful or malicious failure to guard, or to warn against, a dangerous condition, use, structure or activity; or
 - b. for injury suffered in any case where permission to pursue any of the activities enumerated in this section was granted for a consideration other than the consideration, if any, paid to said landowner by the state or federal government, or permission to train dogs was granted for a consideration other than that provided for in section 11-0925 of the environmental conservation law; or
 - c. for injury caused, by acts of persons to whom permission to pursue any of the activities enumerated in this section was granted, to other persons as to whom the person granting permission, or the owner, lessee or occupant of the premises, owed a duty to keep the premises safe or to warn of danger.

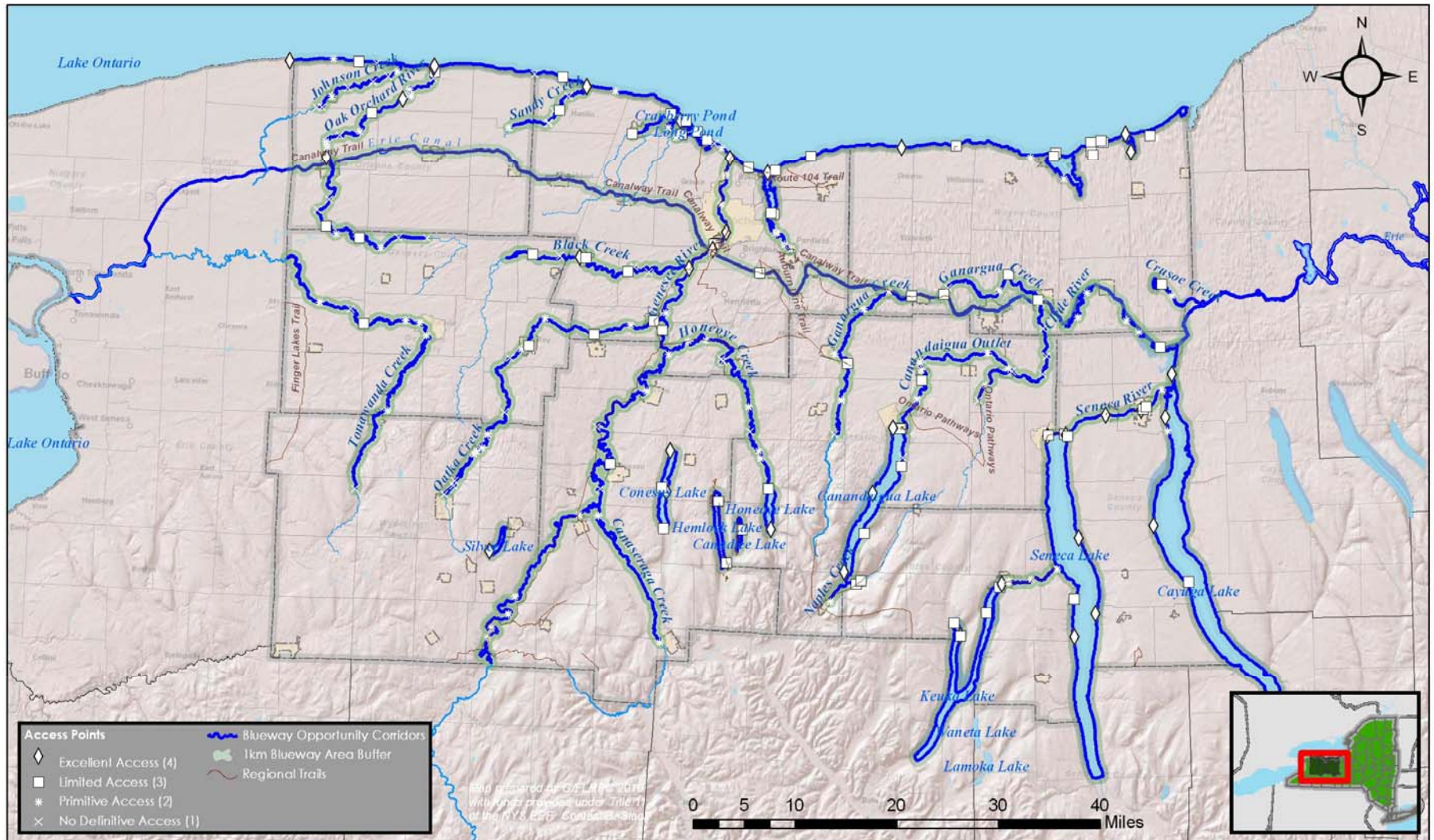
Nothing in this section creates a duty of care or ground of liability for injury to person or property.

Genesee – Finger Lakes Regional Blueway Analysis

An Inventory and Analysis of Regional Blueway Opportunity Areas

APPENDIX E: REGIONAL MAP/FULL LIST OF BLUEWAY OPPORTUNITY AREAS, ACCESS POINTS AND ASSOCIATED ATTRIBUTES

GENESEE FINGER LAKES REGIONAL BLUEWAY OPPORTUNITY AREAS AND ASSOCIATED ACCESS POINTS



Genesee – Finger Lakes Regional Blueway Analysis

An Inventory and Analysis of Regional Blueway Opportunity Areas

To the greatest extent possible, access points are listed in descending order from headwaters to outflow; lakes are listed in similar order from west to east. **Access Point Number order does not correspond to spatial order of sites.**

Access Pt. No.	Waterbody	Description	County	Municipality	Access Pt. Ranking	ADA Compliant ?	Comp. Facilities	Parking	Comments	LatDDM	LongDDM
92	Black Creek	West Sweden Rd	Genesee	Town of Bergen	3	N	None	2		43° 6' 24.448" N	77° 59' 13.330" W
93	Black Creek	State Rt 19	Genesee	Town of Bergen	1	N	None	2		43° 6' 23.454" N	77° 55' 59.542" W
94	Black Creek	Churchville County Park Boat Launch	Monroe	Town of Riga	4	N	P/O	3	Designated car top launch	43° 6' 20.066" N	77° 53' 39.484" W
95	Black Creek	Village of Churchville Overlook	Monroe	Town of Riga	3	N	O	3	Parking avail. at Village Hall	43° 6' 16.794" N	77° 52' 59.426" W
91	Black Creek	Black Creek County Park	Monroe	Town of Chili	3	N	B/P/H	3		43° 5' 14.363" N	77° 48' 4.010" W
90	Black Creek	State Rt 33A	Monroe	Town of Chili	1	N	None	1		43° 5' 39.307" N	77° 47' 20.159" W
89	Black Creek	Pfengle Property Town of Chili	Monroe	Town of Chili	1	N	None	1		43° 5' 15.209" N	77° 45' 34.776" W
88	Black Creek	Black Creek State Fishing Access Site	Monroe	Town of Chili	4	Y	T/B/P	3	Parking for 10 cars and trailers	43° 5' 40.261" N	77° 40' 53.159" W
53	Buttonwood Creek	North Greece Rd - Buttonwood Creek	Monroe	Town of Greece	2	N	None	3		43° 17' 43.566" N	77° 43' 55.164" W
135	Canadice Lake	Canadice Lake hard surface ramp	Ontario	Town of Canadice	3	N	T	2	Permit required; paddle/<10 horsepower boats only	42° 43' 26.990" N	77° 33' 51.005" W
144	Canandaigua Lake	Canandaigua Lake State Marine Park	Ontario	City of Canandaigua	4	Y	T/B/P	3	Parking for 110 cars and trailers	42° 52' 33.578" N	77° 16' 36.242" W
143	Canandaigua Lake	Rosepark Lakefront	Ontario	City of Canandaigua	3	N	H/O	3	Alternative site adjacent to Steamboat Landing	42° 52' 29.147" N	77° 15' 47.693" W
152	Canandaigua Lake	Rt 364 County Rest Area	Ontario	Town of Gorham	1	N	O	3	Refreshment stand	42° 50' 2.422" N	77° 15' 23.627" W
151	Canandaigua Lake	Deep Run Town Park	Ontario	Town of Gorham	3	N	B	3		42° 49' 14.408" N	77° 15' 34.351" W

Genesee – Finger Lakes Regional Blueway Analysis

An Inventory and Analysis of Regional Blueway Opportunity Areas

Access Pt. No.	Waterbody	Description	County	Municipality	Access Pt. Ranking	ADA Compliant ?	Comp. Facilities	Parking	Comments	LatDDM	LongDDM
150	Canandaigua Lake	Vine Valley Town Park	Yates	Town of Middlesex	3	N	P/O	1	Community beach area	42° 43' 24.578" N	77° 19' 38.276" W
146	Canandaigua Lake	Canandaigua Lake Fishing Access Site - Woodville	Ontario	Town of South Bristol	4	Y	T	3	Parking for 86 cars and trailers	42° 40' 6.856" N	77° 21' 50.076" W
145	Canandaigua Lake	Canandaigua Lake Fishing Access Site - Onanda Park	Ontario	Town of Canandaigua	4	Y	T/B/P/O	3	State park w/designated swimming area and day camp	42° 46' 55.834" N	77° 18' 47.776" W
142	Canandaigua Outlet	Steamboat Landing	Ontario	City of Canandaigua	3	N	H/O	3	Steamboat Landing; designated car top launch area	42° 52' 31.001" N	77° 15' 41.022" W
141	Canandaigua Outlet	Gaging Station - East Ave and Rt 488	Ontario	Town of Hopewell	2	N	None	1		42° 55' 5.380" N	77° 13' 58.354" W
140	Canandaigua Outlet	Canandaigua Outlet State Fishing Access Site	Ontario	Town of Manchester	3	N	O	3	Designated car top launch area	42° 56' 39.228" N	77° 13' 25.608" W
139	Canandaigua Outlet	Budd Village Park	Ontario	Town of Manchester	2	N	P/O	2	Active recreation at adjacent Village park	42° 57' 32.512" N	77° 13' 33.586" W
138	Canandaigua Outlet	Clifton St picnic area and overlook	Ontario	Village of Manchester	2	N	P	1		42° 58' 10.902" N	77° 13' 40.559" W
137	Canandaigua Outlet	State Rt 96	Ontario	Village of Manchester	1	N	None	2		42° 58' 27.473" N	77° 13' 25.590" W
153	Canandaigua Outlet	Three Mills County Park	Ontario	Town of Phelps	2	N	H	3		42° 59' 7.660" N	77° 5' 52.343" W
154	Canandaigua Outlet	Mill Street	Ontario	Town of Phelps	2	N	None	1		42° 57' 50.458" N	77° 3' 27.716" W
170	Canandaigua Outlet	N Wayne St	Ontario	Village of Phelps	1	N	None	1		42° 57' 37.058" N	77° 2' 57.091" W
167	Canandaigua Outlet	Fisher Rd	Ontario	Town of Phelps	1	N	None	2		42° 57' 27.493" N	76° 59' 21.624" W
166	Canandaigua Outlet	Gifford Rd	Ontario	Town of Phelps	1	N	None	2		42° 58' 59.916" N	76° 58' 57.965" W
165	Canandaigua Outlet	Alloway Rd	Wayne	Town of Lyons	1	N	None	2	Preferred exit; next exit point can be difficult	43° 1' 22.044" N	76° 59' 25.854" W

Genesee – Finger Lakes Regional Blueway Analysis

An Inventory and Analysis of Regional Blueway Opportunity Areas

Access Pt. No.	Waterbody	Description	County	Municipality	Access Pt. Ranking	ADA Compliant ?	Comp. Facilities	Parking	Comments	LatDDM	LongDDM
164	Canandaigua Outlet	Leach Rd	Wayne	Village of Lyons	1	N	None	1	Last exit opp. before spillway into Erie Canal	43° 3' 37.332" N	76° 59' 51.562" W
121	Canaseraga Creek	Gaging Station - Rt 436 and Scott Rd	Livingston	Town of Mt. Morris	2	N	None	3		42° 33' 36.018" N	77° 42' 57.096" W
117	Canaseraga Creek	Shaker Crossing	Livingston	Town of North Dansville	2	N	None	2		42° 44' 13.438" N	77° 50' 30.404" W
190	Cayuga Lake	Town of Ovid Park	Seneca	Town of Ovid	3	N	None	3		42° 39' 56.671" N	76° 41' 56.303" W
191	Cayuga Lake	Deans Cove State Marine Park	Seneca	Town of Romulus	4	Y	T/B	3	Parking for 48 cars and trailers	42° 44' 41.636" N	76° 46' 5.045" W
192	Cayuga Lake	Lower Lake Rd	Seneca	Town of Seneca Falls	2	N	None	3		42° 52' 50.077" N	76° 44' 43.282" W
193	Cayuga Lake	Cayuga Lake State Park	Seneca	Town of Seneca Falls	4	Y	T/B/P/C	3	Parking for 50 cars and trailers	42° 54' 1.112" N	76° 44' 58.693" W
208	Clyde River	River Rd South	Wayne	Town of Galen	2	N	None	2		43° 2' 25.746" N	76° 55' 28.864" W
209	Clyde River	River Rd North	Wayne	Town of Galen	2	N	None	2		43° 4' 29.201" N	76° 54' 28.974" W
210	Clyde River	Bentley Rd	Wayne	Town of Galen	2	N	None	2		43° 2' 11.301" N	76° 49' 50.236" W
211	Clyde River	Armitage Bridge	Wayne	Town of Galen	2	N	None	2		43° 1' 14.878" N	76° 48' 21.952" W
212	Clyde River	May's Point Rd	Seneca	Town of Tyre	3	N	None	3		42° 59' 56.585" N	76° 45' 45.991" W
125	Conesus Lake	Conesus Lake State Boat Launch - Pebble Beach	Livingston	Town of Livonia	4	N	B/P/O	3	Car top launch; Vitale Park nearby; 120 spaces	42° 50' 4.049" N	77° 42' 25.384" W
123	Conesus Lake	Conesus Lake State Boat Launch - East Lake Rd	Livingston	Town of Livonia	4	Y	T/B/P	3	Parking for 45 cars and trailers plus 25 cars	42° 46' 31.768" N	77° 42' 43.844" W
122	Conesus Lake	Conesus Inlet State Fishing Access Site	Livingston	Town of Conesus	3	N	O	3	Designated car top launch;	42° 43' 20.042" N	77° 42' 57.089" W

Genesee – Finger Lakes Regional Blueway Analysis

An Inventory and Analysis of Regional Blueway Opportunity Areas

Access Pt. No.	Waterbody	Description	County	Municipality	Access Pt. Ranking	ADA Compliant ?	Comp. Facilities	Parking	Comments	LatDDM	LongDDM
									parking for 40 cars		
124	Conesus Lake	Long Point Park	Livingston	Town of Genesee	3	N	T/B/P/O	3	Swimming; public safety office	42° 46' 50.707" N	77° 43' 16.720" W
218	Crusoe Creek	NYSDEC cartop launch Rt. 89 Bridge	Wayne	Savannah	3	N	O	3	Montezuma Audubon Cntr.	43° 5' 23.147" N	76° 45' 44.349" W
217	Crusoe Creek	Savannah Spring Lake Rd. Southwest side of bridge	Wayne	Savannah	2	N	None	2		43° 4' 25.217" N	76° 44' 34.180" W
219	Crusoe Creek										
218	Crusoe Creek										
168	Flint Creek	Waddell Rd	Ontario	Town of Phelps	1	N	None	2		42° 55' 6.190" N	77° 6' 47.509" W
169	Flint Creek	Wheat Rd	Ontario	Town of Phelps	2	N	H	3	Ontario Pathways Rail Trail	42° 56' 21.750" N	77° 5' 58.531" W
Note: For Ganargua Creek, see also Mud Creek, which is tributary near Access Point No. 155											
155	Ganargua Creek	Brace Rd	Ontario	Town of Victor	2	N	None	2		42° 58' 41.545" N	77° 23' 39.052" W
156	Ganargua Creek	Wilkinson Rd	Wayne	Town of Macedon	2	N	None	2		43° 2' 38.306" N	77° 20' 27.820" W
157	Ganargua Creek	Gravino Park	Wayne	Village of Macedon	2	N	P/O	3	Gravino Town park; active recreation	43° 4' 11.737" N	77° 17' 34.656" W
158	Ganargua Creek	Pal-Mac Aqueduct County Park - Lock 29	Wayne	Town of Macedon	3	N	T/P	3		43° 3' 50.562" N	77° 14' 55.806" W
159	Ganargua Creek	Swift Landing County Park	Wayne	Town of Palmyra	3	N	B/P/O	3	Active recreation area	43° 4' 4.994" N	77° 11' 10.288" W
160	Ganargua Creek	South Creek Rd and Vault Rd	Wayne	Town of Palmyra	1	N	None	2		43° 4' 40.901" N	77° 10' 40.663" W
161	Ganargua Creek	Mud Mills Rd	Wayne	Town of Acadia	2	N	None	2		43° 4' 33.470" N	77° 4' 40.620" W
162	Ganargua Creek	Norsen Bridge County Park	Wayne	Town of Acadia	3	N	P/O	3	Norsen Bridge Park; active recreation area	43° 5' 54.067" N	77° 3' 42.178" W

Genesee – Finger Lakes Regional Blueway Analysis

An Inventory and Analysis of Regional Blueway Opportunity Areas

Access Pt. No.	Waterbody	Description	County	Municipality	Access Pt. Ranking	ADA Compliant ?	Comp. Facilities	Parking	Comments	LatDDM	LongDDM
163	Ganargua Creek	Water St County Boat Launch	Wayne	Village of Lyons	3	N	T/B/P	3	Parking for 8 cars and trailers	43° 3' 48.326" N	77° 0' 9.630" W
120	Genesee River	Whiskey Bridge at River Rd and Rt 19a	Wyoming	Town of Genesee Falls	2	N	None	2		42° 33' 31.147" N	78° 2' 52.382" W
119	Genesee River	Rt 436 and Totsline Rd	Livingston	Town of Portage	2	N	None	2	Paddlers should not proceed any further downstream	42° 34' 19.405" N	78° 2' 26.812" W
205	Genesee River	Lee's Landing	Wyoming	Town of Genesee Falls	2	N	B/P/C/O	3	Launch point by permit only; long carry necessary	42° 35' 36.810" N	78° 0' 31.488" W
206	Genesee River	St. Helena	Wyoming	Town of Castile	2	N	B/P/C/O	3	Exit point; long carry; area subject to inundation	42° 37' 4.601" N	77° 59' 50.952" W
118	Genesee River	Main St - Brooks Island	Livingston	Village of Mt. Morris	2	N	O	2	Public property river right adjacent to Reception Center	42° 44' 15.544" N	77° 52' 47.752" W
116	Genesee River	Rt 20A and Rt 39	Livingston	Town of Geneseo	1	N	None	2		42° 46' 36.458" N	77° 50' 23.269" W
216	Genesee River	River Access Park	Livingston	Village of Geneseo	3	N	O	3	Adjacent catch and release fishing pond	42° 54' 45.234" N	77° 22' 42.285" W
115	Genesee River	York Landing Rd	Livingston	Town of York	1	N	H	3	Parking at the Genesee Valley Greenway trailhead	42° 51' 52.024" N	77° 51' 4.331" W
114	Genesee River	Genesee River State Fishing Access Site - Rt 5	Livingston	Village of Avon	2	N	None	3	Parking for 6 cars	42° 55' 3.140" N	77° 45' 22.838" W

Genesee – Finger Lakes Regional Blueway Analysis

An Inventory and Analysis of Regional Blueway Opportunity Areas

Access Pt. No.	Waterbody	Description	County	Municipality	Access Pt. Ranking	ADA Compliant ?	Comp. Facilities	Parking	Comments	LatDDM	LongDDM
112	Genesee River	Genesee River State Fishing Access Site - Rt 251	Monroe	Town of Rush	3	N	None	3	Parking for 7 cars	43° 0' 17.039" N	77° 43' 47.723" W
111	Genesee River	Genesee River State Fishing Access Site - Rt 253	Monroe	Town of Wheatland	2	N	None	3	Parking for 12 cars	43° 1' 48.032" N	77° 43' 27.865" W
110	Genesee River	Genesee Valley Park at Red Creek	Monroe	City of Rochester	2	N	H	3		43° 7' 7.846" N	77° 38' 21.728" W
109	Genesee River	Genesee Waterways Cntr	Monroe	City of Rochester	4	Y	B/P/H/O	3	Genesee Waterways Cntr; rentals and lessons avail	43° 7' 21.457" N	77° 38' 12.343" W
108	Genesee River	Brooks Landing Dock	Monroe	City of Rochester	3	N	O	3	Brooks Landing, Rochester, NY	43° 7' 49.076" N	77° 38' 6.954" W
107	Genesee River	Univ. of Rochester Dock - Wilson Blvd	Monroe	City of Rochester	3	N	H	2		43° 7' 52.752" N	77° 37' 55.448" W
106	Genesee River	Corn Hill Landing	Monroe	City of Rochester	4	Y	B/P/H/O	3	Corn Hill Landing, Rochester, NY	43° 8' 51.565" N	77° 36' 42.498" W
199	Genesee River	Seth Green Island Fishing Access - Roc Kayak Park	Monroe	City of Rochester	2	N	None	3	Long carry to water; haz. cond. due to hydro fac.	43° 11' 14.400" N	77° 37' 24.900" W
57a	Genesee River	Turning Point Park	Monroe	City of Rochester	2	N	H	3		43° 13' 38.968" N	77° 37' 4.260" W
57b	Genesee River	Turning Point Park	Monroe	City of Rochester	2	N	H	3		43° 13' 48.464" N	77° 37' 0.296" W
55	Genesee River	Ontario Beach Park Public Boat Launch	Monroe	City of Rochester	4	N	T/B/P/H/O	3	Parking for 40 cars and trailers; many amenities	43° 15' 15.350" N	77° 36' 33.905" W
136a	Hemlock Lake	Hemlock Lake hard surface ramp	Livingston	Town of Livonia	3	N	T	3	Permit required; paddle/<10 horsepower boats only	42° 45' 47.905" N	77° 36' 41.375" W

Genesee – Finger Lakes Regional Blueway Analysis

An Inventory and Analysis of Regional Blueway Opportunity Areas

Access Pt. No.	Waterbody	Description	County	Municipality	Access Pt. Ranking	ADA Compliant ?	Comp. Facilities	Parking	Comments	LatDDM	LongDDM
136b	Hemlock Lake	Hemlock Lake hard surface ramp	Ontario	Town of Canadice	3	N	T	3	Permit required; paddle/<10 horsepower boats only	42° 40' 32.336" N	77° 35' 30.948" W
132	Honeoye Creek	Honeoye Creek SWMA - Shetler Rd	Ontario	Town of Richmond	2	N	None	3		42° 49' 35.515" N	77° 31' 57.436" W
131	Honeoye Creek	Belcher Rd	Ontario	Town of Richmond	2	N	None	3		42° 50' 14.024" N	77° 32' 11.026" W
130	Honeoye Creek	Pond Rd	Livingston	Town of Lima	1	N	None	1		42° 51' 51.239" N	77° 33' 15.109" W
129	Honeoye Creek	Factory Hollow Rd	Ontario	Town of West Bloomfield	2	N	None	1		42° 53' 59.946" N	77° 33' 30.125" W
128	Honeoye Creek	Monroe Street Village Park	Monroe	Town of Mendon	1	N	P/C/O	3	Monroe Street Village Park; camping w/permit	42° 57' 46.541" N	77° 36' 35.834" W
207	Honeoye Creek	Sibley Rd	Monroe	Town of Mendon	1	N	None	1		42° 58' 1.295" N	77° 36' 49.244" W
127	Honeoye Creek	Town of Rush Veterans Memorial Park	Monroe	Town of Rush	2	N	P/H/O	3	Town of Rush commercial district nearby	42° 59' 31.834" N	77° 38' 41.312" W
113	Honeoye Creek	Honeoye Creek State Fishing Access Site	Monroe	Town of Rush	2	N	H	3	Parking for 12 cars	42° 59' 24.601" N	77° 40' 46.049" W
126	Honeoye Creek	Golah Rd Substation	Monroe	Town of Rush	2	N	None	2		42° 58' 14.272" N	77° 42' 57.535" W
133	Honeoye Lake	Sandy Bottom Town Park	Ontario	Town of Richmond	3	N	T/B/P/O	3	Sandy Bottom Park; beach access; 30 spaces	42° 47' 2.350" N	77° 30' 52.938" W
134	Honeoye Lake	Honeoye Lake State Boat Launch	Ontario	Town of South Bristol	4	Y	T/B	3	Parking for 30 cars	42° 43' 32.362" N	77° 30' 27.335" W
Note: For Irondequoit Creek, see also Lake Ontario Access Pt. No's 59, 60, 61, & 65, which are each associated with Irondequoit Bay											
63	Irondequoit Creek	Linear Town Park	Monroe	Town of Penfield	2	N	B/P/H/O	3	Active recreation	43° 7' 37.978" N	77° 29' 4.466" W
64	Irondequoit Creek	Irondequoit Creek Plaza	Monroe	Town of Penfield	2	N	None	3		43° 7' 57.261" N	77° 29' 53.788" W

Genesee – Finger Lakes Regional Blueway Analysis

An Inventory and Analysis of Regional Blueway Opportunity Areas

Access Pt. No.	Waterbody	Description	County	Municipality	Access Pt. Ranking	ADA Compliant ?	Comp. Facilities	Parking	Comments	LatDDM	LongDDM
62a	Irondequoit Creek	Ellison County Park	Monroe	Town of Penfield	2	N	B/P/H/O	3	Active recreation	43° 8' 54.877" N	77° 30' 58.284" W
62b	Irondequoit Creek	Ellison County Park	Monroe	Town of Penfield	2	N	B/P/H/O	3	Active recreation	43° 8' 57.984" N	77° 30' 47.246" W
13	Johnson Creek	Marshall Rd	Orleans	Town of Yates	1	N	None	1		43° 18' 22.781" N	78° 25' 5.466" W
12	Johnson Creek	Angling Rd	Orleans	Town of Yates	1	N	None	1		43° 18' 21.848" N	78° 24' 27.806" W
18	Johnson Creek	Lyndonville Overlook	Orleans	Village of Lyndonville	2	N	P/O	2	Historic Lyndonville Main St. commercial dist.	43° 19' 19.762" N	78° 23' 19.993" W
17	Johnson Creek	Blood Road	Orleans	Town of Yates	1	N	None	1	Limited access on the SE side of the bridge	43° 20' 7.291" N	78° 21' 31.502" W
22	Johnson Creek	Yates Carlton Townline Road	Orleans	Town of Yates	1	N	None	1	Limited access on either side of the bridge	43° 20' 43.085" N	78° 18' 34.073" W
24	Johnson Creek	Harris Rd	Orleans	Town of Carlton	1	N	None	1		43° 21' 12.992" N	78° 16' 48.997" W
25	Johnson Creek	Kuckville	Orleans	Town of Carlton	2	N	O	2	Nearby convenience store w/tackle shop	43° 21' 39.071" N	78° 15' 52.956" W
179	Keuka Lake	Guyanoga Creek State Fishing Access Site	Yates	Town of Jerusalem	3	N	T/P	3	Parking for 6 cars and trailers	42° 35' 59.561" N	77° 8' 58.175" W
178a	Keuka Lake	Keuka Lake State Park	Yates	Town of Jerusalem	4	Y	T/B/P/C	3	Parking for 50 cars and trailers	42° 34' 57.140" N	77° 8' 10.129" W
178b	Keuka Lake	Keuka Lake State Park	Yates	Town of Jerusalem	3	N	T/B/P/C	3	Parking for 50 cars and trailers	42° 34' 54.674" N	77° 8' 10.399" W
177	Keuka Lake	Keuka College Beach Access	Yates	Town of Jerusalem	3	N	P	2		42° 36' 54.742" N	77° 5' 15.608" W
175	Keuka Lake	Indian Pines Park	Yates	Village of Penn Yan	3	N	B/P/O	3	Indian Pines Park; swimming area, active	42° 39' 7.430" N	77° 3' 52.531" W

Genesee – Finger Lakes Regional Blueway Analysis

An Inventory and Analysis of Regional Blueway Opportunity Areas

Access Pt. No.	Waterbody	Description	County	Municipality	Access Pt. Ranking	ADA Compliant ?	Comp. Facilities	Parking	Comments	LatDDM	LongDDM
									rec.		
176	Keuka Lake Outlet	Penn Yan Village Park	Yates	Village of Penn Yan	4	Y	T/B/P	3		42° 39' 26.550" N	77° 3' 32.076" W
180a	Keuka Lake Outlet	Keuka Outlet Trail	Yates	Village of Penn Yan	2	N	H	2	Keuka Outlet Trail	42° 39' 38.570" N	77° 2' 43.998" W
180b	Keuka Lake Outlet	Keuka Outlet Trail	Yates	Village of Penn Yan	2	N	H	2	Keuka Outlet Trail	42° 39' 39.679" N	77° 2' 48.682" W
181	Keuka Lake Outlet	Outlet Park	Yates	Town of Milo	2	N	H	3	Keuka Outlet Trail	42° 39' 51.462" N	77° 0' 9.068" W
182	Keuka Lake Outlet	Kings Hill Rd	Yates	Town of Torrey	2	N	None	2		42° 40' 49.091" N	76° 57' 12.406" W
14	Lake Ontario	Golden Hill State Park Boat Launch	Niagara	Town of Somerset	4	Y	T/B/P/C/H	3		43° 22' 14.171" N	78° 28' 27.592" W
15	Lake Ontario	Shadigee	Orleans	Town of Yates	2	N	None	3		43° 22' 31.523" N	78° 23' 19.151" W
16	Lake Ontario	Yates Town Park	Orleans	Town of Yates	3	N	P	3	Beach access	43° 22' 22.728" N	78° 20' 21.658" W
23	Lake Ontario	Green Harbor Campground	Orleans	Town of Carlton	1	N	T/B/P/C/O	3	Private Campground/ Marina - excellent beach access	43° 22' 17.922" N	78° 18' 13.205" W
34	Lake Ontario	Troutberg	Orleans	Town of Kendall	1	N	None	2		43° 21' 54.094" N	77° 59' 44.387" W
35	Lake Ontario	Hamlin Beach State Park Cartop Launch	Monroe	Town of Hamlin	3	N	B/P/C/H/O	3	Parking for 3 cars directly at cartop launch	43° 21' 40.432" N	77° 56' 26.858" W
44	Lake Ontario	Lake Ontario State Parkway	Monroe	Town of Hamlin	2	N	None	2		43° 20' 40.765" N	77° 50' 10.853" W
45	Lake Ontario	Braddock Bay State Fish and WMA	Monroe	Town of Greece	3	N	None	2		43° 17' 10.086" N	77° 42' 18.479" W
46	Lake Ontario	Braddock Bay State Fish and WMA	Monroe	Town of Greece	3	N	None	2		43° 18' 52.085" N	77° 43' 39.263" W
47	Lake Ontario	Braddock Bay Town Park	Monroe	Town of Greece	4	Y	T/P	3		43° 18' 21.748" N	77° 42' 28.631" W
48	Lake Ontario	Cranberry Pond	Monroe	Town of Greece	3	N	None	3		43° 18' 19.782" N	77° 41' 52.091" W
49	Lake Ontario	Goodwin Town Park	Monroe	Town of Greece	3	N	None	3		43° 17' 26.448" N	77° 40' 28.265" W

Genesee – Finger Lakes Regional Blueway Analysis

An Inventory and Analysis of Regional Blueway Opportunity Areas

Access Pt. No.	Waterbody	Description	County	Municipality	Access Pt. Ranking	ADA Compliant ?	Comp. Facilities	Parking	Comments	LatDDM	LongDDM
50	Lake Ontario	Buck Pond	Monroe	Town of Greece	3	N	None	3		43° 16' 46.204" N	77° 39' 19.663" W
51	Lake Ontario	Shoremont WWTP	Monroe	Town of Greece	1	N	P	1	Private property Kodak/Shoremont Association	43° 16' 30.274" N	77° 38' 25.040" W
56	Lake Ontario	Russel Station Power Plant	Monroe	Town of Greece	2	N	None	3	Parking for 80 cars	43° 16' 8.116" N	77° 37' 35.641" W
58	Lake Ontario	Durand Eastman Beach	Monroe	City of Rochester	3	N	B/P/H/O	3	Public swimming area	43° 14' 27.672" N	77° 34' 21.918" W
59	Lake Ontario	Irondequoit Bay State Marine Park	Monroe	Town of Irondequoit	4	Y	B	3	Parking for 28 cars and trailers	43° 14' 5.021" N	77° 32' 5.320" W
60	Lake Ontario	Empire Blvd Rest Area - Irondequoit Bay	Monroe	Town of Penfield	3	N	None	3		43° 10' 30.443" N	77° 31' 13.883" W
61	Lake Ontario	LaSalle's Landing Town Park	Monroe	Town of Penfield	3	N	P	3		43° 10' 34.561" N	77° 31' 32.581" W
65	Lake Ontario	Town of Webster Sandbar Park - Irondequoit Bay	Monroe	Town of Webster	3	N	P	1		43° 14' 17.311" N	77° 31' 14.063" W
66	Lake Ontario	Mill Creek	Monroe	Town of Webster	3	N	B/P/C/H/O	3	Active recreation	43° 15' 37.112" N	77° 27' 4.957" W
67	Lake Ontario	Town of Ontario Boat Launch	Wayne	Town of Ontario	4	Y	T/P	3	Non-residents require permit from Town Hall	43° 16' 36.080" N	77° 16' 31.955" W
68	Lake Ontario	B. Forman County Park	Wayne	Town of Williamson	3	N	B/P/O	3	Active recreation; camping by permit	43° 16' 52.050" N	77° 10' 8.965" W
69	Lake Ontario	Maxwell Bay State Fishing Access Site	Wayne	Town of Sodus	2	N	None	3		43° 16' 0.476" N	77° 1' 26.548" W
70	Lake Ontario	Sodus Point Beach County Park	Wayne	Village of Sodus Point	3	N	T/B/P/O	3	Public swimming	43° 16' 25.741" N	76° 58' 28.945" W
71	Lake Ontario	Sodus Bay State Boat Launch	Wayne	Village of Sodus Point	3	N	T/P	3		43° 16' 9.768" N	76° 58' 44.717" W
72	Lake Ontario	Shaker Tract Rd - Sodus Bay	Wayne	Town of Huron	2	N	None	2		43° 14' 12.559" N	76° 57' 27.662" W
73	Lake Ontario	Lake Shore Marshes SWMA - East Bay Rd	Wayne	Town of Huron	3	N	B	2		43° 17' 25.843" N	76° 54' 23.645" W
74	Lake Ontario	Lake Shore Marshes SWMA - Garner Rd	Wayne	Town of Huron	3	N	None	3		43° 16' 35.476" N	76° 54' 21.640" W

Genesee – Finger Lakes Regional Blueway Analysis

An Inventory and Analysis of Regional Blueway Opportunity Areas

Access Pt. No.	Waterbody	Description	County	Municipality	Access Pt. Ranking	ADA Compliant ?	Comp. Facilities	Parking	Comments	LatDDM	LongDDM
75	Lake Ontario	Lake Shore Marshes SWMA - Slaght Rd Boat Launch	Wayne	Town of Huron	3	N	None	3		43° 16' 22.480" N	76° 54' 8.831" W
171	Lake Ontario	Lake Shore Marshes WMA - Red Creek Unit	Wayne	Town of Wolcott	2	N	O	3	Designated car top launch area	43° 17' 57.455" N	76° 46' 50.135" W
172	Lake Ontario	Lake Shore Marshes WMA - Larkin Rd	Wayne	Town of Wolcott	3	N	None	1		43° 18' 9.698" N	76° 47' 30.984" W
173	Lake Ontario	Port Bay South State Fishing Access Site	Wayne	Town of Wolcott	4	Y	T	3	Parking for 28 cars and trailers	43° 16' 44.011" N	76° 49' 42.017" W
174	Lake Ontario	Port Bay West State Fishing Access Site	Wayne	Town of Wolcott	4	Y	T	3	Parking for 35 cars and trailers	43° 18' 14.778" N	76° 50' 19.997" W
76a	Lake Ontario	Lake Shore Marshes SWMA - Huron Rd Boat Launch	Wayne	Town of Huron	3	N	None	2		43° 17' 28.586" N	76° 52' 58.210" W
76b	Lake Ontario	Lake Shore Marshes SWMA - Huron Rd Boat Launch	Wayne	Town of Huron	3	N	None	2		43° 17' 36.812" N	76° 53' 12.239" W
202	Lock 32 Whitewater Park	Lock 32 Whitewater Park	Monroe	Town of Pittsford	3	N	P/H/O	3	Lock 32 Whitewater Park	43° 5' 27.558" N	77° 32' 41.851" W
Note: Mud Creek is a tributary to Ganargua Creek, joining near Access Point No. 155											
215	Mud Creek	Rt. 64	Ontario	Town of East Bloomfield	1	N	None	1		42° 51' 51.790" N	77° 23' 23.058" W
214	Mud Creek	Co. Rd. 30 and Wheeler Station Rd	Ontario	Town of East Bloomfield	2	N	None	1		42° 54' 45.234" N	77° 22' 42.285" W
213	Mud Creek	Rotary Centennial Walking Path	Ontario	Town of Farmington	3	N	B/P/H	3		42° 57' 54.698" N	77° 22' 8.603" W
147	Naples Creek	Naples Creek Public Fishing Stream	Ontario	Town of Naples	2	N	None	3		42° 37' 33.247" N	77° 23' 23.248" W
52	Northrup Creek	Flynn Rd - Northrup Creek	Monroe	Town of Greece	2	N	None	2		43° 16' 55.808" N	77° 42' 53.284" W
1	Oak Orchard River	Elba Mucklands - State Rt 98	Genesee	Town of Elba	1	N	None	1		43° 7' 29.700" N	78° 11' 36.360" W
2	Oak Orchard River	Fisher Rd	Genesee	Town of Oakfield	1	N	None	1		43° 7' 26.746" N	78° 14' 53.758" W

Genesee – Finger Lakes Regional Blueway Analysis

An Inventory and Analysis of Regional Blueway Opportunity Areas

Access Pt. No.	Waterbody	Description	County	Municipality	Access Pt. Ranking	ADA Compliant ?	Comp. Facilities	Parking	Comments	LatDDM	LongDDM
3	Oak Orchard River	Oak Orchard SWMA - Albion Rd	Genesee	Town of Oakfield	2	N	H	2		43° 6' 28.760" N	78° 16' 56.489" W
4	Oak Orchard River	Iroquois NWR - Knowlesville Rd	Genesee	Town of Alabama	3	N	H	3	Parking available for 3 cars	43° 7' 14.268" N	78° 19' 29.212" W
5	Oak Orchard River	Iroquois NWR - Sour Springs Rd	Genesee	Town of Alabama	2	N	H	2		43° 7' 31.778" N	78° 22' 12.184" W
6	Oak Orchard River	Iroquois NWR - State Rt 63	Orleans	Town of Shelby	3	N	None	2		43° 8' 9.935" N	78° 23' 25.364" W
7	Oak Orchard River	Dunlop Rd	Orleans	Town of Shelby	1	N	H	1		43° 9' 32.893" N	78° 24' 29.603" W
8	Oak Orchard River	Harrison Rd	Orleans	Town of Shelby	1	N	None	1		43° 10' 27.829" N	78° 23' 11.630" W
9	Oak Orchard River	Glenwood Lake Park	Orleans	Town of Ridgeway	4	Y	T/P	3	Parking for 10 cars and trailers	43° 14' 7.505" N	78° 23' 40.218" W
10	Oak Orchard River	Slade Rd	Orleans	Town of Ridgeway	2	N	None	2	Access is over guardrail down steep unstable bank	43° 15' 0.493" N	78° 23' 41.435" W
11	Oak Orchard River	The Flats - Rt 63	Orleans	Town of Ridgeway	2	N	None	3		43° 15' 26.586" N	78° 23' 49.531" W
27	Oak Orchard River	Bates Rd	Orleans	Town of Ridgeway	1	N	None	1		43° 16' 4.246" N	78° 22' 13.494" W
28	Oak Orchard River	Oak Orchard on-the-Ridge	Orleans	Town of Ridgeway	2	N	None	1		43° 16' 27.768" N	78° 19' 55.592" W
19	Oak Orchard River	Wheelman's Rest - Knowlesville Rd	Orleans	Town of Ridgeway	3	N	None	2		43° 18' 2.880" N	78° 18' 38.220" W
20	Oak Orchard River	Lake Alice Public Boat Launch	Orleans	Town of Carlton	4	N	T	3	Parking for 8 cars and trailers	43° 19' 21.947" N	78° 15' 1.192" W
21	Oak Orchard River	Clarks Mills Rd	Orleans	Town of Carlton	1	N	None	1		43° 19' 35.119" N	78° 14' 24.518" W
29	Oak Orchard River	Oak Orchard State Fishing Access Site	Orleans	Town of Carlton	2	N	B/O	3	Access to Lake Alice and dam area; 25+ spaces	43° 19' 39.817" N	78° 14' 5.701" W
30	Oak Orchard River	Oak Orchard Fishing Access Area	Orleans	Town of Carlton	2	N	None	1	15.8 acres leased by Orleans County; steep carry	43° 20' 11.787" N	78° 14' 19.873" W
33	Oak Orchard River	The Bridges	Orleans	Town of Carlton	1	N	T/B/O	1	Private outfitting establishment	43° 21' 11.956" N	78° 11' 31.866" W

Genesee – Finger Lakes Regional Blueway Analysis

An Inventory and Analysis of Regional Blueway Opportunity Areas

Access Pt. No.	Waterbody	Description	County	Municipality	Access Pt. Ranking	ADA Compliant ?	Comp. Facilities	Parking	Comments	LatDDM	LongDDM
									s; fee launch only		
32	Oak Orchard River	Orleans County Marine Park Seasonal Docks	Orleans	Town of Carlton	3	N	B/P/O	3	County Sheriff, US Customs video phone, showers	43° 21' 45.608" N	78° 11' 27.604" W
26	Oak Orchard River	Oak Orchard State Marine Park	Orleans	Town of Carlton	4	Y	T/B/P	3	West Side; Parking for 96 cars and trailers plus 25 cars	43° 22' 8.975" N	78° 11' 35.726" W
31	Oak Orchard River	Orleans County Marine Park at Point Breeze	Orleans	Town of Carlton	4	Y	T/B/P/O	3	East side; Parking for 25 cars and trailers; other amenities	43° 22' 16.162" N	78° 11' 28.814" W
77	Oatka Creek	Buffalo Rd	Wyoming	Town of Warsaw	1	N	None	1		42° 45' 39.539" N	78° 8' 26.279" W
78	Oatka Creek	State Rt 19	Wyoming	Town of Warsaw	1	N	None	1		42° 46' 25.259" N	78° 7' 25.799" W
79	Oatka Creek	Sayre Rd	Wyoming	Town of Warsaw	1	N	None	2		42° 46' 50.639" N	78° 7' 19.200" W
80	Oatka Creek	School Rd	Wyoming	Village of Wyoming	2	N	None	2		42° 49' 8.580" N	78° 5' 11.040" W
81	Oatka Creek	Main St	Wyoming	Village of Wyoming	2	N	None	2		42° 49' 22.861" N	78° 4' 54.239" W
82	Oatka Creek	Lemly Rd	Wyoming	Town of Covington	2	N	None	2		42° 49' 42.661" N	78° 4' 18.361" W
83	Oatka Creek	State Rt 19	Wyoming	Town of Covington	2	N	None	1		42° 50' 53.819" N	78° 3' 39.121" W
84	Oatka Creek	River Rd	Genesee	Town of Pavillion	1	N	None	1		42° 52' 50.581" N	78° 1' 47.460" W
85	Oatka Creek	Cole Rd	Genesee	Town of LeRoy	1	N	None	1		42° 57' 29.459" N	78° 1' 26.281" W
86	Oatka Creek	Munson Rd Overlook	Genesee	Village of LeRoy	2	N	None	3		42° 58' 16.741" N	78° 0' 8.701" W
87	Oatka Creek	Wolcott St	Genesee	Village of LeRoy	3	N	O	2	Located near historic Main St. LeRoy	42° 58' 33.539" N	77° 59' 17.401" W
201	Oatka Creek	Oatka Trail Rd	Genesee	Town of LeRoy	2	N	None	3		43° 0' 58.920" N	77° 57' 31.680" W

Genesee – Finger Lakes Regional Blueway Analysis

An Inventory and Analysis of Regional Blueway Opportunity Areas

Access Pt. No.	Waterbody	Description	County	Municipality	Access Pt. Ranking	ADA Compliant ?	Comp. Facilities	Parking	Comments	LatDDM	LongDDM
98	Oatka Creek	Oatka Creek State Fishing Access Site	Monroe	Town of Wheatland	3	N	O	3	Designated car top launch; 6 parking spaces	42° 59' 45.989" N	77° 51' 43.657" W
97	Oatka Creek	Oatka Creek Park County Fishing Access Site	Monroe	Town of Wheatland	2	N	H	3	Ideal fishing access; no boat access present	43° 0' 41.317" N	77° 47' 33.166" W
96	Oatka Creek	Canawaugus Park	Monroe	Town of Wheatland	3	N	P/H	3	Historic Village of Scottsville nearby	43° 1' 6.053" N	77° 44' 52.120" W
37	Salmon Creek	Hilton Village Park	Monroe	Village of Hilton	3	N	H/O	3	Village Park; Jennejahn Lodge available for rental	43° 17' 3.304" N	77° 48' 4.324" W
54	Salmon Creek	Braddock Bay SWMA - Salmon Creek at Hogan Rd	Monroe	Town of Greece	2	N	T	3		43° 18' 45.202" N	77° 43' 54.149" W
41	Sandy Creek	Creek Rd	Orleans	Town of Kendall	2	N	None	2		43° 17' 14.932" N	78° 2' 30.944" W
38	Sandy Creek	Redman Rd	Monroe	Town of Hamlin	1	N	None	2	Parking on the corner of Roosevelt Hgwy & Redman	43° 17' 44.111" N	77° 57' 56.130" W
39	Sandy Creek	State Rt 18	Monroe	Town of Hamlin	1	N	None	2	Parking on the corner of Roosevelt Hgwy & Redman	43° 17' 46.608" N	77° 57' 49.824" W
40	Sandy Creek	Brick Schoolhouse Rd	Monroe	Town of Hamlin	1	N	None	1		43° 18' 48.971" N	77° 57' 17.132" W
42	Sandy Creek	Town of Hamlin Park	Monroe	Town of Hamlin	3	N	B/P/O	3	Public park with active recreation	43° 18' 51.246" N	77° 56' 40.175" W
43	Sandy Creek	Lake Rd	Monroe	Town of Hamlin	1	N	None	1		43° 20' 6.310" N	77° 55' 40.379" W
36	Sandy Creek	Sandy Creek State Fishing Access Site	Monroe	Town of Hamlin	4	Y	T/B	3	Parking for 50 cars and	43° 20' 57.779" N	77° 53' 33.540" W

Genesee – Finger Lakes Regional Blueway Analysis

An Inventory and Analysis of Regional Blueway Opportunity Areas

Access Pt. No.	Waterbody	Description	County	Municipality	Access Pt. Ranking	ADA Compliant ?	Comp. Facilities	Parking	Comments	LatDDM	LongDDM
									trailers		
187a	Seneca Cayuga Canal	Seneca Lake State Boat Launch	Seneca	Town of Waterloo	4	Y	T/B/P	3	Parking for 30 cars and trailers	42° 52' 19.427" N	76° 56' 32.615" W
187b	Seneca Cayuga Canal	Seneca Lake State Boat Launch and Marina	Seneca	Town of Waterloo	3	N	B/P	3	Parking for 30 cars and trailers	42° 52' 11.651" N	76° 56' 21.750" W
203	Seneca Cayuga Canal	Oak Island	Seneca	Village of Waterloo	4	Y	T/B/P	3	Parking for 5 cars and trailers	42° 54' 5.526" N	76° 51' 58.547" W
196a	Seneca Cayuga Canal	Seneca Falls Canal Harbor	Seneca	Village of Seneca Falls	4	Y	B/P/O	2	Adjacent to historic Main St. Seneca Falls	42° 54' 35.294" N	76° 47' 48.142" W
196b	Seneca Cayuga Canal	Seneca Falls - Trinity Church	Seneca	Village of Seneca Falls	3	N	O	2	Adjacent to historic Main St. Seneca Falls	42° 54' 38.164" N	76° 47' 39.340" W
197	Seneca Cayuga Canal	Seneca Cayuga Canal Lock No. 2	Seneca	Village of Seneca Falls	3	N	None	3		42° 54' 51.502" N	76° 47' 16.343" W
194	Seneca Cayuga Canal	Demont Rd	Seneca	Town of Seneca Falls	2	N	None	1		42° 56' 22.308" N	76° 45' 29.002" W
185a	Seneca Lake	Lakefront Park	Ontario	City of Geneva	4	Y	B/P/H	3	Parking for 20 cars and trailers	42° 52' 10.319" N	76° 58' 39.050" W
185b	Seneca Lake	Lakefront Park	Ontario	City of Geneva	3	N	B/P/H	3		42° 52' 13.717" N	76° 58' 33.852" W
186	Seneca Lake	Seneca Lake State Park	Ontario	Town of Waterloo	3	N	B/P/O	3	Swimming, spray park and active recreation	42° 52' 20.723" N	76° 56' 41.449" W
188	Seneca Lake	Sampson State Park	Seneca	Town of Romulus	4	Y	T/B/P/C	3	Parking for 64 cars and trailers	42° 43' 30.659" N	76° 54' 46.145" W
189	Seneca Lake	Lodi Point State Park	Seneca	Town of Lodi	4	N	T/B/P	3	Parking for 68 cars and trailers	42° 37' 4.976" N	76° 52' 37.164" W
184	Seneca Lake	Seneca Lake State Fishing Access Site	Yates	Town of Milo	4	Y	T/B	3	Parking for 30 cars and trailers	42° 35' 5.777" N	76° 55' 0.768" W
183	Seneca Lake	East Leach Rd	Yates	Town of	3	N	None	1		42° 38'	76° 55'

Genesee – Finger Lakes Regional Blueway Analysis

An Inventory and Analysis of Regional Blueway Opportunity Areas

Access Pt. No.	Waterbody	Description	County	Municipality	Access Pt. Ranking	ADA Compliant ?	Comp. Facilities	Parking	Comments	LatDDM	LongDDM
				Torrey						15.562" N	7.903" W
195	Seneca River	Seneca River State Fishing Access Site	Seneca	Town of Tyre	4	N	T	3		42° 57' 43.510" N	76° 44' 19.705" W
198	Silver Lake	Silver Lake State Park	Wyoming	Town of Castile	4	Y	T/B/P	3	Parking for 40 cars and trailers	42° 40' 55.800" N	78° 2' 59.700" W
204	Tonawanda Creek	Rt 20A Varrysburg	Wyoming	Town of Sheldon	1	N	None	1		42° 45' 48.086" N	78° 18' 51.761" W
200	Tonawanda Creek	Genesee St	Genesee	Town of Alexander	2	N	None	2		42° 52' 35.640" N	78° 15' 28.080" W
105	Tonawanda Creek	Kibbe Park	Genesee	City of Batavia	2	N	P	3		42° 59' 9.287" N	78° 11' 11.872" W
104	Tonawanda Creek	Main St	Genesee	City of Batavia	2	N	O	2	Route 5 Batavia commercial district	43° 0' 13.921" N	78° 12' 3.179" W
103	Tonawanda Creek	Kiwanis Park	Genesee	Town of Batavia	2	N	O	3	Kiwanas Park	43° 0' 21.546" N	78° 13' 43.975" W
102	Tonawanda Creek	Slusser Rd	Genesee	Town of Pembroke	3	N	None	2		42° 59' 56.904" N	78° 18' 37.274" W
101	Tonawanda Creek	North Pembroke Rd	Genesee	Town of Pembroke	1	N	None	1		43° 1' 12.760" N	78° 20' 9.924" W
100	Tonawanda Creek	Indian Falls - Phelps Rd	Genesee	Town of Pembroke	2	N	None	2		43° 1' 38.582" N	78° 23' 47.929" W
99	Tonawanda Creek	St. Rt 93	Niagara	Town of Royalton	1	N	None	1		43° 5' 26.045" N	78° 31' 7.957" W
149	West River	High Tor State WMA West River Unit Cartop Launch	Yates	Town of Italy	3	N	O	3	Designated car top launch	42° 39' 22.648" N	77° 19' 52.532" W
148	West River	High Tor State WMA West River Unit Trailer Launch	Yates	Town of Italy	3	N	None	3		42° 39' 5.054" N	77° 20' 25.123" W

Genesee – Finger Lakes Regional Blueway Analysis

An Inventory and Analysis of Regional Blueway Opportunity Areas

APPENDIX F: SUMMARY OF PUBLIC COMMENTS ON THE DRAFT REPORT FOR THE PERIOD JUNE 1, 2010 TO JUNE 24, 2010

Public Meeting

A public meeting on the subject was advertised via direct print and email correspondence to approximately 350 recipients as well as through local media outlets.

Date: June 16, 2010

Duration: 7:00 – 9:00

Location: Genesee Waterways Center, Genesee Valley Park, Rochester, NY

In Attendance:

Staff:

Brian Slack, Senior Planner, G/FLRPC

David Zorn, Executive Director, G/FLRPC

Attendees:

Chris Whittaker

Jerry Koehler

Charlie Helman

Rich Anderson

Matt Meeman

Dr. Allen Kerkeslager

Shery Grugel

Harvey Botzman

Heather Adams

Will Greene

Michael Warren Thomas

John Curran

Teresa Carroll

Jon Schull

Meeting Summary

Brian Slack began the meeting with an hour-long power point presentation on the project. His presentation summarized the blueway concept, the purpose and goals of the project, and the contents of the draft report. After the presentation, Brian noted that the report is open to public comment until June 24th. He encouraged attendees with detailed comments to submit them to him in writing (those comments have been attached to this summary as an addendum). He then opened the floor for comments from attendees. Those comments are summarized below.

Genesee – Finger Lakes Regional Blueway Analysis

An Inventory and Analysis of Regional Blueway Opportunity Areas

Charlie Helman spoke with Brian in advance of the presentation and provided him with two additional launch sites that were not identified in the report: the southern end of Hemlock Lake and an official launch site on the Genesee River in the Town of Geneseo near Court Street.

Mr. Botzman noted the importance of informing elected officials of the blueway concept and this project. He further elaborated on the possibility of presenting the final report to congressional representatives in conjunction with other supportive materials. In doing so, it would facilitate knowledge transfer and greatly increase the possibility of getting more attention paid to the concept and, more importantly, to local project implementation.

Rich Anderson, Councilman from the Town of Rush asked if there was any literature that might provide insight on the construction of launch facilities. Brian noted that the report references an excellent guidebook published by the US Parks Service, *Logical, Lasting Launches*. He further noted that every water body is unique and offers its own set of environmental challenges due to issues such as soil, flooding frequency, water volume, etc. There are a wide variety of structural approaches that can be applied, but in the end, he emphasized the importance of constructing facilities that are suitable (and customized) for the conditions at the site.

An attendee inquired as to how looming state shutdowns of public facilities might affect the report or simply public access in general. Brian concurred that this will be an ongoing situation that occurred in Orleans County at one of the Lake Ontario boat launches as an example; the county legislature has agreed to manage the state boat launch at Pt. Breeze over the course of the summer in order to ensure that the public continues to have water access at this location. \

An attendee inquired as to the importance of vegetation at launch sites. Brian noted that it wasn't his area of expertise. He did comment, however, on the importance of vegetation in preventing bank erosion. Bank erosion can be problematic from a safety and aesthetic perspective, but he emphasized that its also an important water quality concern. An area that is receiving heavy traffic from boat launching can take a lot of abuse. No type of vegetation is going to be able to stand up to heavy traffic. In those situations, structural solutions may be the best option for communities.

The same attendee noted as a follow-up that the possibility of cultural interpretation posed a big opportunity, particularly the history of the Underground Railroad in the region. Brian agreed. He noted the historic marker at Access Pt. No. 153 which notes how the Ganargua Creek served as a “gateway to freedom” providing safe passage through the region to Lake Ontario and onward to Canada.

Dr. Kerkeslager mentioned that the report could perhaps use some descriptive element – probably one or more maps – that illustrates how these local corridors “connect to the bigger picture.” Examples that he provided included: other major waterways in the North East (Chenango,

Genesee – Finger Lakes Regional Blueway Analysis

An Inventory and Analysis of Regional Blueway Opportunity Areas

Susquehanna): other major watersheds: and other major recreational trail corridors. Brian noted that he was already working on including such a map or series of map in the final report.

An attendee noted the possibility of utilizing digital online media (such as Wikipedia) in an effort to promote these concepts. Brian noted that he was very interested in exploring those possibilities.

Jerry Koehler of Finger Lakes Ontario Watershed Paddlers Club noted the distinction of whitewater opportunities and how they differ from flat water opportunities. He emphasized the many whitewater opportunities present in our region.

Jon Schull complimented G/FLRPC's efforts but offered an observation. He noted that G/FLRPC may have taken the benefits of the concept for granted to a certain extent. He explained that while many individuals present at this meeting were well-aware of the opportunities that blueways present to communities, that notion is not necessarily emphasized in the draft report. To that end, the report may benefit from additional narrative that helps people understand how the blueway framework links to many of the other issues such as development, community and economic development, trail development, open space development, and other quality of life and public commons issues. Brian agreed.

In addition, another attendee offered a comment regarding how the inherent connection between outdoor recreation, tourism promotion and economic/entrepreneurial development can or should be made. How does this project address those issues. Brian noted that the report does give direct mention of those issues, but in the end he must defer those responsibilities to other existing entities, such as county IDAs and Tourism Promotion Agencies. To that extent, G/FLRPC will use its traditional avenues to disseminate information on this report and the issue in general to those entities.

Sherry Grugel, Director of the Allegany County Chamber of Commerce, noted that she intends to do exactly that and utilize the information contained in the report in an effort to better-inform county officials and business owners of the importance of planning for an improving recreational and open space resources in the county.

A question was asked as to whether other countries have embraced the concept and, if so, are there any lessons to learn from them to apply locally. Brian noted that his research focused mainly on blueway planning efforts in North America. The best example that he found was the State of Florida.

Chris Whittaker offered Brian some minor revisions to several maps.

A variety of other side-conversations related to these subjects were discussed by attendees throughout the evening.

Genesee – Finger Lakes Regional Blueway Analysis

An Inventory and Analysis of Regional Blueway Opportunity Areas

The meeting adjourned at 8:55.

Other Public Comments Submitted During the Comment Period (June 1 – June 24th, 2010).

Submitted by email June 10, 2010 by Laura Arney, Project Advisory Committee Member, in addition to comments provided earlier during the Advisory Committee review period:

page24-you might add at the last sentence that your scope of your report does not start analysis south of Livingston Co or Due to the scope of your report you do not begin analysis until the river enters Livingston Co. Something like that.

Pg 25 Due to these hazards, river access is allowed by "permit only" through certain sections of the Genesee River within the park

Excellent explanation of the hazards and limits within the Park. Very understandable. Good analysis. Great details. Hope you are really pleased with the outcome.
I enjoyed working with you.
Laura E. Arney

Submitted by email June 11, 2010 by David Drake, Chairperson of the Oak Orchard Watershed Protection Alliance.

Brian-

I am very impressed- there is a lot of material and a functional plan.

As supportive additions, I would include a mention of OOWPA, OC S&W and the State of the Basin Report.

The Northern Forest Canoe Trail deserves a mention- connecting us to a bigger picture.

Keep up the good work,

Dave

David Drake

Chairman

Oak Orchard Water Protection Alliance

Phone conversation from June 15th, 2010 between Mr. Brett DeRoo, Wayne County Department of Planning [conversation addressed the omission of Crusoe Creek in the Montezuma Complex. Follow-up email is posted below]

Genesee – Finger Lakes Regional Blueway Analysis

An Inventory and Analysis of Regional Blueway Opportunity Areas

Hello Brian.

I have attached a link to the Montezuma Audubon Center. Frank Moses' e-mail address can be found at the bottom of the page. I'll work on a DEC contact.

Thanks for your help.

Bret

http://ny.audubon.org/CentersEdu_Montezuma.html

Submitted by email June 16, 2010 by George Squires, District Manager, Genesee County SWCD

Hi Brian,

On the Black Creek map in the upper left corner - you may want to delete the "City of Batavia" label in Orleans County just south of Clarendon. It may confuse someone.

George

Submitted by email June 23, 2010 by Dr. Allen Kerkeslager, Trails Advocate/Rochester to Williamsport Greenway.

Hi Brian,

A few minor comments that you may want to address in the final version that I did not mention in the meeting:

(1) In your draft you mention the issue of signage, but this may merit at least an extra paragraph or so and perhaps even some of examples of images that illustrate or emphasize this. This cannot be emphasized enough, because perhaps the most dramatic need in NY is for signs to market and identify canoe/kayak launches and other recreational infrastructure associated with natural resources. This problem is not so obvious in the deluge of signs around Rochester, but it is one of the greatest failures of NY (especially western NY, outside the area of attention lavished on the Adirondacks). The problem becomes more evident when one crosses into PA, where every state forest, state game lands, and state recreational area is lavished with signs to market and direct people from outside the area. It is even more obvious when one travels to other states or to areas that understand the importance of an aggressive sign campaign. In contrast to these areas, one can drive for miles along interstates and state highways in NY without any signs catching one's attention to market the nearby natural resources or direct the

Genesee – Finger Lakes Regional Blueway Analysis

An Inventory and Analysis of Regional Blueway Opportunity Areas

unfamiliar to them. Addressing this problem has been one of our major concerns in Allegany County, where one can drive along I-86 within sight of thousands of acres of state forests and a major trail system without ever seeing a single sign alerting one to this. None of the canoe/kayak launches frequently used along the Genesee River there are marked (although we hope to change this soon). But a paucity of signs seems endemic to other recreational resources in NY. Officials in both NYSDEC and NYSOPRHP have shrugged at this when I have discussed it with them. They comment that each agency has its website, as if this was sufficient. A website is great for those who already know what they are looking for, but confidence in a website is a remarkably unilateral approach to marketing, especially when one's product is geographic and not transmittable by mail. A website or guide book also does not resolve the need for directions and markers even for those who know what they seek (e.g., on a recent paddle trip on the Genesee River, a directionally-challenged individual from Buffalo who was driving the boat trailer to pick up canoes and kayaks at Whiskey Bridge could have benefited from signs there, since the area looks quite different from the perspective of the outsider who has never been there before). Another reason for a more aggressive approach to signage is that it must be assumed that signs will be lost, stolen, or obscured by new vegetation. In fact, an official in the OPRHP told me that one reason DEC state lands and access points are so poorly marked is that so many of those lovely DEC signs get stolen. From many conversations about this issue with both DEC officials and OPRHP officials I know that it is difficult for them to see the problem, so I can only say that enough trips to other areas where signage is pursued much more aggressively demonstrates why their ambivalence is costly. NY is losing huge amounts of tourism revenue because of this and, unfortunately, it is an uphill battle to provoke officials even in the state tourism office in Albany to arouse themselves from their malaise on this issue. It is a huge mistake to assume that a successful blueway system can be built from a few guide books or overloaded websites on where to find canoe/kayak launches and blueways. Try building it on signs, which will attract more people to search out the books and websites for additional information. This is not even to mention the mistakes and outdated info. that one finds in books and websites--which is a real pain to discover after missing the turn that was not marked by a sign, especially if the missed point is on a river and one is in a boat that cannot take one back upstream.

(2) Major problem encountered hiking on the Genesee Valley Greenway that also applies to many blueways: No camping areas or rain shelters (picnic pavilions or Appalachian Trail-style hiking shelters). Try finding a place to camp or escape a thunderstorm when the corridor of land is so narrow that one is in danger of being stepped on or run over if one tries to stay off the posted land on both sides, as it is on the Genesee Valley Greenway and in some stretches of land along the edges of rivers and streams. Multi-day trips on Pine Creek or the massive Susquehanna River Trail are possible because of the attention to riverside camping areas and public lands that can be used for such purposes. (This again brings up the signage issue. Alerting people to these areas is still dependent on signs. As anyone knows who has

Genesee – Finger Lakes Regional Blueway Analysis

An Inventory and Analysis of Regional Blueway Opportunity Areas

paddled one of these systems in PA, even in these developed systems it is difficult to keep signs posted along the river from becoming overgrown with vegetation and thereby causing boaters to miss an access point, which may seem quite obvious from land but invisible from a boat in the main channel).

(3) On a minor note, one particular point that I often heard others mention is the potential for making a large and truly significant recreational area with better canoe/kayak access at Whiskey Bridge. This may merit a raised profile in your system of "nodes," because it is an intersection of the Genesee River with the Finger Lakes Trail and the Genesee Valley Greenway. It also offers much more room for development as a recreational site with a large launch area and parking lot than does the site downstream in Portageville, which may make it more attractive for many people as the last major exit from the Genesee River before the upper falls in Letchworth. It really does seem as if the potential of Whiskey Bridge is unexploited.

(4) Even more minor, since it only involves a typo: You may want to do a find/replace search for "complimentary" (replace with "complementary"). At least 2 or 3 cases of this typo. I did notice a couple other typos, but the general state of the draft was remarkably clean, as I can affirm from working for a few years as a copy editor (not to mention the impossibility of keeping mistakes out of my own published work).

Once again, a very nice piece of work... Of course, I also am thrilled with how well your work...interfaces with our own work on the Genesee River Wilds Project.

Thanks once again.

Allen Kerkeslager

APPENDIX G: GLOSSARY

Active recreation: Refers to a mix of uses in a neighborhood park that includes the following facilities or facility types: athletic fields, building or structures for recreational activities, concession, community garden, courses or courts, children's play area, dog play area, or a bike path. (Source: http://www.parks.sfgov.org/wcm_recpark/DAP/AppendixC.pdf)

Activity Crossover: In reference to tourism activities; refers to the likeliness of visitors to try new or different activities. For example, a tourist visiting a location for the sole purpose of fishing may chose to visit a local museum if conditions are unfavorable.

Anoxic: In reference to water quality; refers to areas of water which are depleted of dissolved oxygen. Anoxic conditions may be the result of or may lead to aquatic organism mortality. The condition generally leads to water conditions which are undesirable for recreation activities.

Critical Mass: The scale or volume at which processes become self-perpetuating. In this context, it refers to the number of visitors necessary which will allow a site or corridor to become self-sustaining in terms of use, activity or overall popularity.

Karst: Landscape that is shaped by the dissolution of a layer or layers of soluble bedrock, usually carbonate rock such as limestone or dolomite. Due to subterranean drainage, there may be very limited surface water, even to the absence of all rivers and lakes. A stretch of Oatka Creek from the Village of LeRoy downstream to Buttermilk Falls is a known karst region, decreasing surface water flows considerably.

Node: in this context, refers to a point or area of intersection; nodes can vary in size and significance and may serve as an important terminal

River Right/River Left: refers to the side of the river as one is facing down-stream.