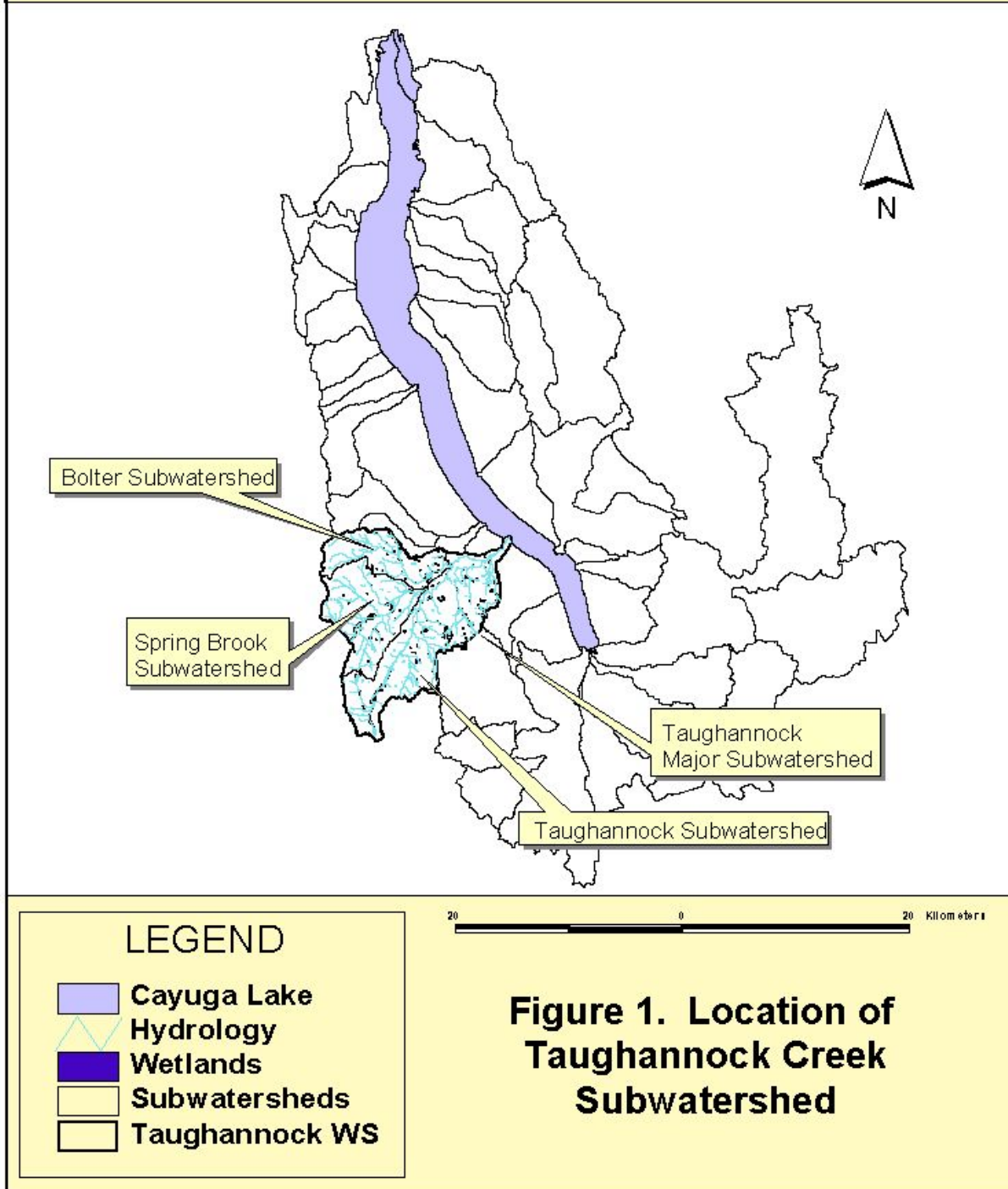


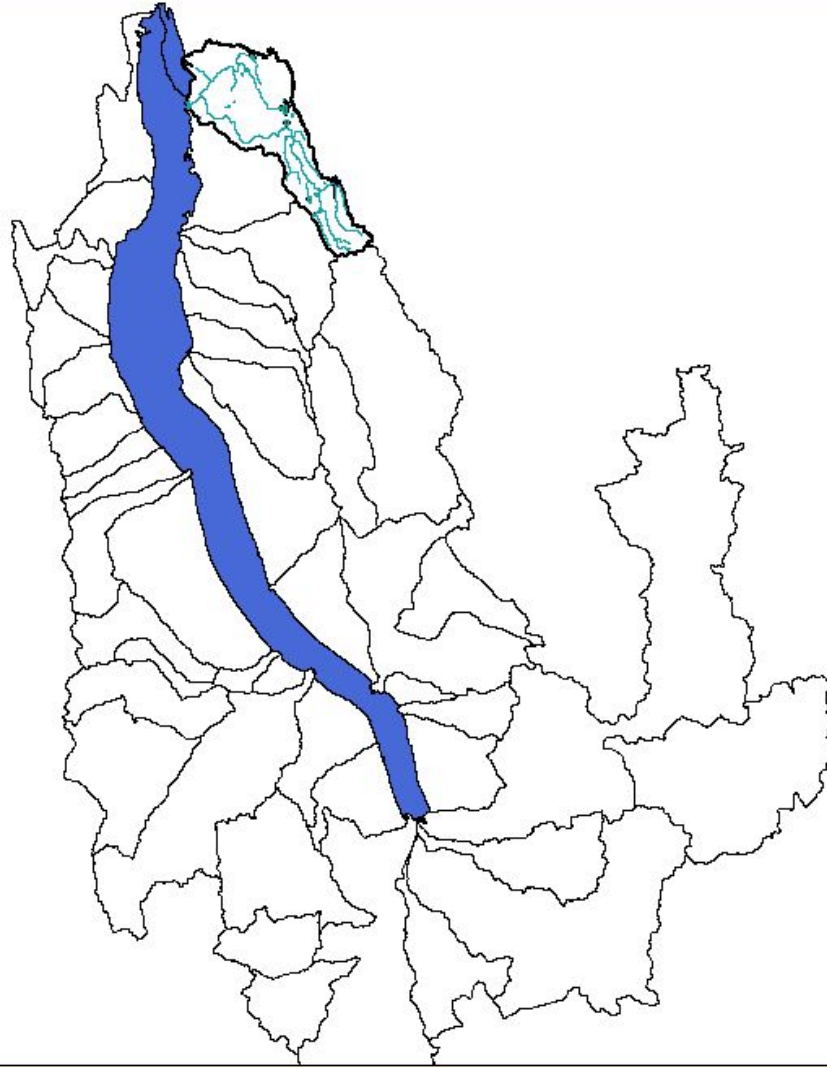
Many sources of data and information are needed to complete the assessment. Site-specific field information is needed to complete site prioritization as well to prepare design of restoration projects. The following data sources related to the Cayuga Lake watershed were used in this application of the technical strategy to the Cayuga Lake Watershed.

- United States Fish & Wildlife Service (FWS) National Wetland Inventory Maps (NWI) (digitized where unavailable in digital format)
- New York State Department of Environmental Conservation (NYSDEC) Freshwater Wetland Maps
- NYSDEC wetland classification
- New York State's Land Use and Natural Resource (LUNR) Inventory (LUNR Classification Manual, 1971)
- Federal Emergency Management Agency (FEMA) Maps (Map 3)
- 7 ½ minute quadrangle U.S. Geological Survey Maps
- Aerial Photos (orthophotos, NYSDEC)
- Other remote sensing data (e.g., satellite imagery)
- Cayuga Lake Watershed Streambank Inventory (G/FLRPC, 2000)
- Cayuga Lake Watershed Roadbank Inventory (G/FLRPC, 2000)
- Hydrology map (NYSDEC)
- Hydrology gauging data
- Subwatersheds
- Land use (digitized from digital orthophotos, 12/00 - 2/01)
- General soil associations
- Detailed soil associations
- Tourism and recreation data
- *Cayuga Lake Preliminary Watershed Characterization* (G/FLRPC, 2000)

Cayuga Lake Watershed




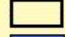



Cayuga Lake Watershed



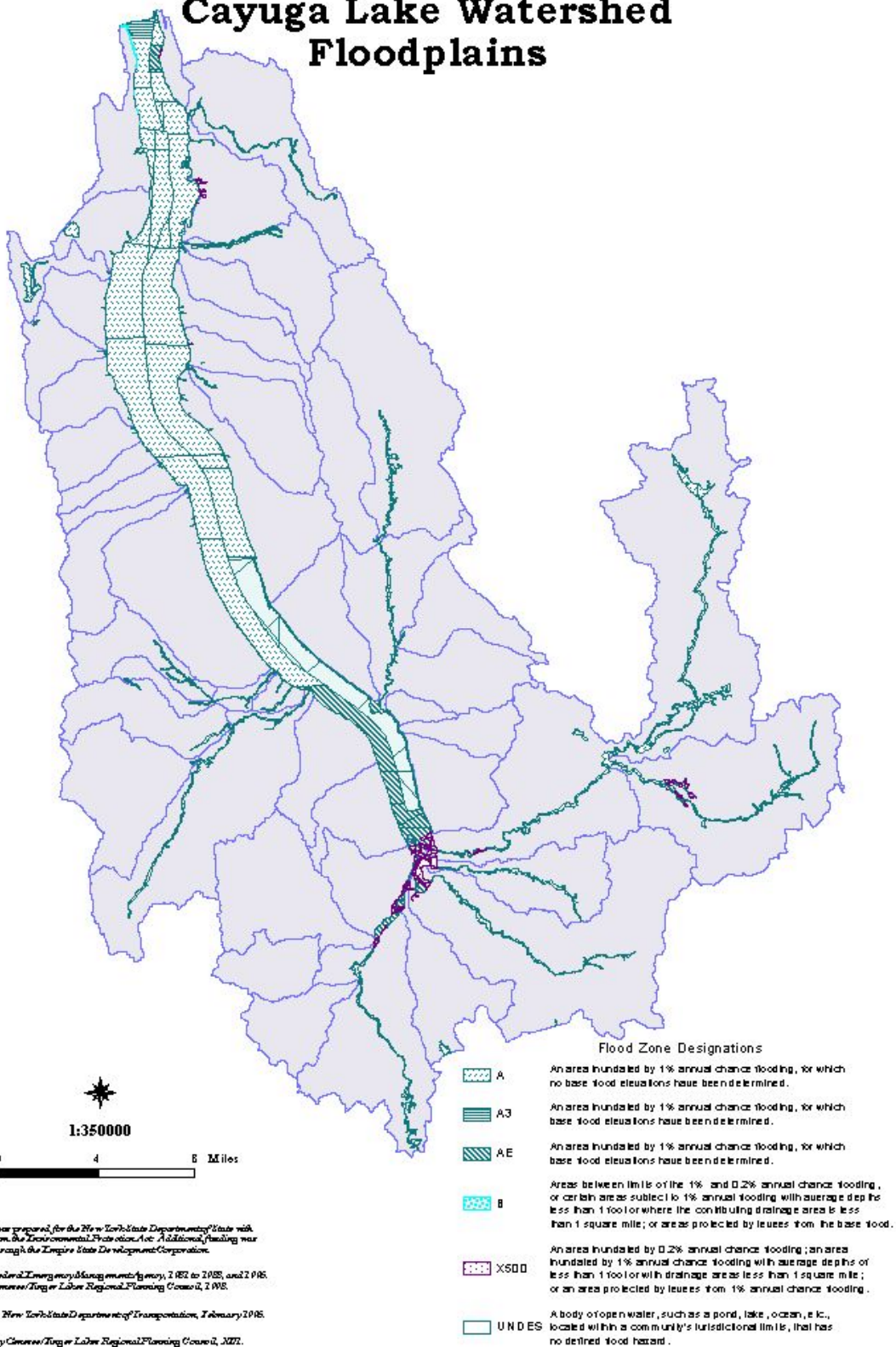
20 0 20 Kilometer

LEGEND

-  Yawger-hydro-clip.shp
-  Wetyawger.shp
-  Wtrshd
-  Yawger.shp
-  Cayugalake.shp

**Figure Y-1. Location
of Yawger Creek
Subwatershed**

Cayuga Lake Watershed Floodplains



Map 3