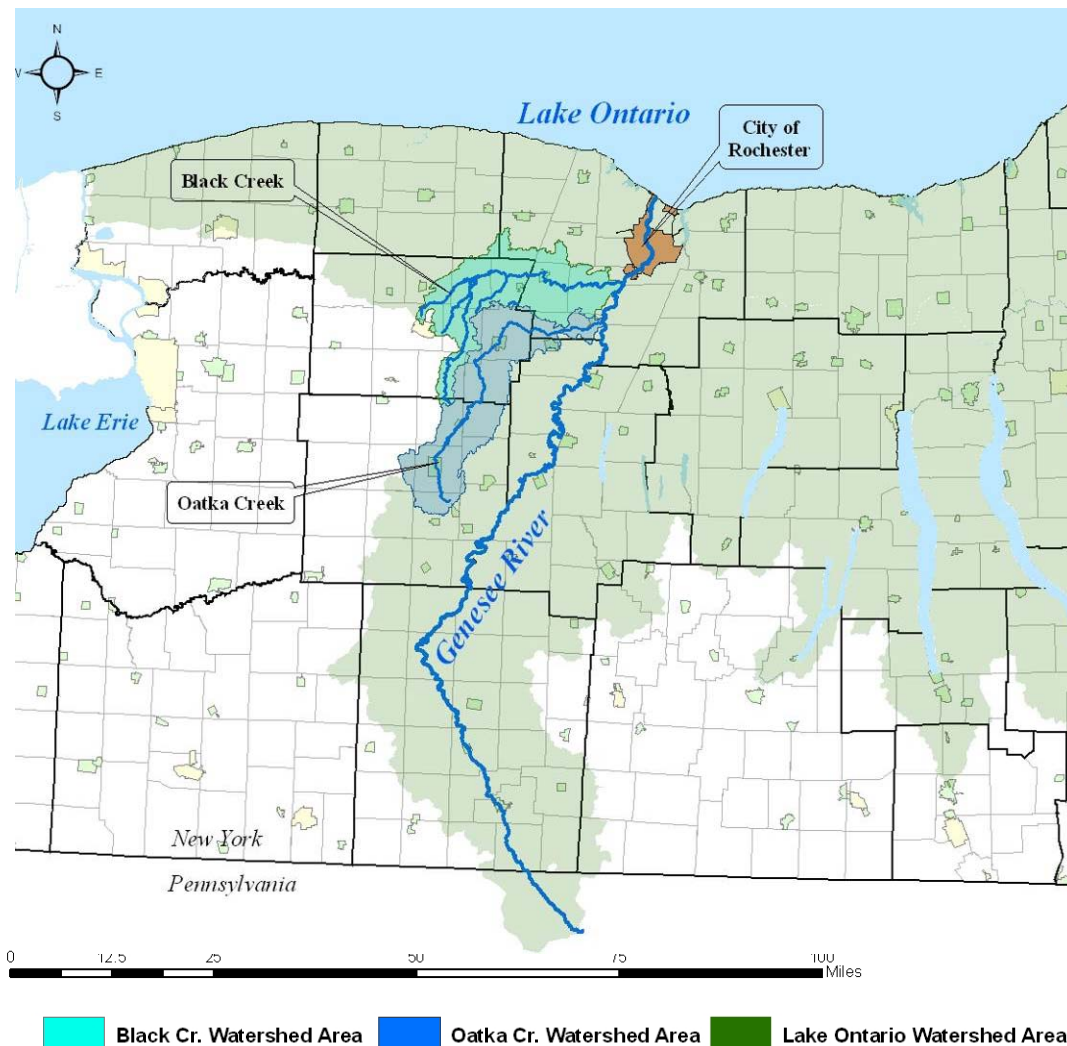


## II. INTRODUCTION

The assessment of local laws and their relationship to erosion and sediment control in the Black Creek and Oatka Creek watersheds was initiated in early 2005 by Genesee/Finger Lakes Regional Planning Council in fulfillment of Task III of the *Controlling Sediment in the Black and Oatka Creek Watersheds* project. This process began by conducting a general land use regulation inventory which focused on three primary building blocks of land use control in New York State: the comprehensive plan, zoning, and subdivision regulation. The 28 municipalities within the two watersheds vary significantly in terms of area, demographics and geography. While such regulations are common among most municipalities in New York State, the presence of these basic components of land use control can not be assumed. Results of this basic land use inventory can be found in Chapter 3.

### Overview of the Black and Oatka Creek Watersheds/Lake Ontario Drainage



Subsequently, a much more detailed assessment was conducted using a ‘best management practices’ (BMP) assessment tool. This tool was originally developed by the New York State Department of State Division of Coastal Resources for use with the Long Island South Shore Assessment and Lake George Watershed Assessment – projects initiated in the late-1990s. The form was adopted and modified by G/FLRPC for use in the *Local Laws to Protect Finger Lakes Water Quality* project (completed in 2005). In an effort to better reflect the issues and concerns particular to residents and officials in the Black Creek and Oatka Creek watersheds, the assessment tool was modified further for use in this project.

The entire assessment process was conducted in order to gain a thorough understanding of existing local laws, ordinances, and practices, many of which impact land use and ultimately water resources in the two watersheds. The BMP assessment form lists 130 individual best management practices which are divided into six primary categories, as shown below.

**1. Development**

- Existing Development
- New Development and Substantial Redevelopment

**2. Forestry and Agriculture**

- Forestry
- Agriculture

**3. Waterways and Wetlands**

- Modified Waterways
- Wetlands and Riparian Area Management and Restoration

**4. Recreation**

- Golf Courses

**5. Roads and Bridges**

- Existing Roads and Bridges
- New Roads and Bridges
- All Roads and Bridges (existing and new)

**6. Onsite Wastewater Treatment Systems (OWTS)**

- (There are no sub-categories for OWTS)

*\*Detailed copies of this form can be found in Appendix F.*

The existing local laws of the 28 municipalities were reviewed against these 130 best management practices. Utilizing G/FLRPC’s library of local land use ordinances, staff began the process of local law assessment in the spring of 2005. Tables summarizing the results of this assessment can be found throughout the body of this report. Due to their large volume, unabridged assessment forms are not included in this report; however, each is available for download on the project website. In it, each BMP has been cited according to its source.