

## **Black Creek Watershed Fact Sheet**

### **Definitions**

- Best Management Practices - A series of approved practices that can be used to address specific pollution problems.
- Erosion - The wearing away of the land surface by running water, wind, ice, or other geologic agents and by such processes as gravitational creep.
- Flooding - The temporary covering of soil with water from overflowing streams, runoff from adjacent slopes, and tides.
- Floodplain - The area that borders a water body and is subject to flooding on a periodic basis.
- Nonpoint source pollution - Type of pollution involving complex transport and delivery mechanisms within the watershed. Unlike point source pollution, where the pollutants are discharged directly to the waterbody. Thus, this pollution is much more difficult to control.
- Point source pollution - Form of pollution where the pollutants are discharged directly ("pipe" discharge) to a water source.
- Pollutant - Any particle or substance that disturbs the operation of an ecosystem.
- Pollution - Any activity that causes an impairment in the environment.
- Runoff - The precipitation discharged in stream channels from a drainage area. The water that flows off the land surface without sinking in is called surface runoff; that which enters the ground before reaching surface streams is called ground-water runoff or seepage flow from ground water.
- Watershed - All of the land area that drains to a common point.

### **Black Creek Watershed Facts:**

- Watershed - All of the land area that drains to a common point
- 202 square miles which equals 128,358 acres
- 46 miles long
- Watershed encompasses 14 towns: Chili, Batavia, Bergen, Bethany, Byron, Clarendon, Elba, Le Roy, Middlebury, Ogden, Riga, Stafford, Sweden, and Wheatland and Villages of Churchville and Bergen
- There are 35,030 people living in the watershed (Census 2000). 49% of these people live in the town of Chili. The next highest percentage is Riga with 15%
- Four towns have more than 85% of their population living in the watershed: Riga (100%), Byron (100%), Bergen(96%), and Stafford(86%).
- 79% of the land in the watershed is agricultural/idle.

### **Contact Information:**

Black Creek Watershed Coalition; c/o Monroe County Department of Planning & Development

50 West Main St., Suite 8100; Rochester, NY 14614

Tel: (585) 428-5464; Fax: (585) 428-5336

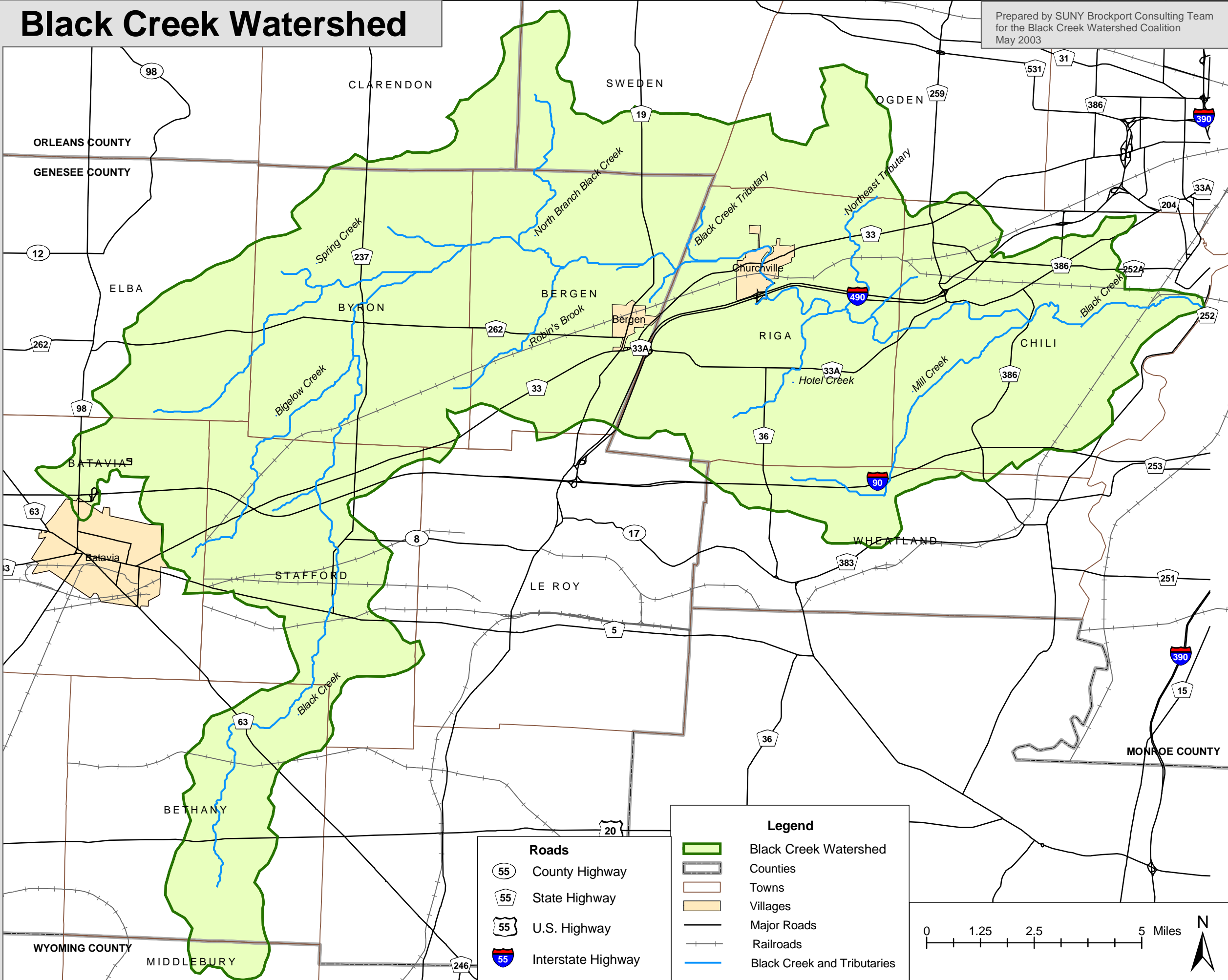
Email: [rbell@monroecounty.gov](mailto:rbell@monroecounty.gov)

OCWC Web Page: [www.blackcreek.org](http://www.blackcreek.org)

# Black Creek Watershed

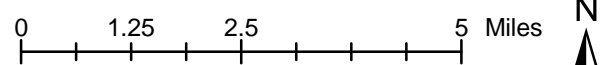
Prepared by SUNY Brockport Consulting Team  
for the Black Creek Watershed Coalition  
May 2003

# Black Creek Watershed



- Roads**
- County Highway
  - State Highway
  - U.S. Highway
  - Interstate Highway

- Legend**
- Black Creek Watershed
  - Counties
  - Towns
  - Villages
  - Major Roads
  - Railroads
  - Black Creek and Tributaries



DISCLAIMER: A degree of error is inherent in all maps. This map is distributed "AS-IS" without warranties of any kind, either expressed or implied, including but not limited to warranties of suitability to a particular purpose or use. This map is for illustration purposes only. It is not suitable for site-specific decision making, should not be construed as a legal document or survey instrument, and should not be used for making financial or any other commitments.