

## **Oatka Creek Watershed Fact Sheet**

### **Definitions**

- Best Management Practices - A series of approved practices that can be used to address specific pollution problems.
- Erosion - The wearing away of the land surface by running water, wind, ice, or other geologic agents and by such processes as gravitational creep.
- Flooding - The temporary covering of soil with water from overflowing streams, runoff from adjacent slopes, and tides.
- Floodplain - The area that borders a water body and is subject to flooding on a periodic basis.
- Nonpoint source pollution - Type of pollution involving complex transport and delivery mechanisms within the watershed. Unlike point source pollution, where the pollutants are discharged directly to the waterbody. Thus, this pollution is much more difficult to control.
- Point source pollution - Form of pollution where the pollutants are discharged directly ("pipe" discharge) to a water source.
- Pollutant - Any particle or substance that disturbs the operation of an ecosystem.
- Pollution - Any activity that causes an impairment in the environment.
- Runoff - The precipitation discharged in stream channels from a drainage area. The water that flows off the land surface without sinking in is called surface runoff; that which enters the ground before reaching surface streams is called ground-water runoff or seepage flow from ground water.
- Watershed - All of the land area that drains to a common point.

### **Oatka Creek Watershed Facts:**

- Watershed encompasses 215 square miles (see Oatka Creek Watershed Map)
- NYSDEC "Blue Ribbon" Trout Stream
- 58 miles long
- Begins south of Warsaw and ends at the Genesee River in Wheatland
- Flows through 4 Counties & 23 Towns and Villages

### **Oatka Creek Watershed Committee Mission:**

*To preserve the pristine character and water quality now present in Oatka Creek for future generations through the development, promotion, and implementation of an Oatka Creek Watershed Management Plan*

### **Oatka Creek Watershed Committee Contact Information:**

Richard T. VenVertloh, Chairman, Oatka Creek Watershed Committee

P.O. Box 181

Scottsville, New York, 14546

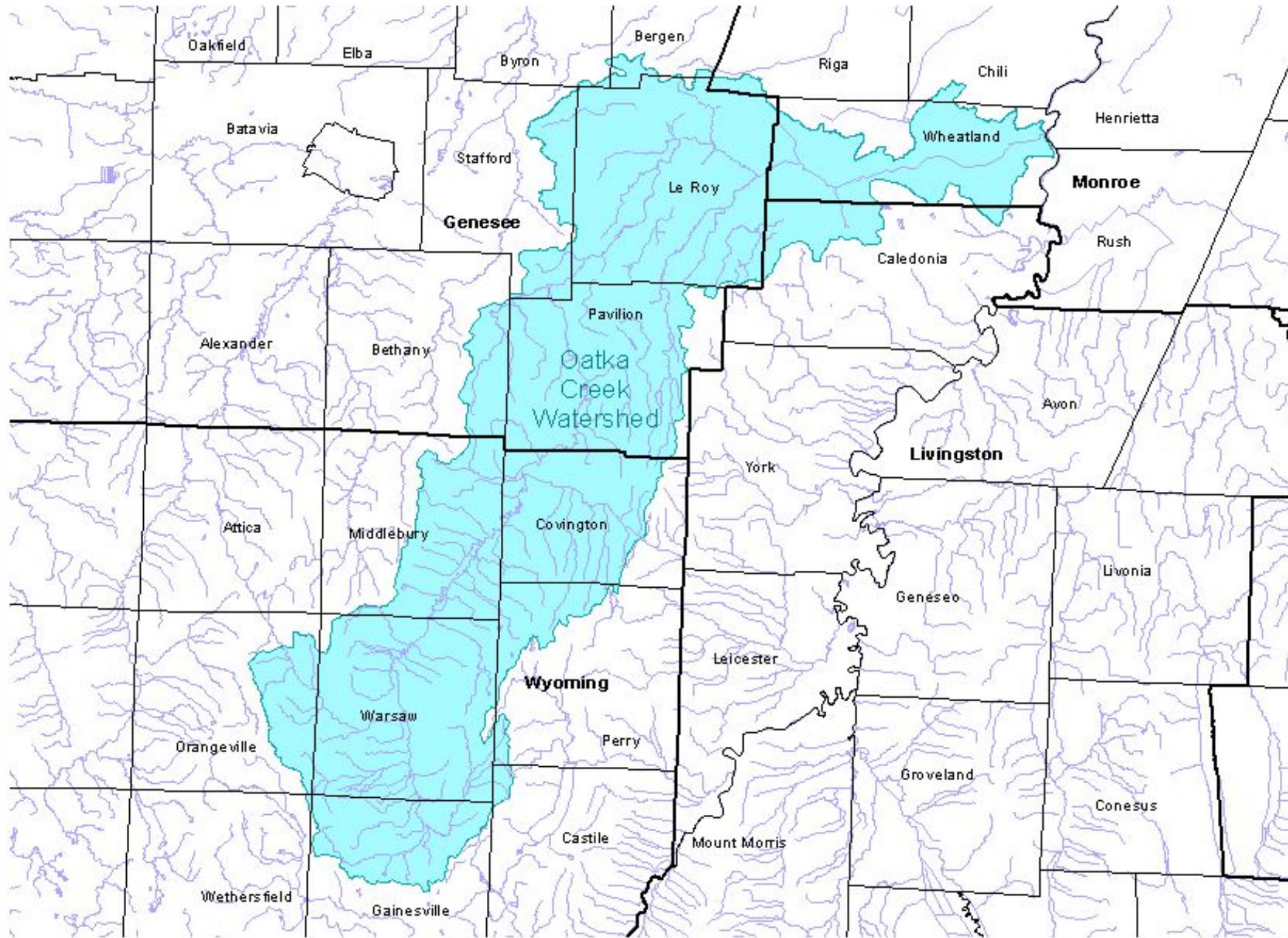
Home Phone: (585) 889-5293

Work Phone: (585) 295-6226

E-Mail: [rvenvertloh@labellapc.com](mailto:rvenvertloh@labellapc.com)

OCWC Web Page: [www.oatka.org](http://www.oatka.org)

# Oatka Creek Watershed



-  Hydrography
-  Town
-  County
-  Watershed

