

Genesee County

Public Transportation

Genesee County is served by the Batavia Bus Service, which is a subsidiary of Rochester-Genesee Regional Transportation Authority (R-GRTA) in cooperation with the Genesee County Legislature. The Batavia Bus Service fleet consists of six 16-passenger buses, five 25-passenger buses, and two vans with four seats and additional room for two wheelchairs on each. All of the vans and 16-passenger buses are lift equipped.

Batavia Bus Service's *B-Line* provides fixed route/fixed schedule service to the City of Batavia by way of three separate routes. Two of the routes are loops serving the same area but traveling in opposite directions. The "Purple Route" provides service from 6:00 AM to 6:00 PM and the "Green Route" from 7:30 AM to 5:00 PM on Monday through Friday. The third *B-Line* route, (the "Red Route"), serves as an extension of the others to and from Genesee Community College. The "Red Route" runs from 7:15 AM to 5:00 PM on Monday through Friday. Special pick-ups can be made on all three routes for disabled persons who cannot reach a corner. The fare for B-Line city service is \$1.00 each way for adults. Seniors traveling between 9:00 AM to 3:00 PM or 4:30 PM to 5:30 PM and children ages five to eleven accompanied by an adult at any time pay only 50 cents each way. Children under five are free to ride *B-Line* at all times with a parent or other fare paying adult. A subscription service is also available that includes service to and from work for a week for \$9. The same service offers youth ten trips to and from school at \$6.75 per week.

There are three demand responsive, flexible schedule/flexible route services also available. All require reservations 24 hours in advance of the day in which one intends to travel. A dial-a-ride program serves the City of Batavia within the city limits Monday through Friday. Another service between the City of Batavia and LeRoy is provided four times per day Monday through Friday, with an initial departure from Batavia at 8:15 AM and a final drop-off in Batavia at 6:00 PM. The destination/departure points of the service are the Genesee Country Mall in Batavia and the McDonald's Restaurant in LeRoy. Buses will pick up anywhere along Route 5 heading either eastbound or westbound. The price for the service is \$3 each way. A reduced fare for seniors and the disabled is available between 9:30 AM and 3:30 PM at \$1.50 each way. In addition, a primarily intra-county *Dial-a-Bus* program has also been instituted. It is available in 11 communities in Genesee County and the Village of Attica in Wyoming County on a one day a week cycle. The service schedule to the 12 communities is shown in Table 3.

The service provides door-to-door pick-up and drop-off for \$3 each way. Again, reduced fares of \$1.50 each way are available to senior citizens and disabled persons. One round trip is made to the City of Batavia each day. If no reservations are made for a particular community, the bus will not run to that specific community on that day.

Table 3 – *Dial-a-Bus* Services Schedule

Monday	Byron Bergen
Tuesday	Alabama

	Elba Oakfield
Wednesday	Alexander Attica
Thursday	Corfu Darien Pembroke
Friday	Bethany Pavilion

Source: Batavia Bus Service, 1998.

Disadvantaged Population

The southern and western portions of Genesee County and the Town of Stafford in the center of the county seem to have the least number of jobseekers according to DFA data from May of 1998. The zipcodes covering the northern portion of the county have slightly more TANF and Safety Net cases than the southern zipcodes, but significantly less than the central portion of Genesee County.

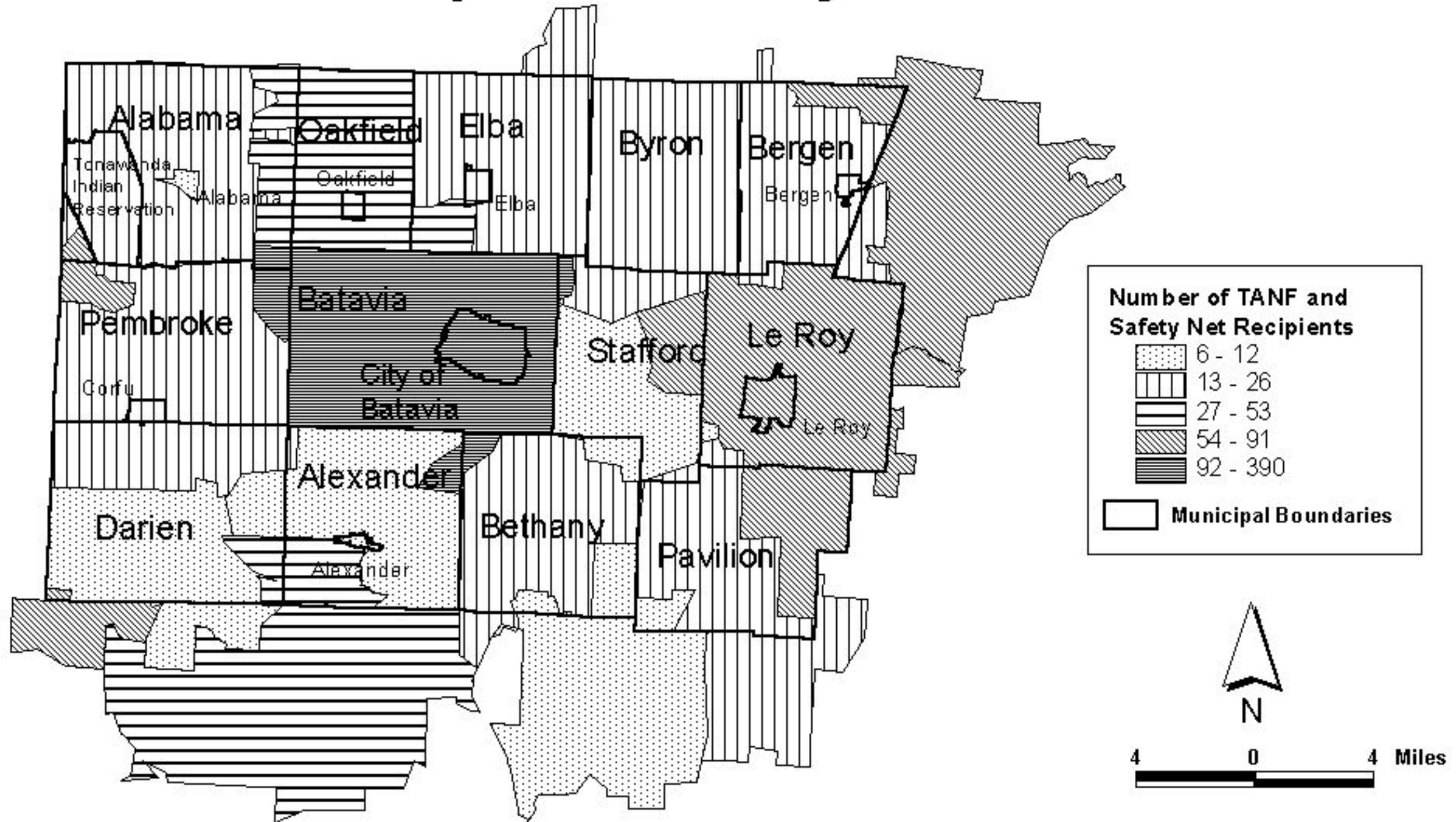
The largest number of persons likely to be in need of public transportation and utilizing public training services are concentrated in this central portion of the County. The zipcode covering the City and Town of Batavia (14020) had the largest total number of TANF and Safety Net cases in May 1998. The Town and Village of LeRoy in the county's west central area had the next highest number of TANF and Safety Net recipients. The number of TANF and Safety Net recipients in Genesee County by zipcode is shown in Map 1.

Data on employable TANF recipients at the beginning of 1999 provided by the Genesee County Job Development Bureau affirms that the majority of TANF recipients reside in Batavia. Following Batavia, LeRoy had the next highest number of employable TANF recipients, but the number of these persons in LeRoy and elsewhere throughout Genesee County was considerably less than those in Batavia.

Training Activities and Services

The Genesee County Job Development Bureau (JDB) provides several services at their office in Batavia. Included among them are career orientation and exploration, a job club, job securing workshops, and job readiness and vocational assessment. The Genesee County JDB recognizes the domestic needs of TANF recipients, and attempts to provide child care services at one of three daycare centers in Batavia. Classroom training is held at Genesee Community College, BOCES in Batavia, Fairport, and Spencerport, the YWCA, Warsaw Hospital, and The Metal Working Institute of Western New York in Depew (Erie County). These programs prepare TANF recipients for careers as Licensed Practical Nurses, machinists, and other occupations requiring a set of minimal industry-specific skills. Map 2 displays the locations of training sites used by the JDB to train and assess jobseekers in Genesee County.

Genesee County TANF and Safety Net Recipients by Zipcode - May 1998



The Genesee County JDB also provides transportation assistance to and from training and work sites for their clients. Attica Bus Service, a private provider, offers transportation at varying costs depending on where and what time the person or persons need to be picked up and their destination. Another private transportation provider, LaidLaw, also provides service. The cost of using LaidLaw can run approximately \$150 per day for each family. Both Laidlaw and Attica Bus Service will run on weekends and non-traditional (outside normal first shift) hours. However, the use of either or both of these providers is prohibited by their cost.

In 1998, the cost for Laidlaw and Attica Bus Service combined was in excess of \$35,000. As a response to the high costs of private providers, the Genesee County JDB also leases a county van to transport clients to their office, training facilities, and work sites. In 1998, the cost of leasing the van was approximately \$4,600. In addition, family and acquaintances of jobseekers and others that provide transportation to and from JDB activities or programs are reimbursed for mileage. The same is done for JDB and other county staff who provide transportation to clients in the same manner. Costs for staff and others involved in this manner were just under \$38,000 in 1998.

The Genesee County DSS currently operates the Car and Reemployment Empowerment (CARE) Program. Through this, the Genesee County DSS assists jobseekers in purchasing and maintaining an automobile. The program is funded by a \$25,000 federal grant and is administered by the Bank of Castile. There is currently one car dealer participating in the program.

Employment Opportunities

The large percentage of the firms in Genesee County engaged in commercial activity (as defined in the methodology) can be found in and around the City of Batavia. Map 3 shows the distribution of these firms in Genesee County. As could be expected, the majority of commercial firms are located in the villages and along routes 5, 19, 33, and 98. Firms and agencies providing services to the community and offering potential entry-level employment opportunities are shown in Map 4, and are also concentrated in the City of Batavia and along major routes. Maps 5 and 6 display B-Line daily routes and the locations of commercial and community service firms that may have positions that can be filled by jobseekers with a minimal set of skills. The B-Line daily routes appear to serve most of these firms and adequately provide public transportation during first-shift hours for those persons without access to a private automobile.

According to the Genesee County Industrial Development Agency, there are entry-level employment opportunities in the Batavia Gateway Corporate Park, located on Route 98 just off NYS Thruway exit 48. A plastics injection molding facility, hotel, and federal corrections detainment center are located on or within close proximity to the industrial park. Retail development along NYS Route 5 in the Town of Batavia also offers entry-level employment opportunities. Office Max, Hutchens Automotive, and Auto Zone stores, as well as a soon to be reopened hotel, are located here.

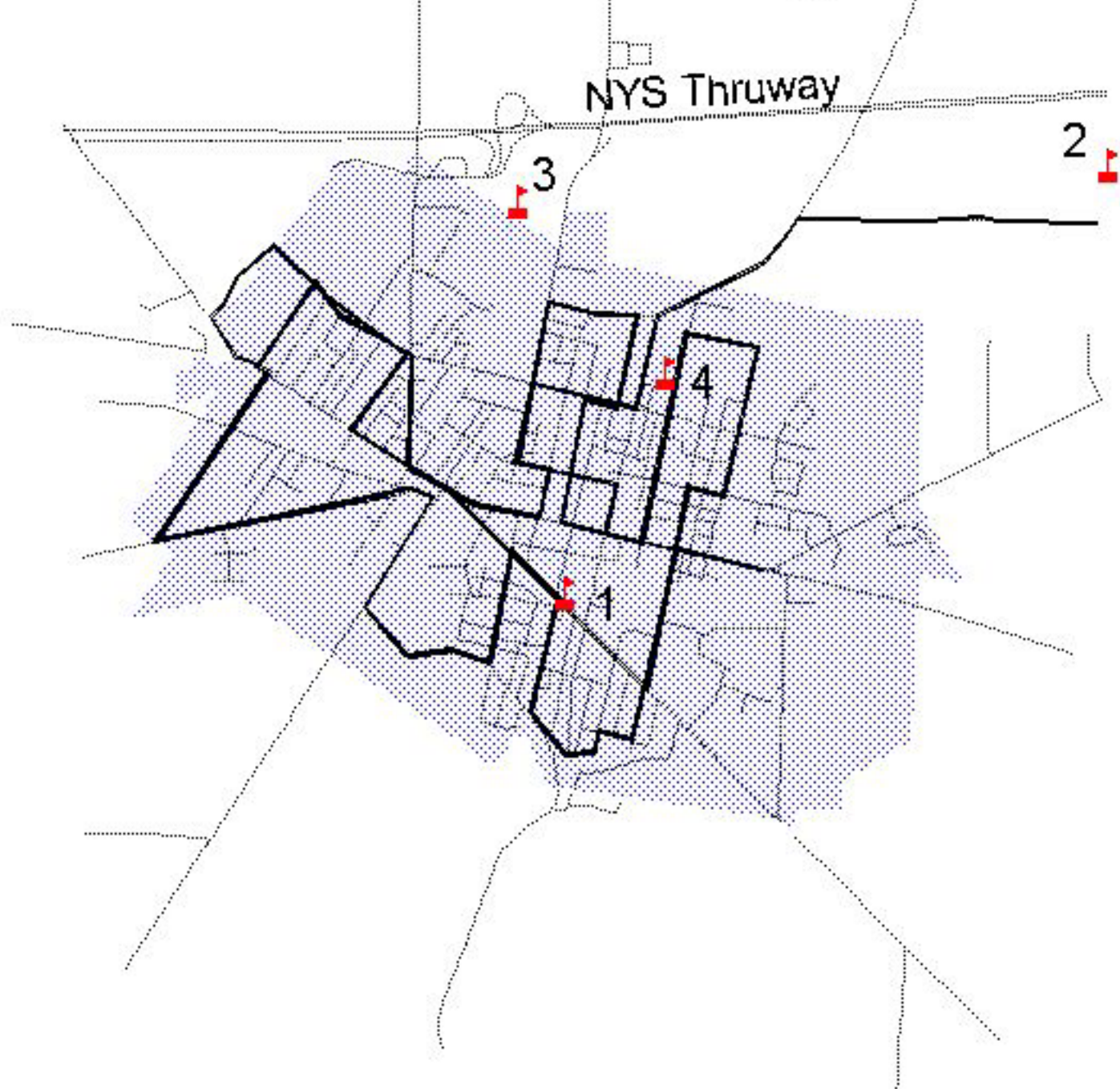
The acquisition of the former Darien Lake Amusement Park and Resort (now Six Flags Darien Lake) by Premier Parks includes a proposed \$20 million in improvements. According to the Rochester Democrat and Chronicle, this is in addition to the \$40 million already invested in the amusement park by Premier Parks over the last three years. Already a large source of seasonal employment for Genesee County, the amusement park provides a steady supply of customers to restaurants and other service and retail establishments located along NYS Route 77 south of Pembroke and Corfu.

A Genesee County JDB listing of employers that have hired former TANF recipients includes firms throughout Genesee county in the industries discussed above as well as child care centers and health care facilities. Map 7 displays the areas likely to yield further entry-level employment opportunities for TANF and Safety Net recipients in Genesee County.

Child Care Centers

The majority of licensed child care centers in Genesee County are located in the City and Town of Batavia. There are also licensed child care facilities in the Village of Bergen, LeRoy, and Darien. Map 8 shows the locations of licensed child care centers in Genesee County. In addition to the child centers shown in Map 8, there are approximately 180 licensed child care providers in Genesee County. The locations of these providers are available from the Community Action Agency.

Sites Used by the Genesee County Job Development Bureau to Train and Assess Disadvantaged Job Seekers



B-Line Daily Routes

Training Facilities

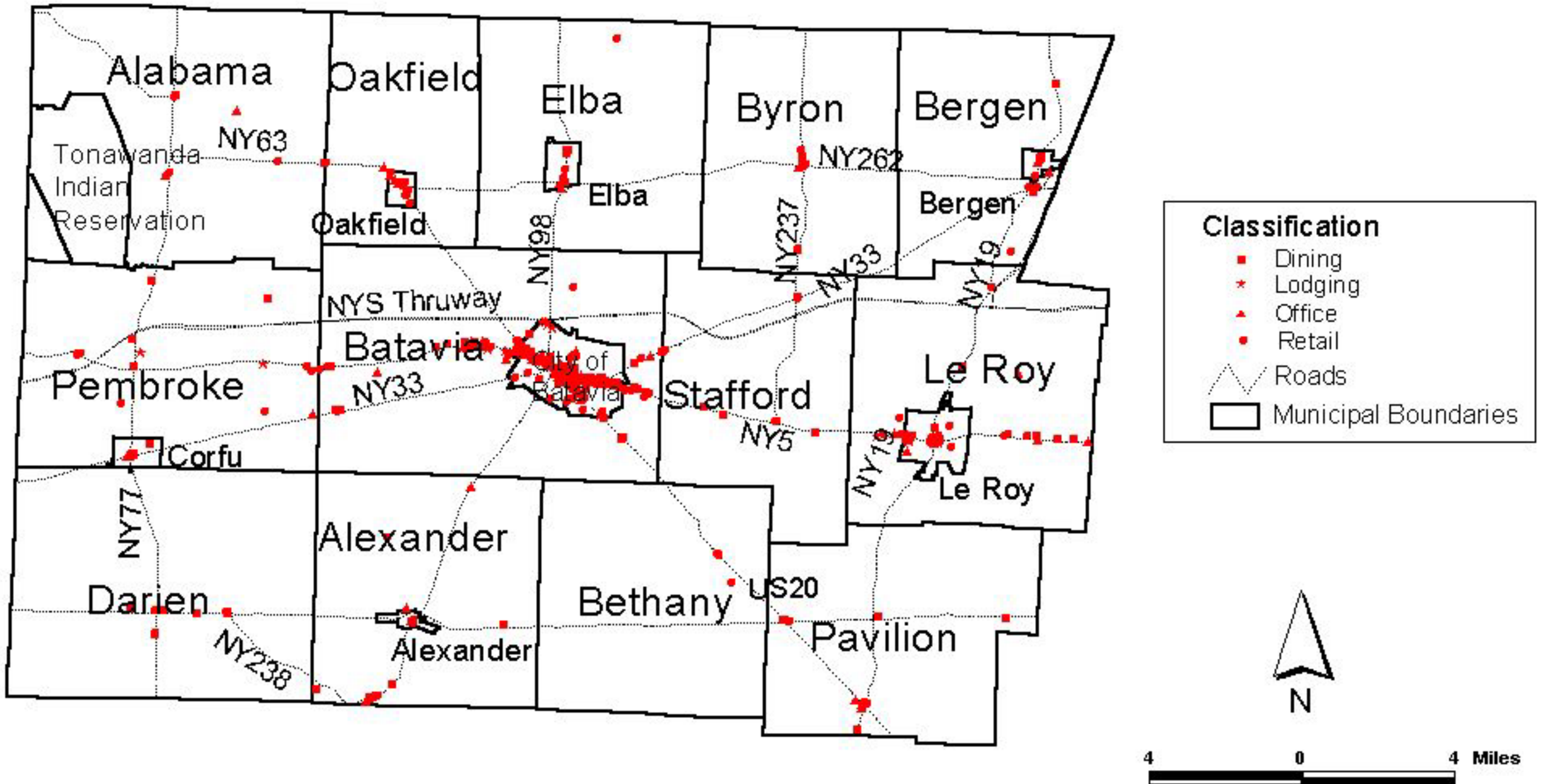
1. Genesee County JDB Office
2. Genesee Community College
3. BOCES
4. YWCA

Roads

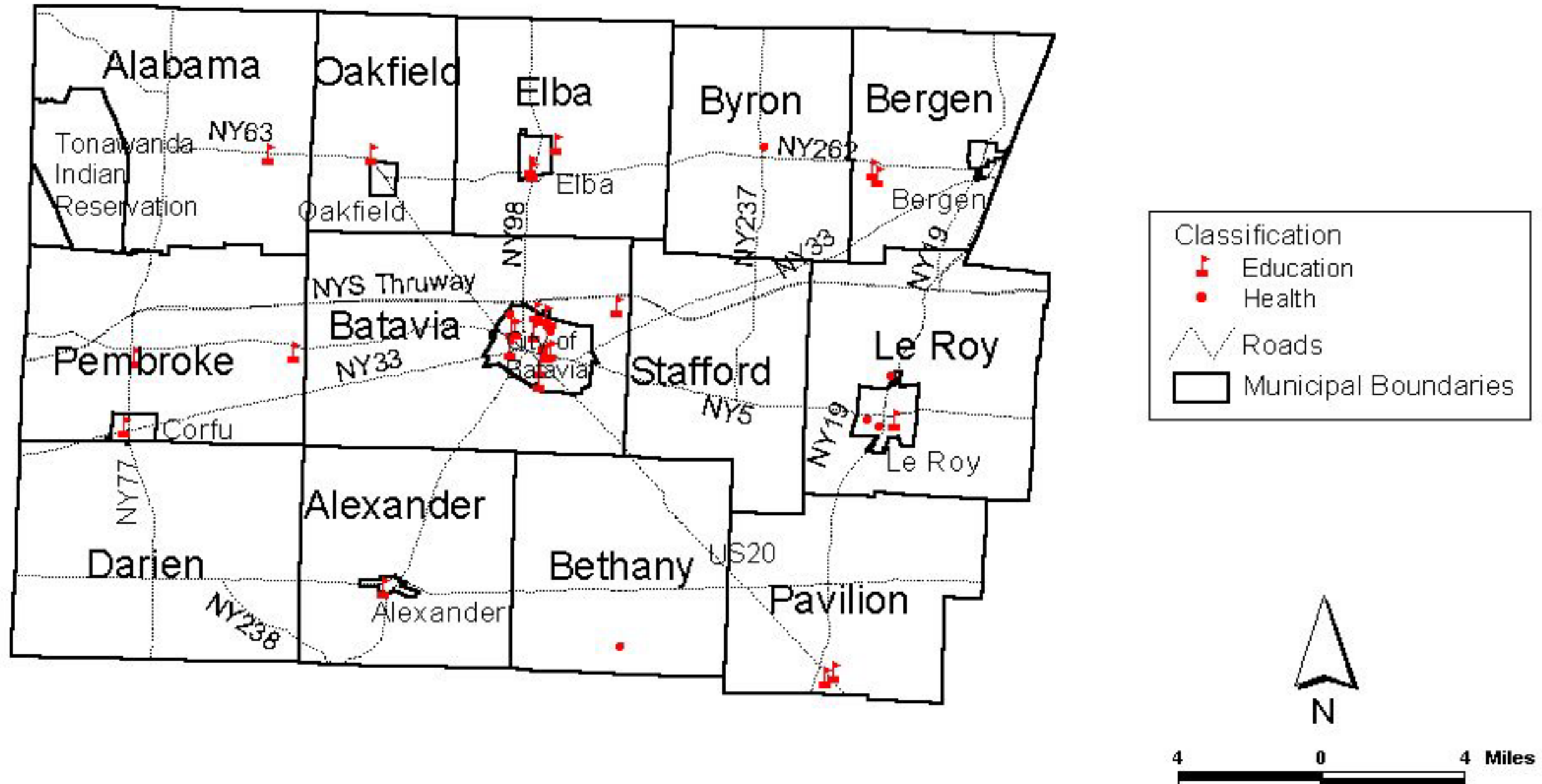
City of Batavia



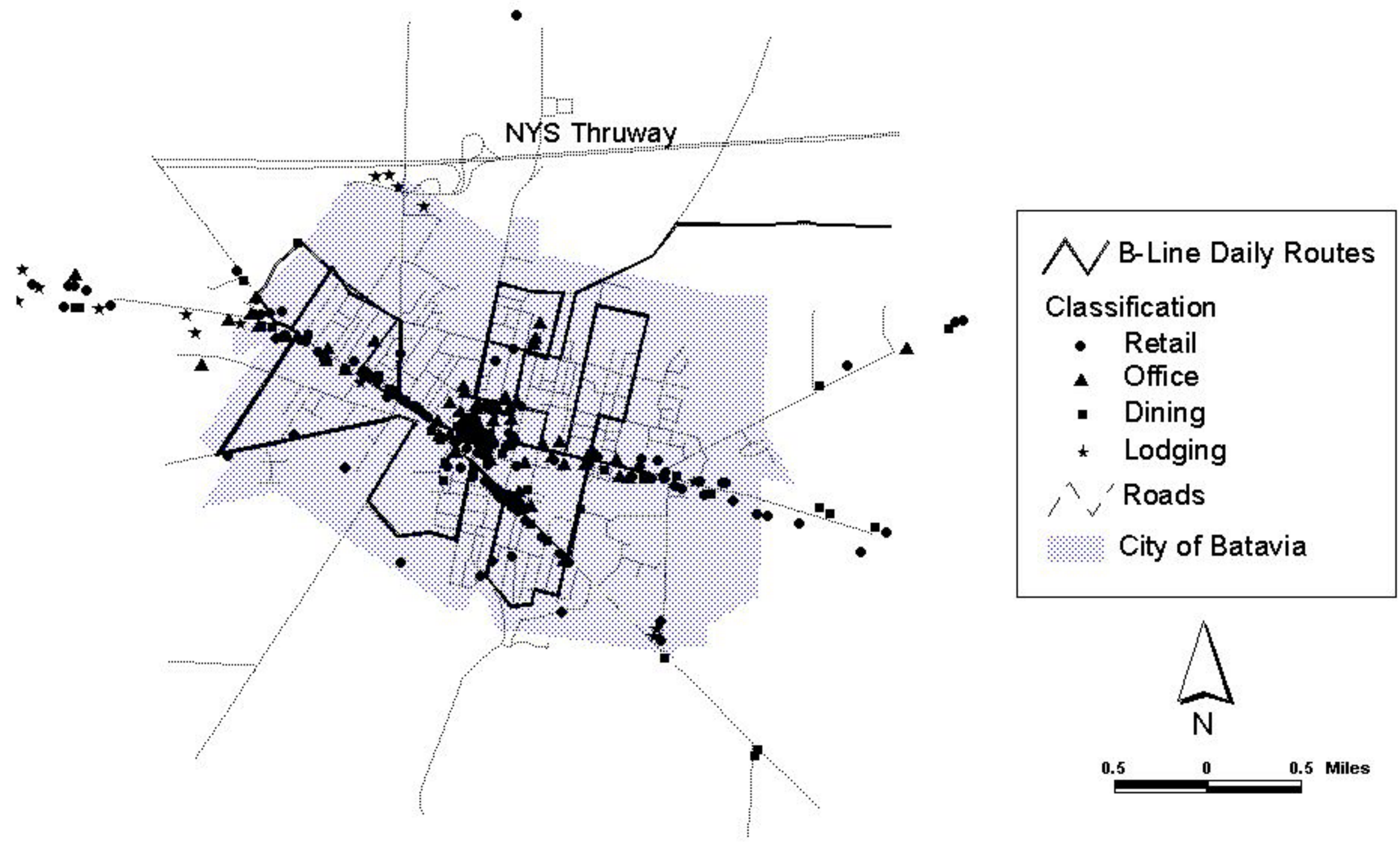
Commercial Firms with Potential Entry-Level Employment Opportunities in Genesee County



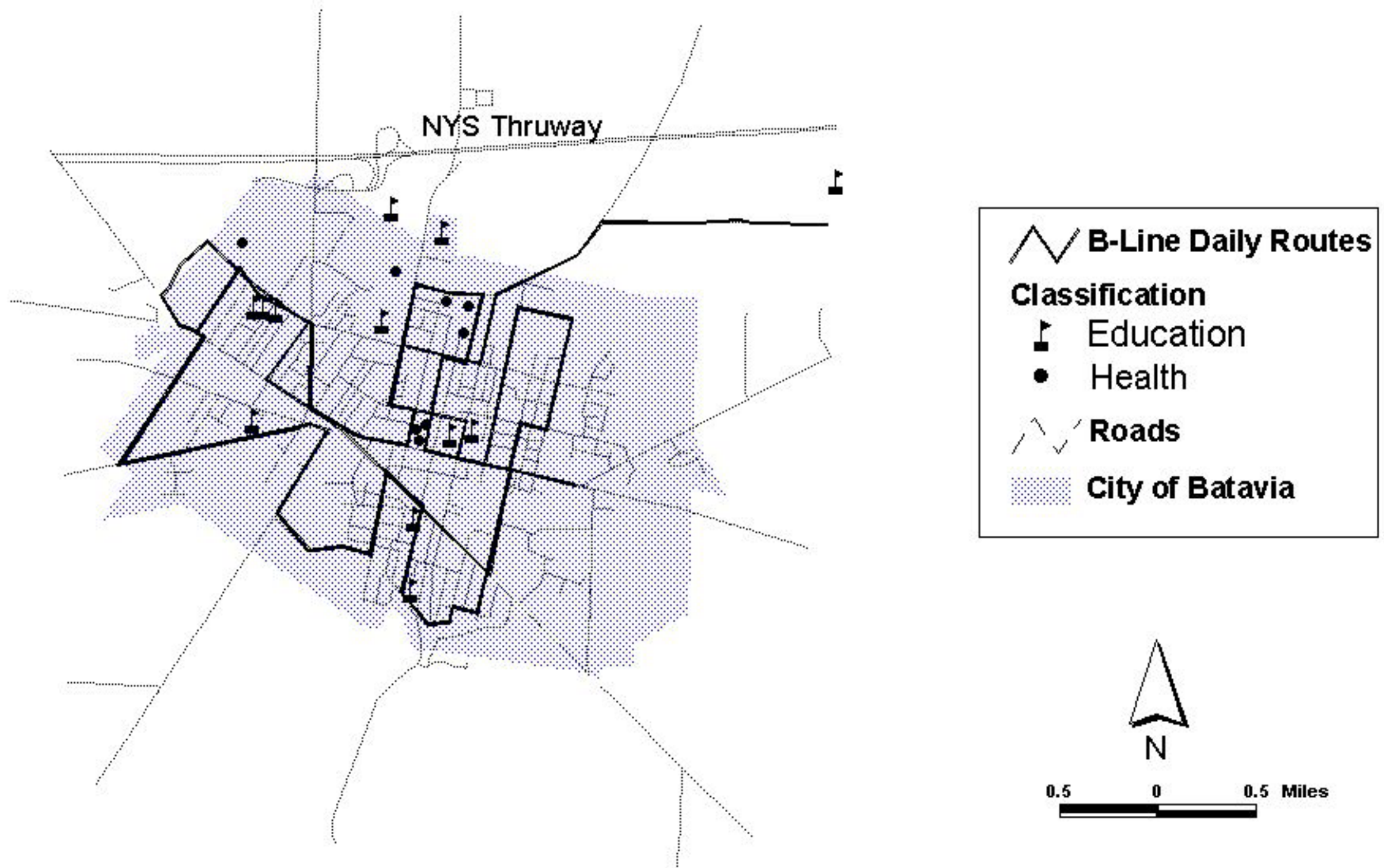
Community Service Firms with Potential Entry-Level Employment Opportunities in Genesee County



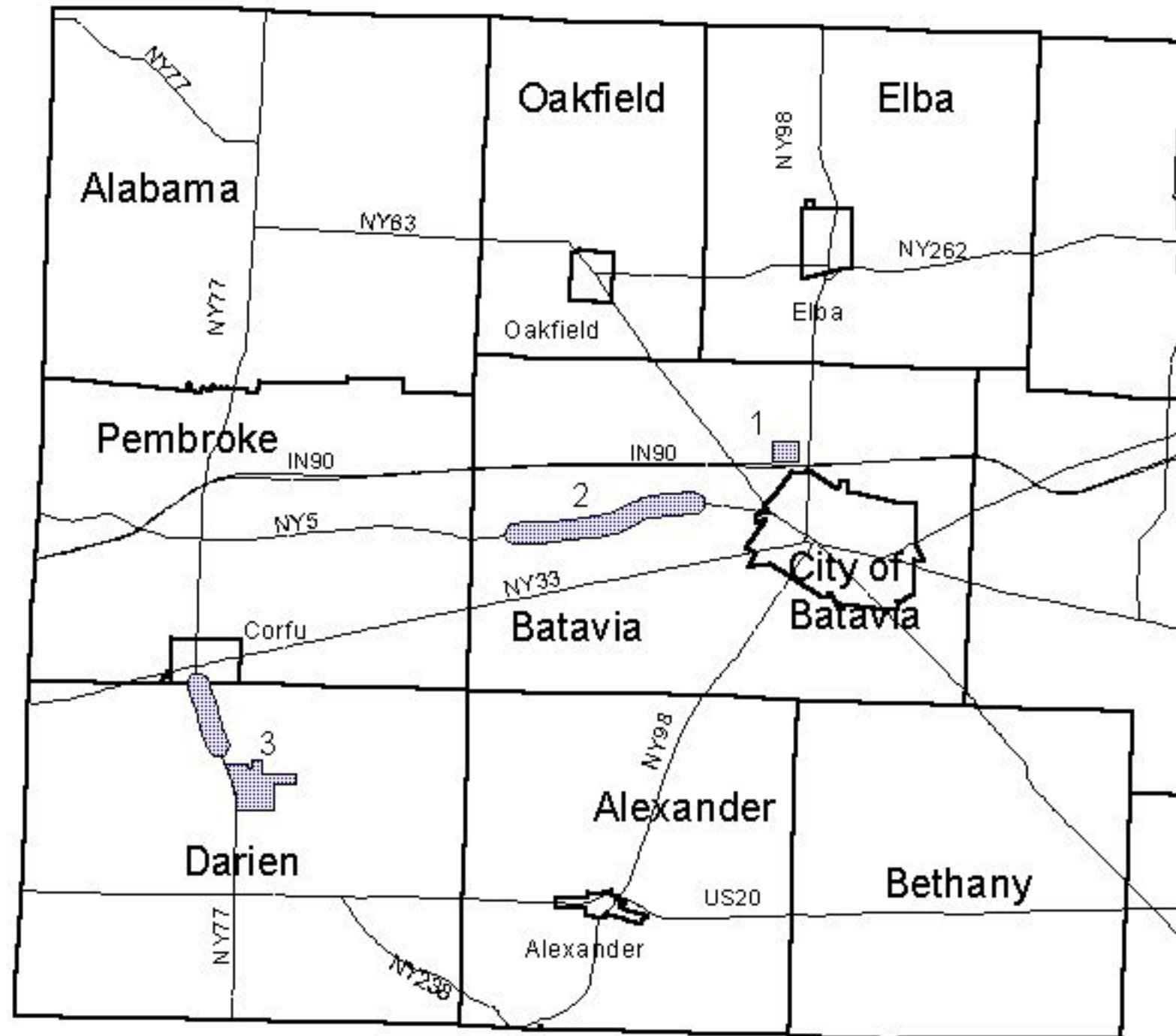
B-Line Daily Routes and Commercial Firms with Potential Entry-Level Job Openings



B-Line Daily Routes and Community Service Firms with Potential Entry-Level Job Openings



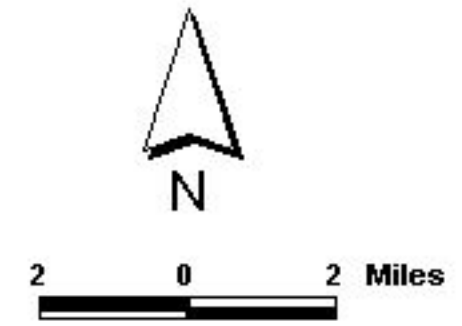
Expected Areas of Growth in Entry-Level Employment Opportunities in Genesee County



Expected Areas of Growth in Entry-Level Employment Opportunities

1. Batavia Gateway Corporate Park
2. Retail Development along NYS Route 5
3. Six Flags Darien Lake and Related Growth on NYS Route 77

 Roads
 Municipal Boundaries



Licensed Child Care Centers in Genesee County

