

Livingston County

Public Transportation

The Livingston Area Transportation Service (LATS), an R-GRTA subsidiary, provides flexible route/flexible schedule, demand responsive services throughout the county from 8:30 AM to 5:00 PM on weekdays. Twenty-four hours advance notice is required regarding origin and destination points. LATS has facilities in Avon, Dansville, and Mt. Morris. Buses are dispatched from each to serve different communities throughout the week. The communities served by each facility by day of the week are presented in Table 4.

Table 4 – LATS Services Schedule

	Avon	Dansville	Mt. Morris
Monday	-	Ossian West Sparta Dansville	Nunda Portage Mt. Morris
Tuesday	Caledonia York Avon	Dansville	Leicester Groveland Geneseo Mt. Morris
Wednesday	Lima Livonia Avon	Springwater Sparta Conesus Dansville	Nunda Portage Mt. Morris
Thursday	Caledonia York Avon	Ossian West Sparta Dansville	Groveland Geneseo Mt. Morris
Friday	Lima Livonia Avon	Dansville	-

Source: LATS, 1999.

Twenty five buses with 24 passenger capacity make up the LATS fleet. Special weekend services are offered at the request of a business or organization. The Wegman's supermarket in Geneseo schedules a bus on Saturdays for trips between the SUNY Geneseo campus and its Geneseo location on Lakeville Road (Route 20A). Operation Friendship, a Rochester based service for the recovering mentally ill, has a satellite office in Livingston County and also charters a LATS bus on Saturdays for its activities. The fare for intra-town trips using this service is \$1 each way with half price fares for seniors, the disabled, and children. Trips made between municipalities are double the intra-town rate with the same discount available to the groups mentioned above. Map 9 displays a composite of LATS weekly routes.

Disadvantaged Population

The TANF and Safety Net data provided by the DFA's Office of Temporary and Disability Assistance shows that the largest number of recipients are concentrated in the southern and western portions of Livingston County. The area including the towns of Mt. Morris, North Dansville, Nunda, and Springwater appeared to have the largest TANF and Safety Net population. Map 10 provides a view of the distribution of TANF and Safety Net recipients in Livingston County. The Livingston County DSS' temporary assistance case load by township for December 1997 concurs with the DFA data in terms of ranking within the county. In December of 1997, North Dansville, Mt. Morris, Nunda and Springwater had the largest number of persons enrolled in temporary assistance programs.

Training Services and Activities

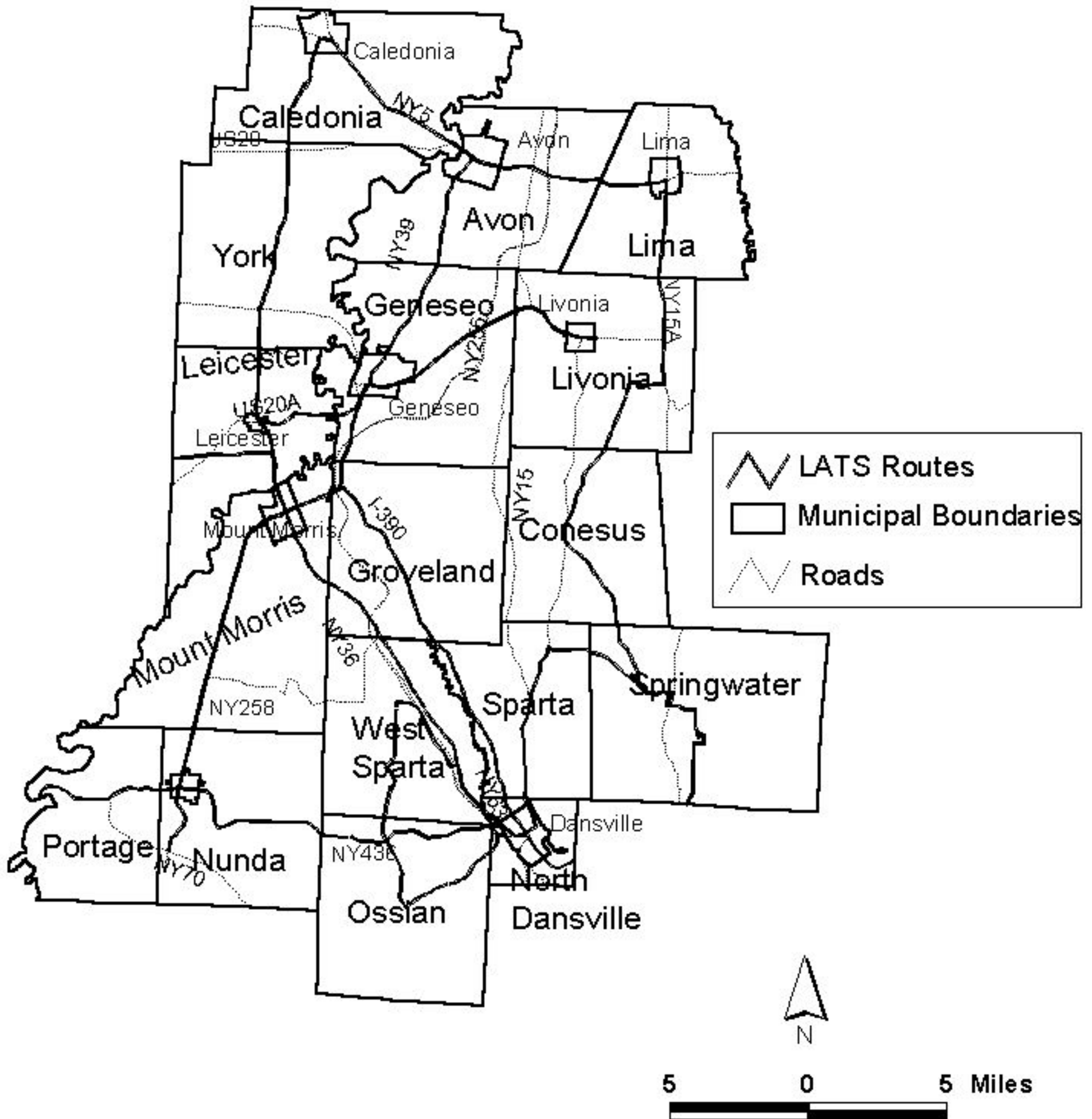
The Livingston County Employment and Training Department (ETD) provides five day job seeker workshops and one day weekly job clubs for eligible TANF and Safety Net recipients at the Livingston County Government Center in Geneseo. Currently, only a small number of temporary assistance recipients participate in Job Training Partnership Act (JTPA) occupational retraining. LATS offers transportation to some of the five day workshops and also assists some of the welfare recipients in getting to the weekly job clubs.

Vocational and classroom training is provided for a number of occupations including dental assistant, professional driver, licensed practical nurse, and administrative and business-related support positions. This training is carried out by a number of organizations, public and private, both within Livingston County and the surrounding counties of Genesee, Monroe, Ontario, and Wyoming, as well as SUNY College of Technology at Alfred State in Allegany County. The Genesee Community College Livingston Campus Center in Lakeville and Genesee Valley BOCES in Mt. Morris provide training services within the county. Job seekers attend classes at local colleges including Monroe Community College, SUNY Brockport and Rochester Institute of Technology. BOCES centers in Fairport and Spencerport also enroll Livingston County job seekers in Monroe County. In addition to public agencies, the Livingston County ETD, to a large extent, is also using private training providers in Monroe County. The more populous communities in Monroe County provide a larger market for private training providers than can be found elsewhere in the region, and the Livingston County ETD is making use of this situation. Private career training and counseling centers in Monroe County currently being used by the Livingston County ETD include:

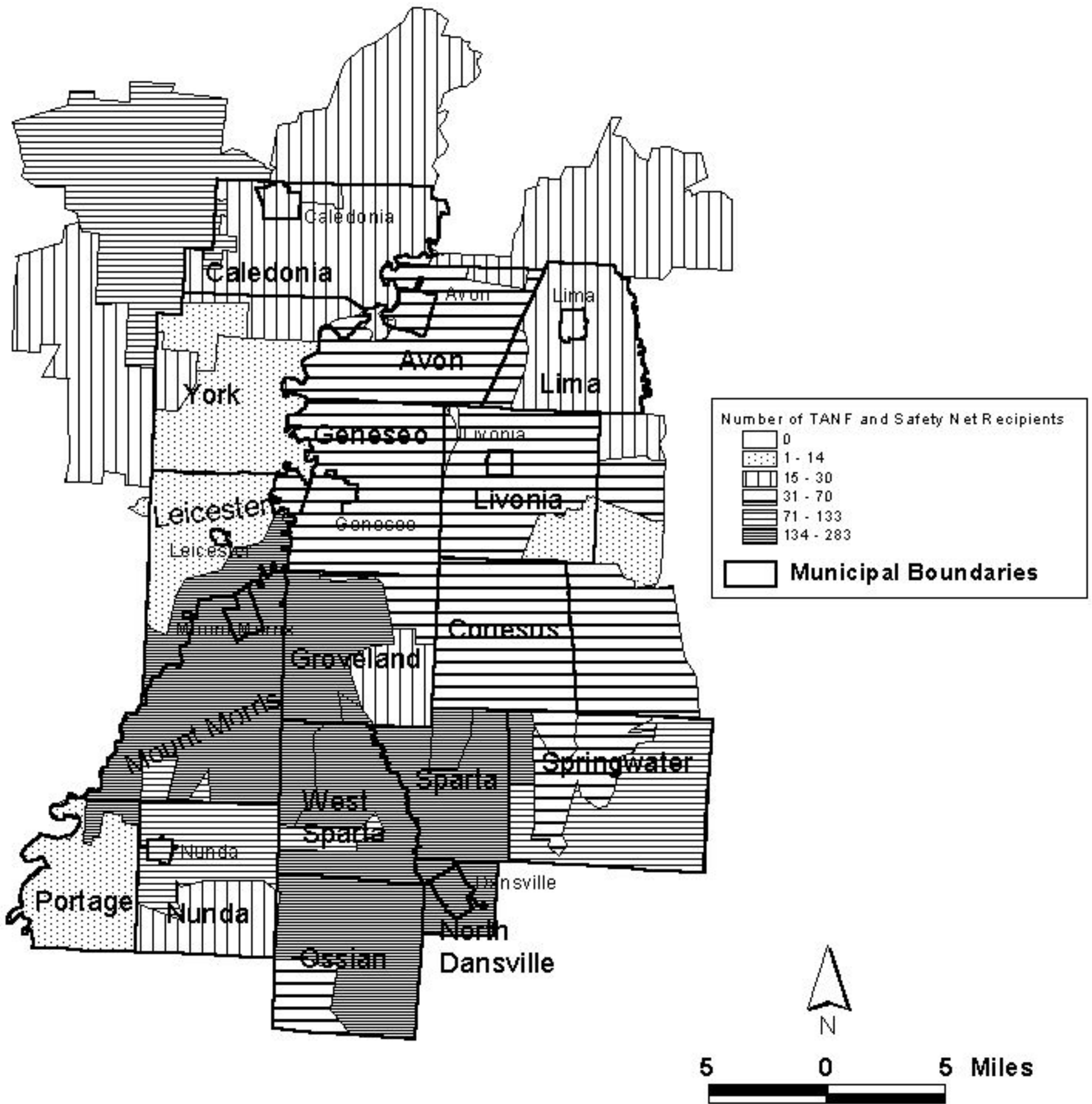
- Bryant & Stratton Business Institute's Henrietta Branch,
- Executrain of Rochester,
- Continental Dental Assistant School,
- IKON Office Solutions, and
- Ziff Davis.

Outside of Livingston and Monroe counties (and Alfred State in Allegany County), the remaining agencies used by the Livingston County ETD are GCC's main campus in Batavia and the Professional Driver Institute (Genesee County), Finger Lakes

Combined Livingston Area Transportation Service (LATS) Routes



Livingston County TANF and Safety Net Recipients by Zipcode - May 1998



Community College (Ontario County), and Steuben Allegany BOCES (Wyoming County).

The Livingston County Department of Social Services' *Employment Unit Plan for Welfare to Work* outlines a transportation policy that makes use of county provided transportation (outside that already provided by LATS) including mobile work crews and special considerations for those jobseekers residing in remote areas. The DSS also acknowledges that lack of transportation is no longer a reason for failure to comply with training requirements. Subsequently, a focus of the transportation policy included in the plan recognizes the need for jobseekers and the DSS Employment Unit Case Managers to work together to overcome barriers to transportation.

LATS routes and training sites used by the ETD to train and assess jobseekers are shown on Map 11. While LATS does not service every community every day, it may be sufficient for transporting ETD clients to weekly appointments without special scheduling measures by the ETD or DSS.

Employment Opportunities

Most of the commercial firms in Livingston County that may offer entry-level positions to jobseekers are located in the villages and along major routes. There is substantial development along US 20A across the towns and villages of Geneseo, Leicester, and Livonia. This is also the case along Route 5 in the northern portion of the county. There is more diffuse, but still substantial development along Routes 15 and 36 as well. Firms providing community service activities with potential openings for individuals with lower skill levels can also be found in these same areas. Commercial and community service firms with potential entry-level employment opportunities in Livingston County are displayed on Maps 12 and 13.

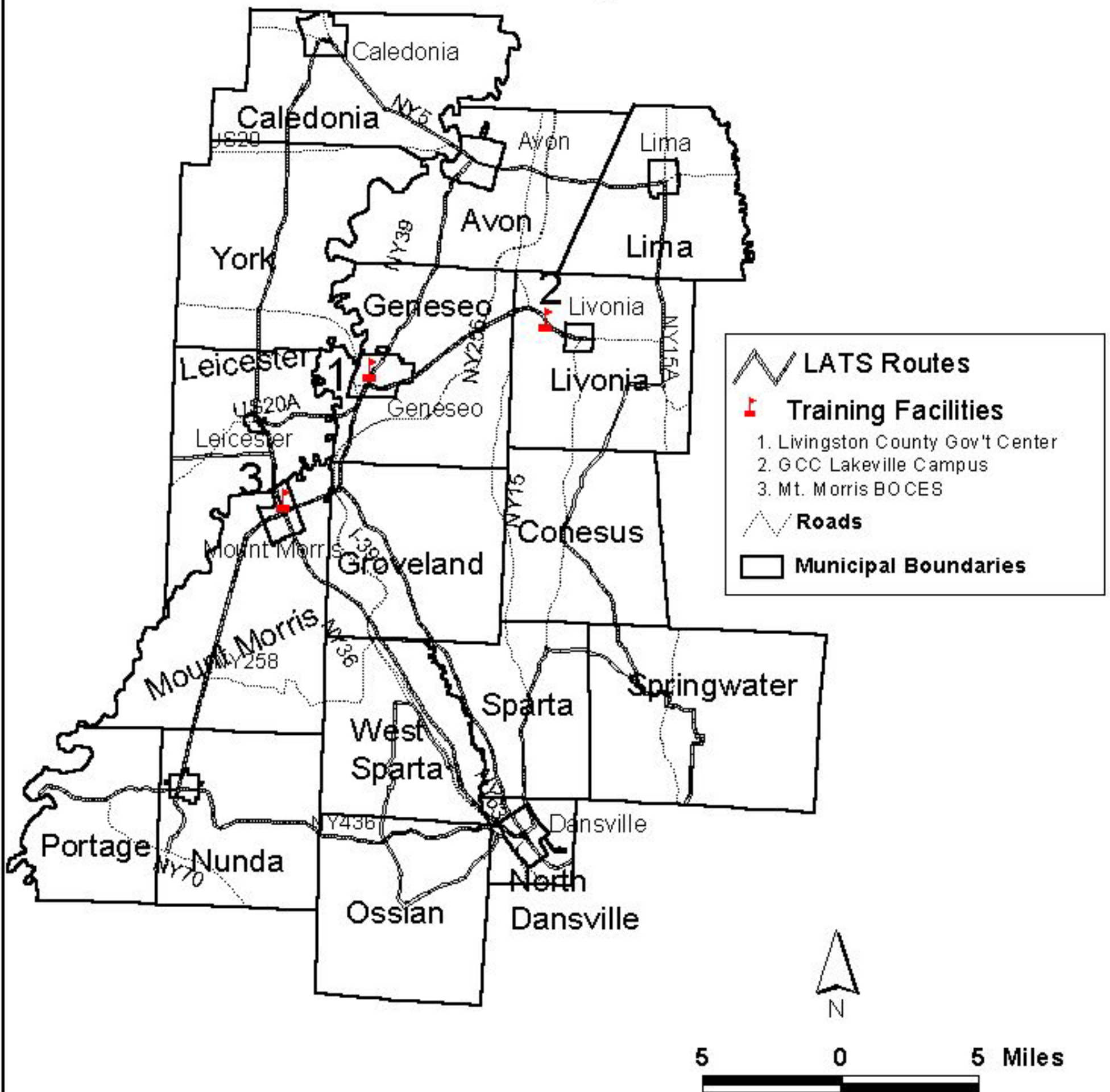
Conversations with the Livingston County Departments of Planning and Economic Development revealed where major growth areas were concentrated in the county, as well as more specific locales in each municipality that may yield entry-level positions for TANF recipients. According to the Department of Economic Development, over the next few years, the Interstate 390 (I-390) corridor between exits 9 and 10 will see a large amount of concentrated development. This includes the northern portion of Livingston County including the Town and Village of Avon, the Town and Village of Lima, the Town of Geneseo, and the northwest portion of the Town of Livonia. Growth in this area is expected to occur along Routes 5 & 20 running east and west and Route 15 heading north and south from Monroe County into the Town of Avon. The Crossroads Industrial Park off I-390 exit 10 in Avon and another industrial park off Exit 9 may be excellent leads for Livingston ETD clients. The Department of Planning also identified this Northeast quadrant of Livingston County bordering Monroe and Ontario counties as expectant of increased development. In addition, areas in Mount Morris and Dansville are also predicted to see further growth in the near future.

The Department of Planning provided detailed descriptions of growth areas, both major and minor, for each of the county's municipalities. The following is a list of the

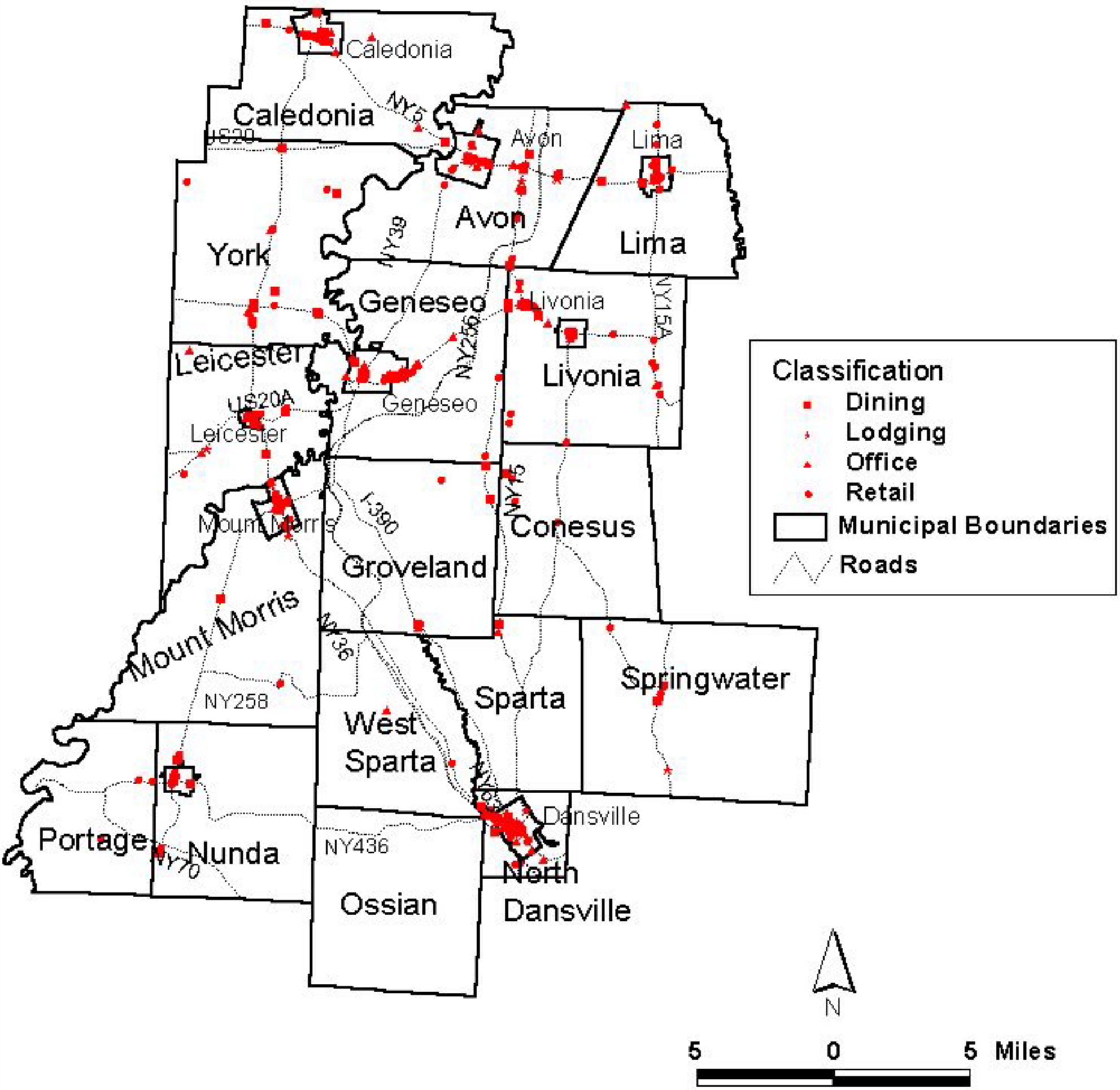
municipalities and a short description of where possible employment opportunities (actual and predicted) may exist in each one. These locations are shown on Map 14.

- Town and Village of Avon -Between the village and the town's eastern boundary along Routes 5 & 20. The Crossroads Industrial Park and other areas zoned for general business and light industry are located here. Inside the village, there is commercial development along Routes 5 & 20.
- Town and Village of Caledonia - There is mostly retail and commercial development with some land zoned industrial (light and heavy) on the town's northern and northeastern boundaries into Monroe and Genesee counties on Route 5. In addition, a small central business district exists in the village. This is also located along Route 5.
- Town of Conesus - Development exists throughout the town with only a minor business district in the Hamlet of Conesus along Route 15 between the ending and starting points of County Highways 56 and 71.
- Town and Village of Geneseo - The State University of New York (SUNY) at Geneseo, Livingston County government building, and assorted commercial development can be found in the village along US 20A and Routes 39 and 63. To the east of the village, there is potential commercial development along US 20A.
- Town of Groveland - The northwest corner of the town contains a new salt mine shaft and surface operations. To the southwest are the Groveland Correctional Facilities, possible places of employment in a growing entry-level industry (as determined by the NYS DoL).
- Town and Village of Leicester - There is very little growth expected here with only a small central business district in the village.
- Town and Village of Lima - Inside the village, commercial and industrial development (existing and proposed) is concentrated along Routes 15A and 5 & 20. For the town, employment opportunities for TANF recipients are located to the north and east of the village along the aforementioned routes.
- Town and Village of Livonia - The Hamlet of Lakeville, in the northwest corner of the town, does not contain any large employers, but there is some commercial and industrial development and this area is expected to see increased development in the future. Also in this area is the GCC satellite campus, another possible source of entry-level positions. The hamlets of Livonia Center and Hemlock in the middle eastern portion of the county along US 20A running east and west, as well as south on Route 15A (through Hemlock), have some smaller commercial development. A

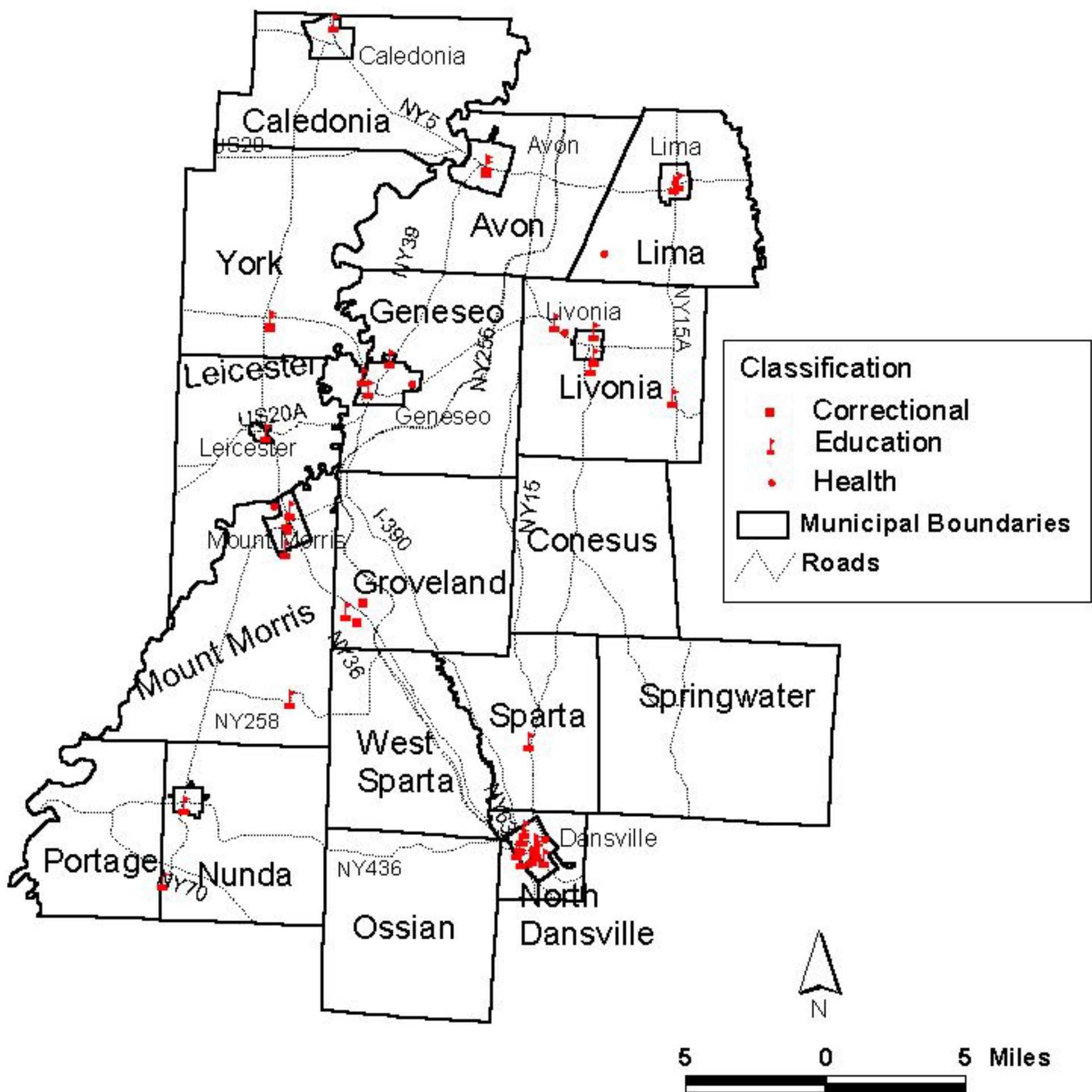
LATS Routes and Sites Used by the Livingston County Department of Employment and Training to Train and Assess Disadvantaged Job Seekers



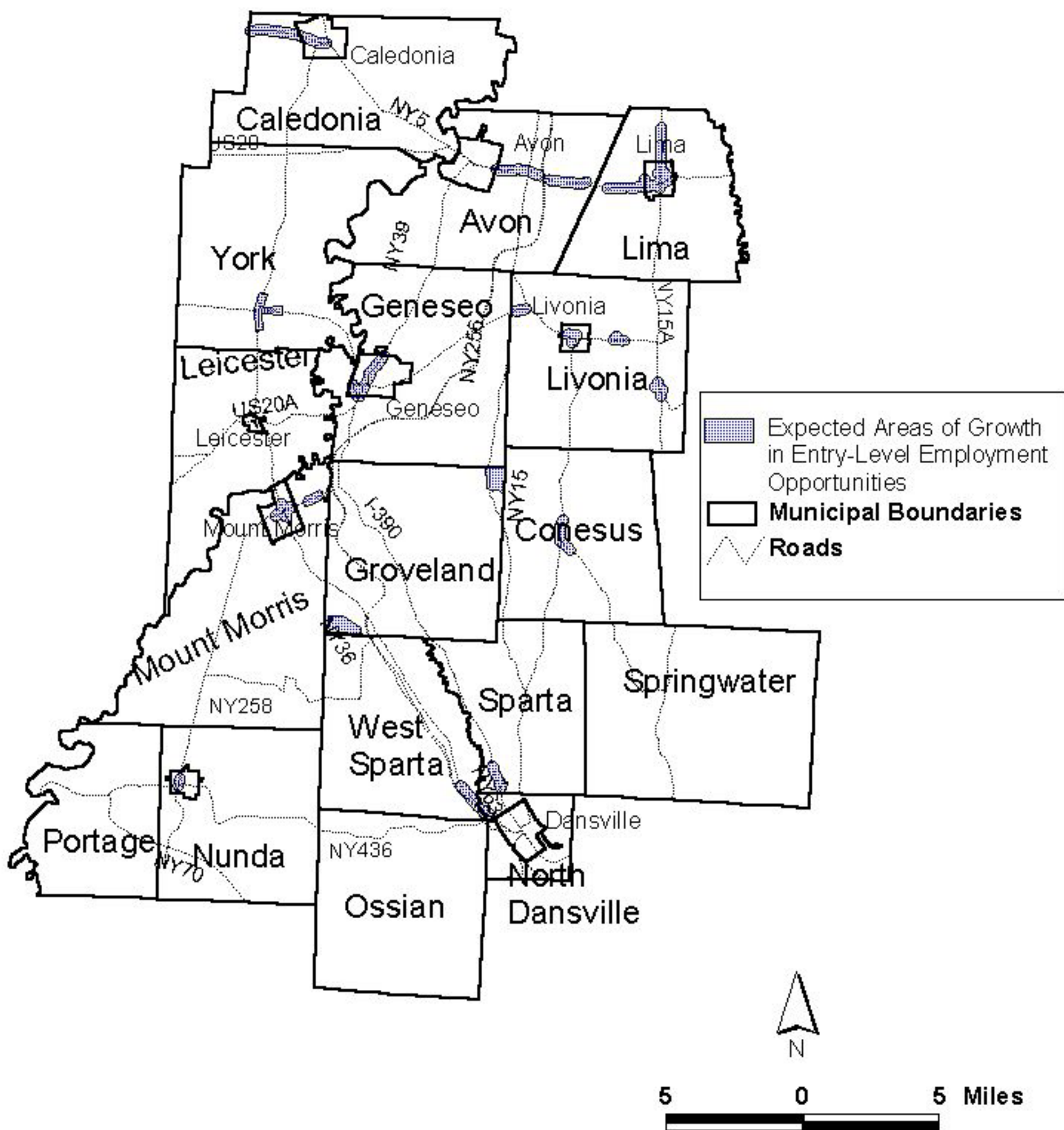
Commercial Firms with Potential Entry-Level Employment Opportunities in Livingston County



Community Service Firms with Potential Entry-Level Employment Opportunities in Livingston County



Expected Areas of Growth in Entry-Level Employment Opportunities in Livingston County



CBD exists in the village where Routes US 20A and 15A run together.

- Town and Village of Mount Morris - A CBD exists in the village expanding from the intersection of Routes 408 and 36. To the east of the village, there is opportunity for growth along Route 408.
- Town of North Dansville and Village of Dansville - In North Dansville, development is located along Route 36 west of the village. Foster Wheeler, one of the largest employers in Livingston County, is located in the northwest corner of the town. The Village of Dansville is home to Noyes Hospital and Forbes Products Corp.: two other major employers in the county. The Village of Dansville has a prominent CBD with commercial and retail development.
- Town and Village of Nunda - Most of the industrial and commercial development can be found in the eastern part of the village. This includes a mix of commercial and light industrial businesses along Route 408.
- Town of Sparta – An industrial district is located in the southwest corner and adjoins the Dansville Industrial Park along Route 63.
- Town of York – There is development in Greigsville along Route 36 and Route 63 heading towards Geneseo. A former salt mine shaft is present and there is both commercial and industrial development.
- Towns of Ossian, Portage, Springwater, and West Sparta - Development in these towns is limited to sporadic commercial development and in a small area along Route 36 in the southeast portion of West Sparta.

These areas of expected growth in Livingston County that may provide employment opportunities to TANF and Safety Net recipients are shown in Map 14.

A list of employers who have hired Livingston County welfare recipients was provided by the Livingston County ETD. The majority of employers are engaged in commercial and retail (service producing) industries. A number of educational and health care (community service) facilities and organizations are also present on the list. The list also included several industrial (manufacturing and distribution) firms. Comstock/Seneca Foods, Consler, Crossman Corporation, Forbes Products, Foster Wheeler, Harris Digital, Hickey-Freeman, and Kraft General Foods were some of the larger industrial firms in Livingston County, and the surrounding counties of Monroe and Ontario, that have hired Livingston County jobseekers on temporary assistance since January of 1995. According to the list, the vast majority (over 90%) of firms that have hired welfare recipients from Livingston County hired less than five as of October 1, 1998. Of the businesses that have hired more than five Livingston County welfare recipients, four were industrial firms, three were supermarkets, and two employers each from the health care, education, fast food, retail, gas station/mini market, and temporary employment fields were present.

Child Care Centers

The Village of Dansville contains the most licensed child care centers with others located in the villages of Avon, Geneseo, Lima, Livonia, and Mount Morris and the Town of Leicester. Map 15 shows the location of licensed child care facilities in Livingston County.

Licensed Child Care Centers in Livingston County

