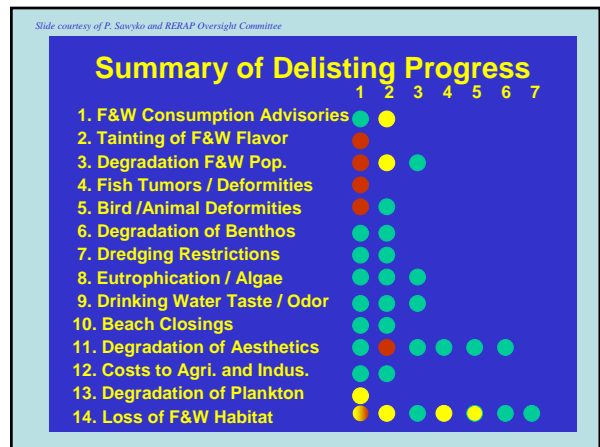
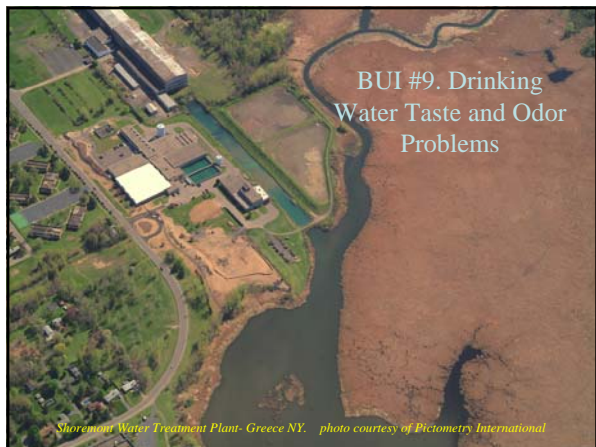
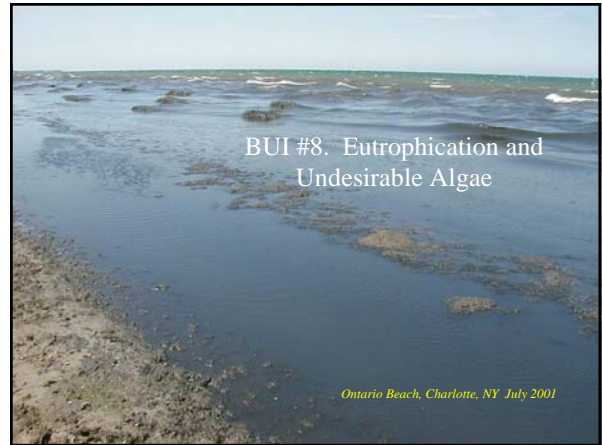
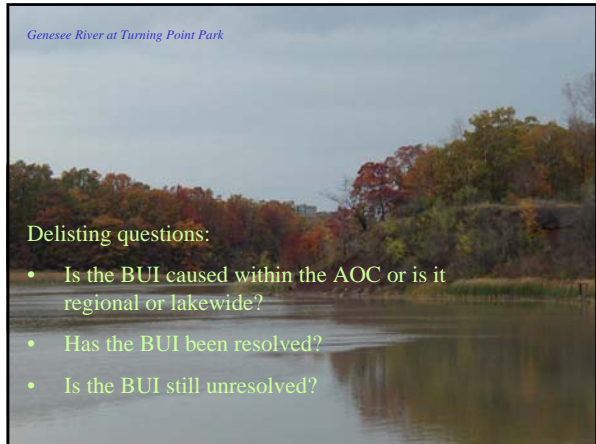


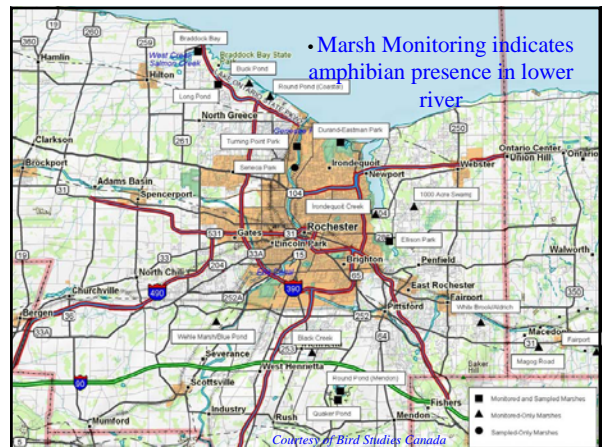
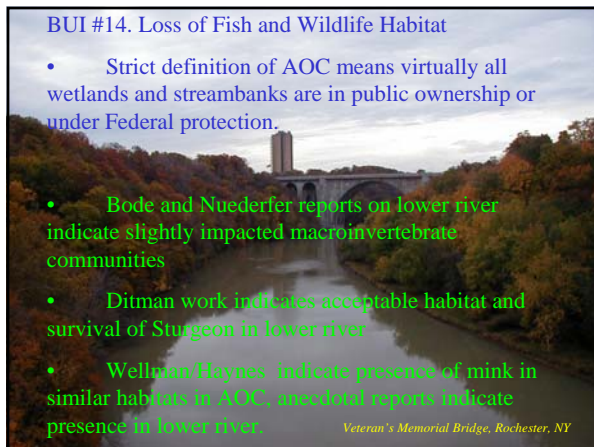
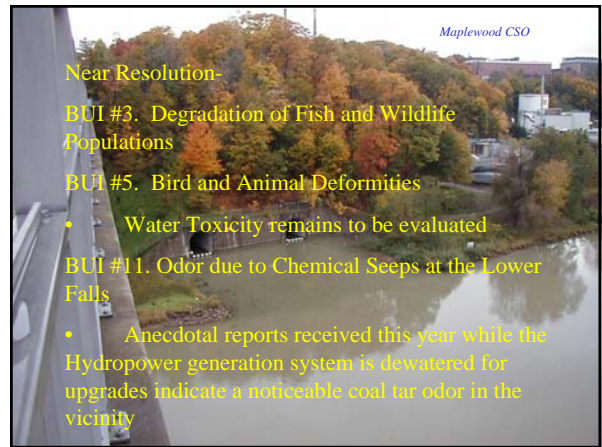
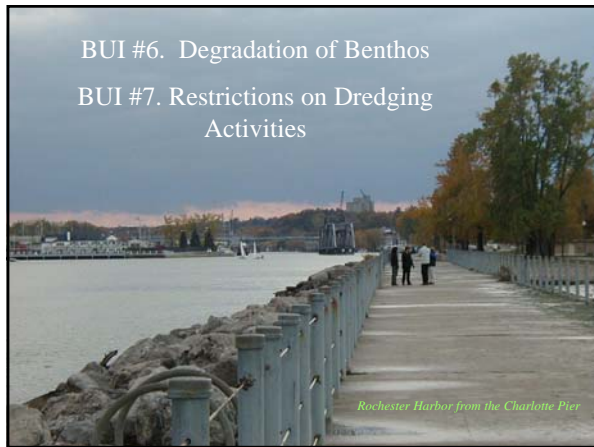
### Milestones:

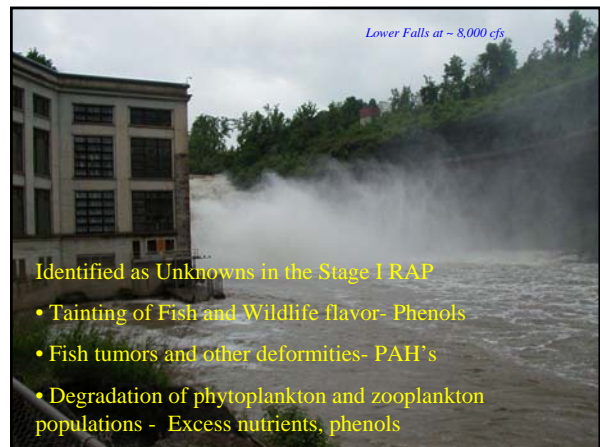
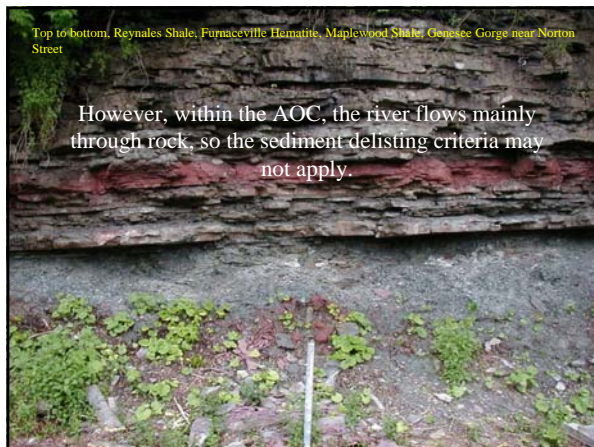
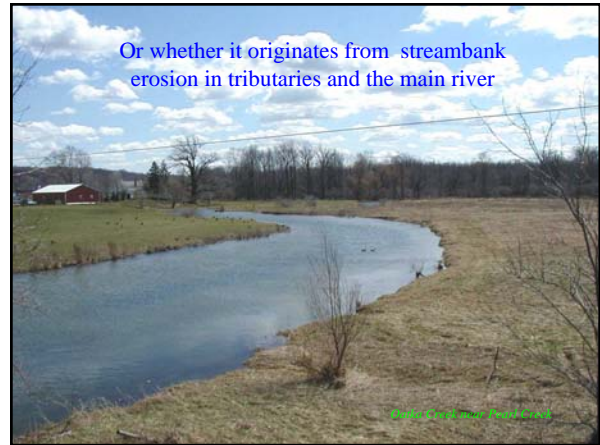
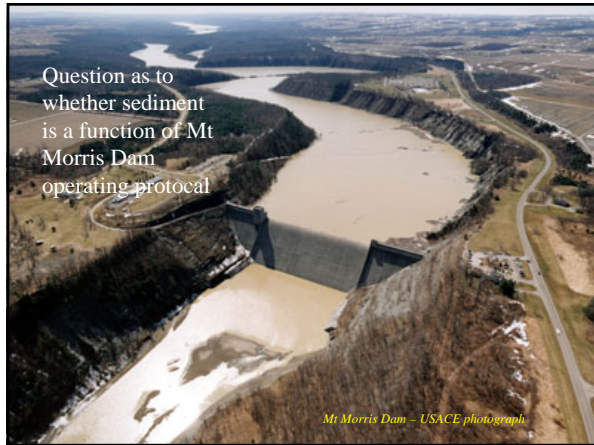
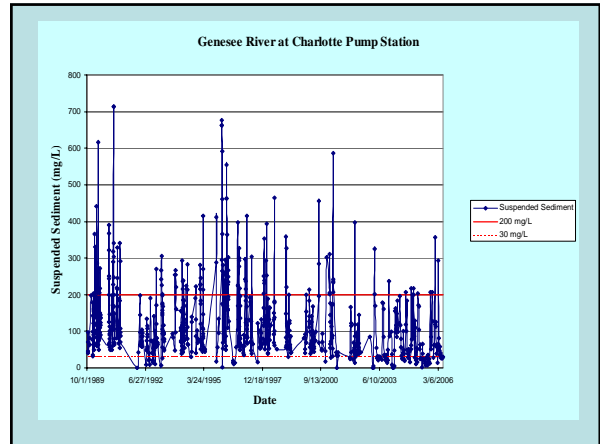
- August 1993:** Stage I RAP document completed
- September 1997:** Monroe County publishes final Stage II RAP document.
- December 2002:** 2002 RAP Addendum published; delisting criteria and monitoring methods approved by Water Quality Coordinating Committee and Water Quality Management Agency.
- March 2004:** Remedial Action Plan Oversight Committee reinstated; discussion begun on ways to get monitoring recommended for evaluating beneficial use impairments.
- February 2006:** Public meeting on status, and to solicit input on remedial measures and ranking.

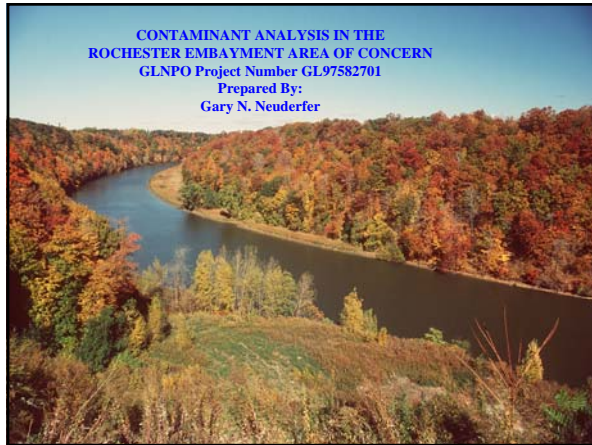
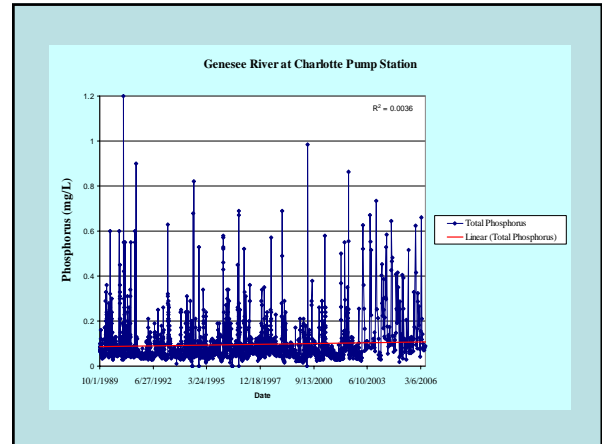
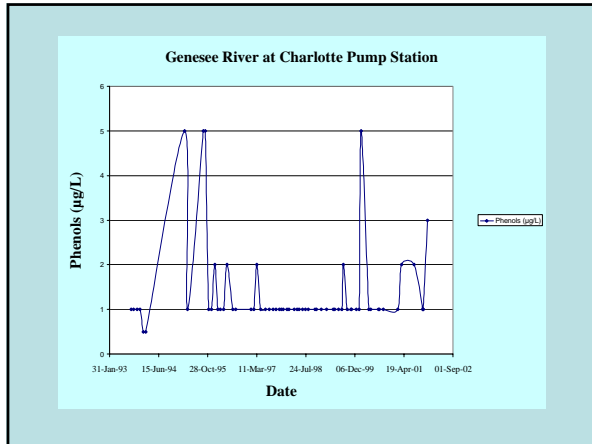
*Rochester Embayment of Lake Ontario - photo by V. Krishnamurthy*



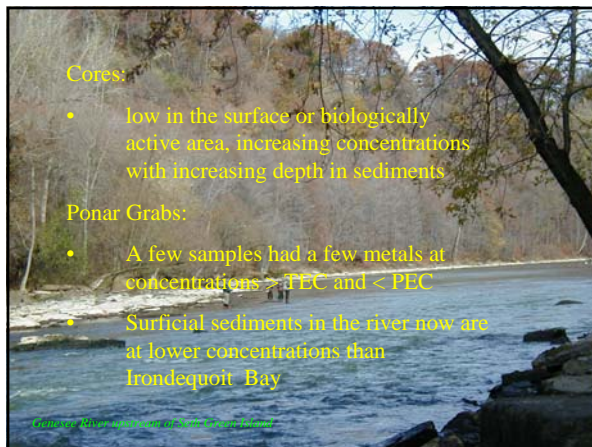








**CONTAMINANT ANALYSIS IN THE  
ROCHESTER EMBAYMENT AREA OF CONCERN**  
GLNPO Project Number GL97582701  
Prepared By:  
Gary N. Neuderfer



**Cores:**

- low in the surface or biologically active area, increasing concentrations with increasing depth in sediments

**Ponar Grabs:**

- A few samples had a few metals at concentrations  $>$  TEC and  $<$  PEC
- Surficial sediments in the river now are at lower concentrations than Irondequoit Bay

*Genesee River, Georgia below Lissen Falls*



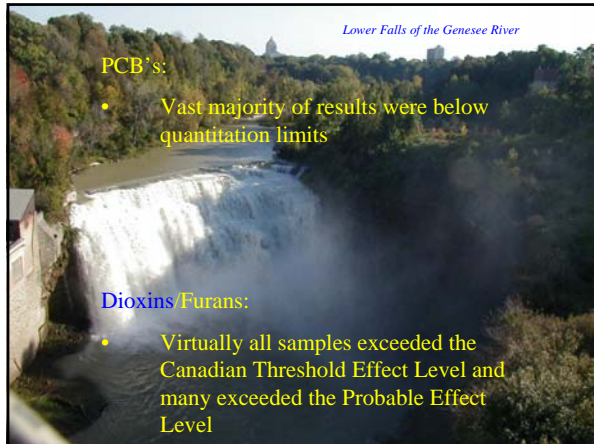
**Pesticides:**

- Vast majority of results were below quantitation limits

**PAH's:**

- a few  $>$  TEC  $<$  PEC, surprising result for the lower river considering the coal tar issues.

*Genesee River, Georgia below Lissen Falls*



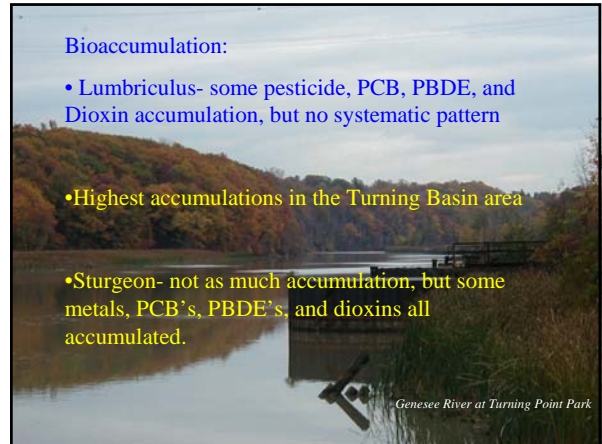
*Lower Falls of the Genesee River*

**PCB's:**

- Vast majority of results were below quantitation limits

**Dioxins/Furans:**

- Virtually all samples exceeded the Canadian Threshold Effect Level and many exceeded the Probable Effect Level



**Bioaccumulation:**

- Lumbriculus- some pesticide, PCB, PBDE, and Dioxin accumulation, but no systematic pattern
- Highest accumulations in the Turning Basin area
- Sturgeon- not as much accumulation, but some metals, PCB's, PBDE's, and dioxins all accumulated.

*Genesee River at Turning Point Park*



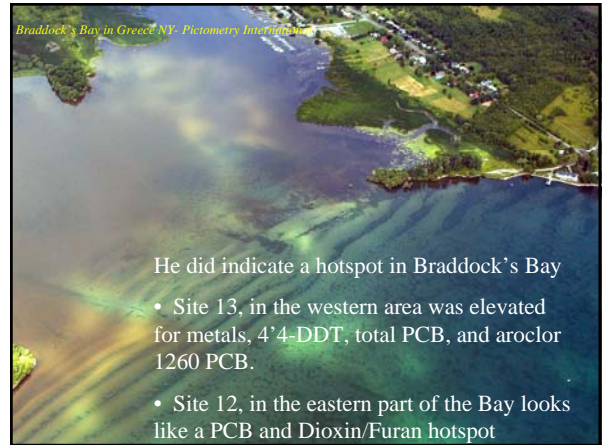
**Macroinvertebrate Sites:**

- 2 of 5 slightly impacted, others moderately impacted
- Dominated by chironomids, mollusks and oligochaetes

**Sediment Toxicity:**

- results indicate no serious concerns at Rochester AOC sites tested

*Lower Falls at ~8,000 cfs*



*Braddock's Bay in Greece, NY. Picometry, December 2004*

He did indicate a hotspot in Braddock's Bay

- Site 13, in the western area was elevated for metals, 4'-4-DDT, total PCB, and aroclor 1260 PCB.
- Site 12, in the eastern part of the Bay looks like a PCB and Dioxin/Furan hotspot