

Write down one question or one thing that you want to know about recreation in the Genesee River Water Shed

Letchworth Gorge



Kayaking Letchworth Gorge



Canoeing Letchworth Gorge





Access Point	River Mile	Distance in miles from one access to the next	Elevation in feet from DEC map
Lake Ontario	0.00	Begins at north end of pier	247
Charlotte/ Port of Rochester	0.75	0.75	
Turning Point Park	2.5	1.75	
Seth Green Island/ Lower Falls	6.0	3.5	
Downtown Rochester	6.0-8.0	No boating due to high falls	513-247
Corn Hill	8.0	Dam to control Erie Canal	
Genesee Waterways Center	10.5	2.5	513
Ballantyne Bridge	14.00	3.5	
Scottsville	21	7.5	
Industry	23.5	3.5	
Avon	35.25	11.75	
York	44	8.75	
Genesee Rt 63	52.5	8.5	550 feet
Genesee Rt 39	60.0	7.5	
Mt Morris	65.5	5.5	580
Letchworth State Park	66-87	No boating due to high falls except in designated areas with registration	585
Portageville	87	Not applicable	1080

Portageville	87	Not applicable	1080
Whiskey Bridge/ River Road	89.25	2.25	
Fillmore	100	7.0	
Caneadea	107	6.5	
Belfast	113.5	5.0	
Near Angella	118.5	8.0	
Belmont (dam)	126.6	5.5	
Scio	132	5.25	
Wellsville (5 low dams)	137.25	Boating within town difficult, concrete channel	
Following sections will be shallow except in Spring high water:	River mile	River distance from previous access	
Stannards Corners	140.8	3.55 from Wellsville	
Shongo, NY	146	5.2	
Genesee, PA	156.5	10.5	2500 feet





Geneseo Central School



Earthwise Club



Dishmill Creek 7<sup>th</sup> Grade Science Class



Tree Classification



Geology  
Sedimentary Rocks



Insect Study

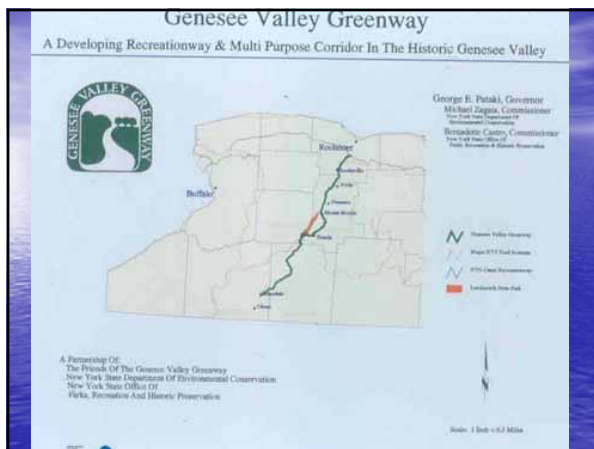
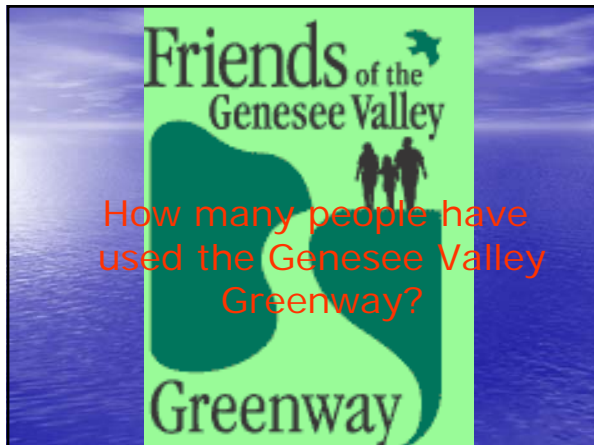
Ecology

How many people here?????

- Canoe?
- Sea kayak?
- Hike?
- Cross country ski?
- Bike?

How Many people have canoed on?

- The Genesee River?
- Hemlock or Candice Lakes?





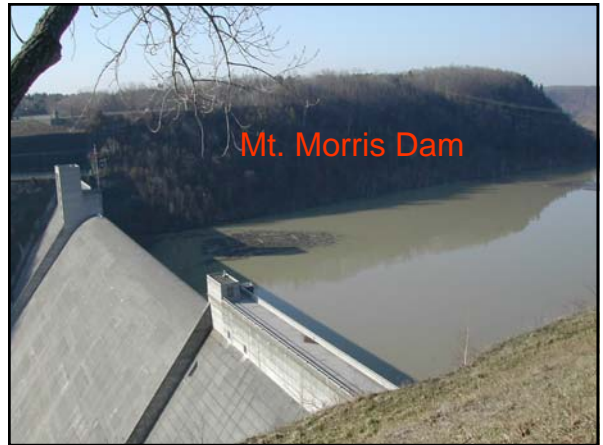
Middle School, grades 5-8 Science



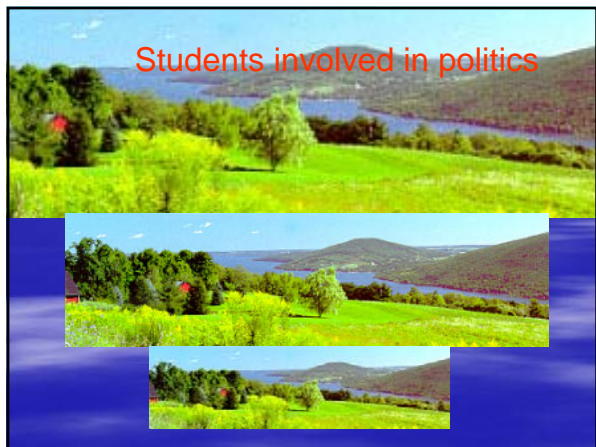
Life Science-  
Biology Classes



Environmental Science Classes



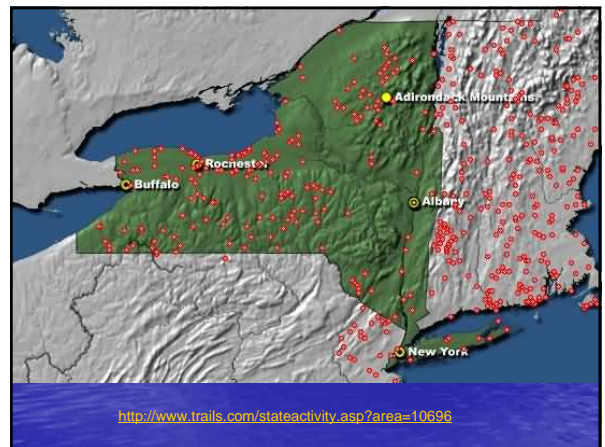
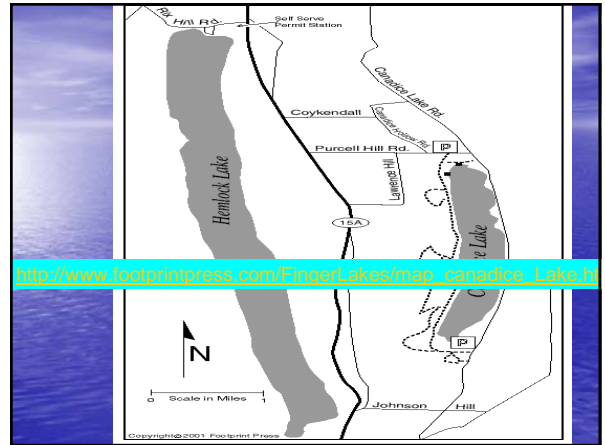
Mt. Morris Dam



Students involved in politics



Canadice Lake







Email me at  
[Scodese@Juno.com](mailto:Scodese@Juno.com)