

Restoring Rochester's Old Erie Canal

Thomas X. Grasso President, Canal Society of New York State
 President, Inland Waterways International
 Executive Director ADROC (ADvocates for the Restoration of ROchester's Canal)



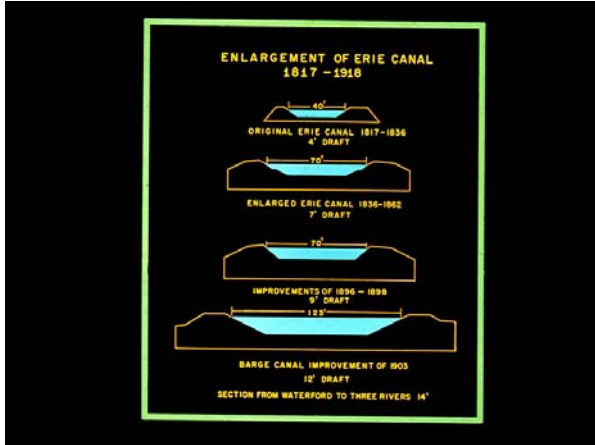
From the Albert B. Stone Negatives Collection, Rochester Museum & Science Center, Rochester, NY



Looking North from Griffith Street Bridge c.1910 and Schillner Map (c.1896) of same



Ms. DAY PECKINPAUGH Last regularly scheduled voyage -Sept. 1994
 Just west of Oneida Lake



Erie Barge Canal above Lock 2 Waterford, NY—looking west—1990



Canals as Nature - Canal du Midi - south of France



Macclesfield Canal, England



Briare Canal Aqueduct Over the Loire River, France



Lutzelbourg on the Rhine and Marne Canal Alsace-Lorraine District, France

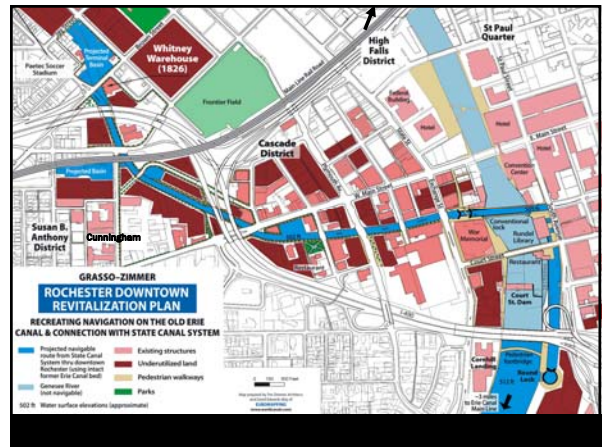
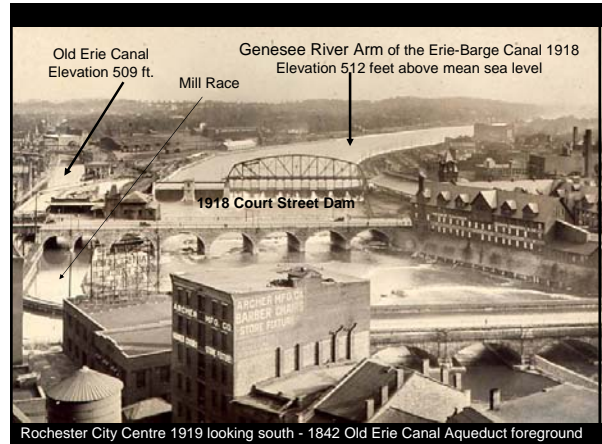
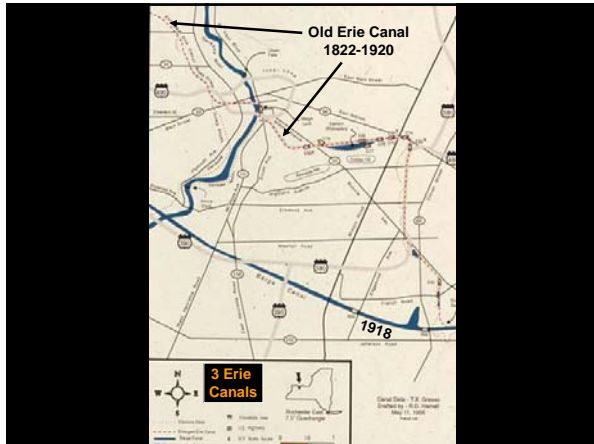


Peak Forest Canal, England



Peak Forest Canal, England

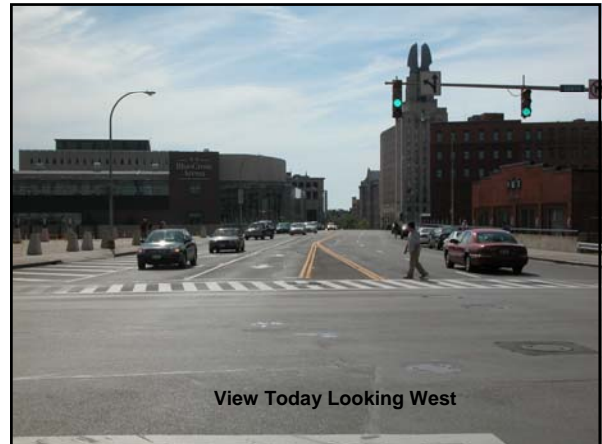






Looking West Through Aqueduct Across the Genesee River

rof00036.jpg Rochester Public Library Local History Division



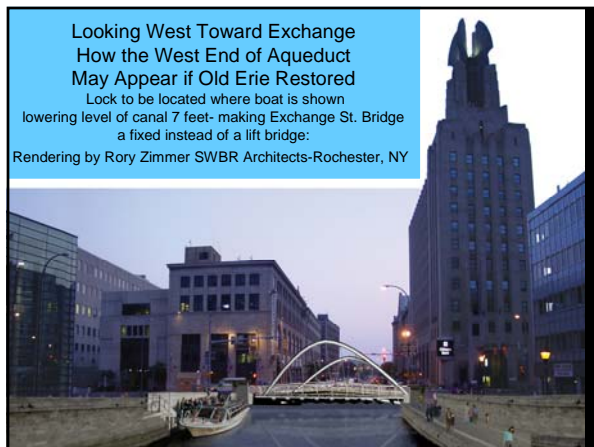
View Today Looking West



View Through Aqueduct Today Looking West
Supports For Broad St. -- down center line of old aqueduct

**Preliminary Draft Engineering Drawings Through Aqueduct
Present-day (left) and proposed restored (right) - 12-06**

Bergmann Associates – Architects, Engineers, Planners & Surveyors- Rochester, NY



Looking West Toward Exchange
How the West End of Aqueduct
May Appear if Old Erie Restored

Lock to be located where boat is shown
lowering level of canal 7 feet- making Exchange St. Bridge
a fixed instead of a lift bridge:

Rendering by Rory Zimmer SWBR Architects-Rochester, NY



Looking East To
Washington St. Bridge
About 1905-
Note Washington Building

From the Albert R. Stone Negative Collection, Rochester Museum & Science Center, Rochester, N.Y.



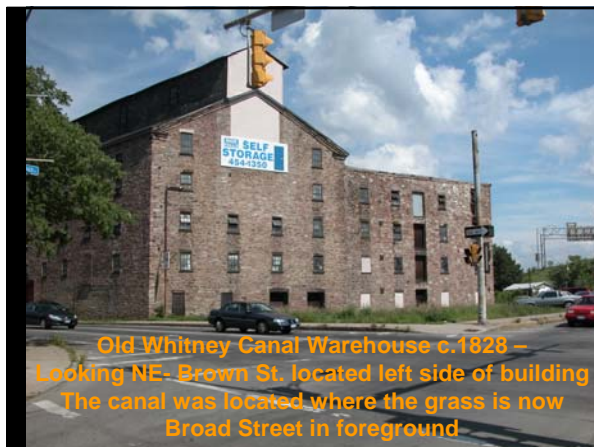
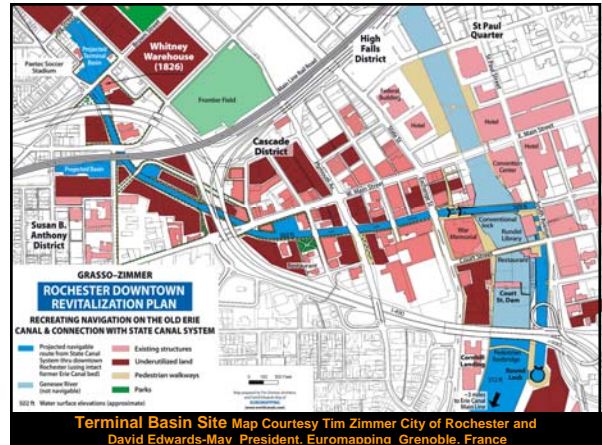
Similar View Today
Broad Street is a "roof" over canal below



Restaurant -
Jonathan Child House



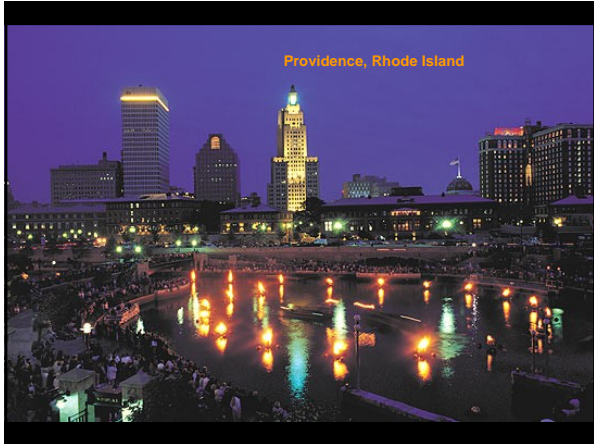
What It Could Resemble-Regents Canal
London – September 2005



Old Whitney Canal Warehouse c.1828 –
Looking NE- Brown St. located left side of building
The canal was located where the grass is now
Broad Street in foreground



Looking north from Brown Street at
Terminal Basin Site—Oak Street on right Jay Street in distance
Brick building in distance-- Rocky's Italian Restaurant
New soccer (football) stadium 1 block beyond





**Gas Street Basin
Birmingham, England**



Birmingham, England



Birmingham, England



Bricktown Canal, Oklahoma City