

Appendices

- Appendix A: Number, Square Footage and Value of Permits Issued for New Residential Buildings (2006)
- Appendix B: Number, Square Footage and Value of Permits Issued for New Industrial Buildings (2006)
- Appendix C: Number, Square Footage and Value of Permits Issued for New Commercial Buildings (2006)
- Appendix D: Number, Square Footage and Value of Permits Issued for New Community Service Buildings (2006)
- Appendix E: Number, Square Footage and Value of Permits Issued for New Buildings Not Elsewhere Classified (2006)
- Appendix F: Number and type of Buildings Demolished (2006)
- Appendix G: Number of Permits Issued for New Residential Units and Industrial, Commercial and Community Service Buildings (2004 – 2006)
- Appendix H: Transportation Management Area Time Series Analysis Data

Appendix A

Number, Square Footage and Value of Permits Issued for New Residential Buildings (2006)

Number, Square Footage, and Value of Permits Issued for New Residential Buildings (2006)

Genesee County

Municipality	Single Family	Total Square Feet	Total Value (\$)	Two Family	Total Square Feet	Total Value (\$)	Three or Four Family (# of Units)	Total Square Feet	Total Value (\$)	Five or More Family (# of Units)	Total Square Feet	Total Value (\$)	Mnfctd/ Mobile Homes	Total Square Feet	Total Value (\$)
Alabama	6	106,616	705,000	-			-			-			-		
Alexander	DNA														
Alexander (Village)	-			-			-			-			-		
Batavia (City)	4	8,309	495,000	-			-			-			-		
Batavia	DNA														
Bergen	2			-			-			-			2		
Bergen (Village)	-			-			-			-			-		
Bethany	-			-			-			-			1	1,200	40,000
Byron	5			-			-			-			3		
Corfu (Village)	-			-			-			-			-		
Darien	7	14,261	1,094,000	-			-			-			-		
Elba	-			-			-			-			1	1,200	66,000
Elba (Village)	-			-			-			-			-		
LeRoy	9	18,793	1,851,324	-			-			-			1	924	10,000
LeRoy (Village)	1	1,540	100,000	-			-			-			1	980	12,000
Oakfield	1	2,586	235,000	-			-			-			-		
Oakfield (Village)	DNA														
Pavilion	DNA	20,888	1,497,000	-			-			-			-		
Pembroke	9	17,608	1,325,000	-			-			-			-		
Stafford	2			-			-			-			3		

DNA = Data not available.

Source: Municipal Representatives, 2007

Number, Square Footage, and Value of Permits Issued for New Residential Buildings (2006)

Livingston County

Municipality	Single Family	Total Square Feet	Total Value (\$)	Two Family	Total Square Feet	Total Value (\$)	Three or Four Family (# of Units)	Total Square Feet	Total Value (\$)	Five or More Family (# of Units)	Total Square Feet	Total Value (\$)	Mnfctd/ Mobile Homes	Total Square Feet	Total Value (\$)
Avon	23	DNA	2,273,000	-			-			-			5	5,748	166,500
Avon (Village)	9	13,198	1,258,950	-			-			-			-		
Caledonia	3	4,244	307,990	-			-			-			1	DNA	10,000
Caledonia (Village)	-			-			-			-			-		
Conesus	2	3,000	500,000	-			-			-			6	8,000	690,000
Dansville (Village)	2	4,010	320,000	-			-			-			-		
Geneseo	5	9,874	995,000	2	2,880	162,000	-			-			4	6,318	355,000
Geneseo (Village)	8	20,291	1,855,500	-			-			-			-		
Groveland	5	6,800	160,000	-			-			-			-		
Leicester	3	7,935	596,000	-			-			-			2	3,528	56,000
Leicester (Village)	DNA														
Lima	8	15,967	1,382,000	-			-			-			1	1,152	23,000
Lima (Village)	2	3,225	270,000	-			-			-			-		
Livonia	18	36,000	3,784,471	-			-			-			8	9,600	211,900
Livonia (Village)	DNA														
Mount Morris	1	1,296	102,000	-			-			-			-		
Mount Morris (Village)	1	1,920	170,000	-			-			-			-		
North Dansville	-			-			-			-			1	1,150	70,000
Nunda	5	6,104	232,400	-			-			-			2	2,976	120,000
Nunda (Village)	-			-			-			-			-		
Ossian	3	6,535	244,000	-			-			-			4	6,508	420,000
Portage	4	6,687	545,000	-			-			-			4	4,360	210,000
Sparta	DNA														
Springwater	DNA														
West Sparta	-			-			-			-			3	3,200	120,000
York	5	14,165	1,366,395	-			-			-			2	2,931	222,000

DNA = Data not available.

Source: Municipal Representatives, 2007

Number, Square Footage, and Value of Permits Issued for New Residential Buildings (2006)

Monroe County

Municipality	Single Family	Total Square Feet	Total Value (\$)	Two Family	Total Square Feet	Total Value (\$)	Three or Four Family (# of Units)	Total Square Feet	Total Value (\$)	Five or More Family (# of Units)	Total Square Feet	Total Value (\$)	Mnfctd/ Mobile Homes	Total Square Feet	Total Value (\$)	
Brighton	6	45,619	4,410,000	-			2(8)	9,216	535,000	2(81)	120,872	14,300,000	-			
Brockport (Village)	4	5,170	670,447	1	2,400	9,500	-			-			-			
Chili	108	DNA	22,471,775	DNA*												
Churchville (Village)	5	12,948	936,000	-			-			1(33)	15,800	3,600,000	-			
Clarkson	18	31,800	2,802,000	-			-			-			-			
East Rochester (T/V)	-			-			3(9)	21,600	1,152,000	-			-			
Fairport (Village)	-			-			-			-			-			
Gates	19	27,720	2,501,500	-			-			-			-			
Greece	156	DNA	26,227,445	14	DNA	1,475,000	-			-			-			
Hamlin	11	DNA	2,298,900	-			-			-			4	DNA	130,000	
Henrietta	176	337,616	26,426,695	-			-			-			-			
Hilton (Village)	17	23,128	2,410,400	-			-			1(69)	64,153	5,000,000	-			
Honeoye Falls (Village)	-			5	12,600	980,000	-			-			-			
Irondequoit	9	12,300	1,329,000	-			-			-			-			
Mendon	22	120,500	6,428,000	-			-			-			-			
Ogden	54	DNA	10,244,222	1	DNA	265,000	1(4)	DNA	948,000	-			-			
Parma	44	96,624	7,879,325	-			-			-			-			
Penfield	92	DNA	26,091,000	16 townhouses (units unspecified) at 3,390,000										2	DNA	77,000
Perinton	52	31,867	3,980,000	-			-			-			-			
Pittsford	57	131,508	19,658,700	-			-			-			-			
Pittsford (Village)	-			-			-			-			-			
Riga	7	DNA	DNA	-			-			-			-			
Rochester (City)	45	DNA	2,532,000	-			-			1(32)	DNA	3,600,000	-			
Rush	6	DNA	DNA	-			-			-			-			
Scottsville (Village)	2	3,643	210,000	-			-			-			-			
Spencerport (Village)	1	3,800	400,000	-			-			-			-			
Sweden	7	19,090	1,525,000	-			-			-			-			
Webster	154	352,534	31,175,361	-			-			5(33)	41,803	2,999,000	-			
Webster (Village)	-			-			1(4)	5,300	205,000	2(16)	21,200	820,000	-			
Wheatland	4	11,045	627,500	-			-			-			-			

DNA = Data not available.

* The Town of Chili did not specify different types of housing units.

Source: Municipal Representatives, 2007

Number, Square Footage, and Value of Permits Issued for New Residential Buildings (2006)

Ontario County

Municipality	Single Family	Total Square Feet	Total Value (\$)	Two Family	Total Square Feet	Total Value (\$)	Three or Four Family (# of Units)	Total Square Feet	Total Value (\$)	Five or More Family (# of Units)	Total Square Feet	Total Value (\$)	Mnfctd/ Mobile Homes	Total Square Feet	Total Value (\$)
Bloomfield (Village)	-			-			-			-			-		
Bristol	6	14,409	1,126,000	-			-			-			4	7,849	398,000
Canadice	6	9,867	767,300	-			-			-			2	2,019	82,000
Canandaigua (City)	7	15,117	853,000	-			-			-			-		
Canandaigua	102	326,254	DNA	-			-			8(64)	65,527	DNA	4	5,558	DNA
Clifton Springs (Village)	-			-			-			-			-		
East Bloomfield	10	40,217	2,027,000	-			-			-			-		
Farmington	57	DNA	6,958,950	-			8(32)	DNA	2,900,000	1(24)	DNA	1,764,124	-		
Geneva (City)	1	1,120	80,000	-			-			-			-		
Geneva	10	DNA	2,505,000	-			-			-			-		
Gorham	30	DNA	6,00,000	-			-			-			-		
Hopewell	7	13,300	1,065,000	-			-			-			6	6,884	112,000
Manchester	23	37,000	915,500	-			-			-			-		
Manchester (Village)	2	2,600	231,000	-			-			-			-		
Naples	3	5,651	330,000	-			-			-			4	5,306	214,000
Naples (Village)	-			-			-			-			1	840	2,500
Phelps	7	10,772	1,011,000	-			-			-			4	3,820	22,200
Phelps (Village)	-			-			-			-			-		
Richmond	11	20,607	1,903,000	-			1(4)	2,000	150,000	-			4	3,920	36,000
Rushville (Village)	-			-			-			-			-		
Seneca	5	8,500	780,000	-			-			-			2	2,800	120,000
Shortsville (Village)	1	1,450	68,000	-			-			-			-		
South Bristol	14	35,925	3,338,925	-			-			-			-		
Victor	65	296,338	21,552,900	1	11,759	550,000	-			-			11	DNA	859,600
Victor (Village)	8			-			-		-		-			-	
West Bloomfield	3	6,260	450,000	-			-			-			-		

DNA = Data not available.

Source: Municipal Representatives, 2007

Number, Square Footage, and Value of Permits Issued for New Residential Buildings (2006)

Orleans County

Municipality	Single Family	Total Square Feet	Total Value (\$)	Two Family	Total Square Feet	Total Value (\$)	Three or Four Family (# of Units)	Total Square Feet	Total Value (\$)	Five or More Family (# of Units)	Total Square Feet	Total Value (\$)	Mnfctd/ Mobile Homes	Total Square Feet	Total Value (\$)
Albion	1	2,441	158,500	-			-			-			-		
Albion (Village)	1	1,188	72,000	-			-			-			2	DNA	55,200
Barre	3	6,704	DNA	-			-			-			-		
Carlton	6	10,477	1,200,000	-			-			-			5	7,260	400,000
Clarendon	DNA														
Gaines	2	53,043	500,000	-			-			-			2	2,400	189,000
Holley (Village)	DNA														
Kendall	3	3,780	223,000	-			-			-			-		
Lyndonville (Village)	-			-			-			-			-		
Medina (Village)	2	4,532	270,000	-			-			-			3	2,400	106,800
Murray	DNA														
Ridgeway	1			-			-			-			3	DNA	DNA
Shelby	4	7,888	482,000	-			-			-			-		
Yates	5	9,378	1,007,000	-			-			-			1	1,188	70,000

DNA = Data not available.

Source: Municipal Representatives, 2007

Number, Square Footage, and Value of Permits Issued for New Residential Buildings (2006)

Seneca County

Municipality	Single Family	Total Square Feet	Total Value (\$)	Two Family	Total Square Feet	Total Value (\$)	Three or Four Family (# of Units)	Total Square Feet	Total Value (\$)	Five or More Family (# of Units)	Total Square Feet	Total Value (\$)	Mnfctd/ Mobile Homes	Total Square Feet	Total Value (\$)
Covert	9	DNA	1,445,500	-			-			-			3	DNA	135,000
Fayette	8	DNA	1,563,000	-			-			-			11	DNA	712,000
Interlaken (Village)	included with Town of Covert														
Junius	2	DNA	36,000	-			-			-			2	DNA	12,000
Lodi	9	DNA	710,000	-			-			-			5	DNA	22,700
Lodi (Village)	included with Town of Lodi														
Ovid	4	DNA	395,000	-			-			-			1	DNA	20,000
Ovid (Village)	included with Town of Ovid														
Romulus	8	DNA	1,091,775	-			-			-			3	DNA	133,900
Seneca Falls	5	DNA	855,000	1	DNA	60,000	-			-			3	DNA	75,900
Seneca Falls (Village)	5	DNA	630,000	-			-			-			3	DNA	22,000
Tyre	1	DNA	30,000	-			-			-			1	DNA	60,000
Varick	5	DNA	631,475	-			-			-			5	DNA	35,650
Waterloo	3	DNA	543,000	-			-			-			15	DNA	22,000
Waterloo (Village)	-		-	-			-			1(41)	DNA	4,300,000	1	DNA	146,000

DNA = Data not available.

Source: Seneca County Department of Economic Development & Planning, 2007

Number, Square Footage, and Value of Permits Issued for New Residential Buildings (2006)

Wayne County

Municipality	Single Family	Total Square Feet	Total Value (\$)	Two Family	Total Square Feet	Total Value (\$)	Three or Four Family (# of Units)	Total Square Feet	Total Value (\$)	Five or More Family (# of Units)	Total Square Feet	Total Value (\$)	Mnfctd/ Mobile Homes	Total Square Feet	Total Value (\$)
Arcadia	6	DNA	943,000	-			-			-			6	DNA	394,353
Butler	DNA														
Clyde (Village)	DNA														
Galen	-			-			-			-			3	3,752	123,280
Huron	12	22,971	2,213,000	-			-			-			-		
Lyons	DNA														
Lyons (Village)	DNA														
Macedon	12	21,489	1,997,000	3	6,929	625,000	-			-			-		
Macedon (Village)	-			-			-			-			-		
Marion	DNA														
Newark (Village)	3	4,458	304,000	-			-			-			-		
Ontario	40	87,788	6,736,060	-			-			-			2	DNA	36,000
Palmyra	5	8,450	829,000	-			-			-			9	9,850	465,000
Palmyra (Village)	-			-			-			-			-		
Red Creek (Village)	-			-			-			-			-		
Rose	4	5,948	DNA	-			-			-			2	2,882	DNA
Savannah	-			-			-			-			1	1,120	38,000
Sodus	10	13,673	1,239,000	-			-			-			2	2,032	59,000
Sodus (Village)	-			-			-			-			-		
Sodus Point (Village)	1	1,904	226,000	-			-			-			-		
Walworth	DNA														
Williamson	DNA														
Wolcott	DNA														
Wolcott (Village)	-			-			-			-			7	DNA	100,000

DNA = Data not available.

Source: Municipal Representatives, 2007

Number, Square Footage, and Value of Permits Issued for New Residential Buildings (2006)

Wyoming County

Municipality	Single Family	Total Square Feet	Total Value (\$)	Two Family	Total Square Feet	Total Value (\$)	Three or Four Family (# of Units)	Total Square Feet	Total Value (\$)	Five or More Family (# of Units)	Total Square Feet	Total Value (\$)	Mnfctd/ Mobile Homes	Total Square Feet	Total Value (\$)
Arcade	6	DNA	DNA	-			-			-			4	DNA	DNA
Arcade (Village)	2	DNA	DNA	-			-			-			-		
Attica	1	DNA	DNA	-			-			-			-		
Attica (Village)	-			-			-			-			-		
Bennington	13	DNA	DNA	-			-			-			-		
Castile	6	DNA	DNA	-			-			-			-		
Castile (Village)	1	DNA	DNA	-			-			-			-		
Covington	-			-			-			-			-		
Eagle	7	DNA	DNA	-			-			-			2	DNA	DNA
Gainesville	1	DNA	DNA	-			-			-			2	DNA	DNA
Gainesville (Village)	-			-			-			-			-		
Genesee Falls	-			-			-			-			-		
Java	7	DNA	DNA	-			-			-			-		
Middlebury	1	DNA	DNA	-			-			-			2	DNA	DNA
Orangeville	1	DNA	DNA	-			-			-			1	DNA	DNA
Perry	1	DNA	DNA	-			-			-			2	DNA	DNA
Perry (Village)	1	DNA	DNA	-			-			-			-		
Pike	2	DNA	DNA	-			-			-			-		
Pike (Village)	1	DNA	DNA	-			-			-			-		
Sheldon	1	DNA	DNA	-			-			-			1	DNA	DNA
Silver Springs (Village)	-			-			-			-			-		
Warsaw	4	DNA	DNA	-			-			-			2	DNA	DNA
Warsaw (Village)	-			-			-			-			-		
Wethersfield	-			-			-			-			-		
Wyoming (Village)	-			-			-			-			-		

DNA = Data not available.

Source: Wyoming County Building Department, 2007

Number, Square Footage, and Value of Permits Issued for New Residential Buildings (2006)

Yates County

Municipality	Single Family	Total Square Feet	Total Value (\$)	Two Family	Total Square Feet	Total Value (\$)	Three or Four Family (# of Units)	Total Square Feet	Total Value (\$)	Five or More Family (# of Units)	Total Square Feet	Total Value (\$)	Mnfctd/ Mobile Homes	Total Square Feet	Total Value (\$)
Barrington	8	19,298	1,886,000	-			-			-			14	9,503	422,000
Benton	DNA														
Dresden (Village)	-			-			-			-			-		
Dundee (Village)	-			-			-			-			-		
Italy	-			-			-			-			7	11,200	277,050
Jerusalem	DNA														
Middlesex	DNA														
Milo	12	30,060	3,153,000	-			-			-			-		
Penn Yan (Village)	-			4	10,522	585,000	-			-			-		
Potter	2	2,500	225,000	-			-			-			1	1,500	150,000
Starkey	DNA														
Torrey	4	8,789	1,095,000	-			-			-			1	2,280	140,000

DNA = Data not available.

Source: Municipal Representatives, 2007

Appendix B

Number, Square Footage and Value of Permits Issued for New Industrial Buildings (2006)

Number, Square Footage, and Value of Permits Issued for New Industrial Buildings (2006)

Genesee County

Municipality	Permits	Total Square Feet	Total Value (\$)
Alabama	-		
Alexander	Did not return survey		
Alexander (Village)	-		
Batavia (City)	1	1,350	\$300,000
Batavia	Did not return survey		
Bergen	2	DNA	DNA
Bergen (Village)	-		
Bethany	-		
Byron	-		
Corfu (Village)	-		
Darien	-		
Elba	-		
Elba (Village)	-		
LeRoy	-		
LeRoy (Village)	-		
Oakfield	-		
Oakfield (Village)	Did not return survey		
Pavilion	-		
Pembroke	-		
Stafford	-		

DNA = Data not available.

Source: Municipal representatives, 2007

Number, Square Footage, and Value of Permits Issued for New Industrial Buildings (2006)

Livingston County

Municipality	Permits	Total Square Feet	Total Value (\$)
Avon	-		
Avon (Village)	1	318,701	\$34,700,000
Caledonia	1	DNA	\$300,000
Caledonia (Village)	-		
Conesus	-		
Dansville (Village)	-		
Geneseo	-		
Geneseo (Village)	-		
Groveland	-		
Leicester	-		
Leicester (Village)	Did not return survey		
Lima	1	5,216	\$140,000
Lima (Village)	-		
Livonia	-		
Livonia (Village)	Did not return survey		
Mount Morris	-		
Mount Morris (Village)	-		
North Dansville	-		
Nunda	-		
Nunda (Village)	-		
Ossian	-		
Portage	-		
Sparta	Did not return survey		
Springwater	Did not return survey		
West Sparta	-		
York	2	3,480	\$397,240

DNA = Data not available.

Source: Municipal representatives, 2007

Number, Square Footage, and Value of Permits Issued for New Industrial Buildings (2006)

Monroe County

Municipality	Permits	Total Square Feet	Total Value (\$)
Brighton	-		
Brockport (Village)	1	3,750	\$300,000
Chili	DNA		
Churchville (Village)	-		
Clarkson	-		
East Rochester (T/V)	-		
Fairport (Village)	1	28,510	DNA
Gates	1	26,800	\$700,000
Greece	-		
Hamlin	-		
Henrietta	22	DNA	\$19,064,958
Hilton (Village)	-		
Honeoye Falls (Village)	-		
Irondequoit	-		
Mendon	-		
Ogden	-		
Parma	-		
Penfield	DNA		
Perinton	-		
Pittsford	-		
Pittsford (Village)	-		
Riga	2	DNA	DNA
Rochester (City)	-		
Rush	-		
Scottsville (Village)	-		
Spencerport (Village)	-		
Sweden	-		
Webster	-		
Webster (Village)	-		
Wheatland	-		

DNA = Data not available.

Source: Municipal representatives, 2007

Number, Square Footage, and Value of Permits Issued for New Industrial Buildings (2006)

Ontario County

Municipality	Permits	Total Square Feet	Total Value (\$)
Bloomfield (Village)	-		
Bristol	-		
Canadice	-		
Canandaigua (City)	-		
Canandaigua	-		
Clifton Springs (Village)	-		
East Bloomfield	1	7,000	\$88,000
Farmington	-		
Geneva (City)	-		
Geneva	-		
Gorham	-		
Hopewell	-		
Manchester	-		
Manchester (Village)	-		
Naples	-		
Naples (Village)	-		
Phelps	2	12,380	\$250,000
Phelps (Village)	-		
Richmond	-		
Rushville (Village)	-		
Seneca	-		
Shortsville (Village)	-		
South Bristol	-		
Victor	1	31,273	\$980,000
Victor (Village)	-		
West Bloomfield	-		

DNA = Data not available.

Source: Municipal representatives, 2007

Number, Square Footage, and Value of Permits Issued for New Industrial Buildings (2006)

Orleans County

Municipality	Permits	Total Square Feet	Total Value (\$)
Albion	-		
Albion (Village)	-		
Barre	-		
Carlton	-		
Clarendon	Did not return survey		
Gaines	-		
Holley (Village)	Did not return survey		
Kendall	-		
Lyndonville (Village)	-		
Medina (Village)	-		
Murray	Did not return survey		
Ridgeway	-		
Shelby	-		
Yates	-		

DNA = Data not available.

Source: Municipal representatives, 2007

Number, Square Footage, and Value of Permits Issued for New Industrial Buildings (2006)

Seneca County

Municipality	Permits	Total Square Feet	Total Value (\$)
Covert	-		
Fayette	-		
Interlaken (Village)	included with Town of Covert		
Junius	-		
Lodi	-		
Lodi (Village)	included with Town of Lodi		
Ovid	-		
Ovid (Village)	included with Town of Ovid		
Romulus	-		
Seneca Falls	-		
Seneca Falls (Village)	-		
Tyre	-		
Varick	-		
Waterloo	-		
Waterloo (Village)	-		

DNA = Data not available.

Source: Seneca County Department of Economic Development & Planning, 2007

Number, Square Footage, and Value of Permits Issued for New Industrial Buildings (2006)

Wayne County

Municipality	Permits	Total Square Feet	Total Value (\$)
Arcadia	-		
Butler	Did not return survey		
Clyde (Village)	Did not return survey		
Galen	2	20,000	\$300,000
Huron	-		
Lyons	Did not return survey		
Lyons (Village)	Did not return survey		
Macedon	-		
Macedon (Village)	-		
Marion	Did not return survey		
Newark (Village)	-		
Ontario	2	51,760	\$2,475,000
Palmyra	1	115,360	\$5,517,776
Palmyra (Village)	-		
Red Creek (Village)	-		
Rose	-		
Savannah	-		
Sodus	-		
Sodus (Village)	-		
Sodus Point (Village)	-		
Walworth	Did not return survey		
Williamson	Did not return survey		
Wolcott	Did not return survey		
Wolcott (Village)	-		

DNA = Data not available.

Source: Municipal representatives, 2007

Number, Square Footage, and Value of Permits Issued for New Industrial Buildings (2006)

Wyoming County

Municipality	Permits	Total Square Feet	Total Value (\$)
Arcade		Data not available	
Arcade (Village)		Data not available	
Attica		Data not available	
Attica (Village)		Data not available	
Bennington		Data not available	
Castile		Data not available	
Castile (Village)		Data not available	
Covington		Data not available	
Eagle		Data not available	
Gainesville		Data not available	
Gainesville (Village)		Data not available	
Genesee Falls		Data not available	
Java		Data not available	
Middlebury		Data not available	
Orangeville		Data not available	
Perry		Data not available	
Perry (Village)		Data not available	
Pike		Data not available	
Pike (Village)		Data not available	
Sheldon		Data not available	
Silver Springs (Village)		Data not available	
Warsaw		Data not available	
Warsaw (Village)		Data not available	
Wethersfield		Data not available	
Wyoming (Village)		Data not available	

DNA = Data not available.

Source: Wyoming County Building Department, 2007

Number, Square Footage, and Value of Permits Issued for New Industrial Buildings (2006)

Yates County

Municipality	Permits	Total Square Feet	Total Value (\$)
Barrington	-		
Benton	Did not return survey		
Dresden (Village)	-		
Dundee (Village)	-		
Italy	-		
Jerusalem	Did not return survey		
Middlesex	Did not return survey		
Milo	-		
Penn Yan (Village)	1	508	38,400
Potter	-		
Starkey	Did not return survey		
Torrey	1	37,800	\$1,200,000

DNA = Data not available.

Source: Municipal representatives, 2007

Appendix C

Number, Square Footage and Value of Permits Issued for New Commercial Buildings (2006)

Number, Square Footage, and Value of Permits Issued for New Commercial Buildings (2006)

Genesee County

Municipality	Offices/ Banks	Total Square Feet	Total Value (\$)	Retail/ Service	Total Square Feet	Total Value (\$)	Service Stations	Total Square Feet	Total Value (\$)	Hotels/ Motels	Total Square Feet	Total Value (\$)
Alabama	-			-			-			-		
Alexander	Did not return survey											
Alexander (Village)	-			-			-			-		
Batavia (City)	1	DNA	400,000	1	11,945	1,250,000	-			-		
Batavia	Did not return survey											
Bergen	-			-			-			-		
Bergen (Village)	-			-			-			-		
Bethany	-			1	7,776	68,000	-			-		
Byron	-			-			-			-		
Corfu (Village)	-			-			-			-		
Darien	-			-			-			-		
Elba	-			-			-			-		
Elba (Village)	-			-			-			-		
LeRoy	-			-			-			-		
LeRoy (Village)	-			-			1	18,883	475,000	-		
Oakfield	-			-			-			-		
Oakfield (Village)	Did not return survey											
Pavilion	-			-			-			-		
Pembroke	-			-			-			-		
Stafford	-			-			-			-		

DNA = Data not available.

Source: Municipal representatives, 2007

Number, Square Footage, and Value of Permits Issued for New Commercial Buildings (2006)

Livingston County

Municipality	Offices/ Banks	Total Square Feet	Total Value (\$)	Retail/ Service	Total Square Feet	Total Value (\$)	Service Stations	Total Square Feet	Total Value (\$)	Hotels/ Motels	Total Square Feet	Total Value (\$)
Avon	-			-			-			-		
Avon (Village)	-			-			-			-		
Caledonia	-			-			-			-		
Caledonia (Village)	-			-			-			-		
Conesus	-			-			-			-		
Dansville (Village)	2	DNA	DNA	-			1	DNA	250,000	-		
Geneseo	-			-			-			-		
Geneseo (Village)	-			-			-			-		
Groveland	-			-			-			-		
Leicester	-			-			-			-		
Leicester (Village)	Did not return survey											
Lima	-			-			-			-		
Lima (Village)	-			-			-			-		
Livonia	2	4,000	190,200	-			-			-		
Livonia (Village)	Did not return survey											
Mount Morris	-			-			-			-		
Mount Morris (Village)	-			-			-			-		
North Dansville	-			1	DNA	395,000	-			-		
Nunda	-			-			-			-		
Nunda (Village)	-			-			-			-		
Ossian	-			-			-			-		
Portage	-			-			-			-		
Sparta	Did not return survey											
Springwater	Did not return survey											
West Sparta	-			-			-			-		
York	-			-			-			-		

DNA= Data not available.

Source: Municipal representatives, 2007

Number, Square Footage, and Value of Permits Issued for New Commercial Buildings (2006)

Monroe County

Municipality	Offices/ Banks	Total Square Feet	Total Value (\$)	Retail/ Service	Total Square Feet	Total Value (\$)	Service Stations	Total Square Feet	Total Value (\$)	Hotels/ Motels	Total Square Feet	Total Value (\$)
Brighton	2	10,894	847,562	1	16,964	1,900,000	-			-		
Brockport (Village)	-			-			-			-		
Chili*	22 units at 17,967,900											
Churchville (Village)	-			-			-			-		
Clarkson	1	1,200	150,000	-			-			-		
East Rochester (T/V)	-			-			-			-		
Fairport (Village)	-			-			-			-		
Gates	2	8,380	900,000	-			-			-		
Greece	8	DNA	3,695,380	3	DNA	14,486,891	1	DNA	500,000	-		
Hamlin	-			-			-			-		
Henrietta	-			-			-			1	43,000	2,400,000
Hilton (Village)	1	DNA	78,000	-			-			-		
Honeoye Falls (Village)	-			-			-			-		
Irondequoit	1	3,200	920,600	1	127,000	5,500,000	-			-		
Mendon	-			-			-			-		
Ogden	-			-			-			-		
Parma	-			-			-			-		
Penfield*	30 units at 57,551,400											
Perinton	2	97,560	3,073,000	1	9,050	700,000	-			-		
Pittsford	-			-			-			-		
Pittsford (Village)	-			-			-			-		
Riga	-			-			-			-		
Rochester (City)	1	5,590	1,100,000	-			-			-		
Rush	-			-			-			-		
Scottsville (Village)	-			-			-			-		
Spencerport (Village)	-			-			-			-		
Sweden	-			3	246,308	8,825,000	-			-		
Webster	-			5	43,469	4,263,000	-			1	67,220	8,000,000
Webster (Village)	-			-			-			-		
Wheatland	-			-			-			-		

DNA= Data not available.

*Chili and Penfield did not specify between commercial and industrial permits.

Source: Municipal representatives, 2007

Number, Square Footage, and Value of Permits Issued for New Commercial Buildings (2006)

Ontario County

Municipality	Offices/ Banks	Total Square Feet	Total Value (\$)	Retail/ Service	Total Square Feet	Total Value (\$)	Service Stations	Total Square Feet	Total Value (\$)	Hotels/ Motels	Total Square Feet	Total Value (\$)
Bloomfield (Village)	-			-			-			-		
Bristol	-			-			-			-		
Canadice	-			-			-			-		
Canandaigua (City)	-			1	14,511	2,000,000	-			-		
Canandaigua	-			-			-			-		
Clifton Springs (Village)	-			-			-			-		
East Bloomfield	-			-			-			-		
Farmington	-			-			-			-		
Geneva (City)	-			1	6,000	629,700	-			-		
Geneva	-			1	45,000	150,000	-			-		
Gorham	-			-			-			-		
Hopewell	-			2	14,410	780,000	-			-		
Manchester	-			-			-			-		
Manchester (Village)	-			-			-			-		
Naples	-			-			-			-		
Naples (Village)	-			1	8,970	300,000	-			-		
Phelps	-			-			-			-		
Phelps (Village)	-			-			-			-		
Richmond	-			-			-			-		
Rushville (Village)	-			-			-			-		
Seneca	-			-			-			-		
Shortsville (Village)	-			-			-			-		
South Bristol	-			-			-			-		
Victor	-			4	33,042	1,450,000	-			-		
Victor (Village)	-			-			-			-		
West Bloomfield	-			-			-			-		

DNA = Data not available.

Source: Municipal representatives, 2007

Number, Square Footage, and Value of Permits Issued for New Commercial Buildings (2006)

Orleans County

Municipality	Offices/ Banks	Total Square Feet	Total Value (\$)	Retail/ Service	Total Square Feet	Total Value (\$)	Service Stations	Total Square Feet	Total Value (\$)	Hotels/ Motels	Total Square Feet	Total Value (\$)
Albion	-			-			-			-		
Albion (Village)	-			-			-			-		
Barre	-			-			-			-		
Carlton	-			-			-			-		
Clarendon	Did not return survey											
Gaines	-			-			-			-		
Holley (Village)	Did not return survey											
Kendall	-			1	672	21,000	-			-		
Lyndonville (Village)	-			-			-			-		
Medina (Village)	-			-			1	14,000	400,000	-		
Murray	Did not return survey											
Ridgeway	-			-			-			-		
Shelby	-			-			-			-		
Yates	-			-			-			-		

DNA = Data not available.

Source: Municipal representatives, 2007

Number, Square Footage, and Value of Permits Issued for New Commercial Buildings (2006)

Seneca County

Municipality	Offices/ Banks	Total Square Feet	Total Value (\$)	Retail/ Service	Total Square Feet	Total Value (\$)	Service Stations	Total Square Feet	Total Value (\$)	Hotels/ Motels	Total Square Feet	Total Value (\$)
Covert	-			-			-			-		
Fayette	-			1	DNA	4,250	-			-		
Interlaken (Village)	Included with Town of Covert											
Junius	-			2	DNA	240,000	-			-		
Lodi	-			1	DNA	61,000	-			-		
Lodi (Village)	Included with Town of Lodi											
Ovid	-			2	DNA	101,000	-			-		
Ovid (Village)	Included with Town of Ovid											
Romulus	-			2	DNA	61,275	-			-		
Seneca Falls	-			2	DNA	648,000	-			-		
Seneca Falls (Village)	-			-			-			-		
Tyre	-			1	DNA	100,000	-			-		
Varick	-			-			-			-		
Waterloo	-			2	DNA	60,000	-			-		
Waterloo (Village)	-			-			-			-		

DNA = Data not available.

Source: Seneca County Department of Economic Development & Planning, 2007

Number, Square Footage, and Value of Permits Issued for New Commercial Buildings (2006)

Wayne County

Municipality	Offices/ Banks	Total Square Feet	Total Value (\$)	Retail/ Service	Total Square Feet	Total Value (\$)	Service Stations	Total Square Feet	Total Value (\$)	Hotels/ Motels	Total Square Feet	Total Value (\$)
Arcadia	-			-			-			-		
Butler	Did not return survey											
Clyde (Village)	Did not return survey											
Galen	-			-			-			-		
Huron	-			-			-			-		
Lyons	Did not return survey											
Lyons (Village)	Did not return survey											
Macedon	-			3	14,760	471,000	-			-		
Macedon (Village)	-			-			-			-		
Marion	Did not return survey											
Newark (Village)	1	3,055	328,000	2	17,620	2,350,000	-			-		
Ontario	-			3	30,125	1,256,000	1	2,720	150,000	-		
Palmyra	-			-			-			-		
Palmyra (Village)	-			-			-			-		
Red Creek (Village)	-			-			-			-		
Rose	-			-			-			-		
Savannah	-			-			-			-		
Sodus	-			-			-			-		
Sodus (Village)	-			-			-			-		
Sodus Point (Village)	-			-			-			-		
Walworth	Did not return survey											
Williamson	Did not return survey											
Wolcott	Did not return survey											
Wolcott (Village)	-			-			-			-		

DNA = Data not available.

Source: Municipal representatives, 2007

Number, Square Footage, and Value of Permits Issued for New Commercial Buildings (2006)

Wyoming County

Municipality	Offices/ Banks	Total Square Feet	Total Value (\$)	Retail/ Service	Total Square Feet	Total Value (\$)	Service Stations	Total Square Feet	Total Value (\$)	Hotels/ Motels	Total Square Feet	Total Value (\$)
Arcade			4							Unspecified Commerical Permit(s)		
Arcade (Village)			3							Unspecified Commerical Permit(s)		
Attica			-									
Attica (Village)			3							Unspecified Commerical Permit(s)		
Bennington			2							Unspecified Commerical Permit(s)		
Castile			2							Unspecified Commerical Permit(s)		
Castile (Village)			1							Unspecified Commerical Permit(s)		
Covington			-									
Eagle			8							Unspecified Commerical Permit(s)		
Gainesville			-									
Gainesville (Village)			-									
Genesee Falls			-									
Java			5							Unspecified Commerical Permit(s)		
Middlebury			1							Unspecified Commerical Permit(s)		
Orangeville			-									
Perry			2							Unspecified Commerical Permit(s)		
Perry (Village)			-									
Pike			1							Unspecified Commerical Permit(s)		
Pike (Village)			-									
Sheldon			1							Unspecified Commerical Permit(s)		
Silver Springs (Village)			3							Unspecified Commerical Permit(s)		
Warsaw			2							Unspecified Commerical Permit(s)		
Warsaw (Village)			-									
Wethersfield			-									
Wyoming (Village)			2							Unspecified Commerical Permit(s)		

DNA = Data not available.

Source: Wyoming County Building Department, 2007

Number, Square Footage, and Value of Permits Issued for New Commercial Buildings (2006)

Yates County

Municipality	Offices/ Banks	Total Square Feet	Total Value (\$)	Retail/ Service	Total Square Feet	Total Value (\$)	Service Stations	Total Square Feet	Total Value (\$)	Hotels/ Motels	Total Square Feet	Total Value (\$)
Barrington	-			-			-			-		
Benton	Did not return survey											
Dresden (Village)	-			-			-			-		
Dundee (Village)	-			1	9,100	650,000	-			-		
Italy	-			-			-			-		
Jerusalem	Did not return survey											
Middlesex	Did not return survey											
Milo	-			-			-			-		
Penn Yan (Village)	-			1	2,400	370,000	1	6,192	160,000	-		
Potter	-			-			-			-		
Starkey	Did not return survey											
Torrey	-			-			-			-		

DNA = Data not available.

Source: Municipal representatives, 2007

Appendix D

Number, Square Footage and Value of Permits Issued for New Community Service Buildings (2006)

Number, Square Footage, and Value of Permits Issued for New Community Service Buildings (2006)

Genesee County

Municipality	Hospitals	Total Square Feet	Total Value (\$)	Schools/ Churches	Total Square Feet	Total Value (\$)	Other	Total Square Feet	Total Value (\$)
Alabama	-			-			-		
Alexander	Did not return survey								
Alexander (Village)	-			-			-		
Batavia (City)	-			-			-		
Batavia	Did not return survey								
Bergen	-			-			-		
Bergen (Village)	-			-			-		
Bethany	-			-			-		
Byron	-			-			-		
Corfu (Village)	-			-			-		
Darien	-			-			-		
Elba	-			-			-		
Elba (Village)	-			-			-		
LeRoy	-			-			-		
LeRoy (Village)	-			-			-		
Oakfield	-			-			-		
Oakfield (Village)	Did not return survey								
Pavilion	-			-			-		
Pembroke	-			-			-		
Stafford	-			-			-		

DNA= Data not available.

Source: Municipal representatives, 2007

Number, Square Footage, and Value of Permits Issued for New Community Service Buildings (2006)

Livingston County

Municipality	Hospitals	Total Square Feet	Total Value (\$)	Schools/ Churches	Total Square Feet	Total Value (\$)	Other	Total Square Feet	Total Value (\$)
Avon	-			-			-		
Avon (Village)	-			-			-		
Caledonia	-			-			-		
Caledonia (Village)	-			-			-		
Conesus	-			-			-		
Dansville (Village)	1	DNA	10,000,000	-			-		
Geneseo	-			-			-		
Geneseo (Village)	-			-			-		
Groveland	-			1	6,000	\$100,000	-		
Leicester	-			-			-		
Leicester (Village)	Did not return survey								
Lima	-			-			-		
Lima (Village)	-			-			-		
Livonia	-			-			-		
Livonia (Village)	Did not return survey								
Mount Morris	-			-			-		
Mount Morris (Village)	-			-			-		
North Dansville	-			-			-		
Nunda	-			-			-		
Nunda (Village)	-			-			-		
Ossian	-			-			-		
Portage	-			-			-		
Sparta	Did not return survey								
Springwater	Did not return survey								
West Sparta	-			-			-		
York	-			-			-		

DNA= Data not available.

Source: Municipal representatives, 2007

Number, Square Footage, and Value of Permits Issued for New Community Service Buildings (2006)

Monroe County

Municipality	Hospitals	Total Square Feet	Total Value (\$)	Schools/ Churches	Total Square Feet	Total Value (\$)	Other	Total Square Feet	Total Value (\$)
Brighton	-			-			-		
Brockport (Village)	-			-			-		
Chili					DNA				
Churchville (Village)	-			-			-		
Clarkson	-			-			-		
East Rochester (T/V)	-			-			-		
Fairport (Village)	-			-			-		
Gates	-			-			-		
Greece	-			1	DNA	\$7,949,000	1	DNA	\$2,300,000
Hamlin	-			-			-		
Henrietta	-			-			-		
Hilton (Village)	-			-			-		
Honeoye Falls (Village)	-			-			-		
Irondequoit	-			-			-		
Mendon	-			-			-		
Ogden	-			-			-		
Parma	-			-			-		
Penfield					DNA				
Perinton	-			-			-		
Pittsford	-			1	40,020	\$6,000,000	-		
Pittsford (Village)	-			-			-		
Riga	-			-			-		
Rochester (City)	-			-			-		
Rush	-			-			-		
Scottsville (Village)	-			-			-		
Spencerport (Village)	-			-			-		
Sweden	-			-			-		
Webster	-			-			-		
Webster (Village)	-			-			-		
Wheatland	-			-			-		

DNA= Data not available.

Source: Municipal representatives, 2007

Number, Square Footage, and Value of Permits Issued for New Community Service Buildings (2006)

Ontario County

Municipality	Hospitals	Total Square Feet	Total Value (\$)	Schools/ Churches	Total Square Feet	Total Value (\$)	Other	Total Square Feet	Total Value (\$)
Bloomfield (Village)	-			-			-		
Bristol	-			-			-		
Canadice	-			-			-		
Canandaigua (City)	-			-			-		
Canandaigua	-			-			-		
Clifton Springs (Village)	-			-			-		
East Bloomfield	-			-			-		
Farmington	-			-			-		
Geneva (City)	-			-			-		
Geneva	-			-			-		
Gorham	-			-			-		
Hopewell	-			-			-		
Manchester	-			-			-		
Manchester (Village)	-			-			-		
Naples	-			-			-		
Naples (Village)	-			-			-		
Phelps	-			-			-		
Phelps (Village)	-			-			-		
Richmond	-			-			-		
Rushville (Village)	-			-			-		
Seneca	-			-			-		
Shortsville (Village)	-			-			-		
South Bristol	-			-			-		
Victor	-			-			-		
Victor (Village)	-			-			-		
West Bloomfield	-			-			-		

DNA= Data not available.

Source: Municipal representatives, 2007

Number, Square Footage, and Value of Permits Issued for New Community Service Buildings (2006)

Orleans County

Municipality	Hospitals	Total Square Feet	Total Value (\$)	Schools/ Churches	Total Square Feet	Total Value (\$)	Other	Total Square Feet	Total Value (\$)
Albion	-			-			-		
Albion (Village)	-			-			1	3,205	\$403,750
Barre	-			-			-		
Carlton	-			-			-		
Clarendon	Did not return survey								
Gaines	-			-			-		
Holley (Village)	Did not return survey								
Kendall	-			-			-		
Lyndonville (Village)	-			-			-		
Medina (Village)	-			-			-		
Murray	Did not return survey								
Ridgeway	-			-			-		
Shelby	-			-			-		
Yates	-			-			-		

DNA= Data not available.

Source: Municipal representatives, 2007

Number, Square Footage, and Value of Permits Issued for New Community Service Buildings (2006)

Seneca County

Municipality	Hospitals	Total Square Feet	Total Value (\$)	Schools/ Churches	Total Square Feet	Total Value (\$)	Other	Total Square Feet	Total Value (\$)
Covert	-			-			-		
Fayette	-			-			-		
Interlaken (Village)	-			-			-		
Junius	-			-			-		
Lodi	-			-			-		
Lodi (Village)	-			-			-		
Ovid	-			-			-		
Ovid (Village)	-			-			-		
Romulus	-			-			-		
Seneca Falls	-			-			-		
Seneca Falls (Village)	-			-			-		
Tyre	-			-			-		
Varick	-			-			-		
Waterloo	-			-			-		
Waterloo (Village)	-			-			-		

DNA= Data not available.

Source: Seneca County Department of Economic Development & Planning, 2007

Number, Square Footage, and Value of Permits Issued for New Community Service Buildings (2006)

Wayne County

Municipality	Hospitals	Total Square Feet	Total Value (\$)	Schools/ Churches	Total Square Feet	Total Value (\$)	Other	Total Square Feet	Total Value (\$)
Arcadia	-			-					
Butler	Did not return survey								
Clyde (Village)	Did not return survey								
Galen	-			-			-		
Huron	-			-			-		
Lyons	Did not return survey								
Lyons (Village)	Did not return survey								
Macedon	-			-			-		
Macedon (Village)	-			-			-		
Marion	Did not return survey								
Newark (Village)	-			-			-		
Ontario	-			-			-		
Palmyra	-			-			-		
Palmyra (Village)	-			-			-		
Red Creek (Village)	-			-			-		
Rose	-			-			-		
Savannah	-			-			-		
Sodus	-			-			-		
Sodus (Village)	-			-			-		
Sodus Point (Village)	-			-			-		
Walworth	Did not return survey								
Williamson	Did not return survey								
Wolcott	Did not return survey								
Wolcott (Village)	-			-			-		

DNA= Data not available.

Source: Municipal representatives, 2007

Number, Square Footage, and Value of Permits Issued for New Community Service Buildings (2006)

Wyoming County

Municipality	Hospitals	Total Square Feet	Total Value (\$)	Schools/ Churches	Total Square Feet	Total Value (\$)	Other	Total Square Feet	Total Value (\$)
Arcade					Data not available				
Arcade (Village)					Data not available				
Attica					Data not available				
Attica (Village)					Data not available				
Bennington					Data not available				
Castile					Data not available				
Castile (Village)					Data not available				
Covington					Data not available				
Eagle					Data not available				
Gainesville					Data not available				
Gainesville (Village)					Data not available				
Genesee Falls					Data not available				
Java					Data not available				
Middlebury					Data not available				
Orangeville					Data not available				
Perry					Data not available				
Perry (Village)					Data not available				
Pike					Data not available				
Pike (Village)					Data not available				
Sheldon					Data not available				
Silver Springs (Village)					Data not available				
Warsaw					Data not available				
Warsaw (Village)					Data not available				
Wethersfield					Data not available				
Wyoming (Village)					Data not available				

DNA = Data not available.

Source: Wyoming County Building Department, 2007

Number, Square Footage, and Value of Permits Issued for New Community Service Buildings (2006)

Yates County

Municipality	Hospitals	Total Square Feet	Total Value (\$)	Schools/ Churches	Total Square Feet	Total Value (\$)	Other	Total Square Feet	Total Value (\$)
Barrington	-			-			-		
Benton									
Dresden (Village)	-			-			-		
Dundee (Village)	1	2,600	420,000	-			-		
Italy	-			-			-		
Jerusalem									
Middlesex									
Milo	-			-			-		
Penn Yan (Village)	-			-			-		
Potter	-			-			-		
Starkey									
Torrey	-			-			-		

DNA = Data not available.

Source: Municipal representatives, 2007

Appendix E

Number, Square Footage and Value of Permits Issued for New Buildings Not Elsewhere Classified (2006)

Number, Description, Square Footage, and Value of Permitted New Buildings Not Elsewhere Classified (2006)

Genesee County

Municipality	Permits	Description(s)	Total Square Feet	Total Value (\$)
Alabama	-			
Alexander	Did not return survey			
Alexander (Village)	-			
Batavia (City)	1	community bldg. for apartment complex		
Batavia	Did not return survey			
Bergen	-			
Bergen (Village)	-			
Bethany	-			
Byron	-			
Corfu (Village)	-			
Darien	-			
Elba	-			
Elba (Village)	-			
LeRoy	-			
LeRoy (Village)	-			
Oakfield	-			
Oakfield (Village)	Did not return survey			
Pavilion	-			
Pembroke	-			
Stafford	-			

DNA= Data not available.

Source: Municipal representatives, 2007

Number, Description, Square Footage, and Value of Permitted New Buildings Not Elsewhere Classified (2006)

Livingston County

Municipality	Permits	Description(s)	Total Square Feet	Total Value (\$)
Avon	-			
Avon (Village)	-			
Caledonia	-			
Caledonia (Village)	-			
Conesus	-			
Dansville (Village)	-			
Geneseo	-			
Geneseo (Village)	-			
Groveland	-			
Leicester	-			
Leicester (Village)	Did not return survey			
Lima	1	DNA	6,500	\$1,000,000
Lima (Village)	-			
Livonia	-			
Livonia (Village)	Did not return survey			
Mount Morris	-			
Mount Morris (Village)	-			
North Dansville	2	air medicine transport base, pilots training	DNA	\$155,000
Nunda	-			
Nunda (Village)	3	DNA	2,412	\$50,000
Ossian	-			
Portage	-			
Sparta	Did not return survey			
Springwater	Did not return survey			
West Sparta	-			
York	-			

DNA= Data not available.

Source: Municipal representatives, 2007

Number, Description, Square Footage, and Value of Permitted New Buildings Not Elsewhere Classified (2006)

Monroe County

Municipality	Permits	Description(s)	Total Square Feet	Total Value (\$)
Brighton	-			
Brockport (Village)	-			
Chili	DNA			
Churchville (Village)	-			
Clarkson	-			
East Rochester (T/V)	-			
Fairport (Village)	1	Mixed use-residential/commercial	13,000	\$800,000
Gates	-			
Greece	-			
Hamlin	-			
Henrietta	-			
Hilton (Village)	-			
Honeoye Falls (Village)	-			
Irondequoit	-			
Mendon	-			
Ogden	-			
Parma	-			
Penfield	DNA			
Perinton	-			
Pittsford	-			
Pittsford (Village)	-			
Riga	-			
Rochester (City)	1	storage building	9,000	\$150,000
Rush	-			
Scottsville (Village)	-			
Spencerport (Village)	-			
Sweden	-			
Webster	-			
Webster (Village)	-			
Wheatland	-			

DNA= Data not available.

Source: Municipal representatives, 2007

Number, Description, Square Footage, and Value of Permitted New Buildings Not Elsewhere Classified (2006)

Ontario County

Municipality	Permits	Description(s)	Total Square Feet	Total Value (\$)
Bloomfield (Village)	-			
Bristol	-			
Canadice	-			
Canandaigua (City)	1	boat storage	5,125	\$200,000
Canandaigua	-			
Clifton Springs (Village)	-			
East Bloomfield	1	dairy cow barn	26,448	\$30,000
Farmington	1	DNA	DNA	\$100,000
Geneva (City)	-			
Geneva	-			
Gorham	-			
Hopewell	1	FLCC student housing	132,000	\$11,712,325
Manchester	-			
Manchester (Village)	-			
Naples	-			
Naples (Village)	-			
Phelps	7	major agriculture	80,568	\$727,132
Phelps (Village)	-			
Richmond	-			
Rushville (Village)	-			
Seneca	-			
Shortsville (Village)	-			
South Bristol	-			
Victor	-			
Victor (Village)	-			
West Bloomfield	-			

DNA= Data not available.

Source: Municipal representatives, 2007

Number, Description, Square Footage, and Value of Permitted New Buildings Not Elsewhere Classified (2006)

Orleans County

Municipality	Permits	Description(s)	Total Square Feet	Total Value (\$)
Albion	-			
Albion (Village)	-			
Barre	-			
Carlton	-			
Clarendon	Did not return survey			
Gaines	-			
Holley (Village)	Did not return survey			
Kendall	-			
Lyndonville (Village)	-			
Medina (Village)	-			
Murray	Did not return survey			
Ridgeway	-			
Shelby	-			
Yates	-			

DNA= Data not available.

Source: Municipal representatives, 2007

Number, Description, Square Footage, and Value of Permitted New Buildings Not Elsewhere Classified (2006)

Seneca County

Municipality	Permits	Description(s)	Total Square Feet	Total Value (\$)
Covert	-			
Fayette	-			
Interlaken (Village)	-			
Junius	-			
Lodi	1	Highway Dept. bldg.	DNA	\$250,000
Lodi (Village)	-			
Ovid	-			
Ovid (Village)	-			
Romulus	-			
Seneca Falls	-			
Seneca Falls (Village)	-			
Tyre	-			
Varick	-			
Waterloo	-			
Waterloo (Village)	-			

DNA= Data not available.

Source: Seneca County Department of Economic Development & Planning, 2007

Number, Description, Square Footage, and Value of Permitted New Buildings Not Elsewhere Classified (2006)

Wayne County

Municipality	Permits	Description(s)	Total Square Feet	Total Value (\$)
Arcadia	-			
Butler		Did not return survey		
Clyde (Village)		Did not return survey		
Galen	14	DNA	30,943	\$315,950
Huron	-			
Lyons		Did not return survey		
Lyons (Village)		Did not return survey		
Macedon	-			
Macedon (Village)	-			
Marion		Did not return survey		
Newark (Village)	-			
Ontario	1	machine shop	6,072	\$200,000
Palmyra	-			
Palmyra (Village)	-			
Red Creek (Village)	-			
Rose	-			
Savannah	-			
Sodus	1	veterinarian hospital	3,000	\$325,000
Sodus (Village)	-			
Sodus Point (Village)	-			
Walworth		Did not return survey		
Williamson		Did not return survey		
Wolcott		Did not return survey		
Wolcott (Village)	-			

DNA= Data not available.

Source: Municipal representatives, 2007

Number, Description, Square Footage, and Value of Permitted New Buildings Not Elsewhere Classified (2006)

Wyoming County

Municipality	Permits	Description(s)	Total Square Feet	Total Value (\$)
Arcade		DNA		
Arcade (Village)		DNA		
Attica		DNA		
Attica (Village)		DNA		
Bennington		DNA		
Castile		DNA		
Castile (Village)		DNA		
Covington		DNA		
Eagle		DNA		
Gainesville		DNA		
Gainesville (Village)		DNA		
Genesee Falls		DNA		
Java		DNA		
Middlebury		DNA		
Orangeville		DNA		
Perry		DNA		
Perry (Village)		DNA		
Pike		DNA		
Pike (Village)		DNA		
Sheldon		DNA		
Silver Springs (Village)		DNA		
Warsaw		DNA		
Warsaw (Village)		DNA		
Wethersfield		DNA		
Wyoming (Village)		DNA		

DNA= Data not available.

Source: Wyoming County Building Department, 2007

Number, Description, Square Footage, and Value of Permitted New Buildings Not Elsewhere Classified (2006)

Yates County

Municipality	Permits	Description(s)	Total Square Feet	Total Value (\$)
Barrington	-			
Benton		Did not return survey		
Dresden (Village)	-			
Dundee (Village)	-			
Italy	-			
Jerusalem		Did not return survey		
Middlesex		Did not return survey		
Milo	-			
Penn Yan (Village)	-			
Potter	-			
Starkey		Did not return survey		
Torrey	-			

DNA= Data not available.

Source: Municipal representatives, 2007

Appendix F

Number and Type of Buildings Demolished (2006)

Number and Type of Buildings Demolished (2006)

Genesee County

Municipality	Permit / track Demo.	Residential Permits issued (# of units)	Industrial (approx. sq. feet)	Commercial (approx. sq. feet)	Other (approx. sq. feet)
Alabama	yes	1	-	-	-
Alexander	Did not return survey				
Alexander (Village)	yes	-	-	-	-
Batavia (City)	yes	3	-	3*(23,180)	3(700)
Batavia	Did not return survey				
Bergen	no	-	-	-	-
Bergen (Village)	yes	-	-	-	-
Bethany	no	-	-	-	-
Byron	no	-	-	-	-
Corfu (Village)	yes	-	-	-	-
Darien	no	-	-	-	-
Elba	yes	-	-	-	-
Elba (Village)	yes	-	-	-	-
LeRoy	yes	-	-	-	-
LeRoy (Village)	yes	-	-	1 (8,022)	-
Oakfield	yes	-	-	-	-
Oakfield (Village)	Did not return survey				
Pavilion	yes	2	-	-	-
Pembroke	yes	-	-	-	-
Stafford	no	-	-	-	-

* 15 room motel also demolished in the City of Batavia (square footage not available)

DNA = Data not available.

Source: Municipal representatives, 2007

Number and Type of Buildings Demolished (2006)

Livingston County

Municipality	Permit / track Demo.	Residential Permits issued (# of units)	Industrial (approx. sq. feet)	Commercial (approx. sq. feet)	Other (total approx. sq. feet)
Avon	yes	1	-	-	-
Avon (Village)	yes	-	-	-	-
Caledonia	yes	-	-	-	1
Caledonia (Village)	yes	1	-	-	-
Conesus	yes	6	-	1(500)	1(6,000)
Dansville (Village)	yes	4	-	2 bldgs.	-
Geneseo	yes	1	-	-	-
Geneseo (Village)	yes	1	-	1(5600)	-
Groveland	yes	-	-	-	3
Leicester	no	-	-	-	-
Leicester (Village)	Did not return survey				
Lima	yes	-	-	-	-
Lima (Village)	yes	-	-	-	-
Livonia	yes	4	-	-	1(3200)
Livonia (Village)	Did not return survey				
Mount Morris	yes	-	-	-	-
Mount Morris (Village)	yes	1	-	-	-
North Dansville	yes	-	-	1 bldg.	-
Nunda	yes	-	-	-	1(1744)
Nunda (Village)	yes	-	-	-	1(1900)
Ossian	yes	-	-	-	-
Portage	yes	1	-	-	-
Sparta	Did not return survey				
Springwater	Did not return survey				
West Sparta	yes	2	-	-	-
York	no	-	-	-	-

DNA= Data not available.

Source: Municipal representatives, 2007

Number and Type of Buildings Demolished (2006)

Monroe County

Municipality	Permit / track Demo.	Residential Permits issued (# of units)	Industrial (approx. sq. feet)	Commercial (approx. sq. feet)	Other (approx. sq. feet)
Brighton	yes	2	-	2(3244)	-
Brockport (Village)	yes	-	-	-	-
Chili	yes	7 units (unspecified)			
Churchville (Village)	yes	-	1	-	-
Clarkson	yes	-	-	-	6(1500)
East Rochester (T/V)	yes	-	-	-	-
Fairport (Village)	yes	-	-	1	-
Gates	yes	2	-	1(2000)	2(1200)
Greece	yes	-	7(69155)	2(44303)	-
Hamlin	yes	-	-	-	5(10000)
Henrietta	yes	25 units (unspecified)			
Hilton (Village)	yes	2	-	-	-
Honeoye Falls (Village)	yes	-	-	-	-
Irondequoit	yes	3	-	-	16
Mendon	yes	-	-	-	1
Ogden	yes	7	-	-	-
Parma	yes	1	-	-	8(2500)
Penfield	yes	DNA			
Perinton	yes	-	-	1(900)	-
Pittsford	yes	DNA			
Pittsford (Village)	yes	-	-	-	-
Riga	no	-	-	-	-
Rochester (City)	yes	210(299)	-	-	80
Rush	yes	-	-	-	-
Scottsville (Village)	yes	-	-	-	-
Spencerport (Village)	yes	-	-	-	1(9000)
Sweden	yes	1	-	1(11200)	-
Webster	yes	22	-	2(23852)	-
Webster (Village)	yes	-	-	-	1(5000)
Wheatland	yes	1	-	-	-

DNA= Data not available.

Source: Municipal representatives, 2007

Number and Type of Buildings Demolished (2006)

Ontario County

Municipality	Permit / track Demo.	Residential Permits issued (# of units)	Industrial (approx. sq. feet)	Commercial (approx. sq. feet)	Other (approx. sq. feet)
Bloomfield (Village)	yes	-	-	-	-
Bristol	yes	2	1(3111)	-	-
Canadice	yes	5	-	-	-
Canandaigua (City)	yes	-	-	1(4000)	4
Canandaigua	yes	13	-	-	-
Clifton Springs (Village)	yes	3	-	-	-
East Bloomfield	yes	-	-	-	-
Farmington	no	-	-	-	-
Geneva (City)	yes	6	-	-	-
Geneva	yes	3	-	2	-
Gorham	yes	3	-	-	-
Hopewell	no	-	-	-	-
Manchester	yes	12	-	-	-
Manchester (Village)	yes	3	-	-	-
Naples	yes	2	-	-	2(8640)
Naples (Village)	yes	-	-	-	-
Phelps	yes	-	-	-	-
Phelps (Village)	yes	-	-	1(2500)	1(6800)
Richmond	yes	4	-	-	-
Rushville (Village)	yes	-	-	3	-
Seneca	yes	3	-	-	3(2000)
Shortsville (Village)	yes	1	-	-	-
South Bristol	yes	6	-	-	-
Victor	yes	6	-	-	-
Victor (Village)	yes	-	-	-	-
West Bloomfield	yes	1	-	-	-

DNA = Data not available.

Source: Municipal representatives, 2007

Number and Type of Buildings Demolished (2006)

Orleans County

Municipality	Permit / track Demo.	Residential Permits issued (# of units)	Industrial (approx. sq. feet)	Commercial (approx. sq. feet)	Other (approx. sq. feet)
Albion	yes	-	-	-	3(2300)
Albion (Village)	yes	3	-	-	1(400)
Barre	yes	1	-	-	1(1000)
Carlton	no	-	-	-	-
Clarendon	Did not return survey				
Gaines	yes	2	-	-	1(6200)
Holley (Village)	Did not return survey				
Kendall	no	-	-	-	-
Lyndonville (Village)	no	-	-	-	-
Medina (Village)	yes	-	-	-	1(3120)
Murray	Did not return survey				
Ridgeway	yes	1	-	-	-
Shelby	yes	1	-	-	-
Yates	yes	6	-	1(1000)	-

DNA = Data not available.

Source: Municipal representatives, 2007

Number and Type of Buildings Demolished (2006)

Seneca County

Municipality	Permit / track Demo.	Residential Permits issued (# of units)	Industrial (approx. sq. feet)	Commercial (approx. sq. feet)	Other (approx. sq. feet)
Covert	yes	1	-	-	-
Fayette	yes	2	-	-	-
Interlaken (Village)	yes	-	-	-	-
Junius	yes	1	-	-	-
Lodi	yes	-	-	1	1
Lodi (Village)	yes	-	-	-	-
Ovid	yes	-	-	-	-
Ovid (Village)	yes	-	-	-	-
Romulus	yes	-	-	-	-
Seneca Falls	yes	-	-	1	-
Seneca Falls (Village)	yes	2	-	-	-
Tyre	yes	-	-	-	-
Varick	yes	-	-	-	-
Waterloo	yes	3	-	-	-
Waterloo (Village)	yes	1	-	-	-

DNA = Data not available.

Source: Seneca County Department of Economic Development & Planning, 2007

Number and Type of Buildings Demolished (2006)

Wayne County

Municipality	Permit / track Demo.	Residential Permits issued (# of units)	Industrial (approx. sq. feet)	Commercial (approx. sq. feet)	Other (approx. sq. feet)
Arcadia	yes	-	-	-	-
Butler	Did not return survey				
Clyde (Village)	Did not return survey				
Galen	yes	4	-	-	3(6500)
Huron	yes	4	-	-	-
Lyons	Did not return survey				
Lyons (Village)	Did not return survey				
Macedon	yes	10	-	-	-
Macedon (Village)	yes	-	-	-	-
Marion	Did not return survey				
Newark (Village)	yes	-	-	3(80448)	-
Ontario	yes	12	-	-	-
Palmyra	yes	6	1 (112)	1	-
Palmyra (Village)	yes	-	-	-	-
Red Creek (Village)	yes	2	-	-	-
Rose	no	-	-	-	-
Savannah	yes	-	-	-	4(2500)
Sodus	yes	-	-	-	-
Sodus (Village)	yes	-	-	1(2600)	-
Sodus Point (Village)	yes	-	-	-	-
Walworth	Did not return survey				
Williamson	Did not return survey				
Wolcott	Did not return survey				
Wolcott (Village)	yes	3	-	2	-

DNA = Data not available.

Source: Municipal representatives, 2007

Number and Type of Buildings Demolished (2006)

Wyoming County

Municipality	Permit / track Demo.	Residential Permits issued (# of units)	Industrial (approx. sq. feet)	Commercial (approx. sq. feet)	Other (approx. sq. feet)
Arcade	yes			-	
Arcade (Village)	yes			4	
Attica	yes			-	
Attica (Village)	yes			1	
Bennington	yes			3	
Castile	yes			2	
Castile (Village)	yes			-	
Covington	yes			-	
Eagle	yes			-	
Gainesville	yes			-	
Gainesville (Village)	yes			-	
Genesee Falls	yes			-	
Java	yes			3	
Middlebury	yes			2	
Orangeville	yes			-	
Perry	yes			1	
Perry (Village)	yes			3	
Pike	yes			1	
Pike (Village)	yes			1	
Sheldon	yes			1	
Silver Springs (Village)	yes			-	
Warsaw	yes			-	
Warsaw (Village)	yes			-	
Wethersfield	yes			-	
Wyoming (Village)	yes			-	

DNA = Data not available.

Source: Wyoming County Building Department, 2007

Number and Type of Buildings Demolished (2006)

Yates County

Municipality	Permit / track Demo.	Residential Permits issued (# of units)	Industrial (approx. sq. feet)	Commercial (approx. sq. feet)	Other (approx. sq. feet)
Barrington	yes	4	-	1(3200)	-
Benton	Did not return survey				
Dresden (Village)	yes	-	-	-	-
Dundee (Village)	yes	-	-	1(8200)	-
Italy	yes	-	-	-	-
Jerusalem	Did not return survey				
Middlesex	Did not return survey				
Milo	yes	3	-	-	-
Penn Yan (Village)	yes	3	-	5(11775)	-
Potter	no	-	-	-	-
Starkey	Did not return survey				
Torrey	yes	6	-	-	-

DNA = Data not available.

Source: Municipal representatives, 2007

Appendix G

Number of Permits Issued for New Residential Units and Industrial, Commercial and Community Service Buildings (2004 - 2006)

Number of Permits Issued for New Residential Units and Industrial, Commercial and Community Service Buildings (2004 - 2006)

Genesee County

Municipality	Residential Units			Industrial Units			Commercial Units			Community Service Units		
	2004	2005	2006	2004	2005	2006	2004	2005	2006	2004	2005	2006
Alabama	7	4	6	-	-	-	-	-	-	-	-	-
Alexander	DNA	4	DNA	DNA	-	DNA	DNA	-	DNA	DNA	-	DNA
Alexander (Village)	-	1	-	-	-	-	-	-	-	-	-	-
Batavia (City)	11	2	4	-	-	1	2	1	2	-	-	-
Batavia	9	12	DNA	1	5	DNA	6	-	DNA	1	-	DNA
Bergen	8	4	4	-	1	2	-	1	-	-	-	-
Bergen (Village)	-	-	-	-	-	-	-	-	-	-	-	-
Bethany	DNA	1	1	DNA	-	-	DNA	-	1	DNA	-	-
Byron	4	5	8	-	-	-	2	1	-	-	-	-
Corfu (Village)	-	2	-	-	-	-	-	-	-	-	-	-
Darien	11	13	7	-	-	-	-	-	-	-	-	-
Elba	1	4	1	-	-	-	-	-	-	-	-	-
Elba (Village)	1	1	-	-	-	-	-	1	-	-	-	-
LeRoy	18	12	10	-	-	-	1	1	-	-	-	-
LeRoy (Village)	4	2	2	-	-	-	6	-	1	-	-	-
Oakfield	3	5	1	-	-	-	-	-	-	-	-	-
Oakfield (Village)	-	-	DNA	-	-	DNA	-	-	DNA	-	-	DNA
Pavilion	DNA	5	DNA	DNA	-	-	DNA	-	-	DNA	-	-
Pembroke	16	8	9	-	-	-	-	2	-	-	-	-
Stafford	6	9	5	-	-	-	2	2	-	-	-	-
County Totals	99	94	58	1	6	3	19	9	4	1	0	0

DNA = Data not available.

Source: Municipal representatives, 2005 - 2007

Number of Permits Issued for New Residential Units and Industrial, Commercial and Community Service Buildings (2004 - 2006)

Livingston County

Municipality	Residential Units			Industrial Units			Commercial Units			Community Service Units		
	2004	2005	2006	2004	2005	2006	2004	2005	2006	2004	2005	2006
Avon	25	22	28	-	-	-	3	3	-	-	-	-
Avon (Village)	DNA	12	9	DNA	-	1	DNA	-	-	DNA	-	-
Caledonia	4	5	4	-	-	1	-	1	-	-	-	-
Caledonia (Village)	1	-	-	-	-	-	1	-	-	-	-	-
Conesus	16	DNA	8	-	DNA	-	-	DNA	-	-	DNA	-
Dansville (Village)	11	2	2	-	-	-	1	-	3	-	-	1
Geneseo	17	DNA	13	-	DNA	-	-	DNA	-	-	DNA	-
Geneseo (Village)	27	DNA	8	-	DNA	-	2	DNA	-	-	DNA	-
Groveland	3	6	5	-	-	-	-	-	-	-	-	1
Leicester	DNA	3	5	DNA	-	-	DNA	-	-	DNA	-	-
Leicester (Village)	DNA	DNA	DNA	DNA	DNA	DNA	DNA	DNA	DNA	DNA	DNA	DNA
Lima	4	9	9	-	-	1	-	2	-	-	-	-
Lima (Village)	-	1	2	-	-	-	-	-	-	-	-	-
Livonia	35	65	26	-	-	-	1	3	2	-	2	-
Livonia (Village)	3	1	DNA	-	-	DNA	-	-	DNA	-	-	DNA
Mount Morris	DNA	DNA	1	DNA	DNA	-	DNA	DNA	-	DNA	DNA	-
Mount Morris (Village)	3	4	1	1	-	-	1	-	-	-	-	-
North Dansville	2	4	1	-	2	-	-	2	1	-	-	-
Nunda	12	4	7	-	-	-	1	-	-	-	-	-
Nunda (Village)	2	-	-	-	-	-	-	-	-	-	-	-
Ossian	DNA	DNA	7	DNA	DNA	-	DNA	DNA	-	DNA	DNA	-
Portage	DNA	DNA	8	DNA	DNA	-	DNA	DNA	-	DNA	DNA	-
Sparta	5	DNA	DNA	-	DNA	DNA	-	DNA	DNA	-	DNA	DNA
Springwater	10	DNA	DNA	-	DNA	DNA	-	DNA	DNA	-	DNA	DNA
West Sparta	DNA	DNA	3	DNA	DNA	-	DNA	DNA	-	DNA	DNA	-
York	11	10	7	1	2	2	-	-	-	-	-	-
County Totals	191	148	154	2	4	5	10	11	6	0	2	2

DNA= Data not available.

Source: Municipal representatives, 2005 - 2007

Number of Permits Issued for New Residential Units and Industrial, Commercial and Community Service Buildings (2004 - 2006)

Monroe County

Municipality	Residential Units			Industrial Units			Commercial Units			Community Service Units		
	2004	2005	2006	2004	2005	2006	2004	2005	2006	2004	2005	2006
Brighton	206	206	95	-	-	-	2	-	3	-	-	-
Brockport (Village)	39	4	6	-	-	1	1	1	-	-	-	-
Chili	127	102	108	DNA*	-	DNA*	31	6	22	-	2	DNA*
Churchville (Village)	7	5	38	-	-	-	-	1	-	-	-	-
Clarkson	19	18	18	-	1	-	-	-	1	-	-	-
East Rochester (T/V)	-	2	9	-	-	-	-	1	-	-	-	-
Fairport (Village)	1	1	-	-	-	1	-	-	-	-	-	-
Gates	16	23	19	4	1	1	-	-	2	-	-	-
Greece	198	220	184	-	-	-	6	11	12	1	1	2
Hamlin	18	9	15	-	-	-	2	2	-	-	1	-
Henrietta	205	206	176	13	20	22	-	-	1	-	-	-
Hilton (Village)	15	13	86	-	-	-	1	-	1	1	-	-
Honeoye Falls (Village)	1	10	10	1	-	-	-	-	-	-	-	-
Irondequoit	33	16	9	-	-	-	3	2	2	-	-	-
Mendon	33	25	22	-	-	-	-	-	-	-	-	-
Ogden	65	62	60	-	-	-	-	-	-	-	-	-
Parma	61	62	44	-	2	-	-	2	-	-	2	-
Penfield	108	140	110	DNA*	DNA*	DNA*	34	21	30	-	-	DNA*
Perinton	78	64	52	-	-	-	7	2	3	-	1	-
Pittsford	119	95	57	-	-	-	-	-	-	2	2	1
Pittsford (Village)	-	-	-	-	-	-	-	-	-	-	-	-
Riga	8	13	7	1	1	2	-	-	-	-	-	-
Rochester (City)	97	93	77	1	1	-	1	-	1	1	3	-
Rush	8	11	6	-	-	-	-	-	-	-	-	-
Scottsville (Village)	5	3	2	-	-	-	-	-	-	-	-	-
Spencerport (Village)	3	1	1	-	-	-	-	-	-	-	-	-
Sweden	4	7	7	-	-	-	3	-	3	-	-	-
Webster	272	233	187	-	-	-	18	3	6	-	-	-
Webster (Village)	-	-	20	1	1	-	-	-	-	-	-	-
Wheatland	7	12	4	-	-	-	-	-	-	-	-	-
County Totals	1,753	1,656	1,429	21	27	27	109	52	87	5	12	3

*The towns of Chili and Penfield did not specify between Commercial and Industrial permits.

DNA= Data not available.

Source: Municipal representatives, 2005 - 2007

Number of Permits Issued for New Residential Units and Industrial, Commercial and Community Service Buildings (2004 - 2006)

Ontario County

Municipality	Residential Units			Industrial Units			Commercial Units			Community Service Units		
	2004	2005	2006	2004	2005	2006	2004	2005	2006	2004	2005	2006
Bloomfield (Village)	DNA	1	-	DNA	-	-	DNA	-	-	DNA	-	-
Bristol	10	9	10	1	-	-	-	-	-	-	-	-
Canadice	5	7	8	-	-	-	-	-	-	-	-	-
Canandaigua (City)	33	33	7	-	-	-	3	-	1	-	-	-
Canandaigua	78	96	170	1	-	-	3	3	-	-	-	-
Clifton Springs (Village)	1	3	-	-	-	-	-	-	-	-	-	-
East Bloomfield	11	14	10	-	2	1	-	-	-	-	-	-
Farmington	51	43	113	-	-	-	1	-	-	-	-	-
Geneva (City)	2	-	1	-	-	-	1	-	1	-	-	-
Geneva	15	6	10	1	-	-	-	2	1	-	1	-
Gorham	25	43	30	-	-	-	-	-	-	-	-	-
Hopewell	11	25	13	-	-	-	-	3	2	-	-	-
Manchester	33	29	23	-	-	-	-	-	-	-	-	-
Manchester (Village)	4	5	2	-	-	-	-	-	-	-	-	-
Naples	8	10	7	-	-	-	-	-	-	-	-	-
Naples (Village)	-	1	1	-	-	-	-	-	1	-	-	-
Phelps	26	14	11	2	2	2	5	-	-	-	-	-
Phelps (Village)	DNA	4	-	-	-	-	1	-	-	-	2	-
Richmond	13	8	19	-	-	-	-	-	-	-	-	-
Rushville (Village)	DNA	-	-	DNA	-	-	DNA	-	-	DNA	-	-
Seneca	7	6	7	-	1	-	1	2	-	-	-	-
Shortsville (Village)	6	25	1	-	-	-	-	-	-	-	-	-
South Bristol	16	16	14	-	-	-	-	-	-	-	-	-
Victor	248	118	78	2	6	1	3	4	4	-	-	-
Victor (Village)	DNA	9	8	DNA	3	-	DNA	-	-	-	-	-
West Bloomfield	14	16	3	-	-	-	-	-	-	-	-	-
County Totals	617	541	546	7	14	4	17	14	10	0	3	0

DNA = Data not available.

Source: Municipal representatives, 2005 - 2007

Number of Permits Issued for New Residential Units and Industrial, Commercial and Community Service Buildings (2004 - 2006)

Orleans County

Municipality	Residential Units			Industrial Units			Commercial Units			Community Service Units		
	2004	2005	2006	2004	2005	2006	2004	2005	2006	2004	2005	2006
Albion	3	5	1	-	1	-	-	1	-	-	-	-
Albion (Village)	3	8	3	-	-	-	2	1	-	-	-	1
Barre	1	DNA	3	-	DNA	-	-	DNA	-	-	DNA	-
Carlton	16	15	11	-	-	-	-	-	-	-	-	-
Clarendon	12	5	DNA	-	-	DNA	-	-	DNA	-	-	DNA
Gaines	5	3	4	-	-	-	-	-	-	-	-	-
Holley (Village)	-	DNA	DNA	2	DNA	DNA	-	DNA	DNA	-	DNA	DNA
Kendall	3	DNA	3	-	DNA	-	-	DNA	1	-	DNA	-
Lyndonville (Village)	DNA	1	-	DNA	-	-	DNA	-	-	DNA	-	-
Medina (Village)	4	DNA	5	-	DNA	-	-	DNA	1	-	DNA	-
Murray	7	DNA	DNA	-	DNA	DNA	1	DNA	DNA	-	DNA	DNA
Ridgeway	7	8	4	-	-	-	-	1	-	1	-	-
Shelby	5	5	4	-	-	-	-	1	-	-	-	-
Yates	4	8	6	-	-	-	-	1	-	-	-	-
County Totals	70	58	44	2	1	0	3	5	2	1	0	1

DNA = Data not available.

Source: Municipal representatives, 2005 - 2007

Number of Permits Issued for New Residential Units and Industrial, Commercial and Community Service Buildings (2004 - 2006)

Seneca County

Municipality	Residential Units			Industrial Units			Commercial Units			Community Service Units		
	2004	2005	2006	2004	2005	2006	2004	2005	2006	2004	2005	2006
Covert	8	7	12	-	-	-	-	1	-	-	1	-
Fayette	19	19	19	-	-	-	2	3	1	-	1	-
Interlaken (Village)	-	DNA	DNA	-	DNA	DNA	-	DNA	DNA	-	DNA	DNA
Junius	10	8	4	-	-	-	1	1	2	-	1	-
Lodi	11	13	14	-	-	-	1	1	1	-	-	-
Lodi (Village)	-	DNA	DNA	-	DNA	DNA	-	DNA	DNA	-	DNA	DNA
Ovid	9	13	5	-	-	-	-	-	2	1	-	-
Ovid (Village)	-	DNA	DNA	-	DNA	DNA	-	DNA	DNA	-	DNA	DNA
Romulus	20	8	11	-	-	-	2	1	2	-	-	-
Seneca Falls	9	4	10	-	1	-	-	2	2	-	-	-
Seneca Falls (Village)	4	6	8	-	-	-	-	-	-	-	-	-
Tyre	7	4	2	-	-	-	2	-	1	-	-	-
Varick	12	6	10	-	-	-	8	1	-	-	-	-
Waterloo	19	15	18	-	-	-	4	2	2	-	1	-
Waterloo (Village)	2	1	42	-	-	-	1	-	-	1	-	-
County Totals	130	104	155	0	1	0	21	12	13	2	4	0

DNA = Data not available.

Source: Seneca County Department of Economic Development & Planning, 2005 - 2007

Number of Permits Issued for New Residential Units and Industrial, Commercial and Community Service Buildings (2004 - 2006)

Wayne County

Municipality	Residential Units			Industrial Units			Commercial Units			Community Service Units		
	2004	2005	2006	2004	2005	2006	2004	2005	2006	2004	2005	2006
Arcadia	18	3	12	-	-	-	-	-	-	-	-	-
Butler	3	DNA	DNA	1	DNA	DNA	2	DNA	DNA	-	DNA	DNA
Clyde (Village)	1	-	DNA	1	-	DNA	-	-	DNA	-	-	DNA
Galen	5	14	3	2	-	2	1	-	-	-	-	-
Huron	10	12	12	-	-	-	-	-	-	-	-	-
Lyons	10	8	DNA	-	-	DNA	-	-	DNA	-	1	DNA
Lyons (Village)	0	DNA	DNA	-	DNA	DNA	-	DNA	DNA	-	DNA	DNA
Macedon	24	37	18	2	1	-	3	-	1	-	-	-
Macedon (Village)	1	2	-	-	-	-	-	-	-	-	-	-
Marion	7	DNA	DNA	-	DNA	DNA	-	DNA	DNA	-	DNA	DNA
Newark (Village)	3	2	3	-	1	-	1	3	3	-	-	-
Ontario	72	52	42	-	-	2	2	2	4	-	-	-
Palmyra	DNA	56	14	DNA	-	1	DNA	-	-	DNA	-	-
Palmyra (Village)	8	1	-	-	-	-	1	-	-	-	-	-
Red Creek (Village)	1	-	-	-	-	-	-	-	-	-	-	-
Rose	6	9	6	-	-	-	-	-	-	-	-	-
Savannah	2	4	1	-	-	-	1	-	-	-	-	-
Sodus	16	20	12	-	-	-	-	5	-	-	-	-
Sodus (Village)	1	1	-	-	-	-	-	-	-	-	-	-
Sodus Point (Village)	3	4	1	-	-	-	-	1	-	-	-	-
Walworth	43	35	DNA	-	-	DNA	1	1	DNA	-	-	DNA
Williamson	31	24	DNA	2	2	DNA	-	-	DNA	-	-	DNA
Wolcott	17	2	DNA	-	-	DNA	-	1	DNA	-	-	DNA
Wolcott (Village)	1	5	7	2	-	-	-	-	-	-	-	-
County Totals	283	291	131	10	4	5	12	13	8	0	1	0

DNA = Data not available.

Source: Municipal representatives, 2005 - 2007

Number of Permits Issued for New Residential Units and Industrial, Commercial and Community Service Buildings (2004 - 2006)

Wyoming County

Municipality	Residential Units			Industrial Units			Commercial Units			Community Service Units		
	2004	2005	2006	2004	2005	2006	2004	2005	2006	2004	2005	2006
Arcade	12	12	10	DNA	DNA	DNA	1	1	4	DNA	DNA	DNA
Arcade (Village)	3	2	2	DNA	DNA	DNA	22	7	3	DNA	DNA	DNA
Attica	5	4	1	DNA	DNA	DNA	3	-	-	DNA	DNA	DNA
Attica (Village)	2	3	0	DNA	DNA	DNA	-	2	3	DNA	DNA	DNA
Bennington	12	12	13	DNA	DNA	DNA	-	-	2	DNA	DNA	DNA
Castile	4	5	6	DNA	DNA	DNA	1	2	2	DNA	DNA	DNA
Castile (Village)	2	2	1	DNA	DNA	DNA	1	-	1	DNA	DNA	DNA
Covington	2	5	-	DNA	DNA	DNA	-	4	-	DNA	DNA	DNA
Eagle	5	5	9	DNA	DNA	DNA	-	2	8	DNA	DNA	DNA
Gainesville	2	5	3	DNA	DNA	DNA	-	3	-	DNA	DNA	DNA
Gainesville (Village)	-	-	-	DNA	DNA	DNA	-	-	-	DNA	DNA	DNA
Genesee Falls	2	1	-	DNA	DNA	DNA	-	-	-	DNA	DNA	DNA
Java	6	7	7	DNA	DNA	DNA	1	2	5	DNA	DNA	DNA
Middlebury	2	4	3	DNA	DNA	DNA	-	1	1	DNA	DNA	DNA
Orangeville	8	7	2	DNA	DNA	DNA	-	-	-	DNA	DNA	DNA
Perry	3	8	3	DNA	DNA	DNA	2	-	2	DNA	DNA	DNA
Perry (Village)	1	-	1	DNA	DNA	DNA	1	9	-	DNA	DNA	DNA
Pike	5	-	2	DNA	DNA	DNA	2	2	1	DNA	DNA	DNA
Pike (Village)	-	-	1	DNA	DNA	DNA	1	-	-	DNA	DNA	DNA
Sheldon	8	10	2	DNA	DNA	DNA	5	6	1	DNA	DNA	DNA
Silver Springs (Village)	-	1	-	DNA	DNA	DNA	1	3	3	DNA	DNA	DNA
Warsaw	7	10	6	DNA	DNA	DNA	2	3	2	DNA	DNA	DNA
Warsaw (Village)	3	-	-	-	DNA	DNA	-	-	-	-	DNA	DNA
Wethersfield	2	2	-	DNA	DNA	DNA	2	5	-	DNA	DNA	DNA
Wyoming (Village)	-	-	-	DNA	DNA	DNA	-	2	2	DNA	DNA	DNA
County Totals	96	105	72	DNA	DNA	DNA	45	54	40	DNA	DNA	DNA

*Wyoming County did not specify between Commercial and Industrial permits.

DNA = Data not available.

Source: Wyoming County Building Department, 2005 - 2007

Number of Permits Issued for New Residential Units and Industrial, Commercial and Community Service Buildings (2004 - 2006)

Yates County

Municipality	Residential Units			Industrial Units			Commercial Units			Community Service Units		
	2004	2005	2006	2005	2005	2006	2004	2005	2006	2004	2005	2006
Barrington	15	16	22	-	-	-		-	-	-	-	-
Benton	DNA	DNA	DNA	DNA	DNA	DNA	DNA	DNA	DNA	DNA	DNA	DNA
Dresden (Village)	DNA	1	-	-	-	-	DNA	-	-	DNA	-	-
Dundee (Village)	3	DNA	-	DNA	DNA	-	-	DNA	1	-	DNA	1
Italy	9	6	7	-	-	-	-	-	-	-	-	-
Jerusalem	26	DNA	DNA	DNA	DNA	DNA	2	DNA	DNA	-	DNA	DNA
Middlesex	5	4	DNA	-	-	DNA	-	-	DNA	-	-	DNA
Milo	10	16	12	-	-	-	-	-	-	-	-	-
Penn Yan (Village)	44	DNA	8	DNA	DNA	1	3	DNA	2	1	DNA	-
Potter	5	DNA	3	DNA	DNA	-	-	DNA	-	-	DNA	-
Starkey	9	3	DNA	-	-	DNA	2	-	DNA	-	-	DNA
Torrey	7	7	5	2	2	1	-	-	-	-	-	-
County Totals	133	53	57	1	2	2	7	0	3	1	0	1

DNA = Data not available.

Source: Municipal representatives, 2005 - 2007

Appendix H

Transportation Management Area Time Series Analysis Data

Total Number of New Residential Units Permitted in TMA, 1994-2006

Monroe County	1994	1995	1996	1997	1998	1999	2000	2001	2002	2003	2004	2005	2006	Total (1994-2006)
Brighton	11	121	25	399	110	12	55	16	19	13	206	206	95	1,288
Brockport (Village)	13	9	0	29	1	2	1	1	0	0	39	4	6	105
Chili	386	78	236	113	105	115	125	95	90	131	127	102	108	1,811
Churchville (Village)	1	3	18	13	17	15	8	7	6	6	7	5	38	144
Clarkson	52	31	63	54	48	75	32	43	42	24	19	18	18	519
East Rochester (TV)	1	1	0	1	0	0	DNA	2	1	1	0	2	9	18
Fairport (Village)	0	0	0	2	2	5	5	3	6	4	1	1	0	29
Gates	108	198	48	163	43	59	37	0	0	24	16	23	19	738
Greece	265	253	430	222	245	293	226	215	249	266	198	220	184	3,266
Hamlin	33	22	17	17	10	10	DNA	11	8	10	18	9	15	180
Henrietta	85	45	69	67	110	388	303	147	167	161	205	206	176	2,129
Hilton (Village)	25	50	16	8	5	10	31	36	25	18	15	13	86	338
Honeoye Falls (Village)	4	4	8	10	8	15	10	12	3	3	1	10	10	98
Irondequoit	85	DNA	140	DNA	DNA	43	53	25	40	28	33	16	9	472
Mendon	38	36	34	34	48	59	45	52	50	33	33	25	22	509
Ogden	84	78	95	52	65	81	106	71	85	82	65	62	60	986
Parma	34	27	45	40	28	39	57	58	66	74	61	62	44	635
Penfield	123	119	145	164	188	196	169	152	140	131	108	140	110	1,885
Perinton	190	185	154	158	178	476	191	134	145	122	78	64	52	2,127
Pittsford (Town & Village)	90	153	86	89	81	93	72	79	102	142	119	95	57	1,258
Riga	17	17	23	12	8	12	12	6	19	10	8	13	7	164
Rochester (City)	61	65	98	54	20	35	75	39	36	20	97	93	77	770
Rush	19	6	11	15	14	16	12	19	15	11	8	11	6	163
Scottsville (Village)	1	2	9	4	33	0	0	0	3	5	5	3	2	67
Spencerport (Village)	3	9	5	0	5	7	12	0	0	8	3	1	1	54
Sweden	36	13	16	26	18	18	18	22	21	24	4	7	7	230
Webster	257	206	270	204	488	308	342	227	286	372	272	233	187	3,652
Webster (Village)	2	1	0	1	0	0	0	4	26	11	0	-	20	65
Wheatland	5	5	4	7	3	3	7	1	DNA	3	7	12	4	61
Monroe County Total	2,029	1,737	2,065	1,958	1,881	2,385	2,004	1,477	1,650	1,737	1,753	1,656	1,429	23,761

DNA = Data not available

Source: Municipal Representatives, 1995-2007 & Rochester Home Builders' Association, 1995-2000

Total Number of New Residential Units Permitted in TMA, 1994-2006 (continued)

Livingston County	1994	1995	1996	1997	1998	1999	2000	2001	2002	2003	2004	2005	2006	Total (1994-2006)
Avon	19	28	14	16	11	14	20	20	22	37	25	22	28	276
Avon (Village)	DNA	DNA	7	39	41	8	10	9	9	DNA	DNA	12	9	144
Caledonia	17	9	9	6	4	9	11	7	9	11	4	5	4	105
Caledonia (Village)	DNA	DNA	DNA	DNA	0	1	DNA	0	0	0	1	0	0	2
Lima	60	48	8	14	12	14	7	4	8	4	4	9	9	201
Lima (Village)	DNA	DNA	27	10	11	12	8	6	8	3	0	1	2	88
Livingston County Total	96	85	65	85	79	58	56	46	56	55	34	49	52	816

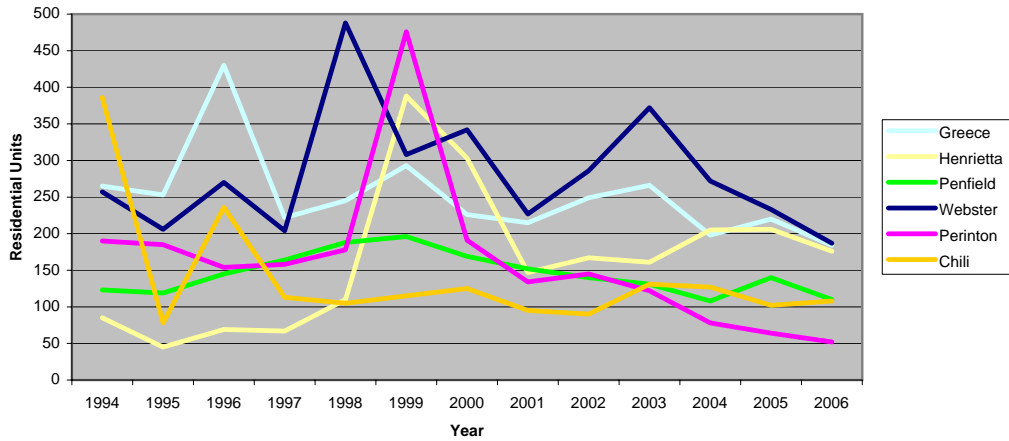
Ontario County	1994	1995	1996	1997	1998	1999	2000	2001	2002	2003	2004	2005	2006	Total (1994-2006)
Bloomfield (Village)	DNA	DNA	DNA	DNA	DNA	26	1	3	3	18	DNA	1	0	52
Canandaigua (City)	18	8	49	15	20	27	32	39	29	19	33	33	7	329
Canandaigua	39	19	58	124	63	79	62	32	54	90	78	96	170	964
East Bloomfield	18	7	10	9	12	20	14	18	22	12	11	14	10	177
Farmington	45	28	30	15	66	62	33	44	69	44	51	43	113	643
Victor	56	62	102	82	128	210	162	192	187	196	248	118	78	1,821
Victor (Village)	DNA	DNA	15	8	14	35	7	18	23	0	DNA	9	8	137
West Bloomfield	6	3	8	7	DNA	10	9	20	18	21	14	16	3	135
Ontario County Total	182	127	272	260	303	469	320	366	405	400	435	330	389	4,258

Wayne County	1994	1995	1996	1997	1998	1999	2000	2001	2002	2003	2004	2005	2006	Total (1994-2006)
Macedon	25	26	40	29	34	36	60	43	36	30	24	37	18	438
Macedon (Village)	DNA	DNA	DNA	4	2	0	9	10	4	4	1	2	0	36
Ontario	173	170	49	60	69	69	71	54	65	52	72	52	42	998
Walworth	102	107	98	83	71	84	40	49	49	38	43	35	DNA	799
Wayne County Total	300	303	187	176	176	189	180	156	154	124	140	126	60	2,271
TMA Totals	2,607	2,252	2,589	2,479	2,439	3,101	2,560	2,045	2,265	2,316	2,362	2,161	1,930	31,106

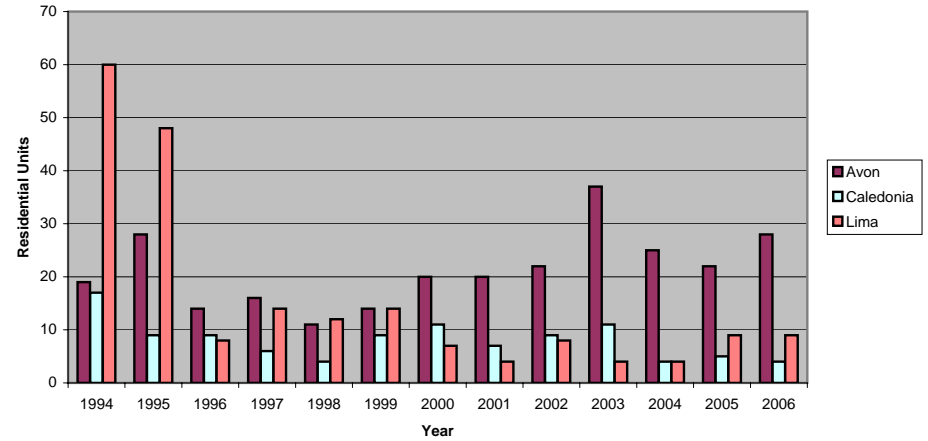
DNA = Data not available

Source: Municipal Representatives, 1995-2007

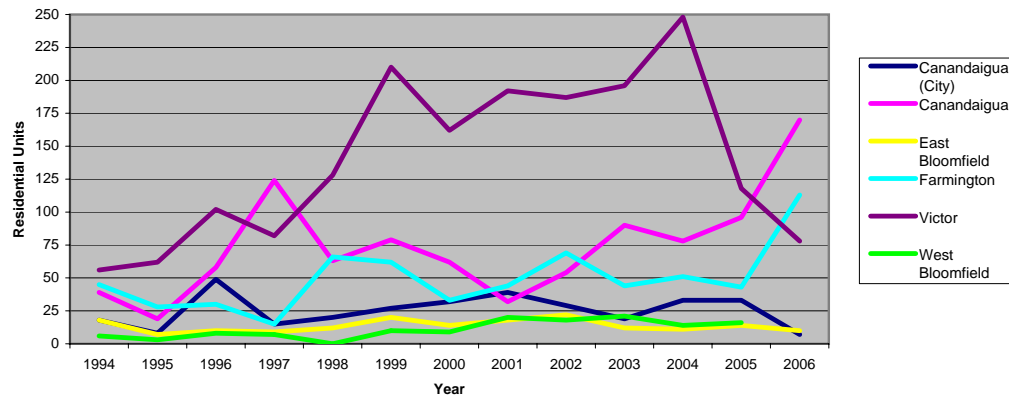
Towns with the Largest Numbers of Permitted Residential Units in Monroe County (1994 - 2006)



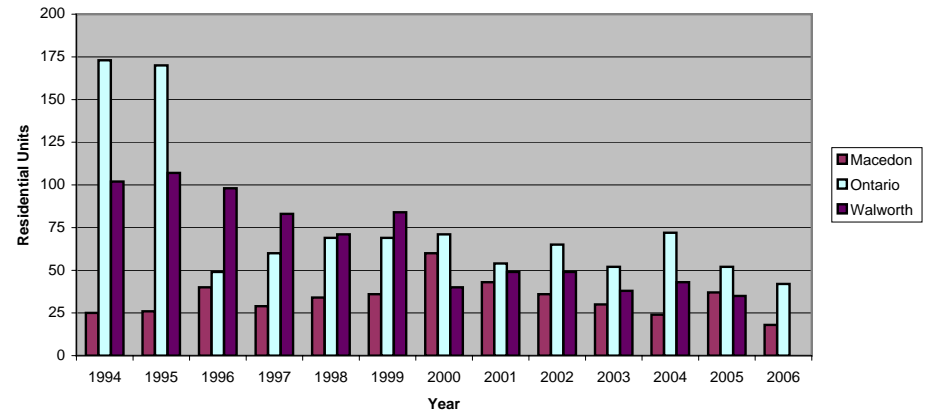
Number of Permitted Residential Units in Livingston County TMA Towns (1994 - 2006)



Number of Permitted Residential Units in Ontario County TMA Towns & City of Canandaigua (1994 - 2006)



Number of Permitted Residential Units in Wayne County TMA Towns (1994 - 2006)



Total Number of New Industrial Buildings Permitted in TMA (outside Monroe County), 1994-2006

Livingston County	1994	1995	1996	1997	1998	1999	2000	2001	2002	2003	2004	2005	2006	Total (1994-2006)
Avon	0	2	0	0	1	4	0	0	0	0	0	0	0	7
Avon (Village)	DNA	DNA	0	0	1	2	0	1	0	0	DNA	0	1	5
Caledonia	0	0	0	0	1	0	1	0	0	0	4	0	1	7
Caledonia (Village)	DNA	DNA	DNA	DNA	1	0	0	1	0	0	0	0	0	2
Lima	0	0	0	1	0	0	0	0	0	1	0	0	1	3
Lima (Village)	DNA	DNA	0	0	0	1	0	0	1	0	0	0	0	2
Livingston County Total	0	2	0	1	4	7	1	2	1	1	4	0	3	26

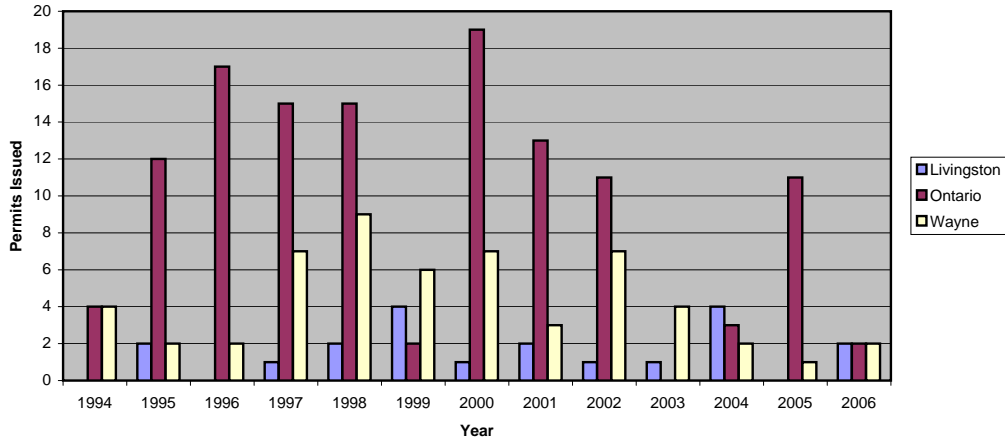
Ontario County	1994	1995	1996	1997	1998	1999	2000	2001	2002	2003	2004	2005	2006	Total (1994-2006)
Bloomfield (Village)	DNA	DNA	DNA	DNA	0	1	0	1	0	DNA	DNA	0	0	2
Canandaigua (City)	0	0	2	0	0	0	0	0	0	0	0	0	0	2
Canandaigua	1	3	5	3	0	0	3	2	0	0	1	0	0	18
East Bloomfield	0	4	0	0	0	0	3	0	0	0	0	2	1	10
Farmington	0	0	1	1	1	0	4	2	1	0	0	0	0	10
Victor	3	5	11	11	14	1	9	9	10	0	2	6	1	82
Victor (Village)	DNA	DNA	0	2	0	0	0	0	0	0	DNA	3	0	5
West Bloomfield	0	0	0	0	DNA	1	0	0	0	0	0	0	0	1
Ontario County Total	4	12	19	17	15	3	19	14	11	0	3	11	2	130

Wayne County	1994	1995	1996	1997	1998	1999	2000	2001	2002	2003	2004	2005	2006	Total (1994-2006)
Macedon	0	0	0	2	7	2	6	0	5	1	2	1	0	26
Macedon (Village)	DNA	DNA	DNA	0	0	0	0	0	0	0	0	0	0	0
Ontario	4	2	2	5	2	4	1	3	2	3	0	0	2	30
Walworth	0	0	0	0	0	0	0	0	0	0	0	0	DNA	0
Wayne County Total	4	2	2	7	9	6	7	3	7	4	2	1	2	56
TMA (outside Monroe County) Totals	8	16	21	25	28	16	27	19	19	5	9	12	7	212

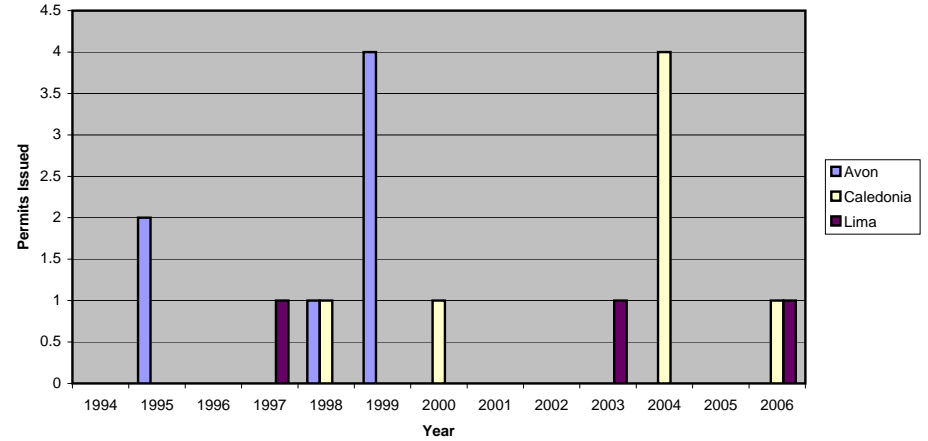
DNA = Data not available

Source: Municipal Representatives, 1995-2007

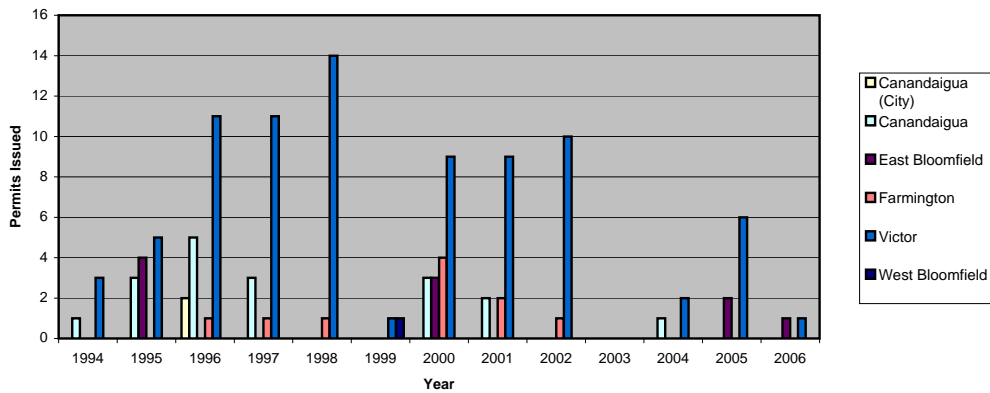
Permits Issued for Industrial Buildings in TMA (outside Monroe County) Towns by County (1994 - 2006)



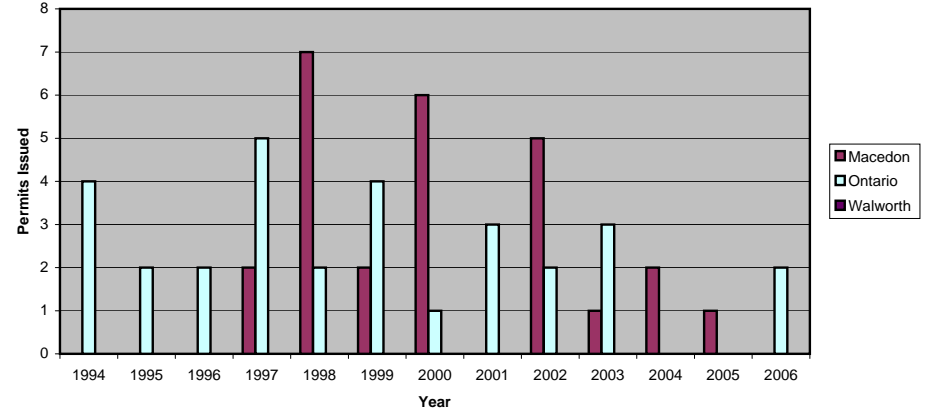
Permits Issued for Industrial Buildings in Livingston County TMA Towns (1994 - 2006)



Permits Issued for Industrial Buildings in Ontario County TMA Towns & City of Canandaigua (1994 - 2006)



Permits Issued for Industrial Buildings in Wayne County TMA Towns (1994 - 2006)



Total Number of New Commercial Buildings Permitted in TMA (outside Monroe County), 1994-2006

Livingston County	1994	1995	1996	1997	1998	1999	2000	2001	2002	2003	2004	2005	2006	Total (1994-2006)
Avon	7	5	3	1	3	1	1	1	0	1	3	3	0	29
Avon (Village)	DNA	DNA	0	1	1	0	0	0	1	DNA	DNA	0	0	3
Caledonia	1	1	0	0	0	0	0	0	0	0	0	1	0	3
Caledonia (Village)	DNA	DNA	DNA	DNA	0	0	0	0	0	0	1	0	0	1
Lima	2	1	1	0	0	0	1	0	0	0	0	2	0	7
Lima (Village)	DNA	DNA	0	0	1	0	0	0	0	0	0	0	0	1
Livingston County Total	10	7	4	2	5	1	2	1	1	1	4	6	0	44

Ontario County	1994	1995	1996	1997	1998	1999	2000	2001	2002	2003	2004	2005	2006	Total (1994-2006)
Bloomfield (Village)	DNA	DNA	DNA	DNA	0	1	0	0	0	0	DNA	0	0	1
Canandaigua (City)	0	0	0	2	5	1	17	0	2	1	3	0	1	32
Canandaigua	2	5	1	2	1	0	1	0	2	0	3	3	0	20
East Bloomfield	1	5	0	2	1	0	1	3	0	2	0	0	0	15
Farmington	24	8	0	0	0	0	2	0	0	0	1	0	0	35
Victor	47	13	68	29	29	14	12	4	36	0	3	4	4	263
Victor (Village)	DNA	DNA	0	1	0	0	0	1	0	0	DNA	0	0	2
West Bloomfield	2	0	0	0	DNA	0	0	0	0	0	0	0	0	2
Ontario County Total	76	31	69	36	36	16	33	8	40	3	10	7	5	370

Wayne County	1994	1995	1996	1997	1998	1999	2000	2001	2002	2003	2004	2005	2006	Total (1994-2006)
Macedon	0	0	0	0	1	2	1	0	0	3	3	0	3	13
Macedon (Village)	DNA	DNA	DNA	0	0	0	0	0	0	0	0	0	0	0
Ontario	2	3	6	4	7	4	2	4	3	0	2	2	4	43
Walworth	2	4	1	1	3	1	2	0	0	0	1	1	DNA	16
Wayne County Total	4	7	7	5	11	7	5	4	3	3	6	3	7	72
TMA (outside Monroe County) Totals	90	45	80	43	52	24	40	13	47	7	20	16	12	486

DNA = Data not available

Source: Municipal Representatives, 1995-2007

