

Appendices

Appendix A: Number, Square Footage and Value of Permits Issued for New Residential Buildings (2007)	A - 1
Appendix B: Number, Square Footage and Value of Permits Issued for New Industrial Buildings (2007)	B - 1
Appendix C: Number, Square Footage and Value of Permits Issued for New Commercial Buildings (2007)	C - 1
Appendix D: Number, Square Footage and Value of Permits Issued for New Community Service Buildings (2007)	D - 1
Appendix E: Number, Square Footage and Value of Permits Issued for New Buildings Not Elsewhere Classified (2007)	E - 1
Appendix F: Number and type of Buildings Demolished or Abandoned (2007)	F - 1
Appendix G: Number of Permits Issued for New Residential Units and Industrial, Commercial and Community Service Buildings (2005 – 2007)	G - 1
Appendix H: Transportation Management Area Time Series Analysis Data	H - 1

Appendix A

Number, Square Footage and Value of Permits Issued for New Residential Buildings (2007)

Number, Square Footage, and Value of Permits Issued for New Residential Buildings (2007)

Genesee County

Municipality	Single Family	Total Square Feet	Total Value (\$)	Two Family	Total Square Feet	Total Value (\$)	Three or Four Family (# of Units)	Total Square Feet	Total Value (\$)	Five or More Family (# of Units)	Total Square Feet	Total Value (\$)	Mnftcd/ Mobile Homes	Total Square Feet	Total Value (\$)	Total Res Permits	Total Units
Alabama	4	10,079	\$552,000	-			1 (4)	7,704	\$280,000	-			-			5	8
Alexander	2	3,347	\$350,000	-			-			-			2	3,030	\$120,000	4	4
Alexander (Village)	-			-			-			-			-			0	0
Batavia (City)	3	7,482	\$359,000	-			-			2(47)	39,627	\$3,869,000	-			5	50
Batavia	7	17,063	\$1,387,000	6 (12)	13,440	\$1,000,000	-			2 (16)		\$4,000,000	-			15	35
Bergen	6	DNA	DNA	-			-			-			2	DNA	DNA	8	8
Bergen (Village)	-			-			-			-			-			0	0
Bethany	DNA																
Byron	DNA																
Corfu (Village)	-			-			-			-			-			0	0
Darien	8	15,528	\$1,379,500	-			-			-			-			8	8
Elba	-			-			-			-			-			0	0
Elba (Village)	1	2,300	\$210,000	-			-			-			-			1	1
LeRoy	9	19,589	\$1,688,000	-			-			-			2	2,324	\$93,000	11	11
LeRoy (Village)	-			-			-			-			-			0	0
Oakfield	2	3,800	\$315,000	-			-			-			1	1,800	\$105,000	3	3
Oakfield (Village)	-			-			-			-			-			0	0
Pavilion	DNA																
Pembroke	4	8,770	\$675,000	-			-			-			-			4	4
Stafford	5	DNA	DNA	-			-			-			-			5	5
Totals	51			6 (12)			1 (4)			4(63)			7			69	137

DNA = Data not available.

Source: Municipal Representatives, 2008

Number, Square Footage, and Value of Permits Issued for New Residential Buildings (2007)

Livingston County

Municipality	Single Family	Total Square Feet	Total Value (\$)	Two Family	Total Square Feet	Total Value (\$)	Three or Four Family (# of Units)	Total Square Feet	Total Value (\$)	Five or More Family (# of Units)	Total Square Feet	Total Value (\$)	Mnftcd/ Mobile Homes	Total Square Feet	Total Value (\$)	Total Permits	Total Units
Avon	2	4,247	\$140,000	-			-			-			-			2	2
Avon (Village)	6	12,218	\$1,048,040	-			-			-			-			6	6
Caledonia	2	2,500	\$266,000	-			-			-			3	32,000	\$126,500	5	5
Caledonia (Village)	-			-			-			-			-			0	0
Conesus	6	11,224	\$782,500	-			-			-			2	24,000	\$2,600	8	8
Dansville (Village)	2			-			-			-			1			3	3
Geneseo	3	5,504	\$750,000	-			-			-			1	1,568	\$80,000	4	4
Geneseo (Village)	1	2,400	\$200,000	-			-			-			-			1	1
Groveland	3	6,220	\$1,260,000	-			-			-			-			3	3
Leicester	1	1,992	\$125,000	-			-			-			4	5,434	\$121,280	5	5
Leicester (Village)	DNA																
Lima	5	9,364	\$697,000	-			-			-			-			5	5
Lima (Village)	3	3,828	\$251,484	-			-			-			-			3	3
Livonia	23	43,800	\$2,605,696	-			-			-			4	3,800	\$47,500	27	27
Livonia (Village)	1	2,800	\$244,900	1 (2)	1,550	\$80,000	-			-			-			2	3
Mount Morris	-			-			-			-			3			3	3
Mount Morris (Village)	1	1,900	\$120,000	-			-			-			-			1	1
North Dansville	DNA																
Nunda	4	10,640	\$798,200	-			-			-			2	2,380	\$164,000	6	6
Nunda (Village)	1	1,288	\$50,000	-			-			2 (24)	56,792	\$2,000,000	-			3	25
Ossian	2	4,108	\$215,000	-			-			-			-			2	2
Portage	DNA																
Sparta	-			-			-			-			-			0	0
Springwater	7	10,500	\$1,470,000	-			-			-			4	4,700	\$200,000	11	11
West Sparta	1	3,000	\$145,000	-			-			-			3	2,940	\$55,000	4	4
York	3	4,090	\$270,000	-			-			-			5	6,562	\$448,000	8	8
Totals	77			1 (2)			0			2 (24)			32			112	135

DNA = Data not available.

Source: Municipal Representatives, 2007

Number, Square Footage, and Value of Permits Issued for New Residential Buildings (2007)

Monroe County

Municipality	Single Family	Total Square Feet	Total Value (\$)	Two Family	Total Square Feet	Total Value (\$)	Three or Four Family (# of Units)	Total Square Feet	Total Value (\$)	Five or More Family (# of Units)	Total Square Feet	Total Value (\$)	Mnftcd/ Mobile Homes	Total Square Feet	Total Value (\$)	Total Permits	Total Units
Brighton	11	44,447	\$3,750,000	-			-			-			-			11	11
Brockport (Village)	10	15,683	\$1,650,000	-			-			-			-			10	10
Chili	71	DNA	\$14,053,890	-			1 (4)		\$320,000	1 (5)		\$425,000	-			73	80
Churchville (Village)	7	17,300	\$860,000	-			-			-			-			7	7
Clarkson	16	40,000	\$2,800,000	-			-			-			-			16	16
East Rochester (T/V)	DNA																
Fairport (Village)	1	3,772	\$370,000	-			-			-			-			1	1
Gates	8	2,000	\$240,000	-			-			-			-			8	8
Greece	116	DNA	\$22,890,005	5 (10)	DNA	\$1,205,000	-			-			-			121	126
Hamlin	13	26,000	\$2,473,000	-			-			-			15	15,000	\$600,000	28	28
Henrietta	145	281,413	\$25,784,554	2 (4)	6,705	DNA	1 (3)	5,606	DNA	2 (111)	143,435	DNA	-			150	263
Hilton (Village)	16	22,881	\$2,454,300	-			-			-			-			16	16
Honeoye Falls (Village)	-			1(2)		\$300,000	1 (3)		\$700,000	2(10)		\$1,800,000	-			4	15
Irondequoit	10	DNA	\$960,000	-			-			-			-			10	10
Mendon	16	109,067	\$7,435,000	-			-			-			-			16	16
Ogden	38	DNA	\$7,874,885	-			-			-			-			38	38
Parma	31	58,640	\$4,942,754	-			-			-			1	1,084	\$4,000	32	32
Penfield	81	DNA	\$22,326,000	-			1* (3)	DNA	\$541,756	7* (35)	DNA	\$6,320,493	9		\$222,000	98	128
Perinton	47	DNA	\$10,636,500	1(2)	DNA	\$275,520	-			-			-			48	49
Pittsford	49	212,400	\$18,451,445	-			-			-			-			49	49
Pittsford (Village)	-			-			-			-			-			0	0
Riga	5	DNA	DNA	-			-			-			-			5	5
Rochester (City)	40	DNA	\$4,668,655	1(2)	DNA	\$463,000	-			2 (42)		\$4,200,000	-			43	84
Rush	3	6,000	\$790,000	-			-			-			-			3	3
Scottsville (Village)	2	3,870	\$200,000	-			-			-			-			2	2
Spencerport (Village)	2	DNA	\$510,000	-			1 (3)	DNA	\$600,000	-			-			3	5
Sweden	5	DNA	DNA	-			-			-			-			5	5
Webster	139	336,662	\$31,568,789	1 (2)	2,956	\$310,000	-			-			-			140	141
Webster (Village)	5	9,085	\$550,000	2 (4)	8,000	\$240,000	-			-			-			7	9
Wheatland	2	6,902	\$400,000	-			-			-			1	1,280	\$60,000	3	3
Totals	889			13 (26)			5 (16)			14 (203)			26			947	1,160

DNA = Data not available.

*Penfield townhouse building structures were estimated, units are exact and were permitted individually

Source: Municipal Representatives, 2007

Number, Square Footage, and Value of Permits Issued for New Residential Buildings (2007)

Ontario County

Municipality	Single Family	Total Square Feet	Total Value (\$)	Two Family	Total Square Feet	Total Value (\$)	Three or Four Family (# of Units)	Total Square Feet	Total Value (\$)	Five or More Family (# of Units)	Total Square Feet	Total Value (\$)	Mnftcd/ Mobile Homes	Total Square Feet	Total Value (\$)	Total Permits	Total Units
Bloomfield (Village)	-			-			-			-			-			0	0
Bristol	4	10,427	\$757,750	-			-			-			1	1,056	\$40,000	5	5
Canadice	5	11,608	\$1,200,000	-			-			-			4	5,370	\$188,586	9	9
Canandaigua (City)	18	31,426	\$285,000	-			-			-			-			18	18
Canandaigua	107	317,916	DNA	-			-			-			2	1,876	DNA	109	109
Clifton Springs (Village)	2	6,000	\$495,000	-			-			-			-			2	2
East Bloomfield	5	5,514	\$448,000	-			-			-			2	2,086	\$110,000	7	7
Farmington	65	DNA	\$11,869,120	-			-			-			2	DNA	\$39,000	67	67
Geneva (City)	-			-			-			1 (32)	17,350	\$3,600,000	-			1	32
Geneva	7	11,250	\$1,265,000	-			-			-			-			7	7
Gorham	23	DNA	\$8,000,000	-			-			-			-			23	23
Hopewell	4	8,512	\$740,000	-			-			-			4	4,546	\$140,000	8	8
Manchester	5	7,900	\$497,000	-			-			-			27	19,320	\$995,646	32	32
Manchester (Village)	1	2,500	\$245,000	-			-			-			4	4,600	\$198,000	5	5
Naples	4	11,289	\$1,750,678	-			-			-			2	2,560	\$84,678	6	6
Naples (Village)																	
Phelps	8	9,000	\$1,019,000	-			-			-			7	7,000	\$89,000	15	15
Phelps (Village)	-			-			-			-			1	1,300	\$102,000	1	1
Richmond	15	24,324	\$3,748,180	-			-			-			-			15	15
Rushville (Village)	1	1,248	\$80,000	-			-			-			-			1	1
Seneca	10	16,000	\$1,900,000	-			-			-			2	2,500	\$120,000	12	12
Shortsville (Village)	-			-			-			-			1	1,200	\$55,000	1	1
South Bristol	13	47,600	\$4,761,936	-			-			-			1	1,736	\$100,000	14	14
Victor	68	237,788	\$17,405,900	-			15(60)	95,100	\$6,600,000	3(144)	137,105	\$12,200,000	21	DNA	\$888,195	107	293
Victor (Village)	3	DNA	\$615,250	-			-			-			-			3	3
West Bloomfield	2	4,600	\$458,000	-			-			-			8	10,000	\$261,000	10	10
Totals	370			0			15(60)			4 (176)			89			478	695

DNA = Data not available.

Source: Municipal Representatives, 2007

Number, Square Footage, and Value of Permits Issued for New Residential Buildings (2007)

Orleans County

Municipality	Single Family	Total Square Feet	Total Value (\$)	Two Family	Total Square Feet	Total Value (\$)	Three or Four Family (# of Units)	Total Square Feet	Total Value (\$)	Five or More Family (# of Units)	Total Square Feet	Total Value (\$)	Mnfctd/ Mobile Homes	Total Square Feet	Total Value (\$)	Total Permits	Total Units
Albion	4	6,919	\$498,000	-			-			-			-			4	4
Albion (Village)	DNA																
Barre	DNA																
Carlton	6	120,000	\$800,000	-			-			-			2	3,500	\$160,000	8	8
Clarendon	3	6,200	DNA	-			-			-			6	9,000	DNA	9	9
Gaines	1	3,620	\$304,900	-			-			-			4	9,616	\$8,000	5	5
Holley (Village)	DNA																
Kendall	4	9,000	\$750,000	-			-			-			-			4	4
Lyndonville (Village)	-			-			-			-			-			0	0
Medina (Village)	-			-			-			2(25)	61,580	\$2,437,000	2	1,064	\$82,000	4	27
Murray	DNA																
Ridgeway	-			-			-			-			2	3,058	\$169,000	2	2
Shelby	2	4,495	\$250,000	-			1(2)	1,800	\$115,000	-			-			3	4
Yates	DNA																
Totals	20			0			1 (2)			2 (25)			16			39	63

DNA = Data not available.

Source: Municipal Representatives, 2007

Number, Square Footage, and Value of Permits Issued for New Residential Buildings (2007)

Seneca County

Municipality	Single Family	Total Square Feet	Total Value (\$)	Two Family	Total Square Feet	Total Value (\$)	Three or Four Family (# of Units)	Total Square Feet	Total Value (\$)	Five or More Family (# of Units)	Total Square Feet	Total Value (\$)	Mnfctd/ Mobile Homes	Total Square Feet	Total Value (\$)	Total Permits	Total Units
Covert	10		\$1,313,000	-			-			-			6		\$141,500	16	16
Fayette	6		\$788,000	-			-			-			11		\$662,000	17	17
Interlaken (Village)	included with Town of Covert																
Junius	6		\$419,000	-			-			-			2		\$2,000	8	8
Lodi	4		\$365,000	-			-			-			4		\$303,000	8	8
Lodi (Village)	included with Town of Lodi																
Ovid	6		\$729,000	-			-			-			2		\$69,000	8	8
Ovid (Village)	included with Town of Ovid																
Romulus	14		\$2,654,000	1 (2)		\$200,000	-			-			3		\$89,500	18	19
Seneca Falls	5		\$1,025,000	-			-			-			1		\$8,000	6	6
Seneca Falls (Village)	1		\$42,000	-			-			-			-			1	1
Tyre	-			-			-			-			3		\$78,000	3	3
Varick	6		\$778,000				-			-			2		\$45,000	8	8
Waterloo	3		\$255,000				-			-			18		\$393,000	21	21
Waterloo (Village)	1		\$2,000,000				-			-			1		\$80,000	2	2
Totals	62			1 (2)			0			0			53			116	117

DNA = Data not available.

Source: Seneca County Department of Economic Development & Planning, 2007

Number, Square Footage, and Value of Permits Issued for New Residential Buildings (2007)

Wayne County

Municipality	Single Family	Total Square Feet	Total Value (\$)	Two Family	Total Square Feet	Total Value (\$)	Three or Four Family (# of Units)	Total Square Feet	Total Value (\$)	Five or More Family (# of Units)	Total Square Feet	Total Value (\$)	Mnftcd/ Mobile Homes	Total Square Feet	Total Value (\$)	Total Permits	Total Units
Arcadia	DNA																
Butler	2	3,430	\$120,000	-			-			-			1	1,792	\$78,000	3	3
Clyde (Village)	1	2,250	\$210,000	-			-			-			-			1	1
Galen	7	15,500	\$840,000	-			-			-			-			7	7
Huron	8	17,659	\$1,740,000	-			-			-			1	840	\$5,000	9	9
Lyons	3	5,536	\$245,620	-			-			-			-			3	3
Lyons (Village)	1	2,000	\$200,000	-			-			-			-			1	1
Macedon	23	43,232	\$3,585,000	2 (4)	5,003	\$425,000	-			-			4		\$56,000	29	31
Macedon (Village)	2	4,312	DNA	-			-			-			-			2	2
Marion	DNA																
Newark (Village)	2	2,669	\$248,900	-			-			-			-			2	2
Ontario	47	103,741	\$8,034,779	-			-			-			4	5,101	\$129,500	51	51
Palmyra	1	3,200	\$250,000	-			-			-			3	5,000	\$255,000	4	4
Palmyra (Village)	-			-			-			-			-			0	0
Red Creek (Village)	2	3,584	\$167,000	-			-			-			-			2	2
Rose	-			-			-			-			3			3	3
Savannah	2	3,768	\$302,700	-			-			-			1	840	\$8,000	3	3
Sodus	8	14,601	\$1,127,000	-			-			-			-			8	8
Sodus (Village)	1	1,552	\$60,000	-			-			-			-			1	1
Sodus Point (Village)	1	2,940	\$275,000	-			-			-			-			1	1
Walworth	DNA																
Williamson	9	18,000	\$2,423,000	-			-			-			-			9	9
Wolcott	11	150,000	\$1,100,000	-			-			-			5	4,000	\$100,000	16	16
Wolcott (Village)	-			-			-			-			3	3,000	\$40,000	3	3
Totals	131			2 (4)			0			0			25			158	160

DNA = Data not available.

Source: Municipal Representatives, 2007

Number, Square Footage, and Value of Permits Issued for New Residential Buildings (2007)

Wyoming County

Municipality	Single Family	Total Square Feet	Total Value (\$)	Two Family	Total Square Feet	Total Value (\$)	Three or Four Family (# of Units)	Total Square Feet	Total Value (\$)	Five or More Family (# of Units)	Total Square Feet	Total Value (\$)	Mnftcd/ Mobile Homes	Total Square Feet	Total Value (\$)	Total Permits	Total Units
Arcade	6												7			13	13
Arcade (Village)	1												-			1	1
Attica	-												-			-	-
Attica (Village)	1												-			1	1
Bennington	10												-			10	10
Castile	3												-			3	3
Castile (Village)	-												-			-	-
Covington	1												4			5	5
Eagle	1												-			1	1
Gainesville	5												4			9	9
Gainesville (Village)	-												-			-	-
Genesee Falls	-												-			-	-
Java	6												-			6	6
Middlebury	-												1			1	1
Orangeville	3												1			4	4
Perry	4												-			4	4
Perry (Village)	1												-			1	1
Pike	2												-			2	2
Pike (Village)	-												-			-	-
Sheldon	5												-			5	5
Silver Springs (Village)	-												-			-	-
Warsaw	2												1			3	3
Warsaw (Village)	-												-			-	-
Wethersfield	4												1			5	5
Wyoming (Village)	-												-			-	-
Totals	55												19			74	74

Data Not Available

DNA = Data not available.

Source: Wyoming County Building Department, 2007

Number, Square Footage, and Value of Permits Issued for New Residential Buildings (2007)

Yates County

Municipality	Single Family	Total Square Feet	Total Value (\$)	Two Family	Total Square Feet	Total Value (\$)	Three or Four Family (# of Units)	Total Square Feet	Total Value (\$)	Five or More Family (# of Units)	Total Square Feet	Total Value (\$)	Mnfctd/ Mobile Homes	Total Square Feet	Total Value (\$)	Total Permits	Total Units
Barrington	13	DNA	DNA	-			-			-			15	DNA	DNA	28	28
Benton	DNA																
Dresden (Village)	-			-			-			-			-			0	0
Dundee (Village)	1	1,800	\$95,000	-			-			-			1	920	\$14,000	2	2
Italy	-			-			-			-			5	6,700	\$276,000	5	5
Jerusalem	DNA																
Middlesex	DNA																
Milo	18	47,710	\$5,174,000	-			-			-			4	4,414	\$78,800	22	22
Penn Yan (Village)	1	2,590	\$138,000	-			-			-			-			1	1
Potter	2	3,500	\$250,000	-			-			-			2	2,000	\$25,000	4	4
Starkey	3	7,500	\$655,000	-			-			-			5	6,000	\$93,000	8	8
Torrey	6	12,047	\$954,000	-			-			-			-			6	6
Totals	44			0			0			0			32			76	76

DNA = Data not available.

Source: Municipal Representatives, 2007

Appendix B

Number, Square Footage and Value of Permits Issued for New Industrial Buildings (2007)

Number, Square Footage, and Value of Permits Issued for New Industrial Buildings (2007)

Genesee County

Municipality	Permits	Total Square Feet	Total Value (\$)
Alabama	-		
Alexander	-		
Alexander (Village)	-		
Batavia (City)	-		
Batavia	-		
Bergen	1	DNA	DNA
Bergen (Village)	1	19,200	\$320,000
Bethany		DNA	
Byron		DNA	
Corfu (Village)	-		
Darien	-		
Elba	-		
Elba (Village)	-		
LeRoy	-		
LeRoy (Village)	-		
Oakfield	-		
Oakfield (Village)	-		
Pavilion		DNA	
Pembroke	-		
Stafford	2		

DNA = Data not available.

Source: Municipal representatives, 2007

Number, Square Footage, and Value of Permits Issued for New Industrial Buildings (2007)

Livingston County

Municipality	Permits	Total Square Feet	Total Value (\$)
Avon	-		
Avon (Village)	-		
Caledonia	-		
Caledonia (Village)	-		
Conesus	-		
Dansville (Village)	-		
Geneseo	-		
Geneseo (Village)	-		
Groveland	-		
Leicester	-		
Leicester (Village)	DNA		
Lima	-		
Lima (Village)	-		
Livonia	1	3,360	\$170,000
Livonia (Village)	-		
Mount Morris	-		
Mount Morris (Village)	-		
North Dansville	DNA		
Nunda	-		
Nunda (Village)	-		
Ossian	-		
Portage	DNA		
Sparta	-		
Springwater	-		
West Sparta	-		
York	1	3,744	\$36,500

DNA = Data not available.

Source: Municipal representatives, 2007

Number, Square Footage, and Value of Permits Issued for New Industrial Buildings (2007)

Monroe County

Municipality	Permits	Total Square Feet	Total Value (\$)
Brighton	-		
Brockport (Village)	-		
Chili	-		
Churchville (Village)	-		
Clarkson	-		
East Rochester (T/V)	DNA		
Fairport (Village)	-		
Gates	4	30,000	\$1,500,000
Greece	-		
Hamlin	-		
Henrietta	19	DNA	\$17,659,605
Hilton (Village)	-		
Honeoye Falls (Village)	-		
Irondequoit	-		
Mendon	-		
Ogden	-		
Parma	-		
Penfield	-		
Perinton	-		
Pittsford	-		
Pittsford (Village)	-		
Riga	-		
Rochester (City)	1	DNA	\$2,800,000
Rush	-		
Scottsville (Village)	-		
Spencerport (Village)	-		
Sweden	-		
Webster	1	32,900	\$1,785,000
Webster (Village)	-		
Wheatland	-		

DNA = Data not available.

Source: Municipal representatives, 2007

Number, Square Footage, and Value of Permits Issued for New Industrial Buildings (2007)

Ontario County

Municipality	Permits	Total Square Feet	Total Value (\$)
Bloomfield (Village)	-		
Bristol	1	20,153	\$1,200,000
Canadice	-		
Canandaigua (City)	-		
Canandaigua	-		
Clifton Springs (Village)	-		
East Bloomfield	-		
Farmington	-		
Geneva (City)	-		
Geneva	-		
Gorham	-		
Hopewell	-		
Manchester	-		
Manchester (Village)	1	70,000	\$280,000
Naples	-		
Naples (Village)		DNA	
Phelps	-		
Phelps (Village)	-		
Richmond	-		
Rushville (Village)	-		
Seneca	-		
Shortsville (Village)	-		
South Bristol	-		
Victor	5	239,087	\$12,550,000
Victor (Village)	-		
West Bloomfield	-		

DNA = Data not available.

Source: Municipal representatives, 2007

Number, Square Footage, and Value of Permits Issued for New Industrial Buildings (2007)

Orleans County

Municipality	Permits	Total Square Feet	Total Value (\$)
Albion	-		
Albion (Village)		DNA	
Barre		DNA	
Carlton	-		
Clarendon	-		
Gaines	-		
Holley (Village)		DNA	
Kendall	-		
Lyndonville (Village)	-		
Medina (Village)	-		
Murray		DNA	
Ridgeway	-		
Shelby	-		
Yates		DNA	

DNA = Data not available.

Source: Municipal representatives, 2007

Number, Square Footage, and Value of Permits Issued for New Industrial Buildings (2007)

Seneca County

Municipality	Permits	Total Square Feet	Total Value (\$)
Covert	-		
Fayette	-		
Interlaken (Village)	included with Town of Covert		
Junius	-		
Lodi	-		
Lodi (Village)	included with Town of Lodi		
Ovid	-		
Ovid (Village)	included with Town of Ovid		
Romulus	-		
Seneca Falls	-		
Seneca Falls (Village)	-		
Tyre	-		
Varick	-		
Waterloo	-		
Waterloo (Village)	-		

DNA = Data not available.

Source: Seneca County Department of Economic Development & Planning, 2007

Number, Square Footage, and Value of Permits Issued for New Industrial Buildings (2007)

Wayne County

Municipality	Permits	Total Square Feet	Total Value (\$)
Arcadia	DNA		
Butler	-		
Clyde (Village)	-		
Galen	1	8,600	\$200,000
Huron	-		
Lyons	-		
Lyons (Village)	-		
Macedon	1	DNA	\$380,000
Macedon (Village)	-		
Marion	DNA		
Newark (Village)	1	21,000	\$1,024,000
Ontario	-		
Palmyra	1	47,732	\$5,000,000
Palmyra (Village)	-		
Red Creek (Village)	-		
Rose	-		
Savannah	-		
Sodus	-		
Sodus (Village)	-		
Sodus Point (Village)	-		
Walworth	DNA		
Williamson	2	134000	\$9,000,000
Wolcott	-		
Wolcott (Village)	1	25,000	\$175,000

DNA = Data not available.

Source: Municipal representatives, 2007

Number, Square Footage, and Value of Permits Issued for New Industrial Buildings (2007)

Wyoming County

Municipality	Permits	Total Square Feet	Total Value (\$)
Arcade			
Arcade (Village)			
Attica			
Attica (Village)			
Bennington			
Castile			
Castile (Village)			
Covington			
Eagle			
Gainesville			
Gainesville (Village)			
Genesee Falls			
Java			
Middlebury			
Orangeville			
Perry			
Perry (Village)			
Pike			
Pike (Village)			
Sheldon			
Silver Springs (Village)			
Warsaw			
Warsaw (Village)			
Wethersfield			
Wyoming (Village)			

Data not available

DNA = Data not available.

Source: Wyoming County Building Department, 2007

Number, Square Footage, and Value of Permits Issued for New Industrial Buildings (2007)

Yates County

Municipality	Permits	Total Square Feet	Total Value (\$)
Barrington	-		
Benton	DNA		
Dresden (Village)	-		
Dundee (Village)	-		
Italy	-		
Jerusalem	DNA		
Middlesex	DNA		
Milo	-		
Penn Yan (Village)	-		
Potter	-		
Starkey	-		
Torrey	-		

DNA = Data not available.

Source: Municipal representatives, 2007

Appendix C

Number, Square Footage and Value of Permits Issued for New Commercial Buildings (2007)

Number, Square Footage, and Value of Permits Issued for New Commercial Buildings (2007)

Genesee County

Municipality	Offices/ Banks	Total Square Feet	Total Value (\$)	Retail/ Service	Total Square Feet	Total Value (\$)	Service Stations	Total Square Feet	Total Value (\$)	Hotels/ Motels	Total Square Feet	Total Value (\$)
Alabama	-			-			-			-		
Alexander	-			-			-			-		
Alexander (Village)	-			-			-			-		
Batavia (City)	-			-			-			-		
Batavia	-			5	211,351	\$3,874,000	-			-		
Bergen	-			-			-			-		
Bergen (Village)	-			-			-			-		
Bethany	DNA											
Byron	DNA											
Corfu (Village)	-			-			1	3,456	\$400,000	-		
Darien	-			-			-			-		
Elba	-			-			-			-		
Elba (Village)	-			-			-			-		
LeRoy	1	8,007	\$950,000	-			-			-		
LeRoy (Village)	-			-			-			-		
Oakfield	-			-			-			-		
Oakfield (Village)	-			-			-			-		
Pavilion	DNA											
Pembroke	-			-			-			-		
Stafford	-			-			-			-		

DNA = Data not available.

Source: Municipal representatives, 2007

Number, Square Footage, and Value of Permits Issued for New Commercial Buildings (2007)

Livingston County

Municipality	Offices/ Banks	Total Square Feet	Total Value (\$)	Retail/ Service	Total Square Feet	Total Value (\$)	Service Stations	Total Square Feet	Total Value (\$)	Hotels/ Motels	Total Square Feet	Total Value (\$)
Avon	-			-			-			-		
Avon (Village)	-			1	8,978	\$750,000	-			-		
Caledonia	-			1	400,000	\$350,000	-			-		
Caledonia (Village)	-			-			-			-		
Conesus	-			-			-			-		
Dansville (Village)	1	DNA	DNA	2	DNA	DNA	-			-		
Geneseo	-			1	5,297	\$450,000	-			-		
Geneseo (Village)	-			1	10,343	\$800,000	-			-		
Groveland	-			-			-			-		
Leicester	-			-			-			-		
Leicester (Village)	DNA											
Lima	-			1	4,800	\$15,000	-			-		
Lima (Village)	-			-			-			-		
Livonia	-			-			-			-		
Livonia (Village)	-			-			-			-		
Mount Morris	-			-			-			-		
Mount Morris (Village)	-			-			-			-		
North Dansville	DNA											
Nunda	-			-			-			-		
Nunda (Village)	-			-			-			-		
Ossian	-			-			-			-		
Portage	DNA											
Sparta	-			-			-			-		
Springwater	-			-			-			-		
West Sparta	-			-			-			-		
York	-			1	3,840	\$150,000	-			-		

DNA= Data not available.

Source: Municipal representatives, 2007

Number, Square Footage, and Value of Permits Issued for New Commercial Buildings (2007)

Monroe County

Municipality	Offices/ Banks	Total Square Feet	Total Value (\$)	Retail/ Service	Total Square Feet	Total Value (\$)	Service Stations	Total Square Feet	Total Value (\$)	Hotels/ Motels	Total Square Feet	Total Value (\$)
Brighton	1	34,514	\$3,500,000	-			-			-		
Brockport (Village)	-			-			-			-		
Chili	-			1	DNA	DNA	1	DNA	DNA	-		
Churchville (Village)	-			-			-			-		
Clarkson	-			-			-			-		
East Rochester (T/V)	DNA											
Fairport (Village)	-			-			-			-		
Gates	-			-			-			-		
Greece	6	-	\$3,222,000	-			-			-		
Hamlin	-			-			-			-		
Henrietta	-			-			-			-		
Hilton (Village)	-			1		\$274,000	-			-		
Honeoye Falls (Village)	-			2	3,500	\$500,000	-			-		
Irondequoit	-			-			-			1	DNA	DNA
Mendon	-			-			-			-		
Ogden	-			-			-			-		
Parma	-			1	5,000	\$150,000	-			-		
Penfield*	47 unspecified Commercial / Industrial permits totaling \$8,614,955											
Perinton	-			2	5,980	\$951,000	-			-		
Pittsford	-			1	10,384	\$5,100,000	-			-		
Pittsford (Village)	-			-			-			-		
Riga	-			-			-			-		
Rochester (City)	3	DNA	\$5,827,900	-			-			1	DNA	\$4,846,037
Rush	-			1	2,430	DNA	-			-		
Scottsville (Village)	-			-			-			-		
Spencerport (Village)	-			-			-			-		
Sweden	-			3	171,069	\$7,516,694	1	4,114	\$100,000	-		
Webster	-			2	16,960	\$2,350,000	-			1	54,620	\$2,800,000
Webster (Village)	-			-			-			-		
Wheatland	-			-			-			-		

DNA= Data not available.

*Penfield did not specify between Commercial and Industrial permits

Source: Municipal representatives, 2007

Number, Square Footage, and Value of Permits Issued for New Commercial Buildings (2007)

Ontario County

Municipality	Offices/ Banks	Total Square Feet	Total Value (\$)	Retail/ Service	Total Square Feet	Total Value (\$)	Service Stations	Total Square Feet	Total Value (\$)	Hotels/ Motels	Total Square Feet	Total Value (\$)
Bloomfield (Village)	-			-			-			-		
Bristol	-			-			-			-		
Canadice	-			-			-			-		
Canandaigua (City)	-			-			-			-		
Canandaigua	-			-			1	10,000	DNA	-		
Clifton Springs (Village)	-			-			-			-		
East Bloomfield	-			-			-			-		
Farmington	12 unspecified Commercial/ Industrial permits totaling \$1,236,000									1		\$3,600,000
Geneva (City)	-			-			-			-		
Geneva	-			-			-			-		
Gorham	-			-			-			-		
Hopewell	1	5,500	\$840,000	-			-			-		
Manchester	-			-			-			-		
Manchester (Village)	-			-			-			-		
Naples	-			-			-			-		
Naples (Village)	DNA											
Phelps	-			-			-			-		
Phelps (Village)	-			-			-			-		
Richmond	-			-			-			-		
Rushville (Village)	-			-			-			-		
Seneca	1	7,000	\$900,000	-			-			-		
Shortsville (Village)	-			-			-			-		
South Bristol	-			-			-			-		
Victor	-			2	12,342	\$1,475,000	-			1	44,272	\$3,500,000
Victor (Village)	1	23,735	\$5,500,000	-			-			-		
West Bloomfield	-			-			-			-		

DNA = Data not available.

Source: Municipal representatives, 2007

Number, Square Footage, and Value of Permits Issued for New Commercial Buildings (2007)

Orleans County

Municipality	Offices/ Banks	Total Square Feet	Total Value (\$)	Retail/ Service	Total Square Feet	Total Value (\$)	Service Stations	Total Square Feet	Total Value (\$)	Hotels/ Motels	Total Square Feet	Total Value (\$)
Albion	-			-			-			-		
Albion (Village)	DNA											
Barre	DNA											
Carlton	-			-			-			-		
Clarendon	-			-			-			-		
Gaines	-			-			-			-		
Holley (Village)	DNA											
Kendall	-			-			-			-		
Lyndonville (Village)	-			-			-			-		
Medina (Village)	-			-			-			-		
Murray	DNA											
Ridgeway	-			-			-			-		
Shelby	-			1	2,452	\$850,000	-			-		
Yates	DNA											

DNA = Data not available.

Source: Municipal representatives, 2007

Number, Square Footage, and Value of Permits Issued for New Commercial Buildings (2007)

Seneca County

Municipality	Offices/ Banks	Total Square Feet	Total Value (\$)	Retail/ Service	Total Square Feet	Total Value (\$)	Service Stations	Total Square Feet	Total Value (\$)	Hotels/ Motels	Total Square Feet	Total Value (\$)
Covert	-			-			-			-		
Fayette	-			3	DNA	\$450,000	-			-		
Interlaken (Village)	included with Town of Covert											
Junius	-			-			-			-		
Lodi	-			-			-			-		
Lodi (Village)	included with Town of Lodi											
Ovid	-			3	DNA	100,000+	-			-		
Ovid (Village)	included with Town of Ovid											
Romulus	-			1	DNA	\$85,000	-			-		
Seneca Falls	-			-			-			-		
Seneca Falls (Village)	-			-			-			-		
Tyre	-			-			-			-		
Varick	-			-			-			-		
Waterloo	1	DNA	DNA	1	DNA	DNA	-			-		
Waterloo (Village)	-			1	DNA	\$16,000	-			-		

DNA = Data not available.

Source: Seneca County Department of Economic Development & Planning, 2007

Number, Square Footage, and Value of Permits Issued for New Commercial Buildings (2007)

Wayne County

Municipality	Offices/ Banks	Total Square Feet	Total Value (\$)	Retail/ Service	Total Square Feet	Total Value (\$)	Service Stations	Total Square Feet	Total Value (\$)	Hotels/ Motels	Total Square Feet	Total Value (\$)
Arcadia	DNA											
Butler	1	2,592	\$136,000	1	3,312	\$500,000	-			-		
Clyde (Village)	-			-			-			-		
Galen	-			-			-			-		
Huron	-			-			-			-		
Lyons	-			-			-			-		
Lyons (Village)	-			1	15,000	\$40,000	-			-		
Macedon	1	DNA	\$1,300,000	1	DNA	\$5,900,000	-			-		
Macedon (Village)	-			-			-			-		
Marion	DNA											
Newark (Village)	-			-			-			-		
Ontario	-			1	17,000	\$375,000	-			-		
Palmyra	-			-			-			-		
Palmyra (Village)	-			-			-			-		
Red Creek (Village)	-			-			-			-		
Rose	-			-			-			-		
Savannah	-			-			-			-		
Sodus	-			-			-			1	2,100	\$200,000
Sodus (Village)	-			-			-			-		
Sodus Point (Village)	-			-			-			-		
Walworth	DNA											
Williamson	-			-			-			-		
Wolcott	-			-			-			-		
Wolcott (Village)	-			-			-			-		

DNA = Data not available.

Source: Municipal representatives, 2007

Number, Square Footage, and Value of Permits Issued for New Commercial Buildings (2007)

Wyoming County

Municipality	Offices/ Banks	Total Square Feet	Total Value (\$)	Retail/ Service	Total Square Feet	Total Value (\$)	Service Stations	Total Square Feet	Total Value (\$)	Hotels/ Motels	Total Square Feet	Total Value (\$)
Arcade			1							Unspecified Commerical Permit(s)		
Arcade (Village)			9							Unspecified Commerical Permit(s)		
Attica			1							Unspecified Commerical Permit(s)		
Attica (Village)			-							-		
Bennington			3							Unspecified Commerical Permit(s)		
Castile			1							Unspecified Commerical Permit(s)		
Castile (Village)			-							-		
Covington			1							Unspecified Commerical Permit(s)		
Eagle			5							Unspecified Commerical Permit(s)		
Gainesville			-							-		
Gainesville (Village)			1							Unspecified Commerical Permit(s)		
Genesee Falls			-							-		
Java			2							Unspecified Commerical Permit(s)		
Middlebury			1							Unspecified Commerical Permit(s)		
Orangeville			1							Unspecified Commerical Permit(s)		
Perry			7							Unspecified Commerical Permit(s)		
Perry (Village)			3							Unspecified Commerical Permit(s)		
Pike			6							Unspecified Commerical Permit(s)		
Pike (Village)			1							Unspecified Commerical Permit(s)		
Sheldon			7							Unspecified Commerical Permit(s)		
Silver Springs (Village)			2							Unspecified Commerical Permit(s)		
Warsaw			4							Unspecified Commerical Permit(s)		
Warsaw (Village)			3							Unspecified Commerical Permit(s)		
Wethersfield			3							Unspecified Commerical Permit(s)		
Wyoming (Village)			-							-		

DNA = Data not available.

Source: Wyoming County Building Department, 2007

Number, Square Footage, and Value of Permits Issued for New Commercial Buildings (2007)

Yates County

Municipality	Offices/ Banks	Total Square Feet	Total Value (\$)	Retail/ Service	Total Square Feet	Total Value (\$)	Service Stations	Total Square Feet	Total Value (\$)	Hotels/ Motels	Total Square Feet	Total Value (\$)
Barrington	-			1	3,000	\$275,000	-			-		
Benton	DNA											
Dresden (Village)	-			-			-			-		
Dundee (Village)	-			-			-			-		
Italy	-			-			-			-		
Jerusalem	DNA											
Middlesex	DNA											
Milo	-			-			-			-		
Penn Yan (Village)	1	11,200	\$365,000	1	11,681	\$1,700,000	-			-		
Potter	-			-			-			-		
Starkey	-			2	4,000	\$70,000	-			-		
Torrey	-			-			-			-		

DNA = Data not available.

Source: Municipal representatives, 2007

Appendix D

Number, Square Footage and Value of Permits Issued for New Community Service Buildings (2007)

Number, Square Footage, and Value of Permits Issued for New Community Service Buildings (2007)

Genesee County

Municipality	Hospitals/ Fire/ Ambulance/ Police	Total Square Feet	Total Value (\$)	Schools/ Churches	Total Square Feet	Total Value (\$)	Municipal/ Government	Total Square Feet	Total Value (\$)
Alabama	-			-			-		
Alexander	-			-			-		
Alexander (Village)	-			-			-		
Batavia (City)	-			-			-		
Batavia	-			-			-		
Bergen	-			-			-		
Bergen (Village)	-			-			-		
Bethany	DNA								
Byron	DNA								
Corfu (Village)	-			-			-		
Darien	-			-			-		
Elba	-			-			-		
Elba (Village)	-			-			-		
LeRoy	-			-			-		
LeRoy (Village)	-			-			-		
Oakfield	-			-			-		
Oakfield (Village)	-			-			-		
Pavilion	DNA								
Pembroke	-			-			-		
Stafford	-			-			-		

DNA= Data not available.

Source: Municipal representatives, 2007

Number, Square Footage, and Value of Permits Issued for New Community Service Buildings (2007)

Livingston County

Municipality	Hospitals/ Fire/ Ambulance/ Police	Total Square Feet	Total Value (\$)	Schools/ Churches	Total Square Feet	Total Value (\$)	Municipal/ Government/ Utilities	Total Square Feet	Total Value (\$)
Avon	-			-			-		
Avon (Village)	-			-			-		
Caledonia	-			-			-		
Caledonia (Village)	-			-			-		
Conesus	-			-			-		
Dansville (Village)	1 (out patient clinic)			1 (church)			2 (cell tower, power sub-station)		
Geneseo	-			-			-		
Geneseo (Village)	-			-			-		
Groveland	1 (Fire truck bays)		\$300,000	-			-		
Leicester	-			-			-		
Leicester (Village)	DNA								
Lima	-			-			-		
Lima (Village)	-			-			-		
Livonia	-			-			-		
Livonia (Village)	-			-			-		
Mount Morris	-			-			-		
Mount Morris (Village)	-			-			-		
North Dansville	DNA								
Nunda	-			-			-		
Nunda (Village)	-			-			-		
Ossian	-			-			-		
Portage	DNA								
Sparta	-			-			-		
Springwater	-			-			-		
West Sparta	-			-			-		
York	-			-			-		

DNA= Data not available.

Source: Municipal representatives, 2007

Number, Square Footage, and Value of Permits Issued for New Community Service Buildings (2007)

Monroe County

Municipality	Hospitals/ Fire/ Ambulance/ Police	Total Square Feet	Total Value (\$)	Schools/ Churches	Total Square Feet	Total Value (\$)	Municipal/ Government	Total Square Feet	Total Value (\$)
Brighton	-			-			-		
Brockport (Village)	-			-			-		
Chili	-			-			-		
Churchville (Village)	-			-			-		
Clarkson	-			-			-		
East Rochester (T/V)	DNA								
Fairport (Village)	-			-			-		
Gates	-			-			-		
Greece	-			-			2		\$5,300,000
Hamlin	-			-			-		
Henrietta	-			-			-		
Hilton (Village)	-			-			-		
Honeoye Falls (Village)	-			-			-		
Irondequoit	-			-			-		
Mendon	-			-			-		
Ogden	-			-			-		
Parma	-			-			-		
Penfield	-			-			-		
Perinton	-			-			4	82,360	\$8,325,000
Pittsford	-			-			-		
Pittsford (Village)	-			-			-		
Riga	-			-			-		
Rochester (City)	-			-			-		
Rush	-			-			-		
Scottsville (Village)	-			-			-		
Spencerport (Village)	-			-			-		
Sweden	-			-			-		
Webster	-			1	57,290	\$6,500,000	-		
Webster (Village)	1	20,000	\$2,000,000	-			-		
Wheatland	-			-			-		

DNA= Data not available.

Source: Municipal representatives, 2007

Number, Square Footage, and Value of Permits Issued for New Community Service Buildings (2007)

Ontario County

Municipality	Hospitals/ Fire/ Ambulance/ Police	Total Square Feet	Total Value (\$)	Schools/ Churches	Total Square Feet	Total Value (\$)	Municipal/ Government	Total Square Feet	Total Value (\$)
Bloomfield (Village)	-			-			-		
Bristol	-			-			-		
Canadice	-			-			-		
Canandaigua (City)	-			-			-		
Canandaigua	-			-			-		
Clifton Springs (Village)	-			-			-		
East Bloomfield	-			-			-		
Farmington	-			-			-		
Geneva (City)	-			-			-		
Geneva	-			-			-		
Gorham	-			-			-		
Hopewell	-			-			-		
Manchester	-			-			-		
Manchester (Village)	-			-			-		
Naples	-			-			-		
Naples (Village)	DNA								
Phelps	-			-			-		
Phelps (Village)	-			-			-		
Richmond	-			-			-		
Rushville (Village)	-			-			-		
Seneca	-			-			-		
Shortsville (Village)	-			-			-		
South Bristol	-			-			-		
Victor	-			-			-		
Victor (Village)	-			-			-		
West Bloomfield	-			-			-		

DNA= Data not available.

Source: Municipal representatives, 2007

Number, Square Footage, and Value of Permits Issued for New Community Service Buildings (2007)

Orleans County

Municipality	Hospitals/ Fire/ Ambulance/ Police	Total Square Feet	Total Value (\$)	Schools/ Churches	Total Square Feet	Total Value (\$)	Municipal/ Government	Total Square Feet	Total Value (\$)
Albion	-			-			-		
Albion (Village)	DNA								
Barre	DNA								
Carlton	-			-			-		
Clarendon	-			-			-		
Gaines	-			-			-		
Holley (Village)	DNA								
Kendall	-			-			-		
Lyndonville (Village)	-			-			-		
Medina (Village)	-			1	9,000	500,000	-		
Murray	DNA								
Ridgeway	-			-			-		
Shelby	-			-			-		
Yates	DNA								

DNA= Data not available.

Source: Municipal representatives, 2007

Number, Square Footage, and Value of Permits Issued for New Community Service Buildings (2007)

Seneca County

Municipality	Hospitals/ Fire/ Ambulance/ Police	Total Square Feet	Total Value (\$)	Schools/ Churches	Total Square Feet	Total Value (\$)	Municipal/ Government	Total Square Feet	Total Value (\$)
Covert	-			-			-		
Fayette	-			-			-		
Interlaken (Village)	included with Town of Covert								
Junius	-			-			-		
Lodi	-			1	DNA	\$15,000	-		
Lodi (Village)	included with Town of Lodi								
Ovid	-			1	DNA	DNA	-		
Ovid (Village)	included with Town of Ovid								
Romulus	-			-			-		
Seneca Falls	-			1	DNA	\$550,000	-		
Seneca Falls (Village)	-			-			-		
Tyre	-			-			-		
Varick	-			-			-		
Waterloo	1	DNA	DNA	-			-		
Waterloo (Village)	-			-			-		

DNA= Data not available.

Source: Seneca County Department of Economic Development & Planning, 2007

Number, Square Footage, and Value of Permits Issued for New Community Service Buildings (2007)

Wayne County

Municipality	Hospitals/ Fire/ Ambulance/ Police	Total Square Feet	Total Value (\$)	Schools/ Churches	Total Square Feet	Total Value (\$)	Municipal/ Government	Total Square Feet	Total Value (\$)
Arcadia	DNA								
Butler	-			-			-		
Clyde (Village)	-			-			-		
Galen	-			1	1,500	\$100,000	-		
Huron	-			-			-		
Lyons	-			-			-		
Lyons (Village)	-			-			-		
Macedon	-			-			-		
Macedon (Village)	-			-			-		
Marion	DNA								
Newark (Village)	-			-			-		
Ontario	-			-			-		
Palmyra	-			1	24,000	\$2,500,000	-		
Palmyra (Village)	-			-			-		
Red Creek (Village)	-			-			-		
Rose	-			-			-		
Savannah	-			1	3,024	\$223,000	-		
Sodus	-			-			-		
Sodus (Village)	-			-			-		
Sodus Point (Village)	-			-			-		
Walworth	DNA								
Williamson	-			-			-		
Wolcott	-			-			-		
Wolcott (Village)	-			-			-		

DNA= Data not available.

Source: Municipal representatives, 2007

Number, Square Footage, and Value of Permits Issued for New Community Service Buildings (2007)

Wyoming County

Municipality	Hospitals/ Fire/ Ambulance/ Police	Total Square Feet	Total Value (\$)	Schools/ Churches	Total Square Feet	Total Value (\$)	Municipal/ Government	Total Square Feet	Total Value (\$)
Arcade									
Arcade (Village)									
Attica									
Attica (Village)									
Bennington									
Castile									
Castile (Village)									
Covington									
Eagle									
Gainesville									
Gainesville (Village)									
Genesee Falls									
Java									
Middlebury									
Orangeville									
Perry									
Perry (Village)									
Pike									
Pike (Village)									
Sheldon									
Silver Springs (Village)									
Warsaw									
Warsaw (Village)									
Wethersfield									
Wyoming (Village)									

Data not available

DNA = Data not available.

Source: Wyoming County Building Department, 2007

Number, Square Footage, and Value of Permits Issued for New Community Service Buildings (2007)

Yates County

Municipality	Hospitals/ Fire/ Ambulance/ Police	Total Square Feet	Total Value (\$)	Schools/ Churches	Total Square Feet	Total Value (\$)	Municipal/ Government	Total Square Feet	Total Value (\$)
Barrington	-			-			-		
Benton	DNA								
Dresden (Village)	-			-			-		
Dundee (Village)	-			-			-		
Italy	-			-			-		
Jerusalem	DNA								
Middlesex	DNA								
Milo	-			-			-		
Penn Yan (Village)	-								
Potter	-			-			-		
Starkey	-			-			-		
Torrey	-			-			-		

DNA = Data not available.

Source: Municipal representatives, 2007

Appendix E

Number, Square Footage and Value of Permits Issued for New Buildings Not Elsewhere Classified (2007)

Number, Description, Square Footage, and Value of Permitted New Buildings Not Elsewhere Classified (2007)

Genesee County

Municipality	Permits	Description(s)	Total Square Feet	Total Value (\$)
Alabama	-			
Alexander	-			
Alexander (Village)	-			
Batavia (City)	-			
Batavia	-			
Bergen	-			
Bergen (Village)	-			
Bethany		DNA		
Byron		DNA		
Corfu (Village)	-			
Darien	-			
Elba	-			
Elba (Village)	-			
LeRoy	-			
LeRoy (Village)	-			
Oakfield	-			
Oakfield (Village)	-			
Pavilion		DNA		
Pembroke	-			
Stafford	-			

DNA= Data not available.

Source: Municipal representatives, 2007

Number, Description, Square Footage, and Value of Permitted New Buildings Not Elsewhere Classified (2007)

Livingston County

Municipality	Permits	Description(s)	Total Square Feet	Total Value (\$)
Avon	-			
Avon (Village)	-			
Caledonia	-			
Caledonia (Village)	-			
Conesus	-			
Dansville (Village)	1	ARC home	DNA	DNA
Geneseo	-			
Geneseo (Village)	-			
Groveland	-			
Leicester	3	Agricultural	19,232	\$82,300
Leicester (Village)		DNA		
Lima	-			
Lima (Village)	-			
Livonia	-			
Livonia (Village)	-			
Mount Morris	-			
Mount Morris (Village)	-			
North Dansville		DNA		
Nunda	-			
Nunda (Village)	-			
Ossian	-			
Portage		DNA		
Sparta	-			
Springwater	-			
West Sparta	-			
York	4	Agricultural		\$1,204,000

DNA= Data not available.

Source: Municipal representatives, 2007

Number, Description, Square Footage, and Value of Permitted New Buildings Not Elsewhere Classified (2007)

Monroe County

Municipality	Permits	Description(s)	Total Square Feet	Total Value (\$)
Brighton	-			
Brockport (Village)	-			
Chili	6	Cell Tower Co-locations	DNA	DNA
Churchville (Village)	-			
Clarkson	-			
East Rochester (T/V)		DNA		
Fairport (Village)	-			
Gates	-			
Greece	-			
Hamlin	-			
Henrietta	-			
Hilton (Village)	-			
Honeoye Falls (Village)	-			
Irondequoit	-			
Mendon	-			
Ogden	-			
Parma	-			
Penfield	-			
Perinton	-			
Pittsford	-			
Pittsford (Village)	-			
Riga	-			
Rochester (City)	1	Chilled water plant	DNA	\$2,770,375
Rush	-			
Scottsville (Village)	-			
Spencerport (Village)	-			
Sweden	-			
Webster	-			
Webster (Village)	-			
Wheatland	-			

DNA= Data not available.

Source: Municipal representatives, 2007

Number, Description, Square Footage, and Value of Permitted New Buildings Not Elsewhere Classified (2007)

Ontario County

Municipality	Permits	Description(s)	Total Square Feet	Total Value (\$)
Bloomfield (Village)	-			
Bristol	-			
Canadice	-			
Canandaigua (City)	-			
Canandaigua	-			
Clifton Springs (Village)	-			
East Bloomfield	-			
Farmington	-			
Geneva (City)	2	College Dormitories	24,260	\$3,181,256
Geneva	-			
Gorham	-			
Hopewell	1	Storage	8,400	\$546,000
Manchester	-			
Manchester (Village)	-			
Naples	1	Assembly Space (Ski Lodge)	4,127	\$623,000
Naples (Village)		DNA		
Phelps	-			
Phelps (Village)	-			
Richmond	-			
Rushville (Village)	-			
Seneca	-			
Shortsville (Village)	-			
South Bristol	-			
Victor	-			
Victor (Village)	-			
West Bloomfield	-			

DNA= Data not available.

Source: Municipal representatives, 2007

Number, Description, Square Footage, and Value of Permitted New Buildings Not Elsewhere Classified (2007)

Orleans County

Municipality	Permits	Description(s)	Total Square Feet	Total Value (\$)
Albion	-			
Albion (Village)		DNA		
Barre		DNA		
Carlton	-			
Clarendon	-			
Gaines	-			
Holley (Village)		DNA		
Kendall	-			
Lyndonville (Village)	-			
Medina (Village)	-			
Murray		DNA		
Ridgeway	-			
Shelby	-			
Yates		DNA		

DNA= Data not available.

Source: Municipal representatives, 2007

Number, Description, Square Footage, and Value of Permitted New Buildings Not Elsewhere Classified (2007)

Seneca County

Municipality	Permits	Description(s)	Total Square Feet	Total Value (\$)
Covert	-			
Fayette	-			
Interlaken (Village)		included with Town of Covert		
Junius	-			
Lodi	-			
Lodi (Village)		included with Town of Lodi		
Ovid	-			
Ovid (Village)		included with Town of Ovid		
Romulus	-			
Seneca Falls	2	pre-fab buildings		\$168,978
Seneca Falls (Village)	-			
Tyre	-			
Varick	-			
Waterloo	1	announcer stand/ barn		DNA
Waterloo (Village)	-			

DNA= Data not available.

Source: Seneca County Department of Economic Development & Planning, 2007

Number, Description, Square Footage, and Value of Permitted New Buildings Not Elsewhere Classified (2007)

Wayne County

Municipality	Permits	Description(s)	Total Square Feet	Total Value (\$)
Arcadia		DNA		
Butler	-			
Clyde (Village)	-			
Galen	-			
Huron	-			
Lyons	-			
Lyons (Village)	1	Asphalt Tank	50,000	\$2,000,000
Macedon	3	Self Storage, Cell tower	DNA	\$535,000
Macedon (Village)	-			
Marion		DNA		
Newark (Village)	-			
Ontario	1	Training Center- Ginna Plant	12,250	\$800,000
Palmyra	-			
Palmyra (Village)	-			
Red Creek (Village)	-			
Rose	-			
Savannah	-			
Sodus	-			
Sodus (Village)	-			
Sodus Point (Village)	-			
Walworth		DNA		
Williamson	-			
Wolcott	-			
Wolcott (Village)	-			

DNA= Data not available.

Source: Municipal representatives, 2007

Number, Description, Square Footage, and Value of Permitted New Buildings Not Elsewhere Classified (2007)

Wyoming County

Municipality	Permits	Description(s)	Total Square Feet	Total Value (\$)
Arcade				
Arcade (Village)				
Attica				
Attica (Village)				
Bennington				
Castile				
Castile (Village)				
Covington				
Eagle				
Gainesville				
Gainesville (Village)				
Genesee Falls				
Java		Data Not Available		
Middlebury				
Orangeville				
Perry				
Perry (Village)				
Pike				
Pike (Village)				
Sheldon				
Silver Springs (Village)				
Warsaw				
Warsaw (Village)				
Wethersfield				
Wyoming (Village)				

DNA= Data not available.

Source: Wyoming County Building Department, 2007

Number, Description, Square Footage, and Value of Permitted New Buildings Not Elsewhere Classified (2007)

Yates County

Municipality	Permits	Description(s)	Total Square Feet	Total Value (\$)
Barrington	-			
Benton		DNA		
Dresden (Village)	-			
Dundee (Village)	-			
Italy	-			
Jerusalem		DNA		
Middlesex		DNA		
Milo	-			
Penn Yan (Village)	-			
Potter	-			
Starkey	-			
Torrey	-			

DNA= Data not available.

Source: Municipal representatives, 2007

Appendix F

Number and Type of Buildings Demolished (2007)

Number and Type of Buildings Demolished (2007)

Genesee County

Municipality	Permit / track Demo.	Residential Permits issued (# of units)	Industrial (approx. sq. feet)	Commercial (approx. sq. feet)	Other (approx. sq. feet)
Alabama	yes	-	-	-	-
Alexander	yes	-	-	-	-
Alexander (Village)	yes	-	-	-	-
Batavia (City)	yes	4(7)	-	1 (4200sf)	1 (616)
Batavia	yes	-	-	1	2
Bergen	no	-	-	-	-
Bergen (Village)	yes	-	-	-	-
Bethany	no	DNA			
Byron	no	DNA			
Corfu (Village)	yes				
Darien	no	-	-	-	-
Elba	yes	-	-	-	-
Elba (Village)	yes	-	-	-	1
LeRoy	yes	-	-	-	-
LeRoy (Village)	yes	-	-	-	1 (120)
Oakfield	yes	-	-	-	-
Oakfield (Village)	yes	-	-	-	-
Pavilion	yes	DNA			
Pembroke	yes	-	-	-	-
Stafford	no	-	-	-	-

DNA = Data not available.

Source: Municipal representatives, 2007

Number and Type of Buildings Demolished (2007)

Livingston County

Municipality	Permit / track Demo.	Residential Permits issued (# of units)	Industrial (approx. sq. feet)	Commercial (approx. sq. feet)	Other (total approx. sq. feet)
Avon	yes	-	-	-	-
Avon (Village)	yes	-	-	-	-
Caledonia	yes	-	-	-	1
Caledonia (Village)	yes	-	-	-	-
Conesus	yes	4	-	-	3(3260)
Dansville (Village)	yes	2	-	2	-
Geneseo	yes	-	-	-	-
Geneseo (Village)	yes	-	-	-	-
Groveland	yes	1	-	-	-
Leicester	no	-	-	-	-
Leicester (Village)	DNA				
Lima	yes	-	-	-	-
Lima (Village)	yes	-	-	-	-
Livonia	yes	2	-	-	2 (1100)
Livonia (Village)	yes	-	-	-	1 (1250)
Mount Morris	yes	-	-	-	-
Mount Morris (Village)	yes	-	-	1	-
North Dansville	yes				
Nunda	yes	1	-	-	-
Nunda (Village)	yes	1	-	-	-
Ossian	yes	1	-	-	-
Portage	yes				
Sparta	yes	-	-	-	-
Springwater	yes	3	-	-	1 (980)
West Sparta	yes	-	-	-	2 (980)
York	no	-	-	-	-

DNA= Data not available.

Source: Municipal representatives, 2007

Number and Type of Buildings Demolished (2007)

Monroe County

Municipality	Permit / track Demo.	Residential Permits issued (# of units)	Industrial (approx. sq. feet)	Commercial (approx. sq. feet)	Other (approx. sq. feet)
Brighton	yes	2	-	-	1 (576)
Brockport (Village)	yes	-	-	1 (660)	-
Chili	yes	19 unspecified demolitions			
Churchville (Village)	yes	1	-	4 (97,000)	-
Clarkson	yes	-	-	-	-
East Rochester (T/V)	yes				
Fairport (Village)	yes	1 (3)	-	-	-
Gates	yes	-	-	1	-
Greece	yes	16	303,751 sqft	32,410 sqft	18,000 sqft
Hamlin	yes	2	-	-	-
Henrietta	yes	13 unspecified demolitions			
Hilton (Village)	yes	-	-	-	-
Honeoye Falls (Village)	yes	-	-	-	-
Irondequoit	yes	5	-	-	8
Mendon	yes	1	-	-	4
Ogden	no	-	-	-	-
Parma	yes	9	-	17,000 sqft	-
Penfield	yes	DNA			
Perinton	yes	1	13,500 sqft	-	-
Pittsford	yes	3	-	948 sqft	400 sqft
Pittsford (Village)	yes	-	-	-	-
Riga	yes	1	-	-	-
Rochester (City)	yes	188 (304)	14	25	53
Rush	yes	2	-	-	-
Scottsville (Village)	yes	-	-	1 (4500)	3 (500)
Spencerport (Village)	yes	-	-	-	1 (2824)
Sweden	yes	-	1 (1800)	-	-
Webster	yes	12	-	1	19
Webster (Village)	yes	2	-	1 (15,000)	-
Wheatland	yes	-	-	-	1 (5508)

DNA= Data not available.

Source: Municipal representatives, 2007

Number and Type of Buildings Demolished (2007)

Ontario County

Municipality	Permit / track Demo.	Residential Permits issued (# of units)	Industrial (approx. sq. feet)	Commercial (approx. sq. feet)	Other (approx. sq. feet)
Bloomfield (Village)	no	-	-	-	-
Bristol	yes	2	-	-	-
Canadice	yes	9	-	-	-
Canandaigua (City)	yes	1	-	1	5
Canandaigua	yes	11	-	-	1
Clifton Springs (Village)	yes	6	-	-	-
East Bloomfield	yes	2 (2)	-	-	-
Farmington	yes	1	-	-	-
Geneva (City)	yes	3	-	-	-
Geneva	-	-	-	-	-
Gorham	yes	3	-	-	5
Hopewell	no	-	-	-	-
Manchester	yes	7	-	-	-
Manchester (Village)	yes	2	-	-	-
Naples	yes	1	-	-	-
Naples (Village)	yes				
Phelps	yes	3	-	-	4,000
Phelps (Village)	yes	-	-	-	-
Richmond	yes	3	-	-	-
Rushville (Village)	yes	-	-	-	-
Seneca	yes	2	-	-	3
Shortsville (Village)	yes	1	-	-	-
South Bristol	yes	9	-	-	-
Victor	yes	3	-	-	-
Victor (Village)	yes	-	-	4 (15,000)	-
West Bloomfield	yes	-	-	-	1 (1200)

DNA = Data not available.

Source: Municipal representatives, 2007

Number and Type of Buildings Demolished (2007)

Orleans County

Municipality	Permit / track Demo.	Residential Permits issued (# of units)	Industrial (approx. sq. feet)	Commercial (approx. sq. feet)	Other (approx. sq. feet)
Albion	yes	-	-	-	1 Barn (2000)
Albion (Village)	yes	DNA			
Barre	yes	DNA			
Carlton	no	-	-	-	-
Clarendon	yes	2	-	-	3
Gaines	yes	-	-	-	-
Holley (Village)	DNA				
Kendall	yes	-	-	-	-
Lyndonville (Village)	yes	-	-	-	-
Medina (Village)	yes	1	-	-	2 (400)
Murray	DNA				
Ridgeway	yes	2	-	-	-
Shelby	yes	1	-	1 (6000)	3 (garages)
Yates	yes				

DNA = Data not available.

Source: Municipal representatives, 2007

Number and Type of Buildings Demolished (2007)

Seneca County

Municipality	Permit / track Demo.	Residential Permits issued (# of units)	Industrial (approx. sq. feet)	Commercial (approx. sq. feet)	Other (approx. sq. feet)
Covert	yes	2	-	-	-
Fayette	yes	1	-	-	-
Interlaken (Village)	yes	included with Town of Covert			
Junius	yes	-	-	-	-
Lodi	yes	1	-	-	-
Lodi (Village)	yes	included with Town of Lodi			
Ovid	yes	-	-	1	-
Ovid (Village)	yes	included with Town of Ovid			
Romulus	yes	3	-	1	-
Seneca Falls	yes	1	-	1	-
Seneca Falls (Village)	yes	1	-	-	-
Tyre	yes	-	-	-	-
Varick	yes	-	-	8	-
Waterloo	yes	6	-	-	-
Waterloo (Village)	yes	1	-	1	1

DNA = Data not available.

Source: Seneca County Department of Economic Development & Planning, 2007

Number and Type of Buildings Demolished (2007)

Wayne County

Municipality	Permit / track Demo.	Residential Permits issued (# of units)	Industrial (approx. sq. feet)	Commercial (approx. sq. feet)	Other (approx. sq. feet)
Arcadia	yes	DNA			
Butler	yes	4 (5,000)	-	1 (3,000)	-
Clyde (Village)	yes	6	-	-	1 (oil tank)
Galen	yes	2	-	1 (1,500)	6
Huron	yes	2	-	-	-
Lyons	yes	1	-	-	5
Lyons (Village)	yes	1	1	1	-
Macedon	yes	3	-	-	-
Macedon (Village)	yes	-	-	-	-
Marion	DNA				
Newark (Village)	yes	-	-	-	-
Ontario	yes	3	-	3 (18,549)	30 (mobile homes)
Palmyra	yes	4	-	-	-
Palmyra (Village)	yes	-	-	-	-
Red Creek (Village)	yes	2	-	-	-
Rose	yes	-	-	-	-
Savannah	yes	8	-	-	-
Sodus	yes	1	-	-	-
Sodus (Village)	yes	-	-	-	-
Sodus Point (Village)	yes	1	-	-	-
Walworth	DNA				
Williamson	yes	2	2	-	-
Wolcott	yes	-	-	-	-
Wolcott (Village)	yes	3	-	-	-

DNA = Data not available.

Source: Municipal representatives, 2007

Number and Type of Buildings Demolished (2007)

Wyoming County

Municipality	Permit / track Demo.	Residential Permits issued (# of units)	Industrial (approx. sq. feet)	Commercial (approx. sq. feet)	Other (approx. sq. feet)
Arcade	yes			2	
Arcade (Village)	yes			1	
Attica	yes			1	
Attica (Village)	yes			2	
Bennington	yes			2	
Castile	yes			2	
Castile (Village)	yes			1	
Covington	yes			-	
Eagle	yes			1	
Gainesville	yes			-	
Gainesville (Village)	yes			-	
Genesee Falls	yes			-	
Java	yes			1	
Middlebury	yes			-	
Orangeville	yes			1	
Perry	yes			2	
Perry (Village)	yes			1	
Pike	yes			-	
Pike (Village)	yes			1	
Sheldon	yes			1	
Silver Springs (Village)	yes			-	
Warsaw	yes			-	
Warsaw (Village)	yes			-	
Wethersfield	yes			-	
Wyoming (Village)	yes			-	

DNA = Data not available.

Source: Wyoming County Building Department, 2007

Number and Type of Buildings Demolished (2007)

Yates County

Municipality	Permit / track Demo.	Residential Permits issued (# of units)	Industrial (approx. sq. feet)	Commercial (approx. sq. feet)	Other (approx. sq. feet)
Barrington	yes	3	-	1	-
Benton	DNA				
Dresden (Village)	yes	-	-	-	-
Dundee (Village)	yes	-	-	-	-
Italy	yes	-	-	-	1 (400)
Jerusalem	DNA				
Middlesex	DNA				
Milo	yes	5 unspecified demolitions			
Penn Yan (Village)	yes	1	-	-	-
Potter	yes	-	-	-	-
Starkey	yes	2	-	-	-
Torrey	yes	3	-	-	-

DNA = Data not available.

Source: Municipal representatives, 2007

Appendix G

**Number of Permitted Units for Residential, Industrial, Commercial and
Community Service Buildings (2005 - 2007)**

Number of Permits Issued for New Residential Units and Industrial, Commercial and Community Service Buildings (2005 - 2007)

Genesee County

Municipality	Residential Units			Industrial Units			Commercial Units			Community Service Units		
	2005	2006	2007	2005	2006	2007	2005	2006	2007	2005	2006	2007
Alabama	4	6	8	-	-	-	-	-	-	-	-	-
Alexander	4	DNA	4	-	DNA	-	-	DNA	-	-	DNA	-
Alexander (Village)	1	-	-	-	-	-	-	-	-	-	-	-
Batavia (City)	2	4	50	-	1	-	1	2	-	-	-	-
Batavia	12	DNA	35	5	DNA	-	-	DNA	5	-	DNA	-
Bergen	4	4	6	1	2	1	1	-	-	-	-	-
Bergen (Village)	-	-	-	-	-	1	-	-	-	-	-	-
Bethany	1	1	DNA	-	-	DNA	-	1	DNA	-	-	DNA
Byron	5	8	DNA	-	-	DNA	1	-	DNA	-	-	DNA
Corfu (Village)	2	-	1	-	-	-	-	-	-	-	-	-
Darien	13	7	8	-	-	-	-	-	-	-	-	-
Elba	4	1	-	-	-	-	-	-	-	-	-	-
Elba (Village)	1	-	1	-	-	-	1	-	-	-	-	-
LeRoy	12	10	11	-	-	-	1	-	1	-	-	-
LeRoy (Village)	2	2	-	-	-	-	-	1	-	-	-	-
Oakfield	5	1	3	-	-	-	-	-	-	-	-	-
Oakfield (Village)	-	DNA	-	-	DNA	-	-	DNA	-	-	DNA	-
Pavilion	5	DNA	DNA	-	-	DNA	-	-	DNA	-	-	DNA
Pembroke	8	9	4	-	-	-	2	-	1	-	-	-
Stafford	9	5	5	-	-	2	2	-	-	-	-	-
County Totals	94	58	74	6	3	4	9	4	7	0	0	0

DNA = Data not available.

Source: Municipal representatives, 2005 - 2007

Number of Permits Issued for New Residential Units and Industrial, Commercial and Community Service Buildings (2005 - 2007)

Livingston County

Municipality	Residential Units			Industrial Units			Commercial Units			Community Service Units		
	2005	2006	2007	2005	2006	2007	2005	2006	2007	2005	2006	2007
Avon	22	28	2	-	-	-	3	-	-	-	-	-
Avon (Village)	12	9	6	-	1	-	-	-	1	-	-	-
Caledonia	5	4	5	-	1	-	1	-	-	-	-	-
Caledonia (Village)	-	-	-	-	-	-	-	-	-	-	-	-
Conesus	DNA	8	8	DNA	-	-	DNA	-	-	DNA	-	-
Dansville (Village)	2	2	4	-	-	-	-	3	3	-	1	4
Geneseo	DNA	13	4	DNA	-	-	DNA	-	1	DNA	-	-
Geneseo (Village)	DNA	8	1	DNA	-	-	DNA	-	1	DNA	-	-
Groveland	6	5	3	-	-	-	-	-	-	-	1	1
Leicester	3	5	5	-	-	-	-	-	-	-	-	-
Leicester (Village)	DNA	DNA	DNA	DNA	DNA	DNA	DNA	DNA	DNA	DNA	DNA	DNA
Lima	9	9	5	-	1	-	2	-	-	-	-	-
Lima (Village)	1	2	3	-	-	-	-	-	-	-	-	-
Livonia	65	26	27	-	-	1	3	2	-	2	-	-
Livonia (Village)	1	DNA	3	-	DNA	-	-	DNA	-	-	DNA	-
Mount Morris	DNA	1	3	DNA	-	-	DNA	-	-	DNA	-	-
Mount Morris (Village)	4	1	1	-	-	-	-	-	-	-	-	-
North Dansville	4	1	DNA	2	-	DNA	2	1	DNA	-	-	DNA
Nunda	4	7	6	-	-	-	-	-	-	-	-	-
Nunda (Village)	-	-	25	-	-	-	-	-	-	-	-	-
Ossian	DNA	7	2	DNA	-	-	DNA	-	-	DNA	-	-
Portage	DNA	8	DNA	DNA	-	DNA	DNA	-	DNA	DNA	-	DNA
Sparta	DNA	DNA	-	DNA	DNA	-	DNA	DNA	-	DNA	DNA	-
Springwater	DNA	DNA	11	DNA	DNA	-	DNA	DNA	-	DNA	DNA	-
West Sparta	DNA	3	4	DNA	-	-	DNA	-	-	DNA	-	-
York	10	7	8	2	2	1	-	-	1	-	-	-
County Totals	148	154	136	4	5	2	11	6	7	2	2	5

DNA= Data not available.

Source: Municipal representatives, 2005 - 2007

Number of Permits Issued for New Residential Units and Industrial, Commercial and Community Service Buildings (2005 - 2007)

Monroe County

Municipality	Residential Units			Industrial Units			Commercial Units			Community Service Units		
	2005	2006	2007	2005	2006	2007	2005	2006	2007	2005	2006	2007
Brighton	206	95	11	-	-	-	-	3	1	-	-	-
Brockport (Village)	4	6	10	-	1	-	1	-	-	-	-	-
Chili	102	108	80	-	DNA*	-	6	22	2	2	DNA*	-
Churchville (Village)	5	38	7	-	-	-	1	-	-	-	-	-
Clarkson	18	18	16	1	-	-	-	1	-	-	-	-
East Rochester (T/V)	2	9	DNA	-	-	DNA	1	-	DNA	-	-	DNA
Fairport (Village)	1	-	1	-	1	-	-	-	-	-	-	-
Gates	23	19	8	1	1	4	-	2	-	-	-	-
Greece	220	184	126	-	-	-	11	12	6	1	2	-
Hamlin	9	15	28	-	-	-	2	-	-	1	-	-
Henrietta	206	176	263	20	22	19	-	1	-	-	-	-
Hilton (Village)	13	86	16	-	-	-	-	1	1	-	-	-
Honeoye Falls (Village)	10	10	15	-	-	-	-	-	2	-	-	-
Irondequoit	16	9	10	-	-	-	2	2	1	-	-	-
Mendon	25	22	16	-	-	-	-	-	-	-	-	-
Ogden	62	60	38	-	-	-	-	-	-	-	-	-
Parma	62	44	32	2	-	-	2	-	1	2	-	-
Penfield	140	110	128	DNA*	DNA*	-	21	30	47*	-	DNA*	-
Perinton	64	52	49	-	-	-	2	3	2	1	-	-
Pittsford	95	57	49	-	-	-	-	-	1	2	1	-
Pittsford (Village)	-	-	-	-	-	-	-	-	-	-	-	-
Riga	13	7	5	1	2	-	-	-	-	-	-	-
Rochester (City)	93	77	84	1	-	1	-	1	4	3	-	-
Rush	11	6	3	-	-	-	-	-	1	-	-	-
Scottsville (Village)	3	2	2	-	-	-	-	-	-	-	-	-
Spencerport (Village)	1	1	5	-	-	-	-	-	-	-	-	-
Sweden	7	7	5	-	-	-	-	3	4	-	-	-
Webster	233	187	141	-	-	1	3	6	3	-	-	1
Webster (Village)	-	20	9	1	-	-	-	-	-	-	-	-
Wheatland	12	4	3	-	-	-	-	-	-	-	-	-
County Totals	1,656	1,429	1,160	27	27	25	52	87	76	12	3	1

*The towns of Chili and Penfield did not specify between Commercial and Industrial permits.

DNA= Data not available.

Source: Municipal representatives, 2005 - 2007

Number of Permits Issued for New Residential Units and Industrial, Commercial and Community Service Buildings (2005 - 2007)

Ontario County

Municipality	Residential Units			Industrial Units			Commercial Units			Community Service Units		
	2005	2006	2007	2005	2006	2007	2005	2006	2007	2005	2006	2007
Bloomfield (Village)	1	-	-	-	-	-	-	-	-	-	-	-
Bristol	9	10	5	-	-	1	-	-	-	-	-	-
Canadice	7	8	9	-	-	-	-	-	-	-	-	-
Canandaigua (City)	33	7	18	-	-	-	-	1	-	-	-	-
Canandaigua	96	170	109	-	-	-	3	-	1	-	-	-
Clifton Springs (Village)	3	-	2	-	-	-	-	-	-	-	-	-
East Bloomfield	14	10	7	2	1	-	-	-	-	-	-	-
Farmington	43	113	67	-	-	-	-	-	13*	-	-	-
Geneva (City)	-	1	32	-	-	-	-	1	-	-	-	-
Geneva	6	10	7	-	-	-	2	1	-	1	-	-
Gorham	43	30	23	-	-	-	-	-	-	-	-	-
Hopewell	25	13	8	-	-	-	3	2	1	-	-	-
Manchester	29	23	32	-	-	-	-	-	-	-	-	-
Manchester (Village)	5	2	5	-	-	1	-	-	-	-	-	-
Naples	10	7	6	-	-	-	-	-	-	-	-	-
Naples (Village)	1	1	DNA	-	-	DNA	-	1	DNA	-	-	DNA
Phelps	14	11	15	2	2	-	-	-	-	-	-	-
Phelps (Village)	4	-	1	-	-	-	-	-	-	2	-	-
Richmond	8	19	15	-	-	-	-	-	-	-	-	-
Rushville (Village)	-	-	1	-	-	-	-	-	-	-	-	-
Seneca	6	7	12	1	-	-	2	-	1	-	-	-
Shortsville (Village)	25	1	1	-	-	-	-	-	-	-	-	-
South Bristol	16	14	14	-	-	-	-	-	-	-	-	-
Victor	118	78	293	6	1	5	4	4	3	-	-	-
Victor (Village)	9	8	3	3	-	-	-	-	1	-	-	-
West Bloomfield	16	3	10	-	-	-	-	-	-	-	-	-
County Totals	541	546	695	14	4	7	14	10	20	3	0	0

*The town of Farmington did not specify between Commercial and Industrial permits.

DNA = Data not available.

Source: Municipal representatives, 2005 - 2007

Number of Permits Issued for New Residential Units and Industrial, Commercial and Community Service Buildings (2005 - 2007)

Orleans County

Municipality	Residential Units			Industrial Units			Commercial Units			Community Service Units		
	2005	2006	2007	2005	2006	2007	2005	2006	2007	2005	2006	2007
Albion	5	1	4	1	-	-	1	-	-	-	-	-
Albion (Village)	8	3	DNA	-	-	DNA	1	-	DNA	-	1	DNA
Barre	DNA	3	DNA	DNA	-	DNA	DNA	-	DNA	DNA	-	DNA
Carlton	15	11	8	-	-	-	-	-	-	-	-	-
Clarendon	5	DNA	9	-	DNA	-	-	DNA	-	-	DNA	-
Gaines	3	4	5	-	-	-	-	-	-	-	-	-
Holley (Village)	DNA	DNA	DNA	DNA	DNA	DNA	DNA	DNA	DNA	DNA	DNA	DNA
Kendall	DNA	3	4	DNA	-	-	DNA	1	-	DNA	-	-
Lyndonville (Village)	1	-	-	-	-	-	-	-	-	-	-	-
Medina (Village)	DNA	5	27	DNA	-	-	DNA	1	-	DNA	-	1
Murray	DNA	DNA	DNA	DNA	DNA	DNA	DNA	DNA	DNA	DNA	DNA	DNA
Ridgeway	8	4	2	-	-	-	1	-	-	-	-	-
Shelby	5	4	4	-	-	-	1	-	1	-	-	-
Yates	8	6		-	-		1	-		-	-	
County Totals	58	44	63	1	0	0	5	2	1	0	1	1

DNA = Data not available.

Source: Municipal representatives, 2005 - 2007

Number of Permits Issued for New Residential Units and Industrial, Commercial and Community Service Buildings (2005 - 2007)

Seneca County

Municipality	Residential Units			Industrial Units			Commercial Units			Community Service Units		
	2005	2006	2007	2005	2006	2007	2005	2006	2007	2005	2006	2007
Covert	7	12	16	-	-	-	1	-	-	1	-	-
Fayette	19	19	17	-	-	-	3	1	1	1	-	-
Interlaken (Village)	DNA	DNA	DNA	DNA	DNA	DNA	DNA	DNA	DNA	DNA	DNA	DNA
Junius	8	4	8	-	-	-	1	2	-	1	-	-
Lodi	13	14	8	-	-	-	1	1	4	-	-	1
Lodi (Village)	DNA	DNA	DNA	DNA	DNA	DNA	DNA	DNA	DNA	DNA	DNA	DNA
Ovid	13	5	8	-	-	-	-	2	1	-	-	-
Ovid (Village)	DNA	DNA	DNA	DNA	DNA	DNA	DNA	DNA	DNA	DNA	DNA	DNA
Romulus	8	11	19	-	-	-	1	2	-	-	-	-
Seneca Falls	4	10	6	1	-	-	2	2	-	-	-	1
Seneca Falls (Village)	6	8	1	-	-	-	-	-	-	-	-	-
Tyre	4	2	3	-	-	-	-	1	-	-	-	-
Varick	6	10	8	-	-	-	1	-	-	-	-	-
Waterloo	15	18	21	-	-	-	2	2	-	1	-	-
Waterloo (Village)	1	42	2	-	-	-	-	-	-	-	-	-
County Totals	104	155	117	1	0	0	12	13	6	4	0	2

DNA = Data not available.

Source: Seneca County Department of Economic Development & Planning, 2005 - 2007

Number of Permits Issued for New Residential Units and Industrial, Commercial and Community Service Buildings (2005 - 2007)

Wayne County

Municipality	Residential Units			Industrial Units			Commercial Units			Community Service Units		
	2005	2006	2007	2005	2006	2007	2005	2006	2007	2005	2006	2007
Arcadia	3	12	DNA	-	-	DNA	-	-	DNA	-	-	DNA
Butler	DNA	DNA	3	DNA	DNA	-	DNA	DNA	2	DNA	DNA	-
Clyde (Village)	-	DNA	1	-	DNA	-	-	DNA	-	-	DNA	-
Galen	14	3	7	-	2	1	-	-	-	-	-	1
Huron	12	12	9	-	-	-	-	-	-	-	-	-
Lyons	8	DNA	3	-	DNA	-	-	DNA	-	1	DNA	-
Lyons (Village)	DNA	DNA	1	DNA	DNA	-	DNA	DNA	1	DNA	DNA	-
Macedon	37	18	31	1	-	1	-	1	2	-	-	-
Macedon (Village)	2	-	2	-	-	-	-	-	-	-	-	-
Marion	DNA	DNA	DNA	DNA	DNA	DNA	DNA	DNA	DNA	DNA	DNA	DNA
Newark (Village)	2	3	2	1	-	1	3	3	-	-	-	-
Ontario	52	42	51	-	2	-	2	4	1	-	-	-
Palmyra	56	14	4	-	1	1	-	-	-	-	-	1
Palmyra (Village)	1	-	-	-	-	-	-	-	-	-	-	-
Red Creek (Village)	-	-	2	-	-	-	-	-	-	-	-	-
Rose	9	6	3	-	-	-	-	-	-	-	-	-
Savannah	4	1	3	-	-	-	-	-	-	-	-	1
Sodus	20	12	8	-	-	-	5	-	1	-	-	-
Sodus (Village)	1	-	1	-	-	-	-	-	-	-	-	-
Sodus Point (Village)	4	1	1	-	-	-	1	-	-	-	-	-
Walworth	35	DNA	DNA	-	DNA	-	1	DNA	-	-	DNA	-
Williamson	24	DNA	9	2	DNA	2	-	DNA	-	-	DNA	-
Wolcott	2	DNA	16	-	DNA	-	1	DNA	-	-	DNA	-
Wolcott (Village)	5	7	3	-	-	1	-	-	-	-	-	-
County Totals	291	131	160	4	5	7	13	8	7	1	0	3

DNA = Data not available.

Source: Municipal representatives, 2005 - 2007

Number of Permits Issued for New Residential Units and Industrial, Commercial and Community Service Buildings (2005 - 2007)

Wyoming County

Municipality	Residential Units			Industrial Units			Commercial Units			Community Service Units		
	2005	2006	2007	2005	2006	2007	2005	2006	2007	2005	2006	2007
Arcade	12	10	13	DNA	DNA	DNA	1	4	1	DNA	DNA	DNA
Arcade (Village)	2	2	1	DNA	DNA	DNA	7	3	9	DNA	DNA	DNA
Attica	4	1	-	DNA	DNA	DNA	-	-	1	DNA	DNA	DNA
Attica (Village)	3	0	1	DNA	DNA	DNA	2	3	-	DNA	DNA	DNA
Bennington	12	13	10	DNA	DNA	DNA	-	2	3	DNA	DNA	DNA
Castile	5	6	3	DNA	DNA	DNA	2	2	1	DNA	DNA	DNA
Castile (Village)	2	1	-	DNA	DNA	DNA	-	1	-	DNA	DNA	DNA
Covington	5	-	5	DNA	DNA	DNA	4	-	1	DNA	DNA	DNA
Eagle	5	9	1	DNA	DNA	DNA	2	8	5	DNA	DNA	DNA
Gainesville	5	3	9	DNA	DNA	DNA	3	-	-	DNA	DNA	DNA
Gainesville (Village)	-	-	-	DNA	DNA	DNA	-	-	1	DNA	DNA	DNA
Genesee Falls	1	-	-	DNA	DNA	DNA	-	-	-	DNA	DNA	DNA
Java	7	7	6	DNA	DNA	DNA	2	5	2	DNA	DNA	DNA
Middlebury	4	3	1	DNA	DNA	DNA	1	1	1	DNA	DNA	DNA
Orangeville	7	2	4	DNA	DNA	DNA	-	-	1	DNA	DNA	DNA
Perry	8	3	4	DNA	DNA	DNA	-	2	7	DNA	DNA	DNA
Perry (Village)	-	1	1	DNA	DNA	DNA	9	-	3	DNA	DNA	DNA
Pike	-	2	2	DNA	DNA	DNA	2	1	6	DNA	DNA	DNA
Pike (Village)	-	1	-	DNA	DNA	DNA	-	-	1	DNA	DNA	DNA
Sheldon	10	2	5	DNA	DNA	DNA	6	1	7	DNA	DNA	DNA
Silver Springs (Village)	1	-	-	DNA	DNA	DNA	3	3	2	DNA	DNA	DNA
Warsaw	10	6	3	DNA	DNA	DNA	3	2	4	DNA	DNA	DNA
Warsaw (Village)	-	-	-	-	DNA	DNA	-	-	3	-	DNA	DNA
Wethersfield	2	-	5	DNA	DNA	DNA	5	-	3	DNA	DNA	DNA
Wyoming (Village)	-	-	-	DNA	DNA	DNA	2	2	-	DNA	DNA	DNA
County Totals	105	72	74	DNA	DNA	DNA	54	40	62	DNA	DNA	DNA

*Wyoming County did not specify between Commercial and Industrial permits.

DNA = Data not available.

Source: Wyoming County Building Department, 2005 - 2007

Number of Permits Issued for New Residential Units and Industrial, Commercial and Community Service Buildings (2005 - 2007)

Yates County

Municipality	Residential Units			Industrial Units			Commercial Units			Community Service Units		
	2005	2006	2007	2005	2006	2007	2005	2006	2007	2005	2006	2007
Barrington	16	22	28	-	-	-	-	-	1	-	-	-
Benton	DNA	DNA	DNA	DNA	DNA	DNA	DNA	DNA	DNA	DNA	DNA	DNA
Dresden (Village)	1	-	-	-	-	-	-	-	-	-	-	-
Dundee (Village)	DNA	-	2	DNA	-	-	DNA	1	-	DNA	1	-
Italy	6	7	5	-	-	-	-	-	-	-	-	-
Jerusalem	DNA	DNA	DNA	DNA	DNA	DNA	DNA	DNA	DNA	DNA	DNA	DNA
Middlesex	4	DNA	DNA	-	DNA	DNA	-	DNA	DNA	-	DNA	DNA
Milo	16	12	22	-	-	-	-	-	-	-	-	-
Penn Yan (Village)	DNA	8	1	DNA	1	-	DNA	2	2	DNA	-	-
Potter	DNA	3	4	DNA	-	-	DNA	-	-	DNA	-	-
Starkey	3	DNA	8	-	DNA	-	-	DNA	2	-	DNA	-
Torrey	7	5	6	2	1	-	-	-	-	-	-	-
County Totals	53	57	76	2	2	0	0	3	5	0	1	0

DNA = Data not available.

Source: Municipal representatives, 2005 - 2007

Appendix H

Transportation Management Area Time Series Analysis Data

Total Number of New Residential Units Permitted in TMA, 1994-2007

Monroe County	1994	1995	1996	1997	1998	1999	2000	2001	2002	2003	2004	2005	2006	2007	Total (1994-2007)
Brighton	11	121	25	399	110	12	55	16	19	13	206	206	95	11	1,299
Brockport (Village)	13	9	0	29	1	2	1	1	0	0	39	4	6	10	115
Chili	386	78	236	113	105	115	125	142	150	237	127	102	108	80	2,104
Churchville (Village)	1	3	18	13	17	15	8	7	6	6	7	5	38	7	151
Clarkson	52	31	63	54	48	75	32	43	42	60	19	18	18	16	571
East Rochester (T/V)	1	1	0	1	0	0	DNA	2	1	1	0	2	9	DNA	18
Fairport (Village)	0	0	0	2	2	5	5	3	29	4	1	1	0	1	53
Gates	108	198	48	163	43	59	37	0	0	24	16	23	19	8	746
Greece	265	253	430	222	245	293	226	323	415	288	198	220	184	126	3,688
Hamlin	33	22	17	17	10	10	DNA	29	8	10	18	9	15	28	226
Henrietta	85	45	69	67	110	388	303	147	167	317	205	206	176	263	2,548
Hilton (Village)	25	50	16	8	5	10	31	47	32	18	15	13	86	16	372
Honeoye Falls (Village)	4	4	8	10	8	15	10	12	3	3	1	10	10	15	113
Irondequoit	85	DNA	140	DNA	DNA	43	53	25	40	28	33	16	9	10	482
Mendon	38	36	34	34	48	59	45	52	50	33	33	25	22	16	525
Ogden	84	78	95	52	65	81	106	71	85	132	65	62	60	38	1,074
Parma	34	27	45	40	28	39	57	60	68	74	61	62	44	32	671
Penfield	123	119	145	164	188	196	169	152	140	131	108	140	110	128	2,013
Perinton	190	185	154	158	178	476	191	146	146	122	78	64	52	49	2,189
Pittsford (Town & Village)	90	153	86	89	81	93	72	228	102	142	119	95	57	49	1,456
Riga	17	17	23	12	8	12	12	6	19	10	8	13	7	5	169
Rochester (City)	61	65	98	54	20	35	75	54	60	186	97	93	77	84	1,059
Rush	19	6	11	15	14	16	12	19	16	11	8	11	6	3	167
Scottsville (Village)	1	2	9	4	33	0	0	0	3	5	5	3	2	2	69
Spencerport (Village)	3	9	5	0	5	7	12	0	0	8	3	1	1	5	59
Sweden	36	13	16	26	18	18	18	22	21	24	4	7	7	5	235
Webster	257	206	270	204	488	308	342	227	314	447	272	233	187	141	3,896
Webster (Village)	2	1	0	1	0	0	0	11	26	11	0	-	20	9	81
Wheatland	5	5	4	7	3	3	7	1	DNA	3	7	12	4	3	64
Monroe County Total	2,029	1,737	2,065	1,958	1,881	2,385	2,004	1,846	1,962	2,348	1,753	1,656	1,429	1,160	26,213

DNA = Data not available

Source: Municipal Representatives, 1995-2008 & Rochester Home Builders' Association, 1995-2000

Total Number of New Residential Units Permitted in TMA, 1994-2007 (continued)

Livingston County	1994	1995	1996	1997	1998	1999	2000	2001	2002	2003	2004	2005	2006	2007	Total (1994-2007)
Avon	19	28	14	16	11	14	20	20	22	37	25	22	28	2	278
Avon (Village)	DNA	DNA	7	39	41	8	10	37	9	DNA	DNA	12	9	6	178
Caledonia	17	9	9	6	4	9	11	7	9	11	4	5	4	5	110
Caledonia (Village)	DNA	DNA	DNA	DNA	0	1	DNA	0	0	0	1	0	0	0	2
Lima	60	48	8	14	12	14	7	4	8	4	4	9	9	5	206
Lima (Village)	DNA	DNA	27	10	11	12	8	6	8	3	0	1	2	3	91
Livingston County Total	96	85	65	85	79	58	56	74	56	55	34	49	52	21	865

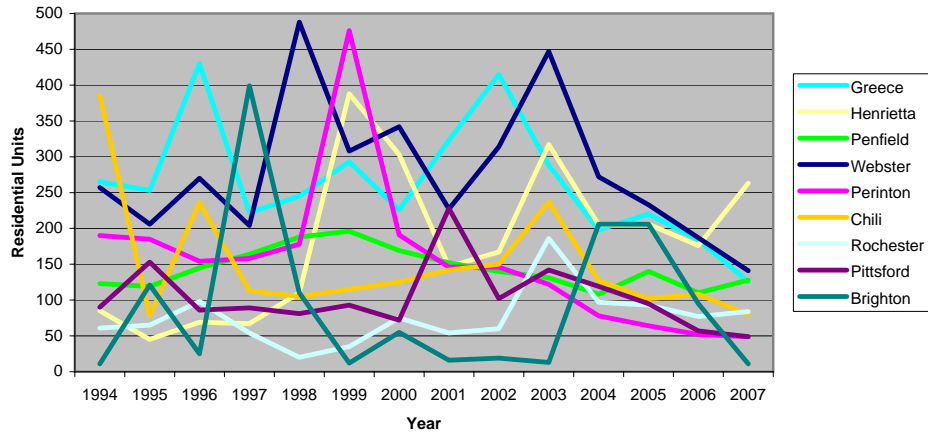
Ontario County	1994	1995	1996	1997	1998	1999	2000	2001	2002	2003	2004	2005	2006	2007	Total (1994-2007)
Bloomfield (Village)	DNA	DNA	DNA	DNA	DNA	26	1	3	3	18	DNA	1	0	0	52
Canandaigua (City)	18	8	49	15	20	27	32	39	29	19	33	33	7	18	347
Canandaigua	39	19	58	124	63	79	62	49	54	98	78	96	170	109	1,098
East Bloomfield	18	7	10	9	12	20	14	18	22	12	11	14	10	7	184
Farmington	45	28	30	15	66	62	33	44	160	44	51	43	113	67	801
Victor	56	62	102	82	128	210	162	192	187	288	248	118	78	293	2,206
Victor (Village)	DNA	DNA	15	8	14	35	7	18	23	0	DNA	9	8	3	140
West Bloomfield	6	3	8	7	DNA	10	9	20	18	21	14	16	3	10	145
Ontario County Total	182	127	272	260	303	469	320	383	496	500	435	330	389	507	4,973

Wayne County	1994	1995	1996	1997	1998	1999	2000	2001	2002	2003	2004	2005	2006	2007	Total (1994-2007)
Macedon	25	26	40	29	34	36	60	43	36	30	24	37	18	31	469
Macedon (Village)	DNA	DNA	DNA	4	2	0	9	10	4	4	1	2	0	2	38
Ontario	173	170	49	60	69	69	71	54	65	54	72	52	42	51	1,051
Walworth	102	107	98	83	71	84	40	49	49	38	43	35	DNA	DNA	799
Wayne County Total	300	303	187	176	176	189	180	156	154	126	140	126	60	84	2,357
TMA Totals	2,607	2,252	2,589	2,479	2,439	3,101	2,560	2,459	2,668	3,029	2,362	2,161	1,930	1,772	34,408

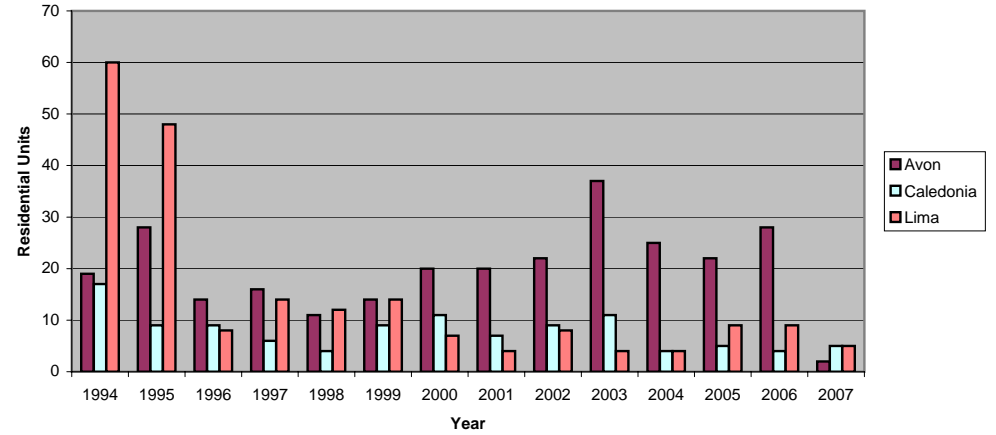
DNA = Data not available

Source: Municipal Representatives, 1995-2008

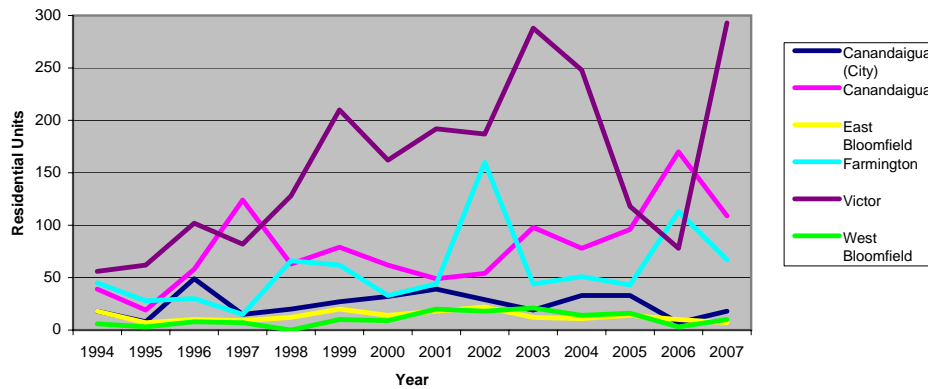
Towns with the Largest Numbers of Permitted Residential Units in Monroe County (1994 - 2007)



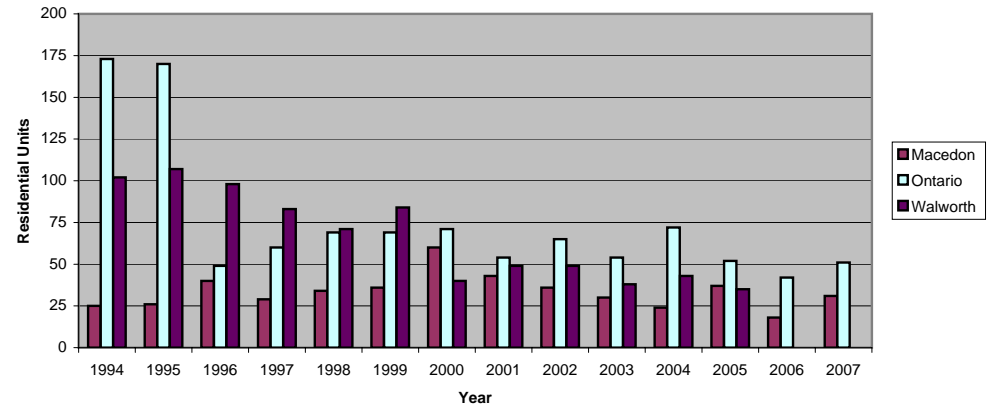
Number of Permitted Residential Units in Livingston County TMA Towns (1994 - 2007)



Number of Permitted Residential Units in Ontario County TMA Towns & City of Canandaigua (1994 - 2007)



Number of Permitted Residential Units in Wayne County TMA Towns (1994 - 2007)



Total Number of New Industrial Buildings Permitted in TMA (outside Monroe County), 1994-2007

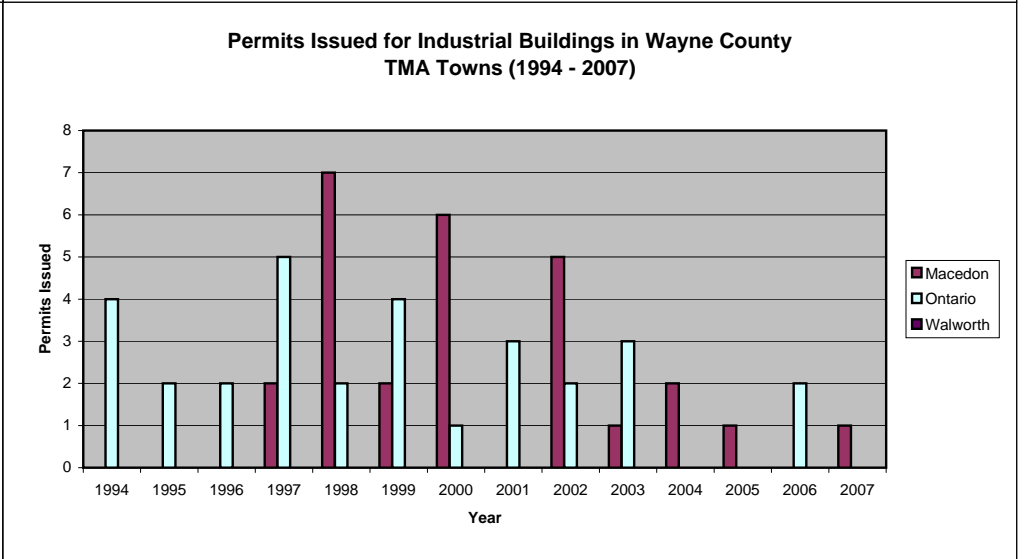
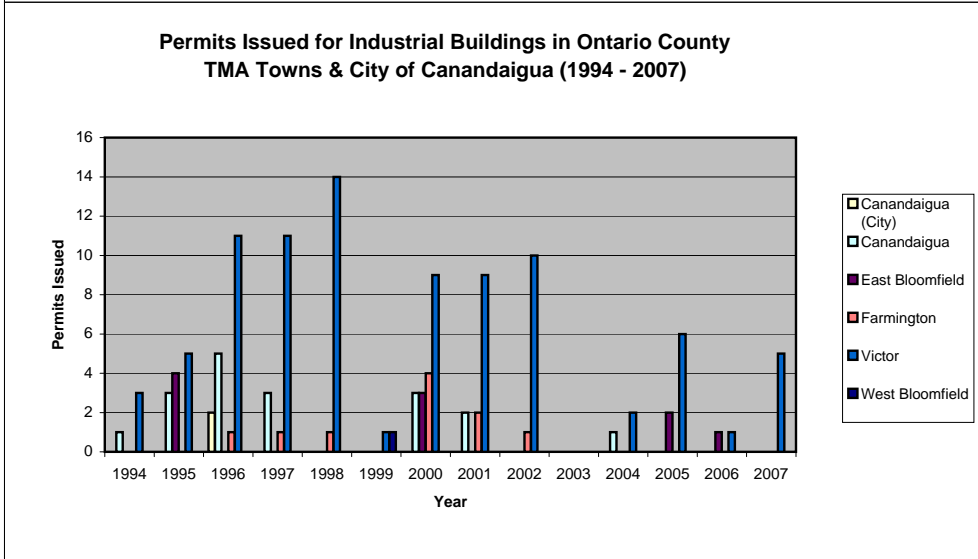
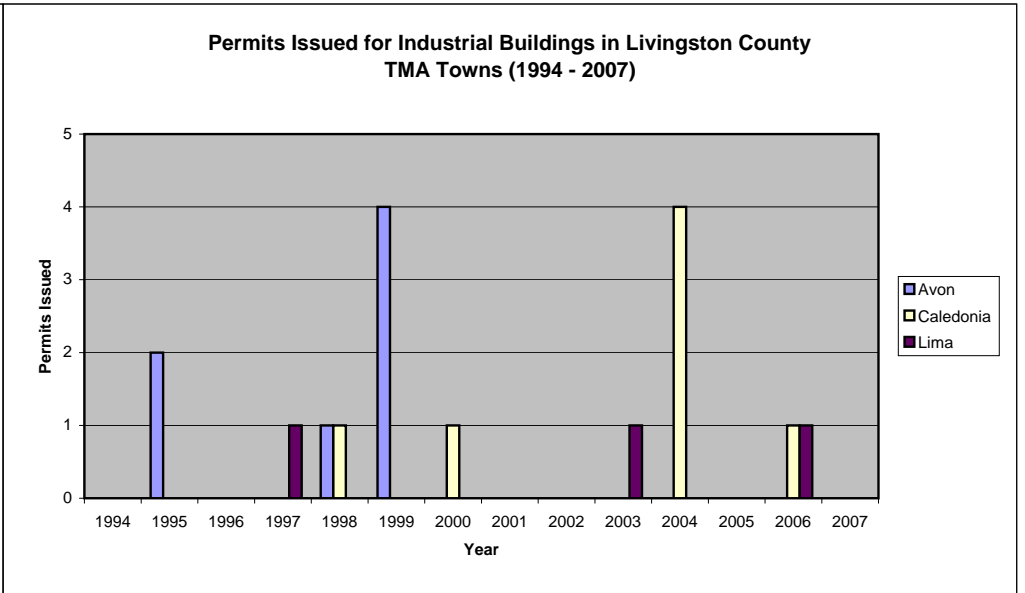
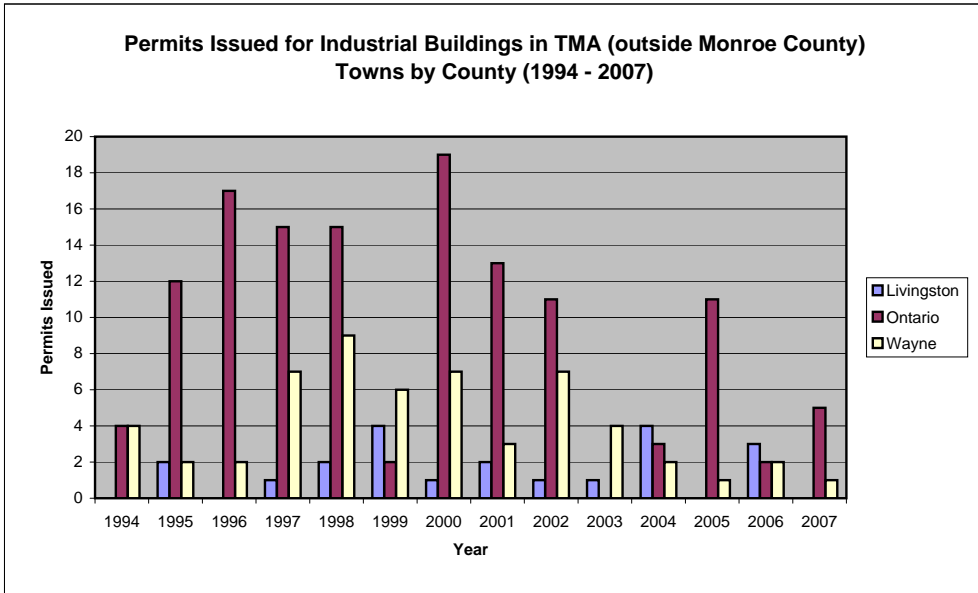
Livingston County	1994	1995	1996	1997	1998	1999	2000	2001	2002	2003	2004	2005	2006	2007	Total (1994-2007)
Avon	0	2	0	0	1	4	0	0	0	0	0	0	0	0	7
Avon (Village)	DNA	DNA	0	0	1	2	0	1	0	0	DNA	0	1	0	5
Caledonia	0	0	0	0	1	0	1	0	0	0	4	0	1	0	7
Caledonia (Village)	DNA	DNA	DNA	DNA	1	0	0	1	0	0	0	0	0	0	2
Lima	0	0	0	1	0	0	0	0	0	1	0	0	1	0	3
Lima (Village)	DNA	DNA	0	0	0	1	0	0	1	0	0	0	0	0	2
Livingston County Total	0	2	0	1	4	7	1	2	1	1	4	0	3	0	26

Ontario County	1994	1995	1996	1997	1998	1999	2000	2001	2002	2003	2004	2005	2006	2007	Total (1994-2007)
Bloomfield (Village)	DNA	DNA	DNA	DNA	0	1	0	1	0	DNA	DNA	0	0	0	2
Canandaigua (City)	0	0	2	0	0	0	0	0	0	0	0	0	0	0	2
Canandaigua	1	3	5	3	0	0	3	2	0	0	1	0	0	0	18
East Bloomfield	0	4	0	0	0	0	3	0	0	0	0	2	1	0	10
Farmington	0	0	1	1	1	0	4	2	1	0	0	0	0	0	10
Victor	3	5	11	11	14	1	9	9	10	0	2	6	1	5	87
Victor (Village)	DNA	DNA	0	2	0	0	0	0	0	0	DNA	3	0	0	5
West Bloomfield	0	0	0	0	DNA	1	0	0	0	0	0	0	0	0	1
Ontario County Total	4	12	19	17	15	3	19	14	11	0	3	11	2	5	135

Wayne County	1994	1995	1996	1997	1998	1999	2000	2001	2002	2003	2004	2005	2006	2007	Total (1994-2007)
Macedon	0	0	0	2	7	2	6	0	5	1	2	1	0	1	27
Macedon (Village)	DNA	DNA	DNA	0	0	0	0	0	0	0	0	0	0	0	0
Ontario	4	2	2	5	2	4	1	3	2	3	0	0	2	0	30
Walworth	0	0	0	0	0	0	0	0	0	0	0	0	DNA	DNA	0
Wayne County Total	4	2	2	7	9	6	7	3	7	4	2	1	2	1	57
TMA (outside Monroe) Totals	8	16	21	25	28	16	27	19	19	5	9	12	7	6	218

DNA = Data not available

Source: Municipal Representatives, 1995-2008



Total Number of New Commercial Buildings Permitted in TMA (outside Monroe County), 1994-2007

Livingston County	1994	1995	1996	1997	1998	1999	2000	2001	2002	2003	2004	2005	2006	2007	Total (1994-2007)
Avon	7	5	3	1	3	1	1	1	0	1	3	3	0	0	29
Avon (Village)	DNA	DNA	0	1	1	0	0	0	1	DNA	DNA	0	0	1	4
Caledonia	1	1	0	0	0	0	0	0	0	0	0	1	0	1	4
Caledonia (Village)	DNA	DNA	DNA	DNA	0	0	0	0	0	0	1	0	0	0	1
Lima	2	1	1	0	0	0	1	0	0	0	0	2	0	1	8
Lima (Village)	DNA	DNA	0	0	1	0	0	0	0	0	0	0	0	0	1
Livingston County Total	10	7	4	2	5	1	2	1	1	1	4	6	0	3	47

Ontario County	1994	1995	1996	1997	1998	1999	2000	2001	2002	2003	2004	2005	2006	2007	Total (1994-2007)
Bloomfield (Village)	DNA	DNA	DNA	DNA	0	1	0	0	0	0	DNA	0	0	0	1
Canandaigua (City)	0	0	0	2	5	1	17	0	2	1	3	0	1	0	32
Canandaigua	2	5	1	2	1	0	1	0	2	0	3	3	0	1	21
East Bloomfield	1	5	0	2	1	0	1	3	0	2	0	0	0	0	15
Farmington	24	8	0	0	0	0	2	0	0	0	1	0	0	13	48
Victor	47	13	68	29	29	14	12	4	36	0	3	4	4	3	266
Victor (Village)	DNA	DNA	0	1	0	0	0	1	0	0	DNA	0	0	1	3
West Bloomfield	2	0	0	0	DNA	0	0	0	0	0	0	0	0	0	2
Ontario County Total	76	31	69	36	36	16	33	8	40	3	10	7	5	18	388

Wayne County	1994	1995	1996	1997	1998	1999	2000	2001	2002	2003	2004	2005	2006	2007	Total (1994-2007)
Macedon	0	0	0	0	1	2	1	0	0	3	3	0	3	2	15
Macedon (Village)	DNA	DNA	DNA	0	0	0	0	0	0	0	0	0	0	0	0
Ontario	2	3	6	4	7	4	2	4	3	0	2	2	4	1	44
Walworth	2	4	1	1	3	1	2	0	0	0	1	1	DNA	DNA	16
Wayne County Total	4	7	7	5	11	7	5	4	3	3	6	3	7	3	75
TMA (outside Monroe) Totals	90	45	80	43	52	24	40	13	47	7	20	16	12	24	510

DNA = Data not available

Source: Municipal Representatives, 1995-2008

